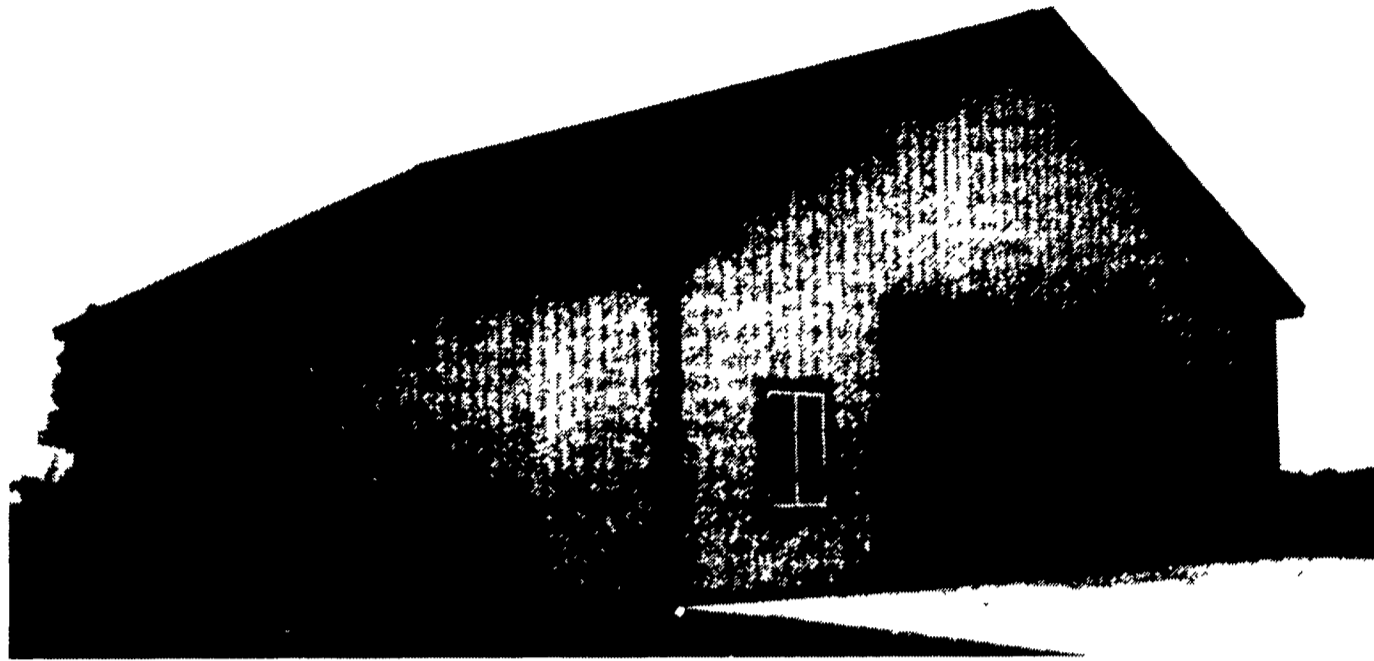


# CARTER

**THE PROFESSIONAL LUMBERYARD** *Lumber*

WE DELIVER ON TIME ANYWHERE IN PA, MD, DE, NJ, NY, CT, VA, WVA

EVERYTHING YOU NEED TO GET THE JOB DONE!



**FREE!**  
**STANLEY BOSTITCH**  
**STICK NAILER**  
 with pole barn purchase  
 24' x 24' or larger

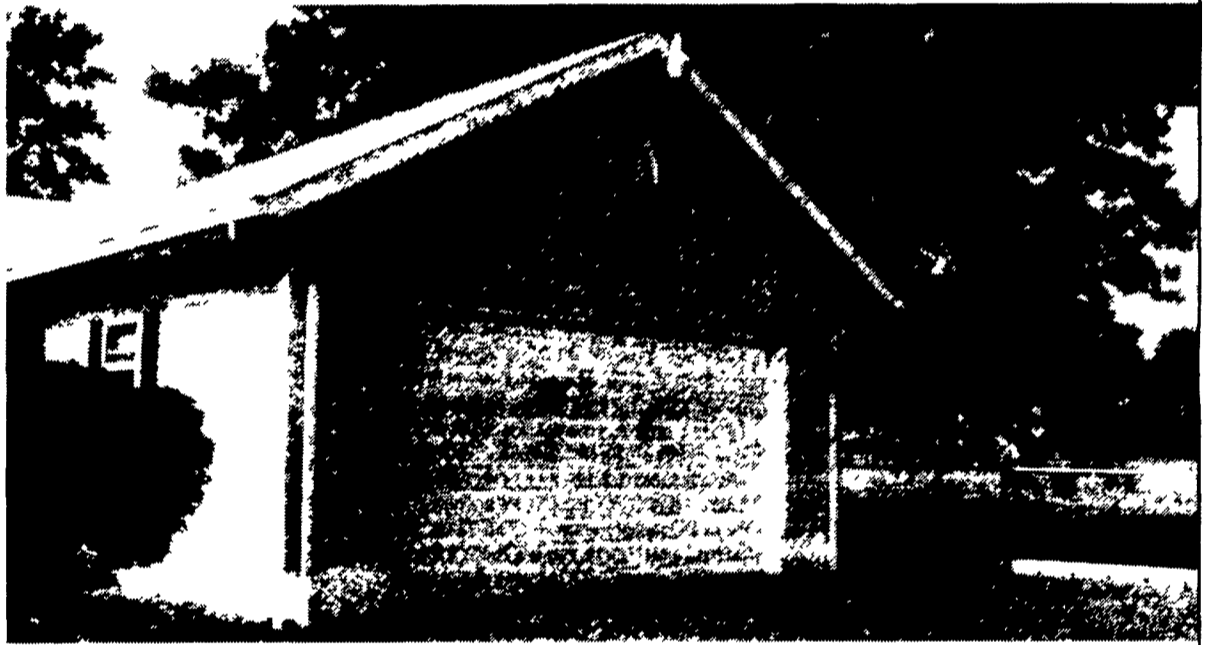


retail value \$259<sup>00</sup>  
 #N80SB

**FREE!**  
**GENIE**  
**GARAGE DOOR OPENER**  
 with any garage purchase 22' or larger



retail value \$149<sup>00</sup>  
 #GCG350-1



**STEEL ENTRY DOOR SYSTEMS**  
 PRIMED AND READY TO PAINT  
 ♦2 year system warranty  
 ♦Prehung/weathertight ♦Includes brickmould & sill ♦32" or 36"  
**CONSTRUCTION SERIES**

**THERMA TRU**  
 THE DOOR SYSTEM YOU CAN BELIEVE IN

**\$10<sup>00</sup> OFF**  
 per door  
 price includes discount

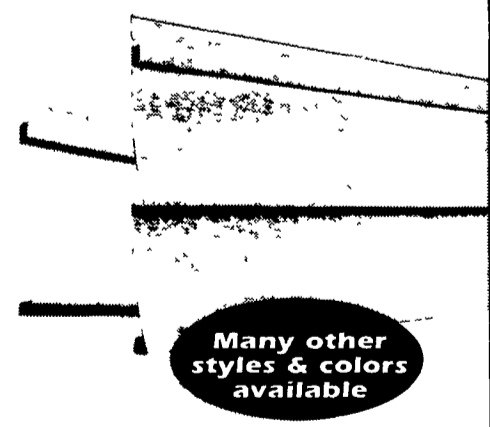
- |                                 |                          |                                     |                           |
|---------------------------------|--------------------------|-------------------------------------|---------------------------|
| #CSE-100 solid single lock bore | <b>\$89<sup>00</sup></b> | #CSE-223 crossbuck double lock bore | <b>\$129<sup>00</sup></b> |
| #CSE-210 panel single lock bore | <b>\$94<sup>00</sup></b> | #CSE-255 w/lite double lock bore    | <b>\$144<sup>00</sup></b> |

**VINYL SIDING CLASSIC DOUBLE 4"**  
 ♦.040" nominal thickness ♦10 attractive colors ♦.072" nailing hem reinforcement bead provides **125** mph windload performance  
 White 100 sq. ft. **\$35<sup>99</sup>** Color 100 sq. ft. **\$37<sup>99</sup>**  
 (Greystone color extra)

**SELECT DOUBLE 4"**  
 ♦.042" nominal thickness ♦12 attractive colors ♦.084" nailing hem reinforcement bead provides **150** mph windload performance  
 White 100 sq. ft. **\$44<sup>99</sup>** Color 100 sq. ft. **\$45<sup>99</sup>**  
 (Greystone color extra)

  
**Villager**  
 VINYL SIDING

Select Siding Now Available



**HOURS: Mon. thru Fri. 7:30-6:00 • Sat. 7:30-4:00 • Sun. Hours vary**

GOOD THRU 4/13/02



**LANCASTER**  
 LBR. 717-397-4829 / FAX 397-4865  
 (Closed Sunday)

**ELIZABETHTOWN**  
 LBR. 717-367-1886 FAX 367-3858  
 PEH. 367-7707  
 (Closed Sunday)

**CARLISLE**  
 LBR. 717-245-0404 / FAX 245-9361  
 PEH. 717-245-2486 / FAX 245-0295

**CHAMBERSBURG**  
 LBR. 717-263-0822  
 FAX 263-7077

**NORTHUMBERLAND**  
 PH. 570-473-8311  
 FAX 473-7149

# CARTER

*Lumber*

WE DELIVER ON TIME  
 VISIT OUR NEWEST YARD @ www.carterlumber.com