


THE ANTIQUE  
DETECTIVE

Anne Gilbert



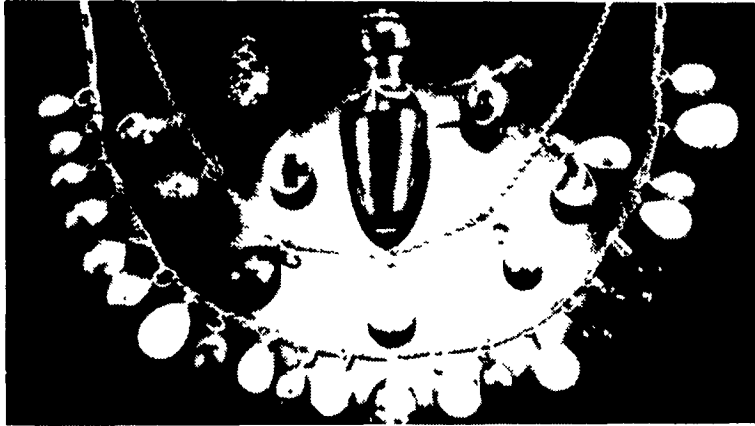
Americans were introduced to the wonders of Fabergé eggs in 1985, when the first one, the Cuckoo egg, circa 1900, was auctioned at Sotheby's. It sold for more than \$1 million.

Jeweler to the czars, Carl Fabergé designed hundreds of objects. But, he's best known for his elaborate Easter eggs.

Their mystique has grown in

an ongoing Easter egg hunt. Of some 56 eggs Fabergé designed for the Russian royal family, some are still not accounted for. Also missing are many of the presentation eggs he made for a limited number of his wealthiest patrons. When they reappear at auction, they sometimes sell in the millions of dollars.

Largest prices in recent years



Twenty-two miniature Easter egg pendants, c.1900, including Faberge miniature eggs. Sold in London for more than \$20,000. Photo by Sotheby's, London.

# The Ultimate Easter Egg

were at a 1997 Christie's auction when the "Winter Egg" of rock crystal, commissioned by the nephew of Alfred Nobel, fetched \$5.6 million. The same year, Sotheby's sold an imperial gift, the "Love Trophy" egg for nearly \$3.2 million.

What makes the eggs so special? The mystique of the Russian connection, and the use of precious gems and metals, are not the only reasons for such astronomical prices. The workmanship alone warrants them. Add the mechanical skill of the interior "surprises" that Fabergé invented for most of his eggs and it's easy to understand.

Consider the "Orange Tree" egg. When one of the jeweled oranges is pressed, a tiny, feathered-gold nightingale appears from the top of the tree to sing

and flap its wings.

One of the best-known Fabergé collectors was the late publisher Malcolm Forbes. He kept his paper clips in a Fabergé dish on his desk.

The Fabergé eggs originated as decorative Easter gifts — pendants and various objects d'art in the form of tiny eggs, popular in the 1880s. In 1884, Czar Alexander III asked Fabergé to create an unusual Easter gift for his wife, the Empress Maria Feodorovna.

The first of the imperial eggs was relatively simple. It contained a golden yoke, which in turn held a tiny gold hen figurine. The czarina was so pleased that the commissions came annually, with each egg containing a hidden surprise.

In 1896, when Nicholas II

came to the throne, he continued the tradition, adding one for his mother, the Dowager Empress.

Though Carl Fabergé was born in Russia, his heritage and decorative influences are French. His grandfather fled Huguenot persecution and became a Russian subject. His father, Gustav Fabergé, began training in his father's workshop and was apprenticed to a German goldsmith in Frankfurt am Main. However, a subsequent tour of Italy and France and the techniques of enamellers and goldsmiths were his greatest influence.

At the age of 24 he took over his father's firm, in 1870. By 1882 his unique style of jewelry won him the gold medal at Moscow's Pan-Russian Exhibition, and the

(Turn to Page B29)

## JUNIATA COUNTY PUBLIC AUCTION SATURDAY, APRIL 6, 2002 - 9:00 A.M.

Located in Juniata County along Barton Hill Road, 9 miles south of Port Royal, just off Route 75 at the village of Pleasant View, signs auction day.

### VEHICLES & FARM EQUIPMENT: 1975

Ford F250 4wd custom pickup, 360 eng, auto, w/air, 63,000 miles, 1952 Plymouth Cambridge 4 dr sedan, 51,000 miles, nice restorable car; Ford Ferguson tractor, one owner, New Idea #30A pt pull-type drawbar wheel mower; IH 6' 3 pt mower; JD 3X14 3-pt plow; Cosmo 3 pt pt fertilizer spreader; JD 10' transport disc; JD 25 pull-type combine; Ferguson 3 pt cultivator; Dearborn Wood Bros snapper picker; Oliver walking plow; AC 3 pt 2-row corn planter; JD 2-row corn planter; 3 pt hitch shovel plow; hay fork w/pulley; wagon jack; Husqvarna 240 chain saw; 6/12 battery charger, bottle jack; two-man saws; old wooden tool chest; rope block and tackle; hand and electrical tools; pony saddle & bridle.

### ANTIQUES & COLLECTIBLES: Early 6'6"

painted-over corner cupboard w/double paneled doors above and single paneled door below, needs restoration; round oak 42" claw-foot pedestal table w/boards; six oak solid seat matching kitchen chairs; press-back oak rocker w/matching side chair; oak roll-top bed; oak washstand; empire chest of drawers; Wilson cupboard top; Domestic treadle type sewing machine; ladder-back child's rocker; early decorated single bed, mortise bench; pine flour chest; old 64" decorated fireplace mantles; mahogany bed; oak dresser w/beveled mirror; oak high chest w/beveled mirror; oak mission-style library table; depression era oak extension table; Perfection 3-burner oil stove; 2 oak flat-arm living room rockers; early red 4' dovetailed blanket chest w/fancy hand-forged lid hinges, large key & handles; mahogany wardrobe; rope bed, lift-top school desk; oak beveled mirror; early spinning wheel yarn winder; old quilting frame; bentwood chair; 3-footed piano stool, organ stool, oak oval sculptured picture frame, small Gone-with-the-Wind lamp, railroad lamp; Aladdin Model 12 lamp; Aladdin milk glass lamp; wire egg basket; Premier & Acme egg scales; ornate picture frames & mirror; iron beds; Enterprise #12 grinder; Enterprise 1 gal stuffer; old galvanized wash boiler, cream separator & milk cans; cast iron mush pot; 2 cast iron lamp brackets, cast iron square skillet; oval griddle; cast iron sailor coin bank, cast iron horse toy; old kettle fork & spoon, shoe last; Sterling #1 food chopper; Universal #72 food chopper; butter bowl & paddle; Enterprise cherry stoner; apple peeler; cistern pump; round white porcelain wash tubs; tin 12-stick candle mold, Keen Kutter food processor, old school slate, wooden pipe bowl, early wool separator, several sadirons, early powder horn, small coffee mill, early dove-tailed cheese box; bracket lamp, wooden butter churn bucket w/lid, 3 footed wooden milk stool; handled market basket, early tin-type picture, wooden egg crate, Naptha soap box, shaving mirror w/bracket for cup; apple butter crocks; York keystone 5 gal crock, Dipple 1-1/2 gal crock; 2 gal blue decorated crock, 2 qt handled jug, other crocks; 1872 glass jar lids, old green banner jars & dated jars, Horlick's malted milk bottles, 1 w/original lid, syrup jars, many pharmacist jars, Cohansey green jar, early lunch tins, Calumet baking powder tin, Cheese-zee box, early laced shoes & ice skates, Kauffman's Dairy pint & quart bottle, Mifflin Creamery, Port Royal Dairy, Sanitary Milk Company, Reedsville milk bottles, Mifflin Creamery 1 qt 'eat Juniata ice cream' bottle, porcelain drip coffee maker, ironstone teapot, chamber & platters, Halls mixing bowl, green Fireking, partial set of gold-trimmed Homer Laughlin china, amber depression

including juicer, mixing bowl, refrigerator dish; pink depression double handled sugar bowl; green depression double handled sugar bowl, creamer, divided relish dish, six desserts; vinegar cruets w/matching decanter; 1 fluted handled nut dish, 2 fluted dishes; pressed and patterned glassware, spooners & butter dish, early chicken wire pattern water pitcher, milk glass pieces; Hershey Creamery tin matchbox; celanoid watch case; H.C. Hower Lumber Co fork; Schott's Department Store complimentary plate; Cocomalt tin; 1902 Ford V-8 token; 1935 official inaugural badge, Governor George H Earle; James Bond tin lunch pail; old comforts; old buttons; 2 48-star flags; early paneled cupboard doors; plastic Coca-Cola 8-bottle carrier; carnival stick; razor strap & razors; 9-1/2" & 9" round portrait flue covers. **OLD GUNS & LICENSES:** DR Pa 16 ga bolt-action shotgun; Ross Rifle Company, Canada, 1905 30 cal rifle; 12 gauge single shot; Stevens Model 53B 22 cal rifle; Remington Armory 1917 military rifle; 12 gauge single shot; C.S. Shattuck, Hatfield, Mass 12 gauge double-trigger single shot shotgun; US 38 cal revolver; 32.20 ammo; auto licenses PA 1913, 1936, 1939, 1940; 1950's & 60's Juniata County dog tags; Juniata County 34 1933, 1934, 1935, 1941 tin hunting licenses; 1953 PA cardboard resident hunting license; Shrade hunting knife. **COMICS, BOOKS, LOCAL NEWSPAPERS, ADVERTISEMENTS:** Charleton 12¢ & 15¢ comics, 'The Fighting Army', 'I Love You'; Archie, Marvel, Sgt Fury & D.C. 12¢ comics; 'Skyrider of the Space Waves', 'The Amazing Spiderman', 'Superman', Gold Key comics; many local advertising pieces; WWII ration stamps & books; Hershey's Cocoa poster, rough; Malted Cereals Company poster; 1919 "A Visit to Santa Claus" storybook; 1924 "Bedtime Bible Stories" book; ABC series storybooks; 1886 Bible Stories book; 1873 Atlas of Luzerne County; many old story books including Tom Swift, Kit Carson, Bunny Brown, etc; early school books, many old local newspapers from 1917-74; old local school portraits; 1905 pictures of Harrisburg tram wreck; Hoard's Dairymen complimentary memo books; many old postcard; 1970's Game News; 1960's Pennsylvania Farmer; 1937 Ford reference manual; 1973 Sears catalog; PRR train schedules; early cloth feed & seed bags, Eastern States, McMillan Feed Mills, DeKalb, Rohrer's, early paper sacks; W.E. and R.A. Beers, Academia; many Cream of Wheat bags, Goss Buckwheat bags **MODERN FURNITURE:** Kenmore electric clothes dryer; Wards 23 cu ft chest freezer; Maytag round-tub wringer-washer, modern entertainment center, matching Colonial-style maple lamp stands & coffee table; upholstered sofa & chair, electrified TV lamps, 1-door lamp stand; wooden maple bar stools, small 2-burner wood & coal stove.

**Auctioneer's Note:** Plan to attend this all-day sale of the Jr Barton estate with many things yet to be seen Auction held rain or shine, tent if inclement weather **Terms:** Cash or good PA check.

**Owner:**  
**VESTA BARTON**  
RR1, Port Royal, PA

Lunch stand  
Owner & Auctioneer not responsible  
for accidents

**Bryan D. Imes, Auctioneer**  
RR1 Box 902, Port Royal, PA  
717-527-2449 AU-001656-L

## Public Auction

**THURSDAY  
APRIL 11, 2002  
5:00 P.M.**

### ROBERT "Bob" SHUEY ESTATE MILK BOTTLES DAIRY RELATED ITEMS

LOCATION: Campbelltown Fire Company, Campbelltown, Lebanon County, PA along Route 322 East of Hershey.

#### 319 LOTS OF MILK BOTTLES AND DAIRY RELATED ITEMS

Qt., pt., 1/2 pt - local and regional bottles inc. Hershey, Wengerts, Grimes, Glen Lock, Sanger, Brookfield, Lebanon Valley, Rodichock, Ideal, Hoffman, Breisch, Ferndale, Cleona, Ziegler, Hardick, Honicker, Highland, Locust Grove, Yearick, Edris, Pine Tree, Cloister, Hill Farm, Kromer, Musgrove, etc.; Asst. creamers inc. Freeman, Anthony, Hoffman, Bowman, Wengerts, Lone Oak, Borden, Neidigs, Lambs, Farmland, etc Bottle are square & round, embossed and pyro, etc.

Dairy Related: advertising, Shuey items, carriers, alum. milk pail, strainers, 8 & 10 qt pails, porch boxes, Hershey 85# & 100# drop handle cans, etc.

**TERMS:** Cash or good local check Buyers unknown to auctioneer or out of state buyers must present a current bank letter of credit. **Doors open for inspection at 2:00.** Food by Fire Company Ladies. **Catalogs available at the auction.** Bob loved auctions and bottles. This is auction #4 of this great collection

**HARRY H. BACHMAN**  
AU 0002331 AUCTIONEER  
2051 HORSESHOE PIKE  
ANNVILLE PA 17003 8850  
(717) 867 1809



**Auction by  
JULIA SHUEY**

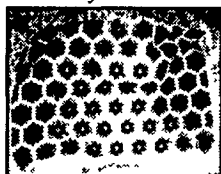
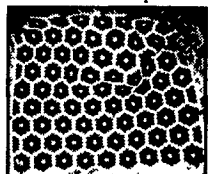
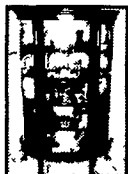
## PUBLIC AUCTION

*Quilts, Furniture and Personal Property*

**FRIDAY, APRIL 5, 2002**

**5:00 P.M.**

Location Goodville Fire Hall, Rt 23 in Goodville  
East Earl Township, Lancaster County



**Quilts** Approximately 10 hand stitched quilts, quilt frames and stands, embroidery work, clothes

**Furniture** Carved oak bow front china cabinet, oak library table, 6 decorated chairs, old oak pedestal table with 3 boards, small drop leaf stand with drawers, dovetailed blanket chest, decorated rocker, sewing cabinet, cedar chest, sofa, clothes tree, iron lamp, bookcase, wringer washer, Hotpoint stove, benches, GE dryer, chest freezer and other items

**Miscellaneous** Depression bowls and juicer, peanut butter glasses, carnival glass, cut glass, ruby glass, agate tub, sprinkler can, pressure cooker, canner, Sunbeam mixer in box, alum stepladder, live trap, pots, pans, kitchen items, some coins, button hook, Ariens roto-tiller, folding chairs, vacuum cleaner, Fisher family book and Petersheim family book, plant stand and other items not mentioned

**Terms:** Cash or PA Check

*Note: Not a large sale but there are some nice pieces.*

*Spend the evening with us. Food provided by Goodville Ladies Auxiliary.*

Tracey L. Jones Auctioneers  
(610) 286-7834 AU-3607-L

Terms by **Elsie and Ada Fisher**  
Reba Yoder, POA