

PUBLIC AUCTION

of 107.6 ACRE FARM

FRIDAY, APRIL 5th at 11 AM

We Are Pleased To Offer At Public Auction

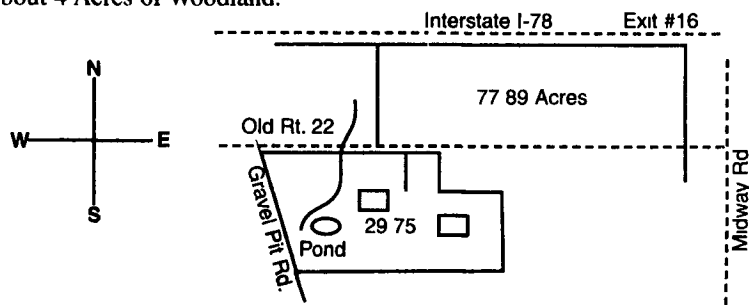


This Fine Berks County Farm.

LOCATION: 9024 Old 22 Bethel, Pa. Berks Co. From The Village of Bethel, Take Old 22 East for 2 Miles to Property. Exit #16 of I-78, Known as Exit #5, Take Midway Rd. South 1/2 Mile To Old 22. Turn Right & Go 1 Mile To Sale. For More Info. Call Auctioneer Dwight Miller (717) 933-5736.

Terms: 10% Down Day Of Sale, Balance Within 60 Days.

Property Lies On Both Sides of Rt. 22. About 78 Acres Is On The North Side of Rt. 22 & I-78 Interstate. About 29 Acres Lies on The South Side Of Rt. 22 Along With A Bank Barn, Lg. 2 1/2 Story Stone Farm House With 12 Large Rooms. Also A Lg. Summer House Turned Into Living Quarters. Property Has a Pond & Creek. Property Has Road Frontage From 3 Different Roads. This Property Has Great Potential As A Farm Or Industrial Commercial Use. Land is Mostly Flat. Property Is Zoned Industrial/Commercial. Property Has About 4 Acres of Woodland.



Auctioneer:
Dwight D. Miller AU002414-L
Bethel, PA 19507
(717) 933-5736

Sale For
MR. J.P. MONK
Atty. Koch & Koch of Reading, PA.

ABSOLUTE AUCTION OF BOWHUNTERS WAREHOUSE

SAT., APRIL 6, 2002 - 9:30 A.M.
SUN., APRIL 7, 2002 - 9:30 A.M.

UNRESERVED AUCTION of the ENTIRE, Computers, Office Equipment, Tools, Industrial Shelving, Entire Warehouse. This is a VERY LARGE AUCTION Located at Wellsville, Pa. On PA. MAP find State Capital of Harrisburg, Pa. From Harrisburg take Rt. 83 South To Lewisberry Exit (Exit 35). Get off Lewisberry Exit & take Rt. 177 South & continue on 177 South through blinking traffic light. At next traffic light continue straight as 177 turns into Rt. 74 & continue to Stop Sign in Wellsville. Make left at Stop Sign onto Zeigler Rd. & go to BOWHUNTERS WAREHOUSE on Left.

Items Sold on Each Day:

Sat. April 6 - Finish all Bow Hunting Arrow Accessories, LRG. OFFICE EQUIPMENT, COMPUTERS, Typewriters Printers, Faxes, File Cabinets, & Etc.

Sun. April 7 - Large 4' x 8' Triple Deck Warehouse SHELVING, Lots of other Shelving, Shipping Equip., Postal Equip., Tons of NEW CARDBOARD BOXES never put together for shipping & sm. office items remaining from April 6.

This will be a very brief listing of important items for each day.

Sat. April 6 - Auction Office Equipment - Gateway 2000 P575 Computer, Apple Power Mac G4 Computer w/Arcus III, Gateway GP6-350 Computer, Gateway P5100 Computer, PC Work Station Business Network w/approx 2 dozen monitors. Video Viewer T.V., IBM Dot Band & Line Printers, Paper Shredders, Fax Machines, ITEK Graphix Imagemaker #540 Large Camera, 2 Artists Drawing Tables, Light Table, Best Ferrups UPS Power System (FD7), Duplo DP-4030 Duplex Printer, Scanner, Printers, AB Dick Paper Folder, Swingline Letter Opener, IBM Elec. Typewriters. Xerox XC 1045 Copier, Canon Copier, Stereo Equip., 4 nice Fire Proof 4 Dr. File Cabinets, Many other 2 dr. & 4 dr. File Cab., Metal Storage Units, Horizontal File Cab., Amana Like New Refrig., Emerson Microwaves ...

Sunday April 7 - Hundreds of Feet of Large 4' x 8' Triple Deck Warehouse Shelving, Hundreds of Feet of Good Metal Shelving, Pallet Jacks, Shipping Equipment, 10 - 10' Sections of Speedway Metal Roller Conveyors, Metal Workshop Tables, Warehouse Rolling Ladders, Various Office Desks, Chairs, Conference Table, Elec. Postal Scale, Other Shipping Equip., Many Tons of New Never Put Together Cardboard Boxes (Various Sizes), Etc.

Terms: Cash or Check Only - By Conclusion of Auction Each Day.

No Credit Cards, No Buyers Premium.

Auctioneers Note: This was an extremely large business & facility. There will be 6% PA Sales Tax on new items. Good Food & Restroom Facility on Site. Tents if needed. Conducted outdoors (dress warm).

AUCTIONEERS: RON J. & RON S. GILLIGAN #AU339-L & #AU3430-L, State College, PA. 814-237-0189.

WEBSITE W/PHOTOS www.rgilliganauctions.com.

Owner or Auctioneer not responsible in case of accident.
All Oral Info day of Auction takes Precedence over all written ads.

PUBLIC AUCTION

Farm Equipment
Sat., April 6, 2002
at 10 AM



At 1290 Stagecoach Rd., East Palmerton, PA 18071 (Between Lehighton & Brodheadsville turn South off Rt. 209 in Trachsville onto Firehouse Rd. for 1 block, continue Left onto Church Dr. - Past Agway - continue to Stagecoach Rd. turn Left to farm)

Tractors

Farmall 560 diesel, wf, fh, 100 hrs on new rebuilt engine, good rubber; Farmall Super H; Farmall M w/NI mtd husker;

Tillage

JD 15' transport disc; 14' 3 lever harrow; Case 4 btm 16" semu mtd plow; 12' spike harrow;

Hay Equipment

NH 467 haybine; Canuck 2 star tedder; JD 110 rake; JD 336 baler; (2) 8'x16' wide track bale wagons; 36' bale/grain elev; JD hay conditioner;

Grain Equipment

Ontario drill on rubber; JD 494 planter; Huskee 165 bu & McCurdy 186 bu gravity flow wide track wagons; 4 whl dump trlr; 4 whl trlr; 3 pt fert spinner spreader; 16' auger; seed cleaner; corn sheller;

Misc

NI pto manure spreader; pickup tool box; Homelite 360 16" chain saw; Farmall M trans & rear; iron butcher kettle w/tripod & gas burner; meat scale; platform scale; rough cut lumber & beams; Plus many items not listed

Visit our website www.zettauction.com

Terms - Cash, Acceptable check, Visa, M/C, Disc, AmEx

Selling for Kermit George

ZETZLEMOYER AUCTION CO., LLC
820 Nursery St. • Box 215 (610) 395-8084 Fax (610) 395-0227
Fogelsville, PA 18051-0215 "Proven Service Since 1955"
AY-000131-L

Public Auction

FARM MACHINERY - DAIRY
AND BUTCHERING ITEMS
FRIDAY, APRIL 5, 2002

At 9:00 A.M.

LOCATED IN SNYDER COUNTY, TURN NORTH OFF ROUTE 522 AT BEAVER SPRINGS, PA., ONTO ROUTE 235, TRAVEL 2 MILES TO BENFER CROSSROADS (Creek Road) TURN RIGHT, 1st Farm.

4 TRACTORS AND TRUCK

1974 Ford F-600 truck w/farm tags and 12 ft dump bed, Ford 7700 dsl tractor w/cab 1100 hrs on new motor, clutch and PTO, Ford 7700 complete engine needs rebuilt, Ford 8000 dsl tractor, Ford 5000 dsl tractor w/777 loader (front hyd pump), and AC-D15 gas tractor w/loader and front hyd. pump

FARM MACHINERY

J D. 3800 harvester w/2 rn and pickup heads, J D 3500 harvester for parts, N.I. blower PTO, 3 Badger unloader wagons 2-14 ft. and 16 ft w/tandem chassis, N H 320 baler w/thrower, N I 5209 discbine, N H. 256 rake, N H 163-4 star tedder like new, 2 N I 36 ft. elevators, 16 ft skeleton elevator on wheels, Mayrath 6 in -16 ft tube auger w/2 H P motor, grain aerator, new Diller 20 ft round bale wagon w/10T chassis, Diller 18 ft metal bale rack wagon, two 18 ft metal bale rack wagons and 2 wooden rack wagons, tandem axle wagon chassis, Winco PTO -35,000 watt generator, J D 7000 conservation 4 Rn planter w/monitor, 300 gals. field sprayer, Hinker 6 row no till cultivator, J D 6 row cultivator, Ford 2 row cultivator w/rotary hoes, N.I 305 2 row mounted picker, J.H. 700 5-16 in auto reset plow, J D 3-14 in. 3 pt. plow, Kasco 11 tooth chisel plow, J D 14 ft disk, J.D 10 ft roller harrow, J D 54 spreader, J D. 3 pt. subsoiler, 18 rolls new barb wire, electric welder, 2 metal welding benches, 2-12 ft I beams, air grease gun, anvil, blacksmith forge and tongs, chain come-a-long and misc wagon items

DAIRY AND BUTCHER ITEMS

Nice copper kettle, iron kettle and 3 foot, scalding trough, sausage stuffer, meat grinder, etc, Mueller OH-1000 gals. milk tank w/pre heater and two 3 h.p. comp's, Stiner 16 ft. silo unloader w/Patz chain and 5 h.p. motor, Clay and Badger (w/Patz chain) barn cleaners for 18 stalls each, 4 barn fans, cast iron trough, several metal farm gates and J & L. calf hutch

Terms - CASH OR APPROVED CHECK

Food stand

**HARRY (Jim) AND
SHIRLEY COLABINE**

570-658-8007

Mark Glick - Auctioneer
AU-349-L

Sale Reports

SENEKO SALE

An auction was conducted by Zettlemoyer Auction Co. on Feb. 26 in Harleysville for George Seneko Jr. There were more than 300 registered bidders.

Some highlights included a JD 215 Dura cushion disc, \$4,700; a JD 7000 conserv four row planter, \$5,500; a JD 785 manure spreader, \$8,000; a JD 6620 turbo 4WD combine, \$17,000; a JD 4250 4WD power shift tractor, \$37,000; and a 1936 JD model A tractor, \$6,250.

SEIPLE SALES

An auction was conducted by Zettlemoyer Auction Co. on March 1, 2, 4 and 5 in Easton for George V. Seiple and Son. There were over 1,050 registered bidders.

Some highlights in-

cluded a JD 7800 1996, \$49,000; a 1994 JD 9500 combine, \$40,000; a 600 series cornhead, \$10,750; a Brillion folding culti-packer, \$5,400; a 1991 GMC with cattle body, \$10,000; a Parker dump, \$18,000; and a 1997 Ford tractor, \$10,500.

WILHOMAR FARM SALE

An auction was conducted by Zettlemoyer Auction Co. on March 8 in Kutztown for Wilhomar Farm. There were over 200 registered bidders.

Some highlights included a Case 400, \$2,700; a Case 2290 with cab, \$11,000; a Case Int. 1594, \$5,750; a NH 1495 haybine cab with air, \$9,000; a 1937 Case CC, \$3,650; and a JD 7000 conservation planter with auger, \$3,000.

PUBLIC AUCTION

SAT., APRIL 6, 2002

9:00 A.M.

Old 10 x 10 Wood Shed To Be Moved - Farm Machinery - Eight Head Of Mules - Milking Equipment - Tobacco Lath - Pequea Maximerge Corn Planter 7200 Units - Two Standardbred Horses

AUCTION HELD FOR:

CHRIST P. BARBARA LAPP

On the Farm In Newburg, Cumberland County PA. Follow Rt 641, One And A Half Mile East Of Newburg Go North On Peebles Rd 1st Farm 99 Peebles Rd

Mules - Harness - Hitches

Pearl } Mam Team
Pet } Smooth Mouth Mollie Mules
Doll } Pair Smooth Mouth
Polly } Work Anywhere In Big Team
Jack } Pair Jack Mules
Jim } Work Either Side

Jerry Smooth Mouth Works Anywhere

All Sorrel Mules In Nice Condition

Eight Set Of Front Gears, Two Fiberglass Hitches 6 And 8 Head, Double - Triple Trees, 3 White Horse Tandem Hitch Assemblies, Bridles - Collars, 2 Western Saddles - Pony Saddle And Harness

Two Standardbred Trotters

10 Yr Old Chestnut Mare, 6 Yr Old Bay Gelding Both Well Broke Big Horses

Milking Equipment

Four Delaval Milker Units, 2-65 Lb Pails, S S Twin Tubs, Bender Washer, Complete Dumping Station, Milk House And Barn Supplies, Masport Vacuum Pump

Case 930 Diesel Tractor

Good Running Condition

Farm Machinery

White Horse 2 Way Plow, John Deere Disk Harrow, John Deere 12 Ft Harrow, Single Roll Cultipacker, Oliver 2 Way Sulky Plow, New Holland 455 Mower Wiscon V F 4W Engine With Clutch Reduction, New Holland 56 Rake, New Idea Crimper With Smucker Rolls, John Deere Rolo Bar Rake, New Holland 310 Baler With Engine, 2 Flat Bed Wagons, Buffalo Valley 36 Ft Elevator Like New, Hdy Unit w/Hose, Honda 13 Hp Engine w/Clutch Reduction, 3 Row Pequea Maximerge 7200 Corn Planter Insecticide Boxes In Excellent Cond. Fox Harvester Recutter With Feeder Table, Carbide Knives - Screen, McCormick Deering Corn Binder Elevator Needs Repair, New Idea 323 Corn Picker Good Condition, Gravity Bin Wagon, E L S Liquid Manure Spreader, Pequea Conventional Manure Spreader, 2 McCormick Deering Grain Binders 1 For Parts Also Full Set Of Canvas, Boom Field Sprayer, 2 Horse Produce Sprayer, McCormick Deering Little Genius 2 Bottom 14 Inch Plow, N I Cutditiou er With V-4-65 Wis Engine Clutch Reduction, Oliver Grain Drill Disc Openers, E L S Forecart, 2 Forecarts, Field Log Roller, Set Of New Steel Wheels, 2 Fuel Tanks w/Pumps, 11 Ft Cattle Feeder, 3 Ton Metal Feed Bin, Portable Generator, Some Irrigation Supplies, Pump - Liquid, Fert Dispenser, Old Wooden Doors, Windows, Bag Wagon, 6 Inch Jointer, Old Wooden Cabinets, More Items Not Listed

Bring Proper I D. To Obtain Buyer Number

Lot Of Homemade Food

Auctioneer:
Petershelm Auction Service
Steve - Orpha Rose
610-857-5200
AU 001349L

