

# UNCLAIMED FREIGHT CO. LIQUIDATION SALES INC.

"Hop On In For These Great Bargains"


**SOFA AND LOVESEAT**  
Reg. Ret. \$2200.00  
Our Price \$989.95  
**CLOSEOUT \$589.04**  
\*AVAILABLE IN 4 DIFFERENT COLORED FABRICS



**3 PC. END TABLE SET**  
In Cherry  
Reg. Ret. \$429.95  
Cash Price \$209.95  
**CLOSEOUT \$99.95**



**RAM'S HORN SOFA AND LOVESEAT**  
Reg. Ret. \$2100.00  
Our Price \$799.95  
**CLOSEOUT \$649.95**



**5 DRAWER DRESSER**  
In Pecan Oak Finish  
Reg. Ret. \$179.95  
Our Price \$89.95  
**CLOSEOUT \$39.04**



**LIGHTED CURIO**  
Available In Oak and Cherry Finish  
Reg. Ret. \$489.95  
Our Price \$229.95  
Special **\$159.88**




**3 PC. END TABLE SET**  
In Oak  
Reg. Ret. \$209.95  
Our Price \$89.95  
**CLOSEOUT \$79.95**



**6 PC. BEDROOM SET**  
Black and Brass w/2 Nightstands  
Reg. Ret. \$1229.95  
Our Price \$449.95  
**CLOSEOUT \$369.04**



**4 DRAWER CHEST**  
Pine Finish  
Reg. Ret. \$149.95  
Our Price \$69.95  
Factory Special **\$39.04**



**FUTON CLOSEOUT**  
In Black  
Comes w/8" Mattress  
Reg. Ret. \$639.95  
Our Price \$289.95  
**CLOSEOUT \$139.95**



**TWIN/DOUBLE FUTON BUNK**  
In Black Red, White, w/8" Futon Mattress  
Reg. Ret. \$998.95  
Special **\$279.95**



**GLIDER ROCKER**  
Available in Blue, Beige, Green  
Reg. Ret. \$159.95  
Cash Price \$129.95  
Special **\$79.04**



**7 PC DINING ROOM CHERRY Finish**  
w/36x60 Table  
4 Side Chairs and 2 Arm Chairs  
Reg. Ret. \$949.95  
Our Price \$449.95  
**CLOSEOUT \$309.95**



**7 PC. DINING ROOM SET**  
Oak Table w/your Choice - 6 side or 4 side and 2 arm chairs  
Reg. Ret. \$1999.95  
Factory Special **\$599.95**



**SECTIONAL "SPECIAL"**  
Available in 3 Colors  
Reg. Ret. \$2100.00  
CLOSEOUT \$649.88  
Hurry in for a Final CLOSEOUT of **\$599.03**



**3 PC. END TABLE SET - IN OAK**  
Reg. Ret. \$429.95  
Cash Price \$209.95  
**CLOSEOUT \$99.95**



**3 PC. END TABLE SET**  
Reg. Ret. \$1269.95  
Cash Price \$529.95  
**CLOSEOUT \$329.95**



**MAGAZINE END TABLE W/LAMP**  
Reg. Ret. \$149.95  
Our Price \$49.95  
**CLOSEOUT \$39.95**



**3 PC. END TABLE SET**  
Reg. Ret. \$299.95  
Our Price \$129.95  
**CLOSEOUT \$109.95**



**YOUTH'S/MATE'S BED SET**  
Bed Box w/Drawer  
Bookcase Headboard & 2 Night Stands  
Reg. Ret. \$329.95  
Our Price \$269.95  
**CLOSEOUT \$179.95**



**OPEN SUNDAYS**  
**SERTA MATTRESS & BOXSPRING**  
SINGLE Reg. Ret. \$609.95 OUR CASH PRICE **\$149.95**  
DOUBLE Reg. Ret. \$749.95 OUR CASH PRICE **\$189.95**  
QUEEN Reg. Ret. \$899.95 OUR CASH PRICE **\$249.95**  
KING Reg. Ret. \$1129.95 OUR CASH PRICE **\$299.95**  
**DEBARTOLA MATTRESS & FOUNDATION**  
Single \$109.95  
Double \$139.95  
Queen \$189.95  
King \$189.95  
PRICES INCLUDE BOTH PIECES

**FIVE PIECE DINETTE** 36x60 Table  
Table & Four Chairs - Natural, White/Natural, Green/Natural  
Reg. Ret. \$1,029.95  
Cash Price \$469.95  
**CLOSEOUT \$249.88**



3019 Hempland Road, Lancaster 717-397-6241  
Stores in: LANCASTER • YORK • CARLISLE  
STORE HOURS: Mon.-Fri. 9-9 • Sat. 9-6; Sunday 12 to 5 PM  
**CLOSED EASTER SUNDAY**  
• No Refunds • All Sales Final • Cash & Carry  
For purchases with a check bring drivers license and phone numbers  
FINANCING AVAILABLE  
Not responsible for typographical errors. We reserve the right to substitute gift items.

**MAILBOX MARKET FOR SALE**

IH Cub disk 16 blade 5' wide adjustable VGC \$300  
Ford 101 trippack plow 3 pth \$325 Northampton Co 610-759-1307

Hydra mac 12C skid steer loader, new engine, also JD 110 L/G tractor, both good shape Call eve Lycoming Co 570-494-0238

JD 290 2 row cornplanter DD openers very good cond \$1100 2 section spring tooth harrow gd cond \$75 Clinton Co 570-726-4364

JD 247 246 corn planter with fertilizer \$400 Oliver superior grain drill 6' on steel good paint \$300 Lanc Co 717-335-0977

NH 320 kick baler 346 Oliver trippack plow, two kick bale wagons, liquid manure pumps, NH 40 ft. elevator. Fred. Co. 301-271-2268.

Holstein dairy cows pick 3 or 4 out of herd of 45. 21,000+ herd avg. Dauphin Co 717-362-9407

Grade heifers vaccinated every 6 month from 10 to 21 month old, call for more info Cumb Co 717-776-7343

930 Case w/pulley good cond 2-48" barn fans w/engine, used 1 year, Benuel Stoltzfus, 514 Lees Bridge Rd Nottingham 19362 Chester Co

24 blade KBA disc, good condition Wanted round polydome calf hutches Amos K Lapp, 3128B Harvest Dr, Ronks, PA 17572 Lanc Co

5 year old saddlebred mare, traffic safe and sound John Stoltzfus 140 Cinder Road, New Providence, Pa 17560 Lanc Co \$1800

NH 54A thrower nice \$200 New NH haybine guards \$700. Ephraim Miller, 2486 Bachman Rd., Lanc. Co Pa. 717-687-5236 eves

2 bottom 12 in. White Horse plow 91 model, extra shear 2250 746 Pumping Station Rd, Kirkwood, Pa 17536 Lanc Co

ELS liquid manure spreader, 273 NH baler, 2 fore-carts, 275 gal fuel tank, 275 gal water tanks Lanc Co 717-665-5745

275 gal cube tanks, ex. for water or liquid fert. Lanc Co 717-665-5745

Nickelson tedder, new teeth \$500 2 horse JD cultivator good cond \$100 2 Farmco feeders 8 ft long Lanc. Co 717-687-3946



White 348 plow, spring reset, 3 bottom, good \$1275 1635 Haunstein Rd, Elizabeth, Pa 17022

Cub Cadet early original parts, square decks, newer Cub parts, ex cond Call with need in PM only Lyc Co 570-323-6957

JD M Good paint and tin \$2500 Komatsu dozer P65LGP good motor, bad trans \$6000 OBO Atlantic Co 609-561-6822

Used milk tank, good shape Mueller M 600 gal \$1050 Amos S Beiler, 281 Christiana Pike, Christiana, Pa 17509 Lanc Co

IH 720 5x18 auto reset, side hill hitch plow, ex Lanc Co 717-898-2088

ELS 900 gal manure spreader new in 2000 Lanc Co 717-768-3364

New Idea 504 loader 500 00 New Idea sickle bar mower, model 41 150 Bucks Co 215-860-8135

Gravely Promaster 60 20 HP \$1295 Cub Cadet 1862 mower PS hydro \$2395 Cushman turf flatbed \$1450 Wheel Horse 6175 mower \$1495. Susq Co 570-965-2102

NI manure spreader 206 needs help, good parts, flow chain 10 beaters, wood 5 paddles, wheels tires, make offer Berks Co 610-562-8298

1947 JDA NI #7 #10 corn pickers, IHC grain drill, 20 ft tri-axle gooseneck trailer 3 elevators, other equip Hunterdon Co 908-782-1725

Guinea pigs for sale, miniature Collie older dog but good watch dog, Benuel K Fisher, 235 South Jackson St., Lanc. Co., Strasburg, Pa 17579

Interior doors wooden, hollow, purebred blue heeler, farm dog \$25 Signtyper cast iron printer antique N Shirk 263 Bootjack Rd., Narvon, Pa 17555 Lanc Co

Old VW Beetle motor, parts, many new parts & used parts, Chester Co., 610-857-5729

25 new heavy duty trusses, 7/12 pitch, \$1,695, 2x14 Case rope trip plow, \$100 MO, old Gehl chopper, Adams Co., 717-624-8124

Ontario 14 double disc drill, \$175, JD 115 transport disc, \$2,000, 1975 Dodge (+ tag) dump trk., \$800, Upper Dauphin Co., 717-365-3502

8520 Case IH baler, used very little, exc cond w/side mount Kohler eng., steel wheels, like new, \$10,000, Lanc Co., 717-768-0670

Pair of Belgian geldings, 2 y/o, green broke, 3/4th brothers, Lyc Co., 570-458-6168

JD 9 3 pt sicklebar mower, 7', g.c., \$100, Chester Co., 610-273-3465

DeLaval 777 vacuum pump w/3 HP motor, take w/ or w/out motor, 5 y/o, v g cond., reason for selling moving, Lanc Co., 717-335-3915

10,000 half gal nursery containers, classic 200 type, never used, kept in dry dark storage, \$1,300, Centre Co., 570-752-2348

250 gal tree sprayer Briggs eng., g.c., \$275, 1960 Chevy 1/2T trk., 283 V8, 4 spd., will run, \$975, Lanc Co., 717-442-4085

4 ceiling fans, \$50 each, g.c., JD tractor cab, fits 5020, 380 Bell Rd., Christiana, PA 17509, Lanc Co

Gehl 3 row corn head, v g cond., \$3,500, trk cap fits Ford full size p/u, \$175, Franklin Co., 717-597-4971

Mennonite single carriage, g.c., leather driving horse harness, Luke Martin, 197 Martindale Rd., Ephrata, PA 17522, Lanc Co

2 2nd lactation cows, fresh Sept & Dec, milking 60+ lbs., no bst, \$1,675, 686 Street Rd., Cochranville, PA 19330, Chester Co

## JAY ZEIGLER Standing Seam Metal Contractor

Since 1963 "Simply The Very Best Roof Available"

**FREE Estimates**

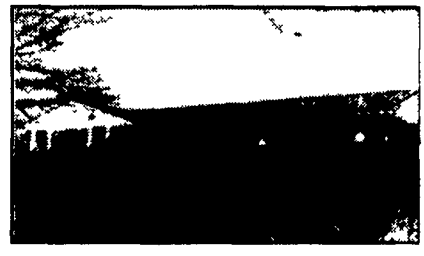
**Call For Information**



Use on Barns Or Garages



Light Commercial.



Reroof w/Metal

**ADVANTAGES:**

- Roof can last for 100 years - cost efficient
- Can be installed over existing roof (Asphalt, roll roofing, wood shingles)
- Is environmentally safe
- Beauty - colorful (galvanized, 40 lb. terne, terne-coated stainless, and painted steel in over 20 different colors.)
- Can be installed on flat roof with as little as 1/2" pitch per foot.
- Good for homes, farm buildings, garages, commercial buildings.
- Sheet in continuous length installed with concealed fasteners with double lock seam for water tight application.



New Construction

PO Box 231 Rehrrsburg, PA 19550  
(717) 933-4666 (717) 933-5305 FAX/PHONE



- NH 900 w/ or w/out crop proc.
- 1 #900 NH w/processor, long tongue metalert II
  - 1 #900 w/grasshead, new knives & shear bar
  - 1 #900 w/processor & conveyor
  - 1 892 NH
  - 1 1060 Gehl new knives & shear bar
  - 1 #800 Gehl
  - 1 #600 Gehl w/conveyor
  - 1 718 NH 540 RPM
  - 1 3960 JD w/processor, new knives & shear bar
  - 2 3940 JD
  - 1 3800 JD
  - 1 1260 Gehl w/processor, 3 row cornhead & 7' grasshead
  - 1 Case IH 8750 w/processor, like new
  - Lots of grass & corn heads available for JD, NH, Gehl

**GEORGETOWN HYDRAULICS**

Answering Service  
610-593-2753 • 8 to 10 A.M.