

WHEN AGRICULTURE IS YOUR LIFE,



Eby's complete line includes models for every requirement

BODIES

Gooseneck Trailers - Lengths 14--32', Widths 7', 7'6", 8' and 8'6"
Bumper Hitch Trailers - Lengths 12' - 18'
Grain Bodies - Lengths to 24', plus landscape and general purpose dumps to 12'
Flatbed Bodies - Lengths to 32' in 5 widths
Landscape Bodies - Lengths to 12'

GOOSENECKS

BUMPER HITCHES

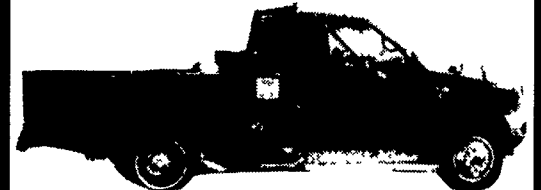


Blue Ball, PA
800-292-4752

For quality equipment and customer service that works as hard as you do, nobody offers more than EBY.

THE EQUIPMENT CHOICE IS EBY.

35 TRUCKS AND TRAILERS



99 F-450 4x4

7.3 Power Stroke; Automatic; XLT Package; Power Windows/Locks; Cloth Seats; Alum. Running Boards; Chrome Wheel Covers; (2) 36" Tool Boxes; 9' Steel Flatbed; Gooseneck/Bumper Hitches; 140,000 Miles
Asking \$22,500

Owner/Driver: Nate Eberly
717-391-7808
717-629-1281 Cell

Meadowbrook Auto Sales

875 Abbottstown Pike, Hanover, PA
717-632-9600
717-633-5789



1999 Ford F-350 Crew Cab, Dually, 7.3 Powerstroke Diesel, 5 Speed, Loaded, 91,000 Miles
Only \$24,900



1997 Ford F-250 Ext. Cab 4x4, 7.3 Powerstroke Diesel, AT, PS, PB, 78,000 Miles
Only \$21,500



1998 Dodge Ram 3500 4x4 Utility Truck, Cummins Diesel, AT, PS, PB, 77,000 Miles
Only \$19,500



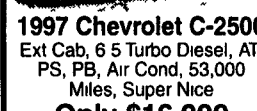
1999 Chevrolet K-3500 4x4 Utility Truck, 454 V-8, Automatic, Air Cond, Cruise Control, 58,000 Miles
Only \$18,900



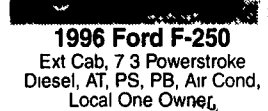
1997 Chevrolet C-2500 Ext Cab, 6.5 Turbo Diesel, AT, PS, PB, Air Cond, 53,000 Miles, Super Nice
Only \$16,900



1996 Ford F-250 Ext Cab, 7.3 Powerstroke Diesel, AT, PS, PB, Air Cond, Local One Owner, SUPER SUPER CLEAN
Only \$15,900



1997 Ford F-250 Ext Cab XLT Heavy Duty 4x4, 351 V-8, Automatic, Power Steering & Brakes, Air Cond, Cloth Interior, Super Super clean and in very nice condition
Only \$15,900



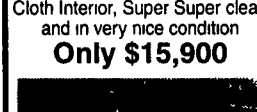
1999 Ford E-250 Ext Cargo Van, 5.4 V-8, AT, Air Cond, Power Steering & Brakes, New Tires, 73,000 Miles, Very Nice Condition
Only \$12,900



1993 Dodge Ram 3500 Ext Cab 4x4, Cummins Diesel, AT, PS, PB, A/C, Great Condition, High Miles
Only \$12,900



1994 GMC Ext. Cab 4x4, 350 V-8, Automatic, Air Cond, PS, PB, PW, PDL, Tilt Wheel, Cruise Control, Cloth Interior, Only 75,000 Miles In Very, Very Nice Condition for
Only \$12,900



1995 Ford F-350 XL 4x4, 7.3 Powerstroke Diesel, AT, Air Cond., 124,000 Miles, Needs Work
Only \$11,900



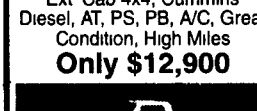
1994 Ford F-350 Ext Cab Dually, 7.3 Diesel, AT, Loaded, 98,000 Org Miles, Super Clean,
Only \$11,900



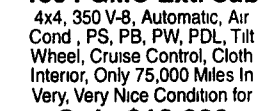
1998 Ford Ranger Ext. Cab, 4x4, 4.0, V-6, Automatic, Air Cond., P.S., P.B., P.W., P.D.L., Tilt Wheel, Cruise Control, Great Price
Only \$9,900



1994 Ford F-350 Ext Cab Dually, 7.3 Diesel, AT, Loaded, 98,000 Org Miles, Super Clean,
Only \$11,900



1998 Ford Ranger Ext. Cab, 4x4, 4.0, V-6, Automatic, Air Cond., P.S., P.B., P.W., P.D.L., Tilt Wheel, Cruise Control, Great Price
Only \$9,900



1994 Ford F-350 Ext Cab Dually, 7.3 Diesel, AT, Loaded, 98,000 Org Miles, Super Clean,
Only \$11,900



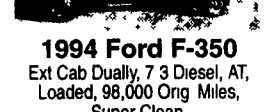
1993 Ford Bronco Eddie Bauer 4x4, V-8 302, AT, PS, PB, Air Cond, PW, PDL, Tilt Wheel, Cruise Control, 116,000 Miles, Super Nice Condition
Only \$5,900



1992 Jeep Wrangler 4x4, 4 Cyl, PS, PB, Super Clean
Only \$4,900



1998 Ford Ranger Ext. Cab, 4x4, 4.0, V-6, Automatic, Air Cond., P.S., P.B., P.W., P.D.L., Tilt Wheel, Cruise Control, Great Price
Only \$9,900



1994 Ford F-350 Ext Cab Dually, 7.3 Diesel, AT, Loaded, 98,000 Org Miles, Super Clean,
Only \$11,900



1998 Ford Ranger Ext. Cab, 4x4, 4.0, V-6, Automatic, Air Cond., P.S., P.B., P.W., P.D.L., Tilt Wheel, Cruise Control, Great Price
Only \$9,900



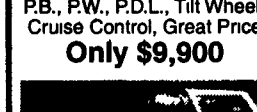
1994 Ford F-350 Ext Cab Dually, 7.3 Diesel, AT, Loaded, 98,000 Org Miles, Super Clean,
Only \$11,900



1998 Ford Ranger Ext. Cab, 4x4, 4.0, V-6, Automatic, Air Cond., P.S., P.B., P.W., P.D.L., Tilt Wheel, Cruise Control, Great Price
Only \$9,900



1994 Ford F-350 Ext Cab Dually, 7.3 Diesel, AT, Loaded, 98,000 Org Miles, Super Clean,
Only \$11,900



1998 Ford Ranger Ext. Cab, 4x4, 4.0, V-6, Automatic, Air Cond., P.S., P.B., P.W., P.D.L., Tilt Wheel, Cruise Control, Great Price
Only \$9,900



1994 Ford F-350 Ext Cab Dually, 7.3 Diesel, AT, Loaded, 98,000 Org Miles, Super Clean,
Only \$11,900



1998 Ford Ranger Ext. Cab, 4x4, 4.0, V-6, Automatic, Air Cond., P.S., P.B., P.W., P.D.L., Tilt Wheel, Cruise Control, Great Price
Only \$9,900



1994 Ford F-350 Ext Cab Dually, 7.3 Diesel, AT, Loaded, 98,000 Org Miles, Super Clean,
Only \$11,900

24 HR PARTS & SERVICE
 MON. - SAT.

Bergey's

AUTOMOTIVE EXCELLENCE SINCE 1924

GMC COMMERCIAL
 WE ARE PROFESSIONAL GRADE

SHOWROOM HRS
 M-F 9am to 9pm
 Sat 9am to 4pm

TRUCK CENTERS

SHOWROOM HRS
 M-F 8:30am to 6pm
 Sat 8:30am to 1pm

Rt. 113, Souderton - Franconia, PA. 18924
215-721-3400 • Toll Free 1-877-237-4393

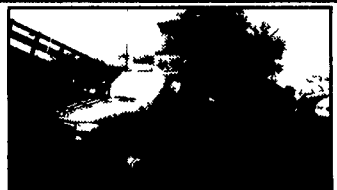
Routes 309 & 22, Allentown, PA. 18106
610-395-5808 • Toll Free 1-888-237-4397

Ask for Ralph or Mike!

www.bergeys.com

Ask for Dennis, Adam or Chris!

NEW HD DUMP! • 1-877-BERGEY3



2001 GMC SIERRA 3500HD DUMP TRUCK
 #63228, 6.6L Duramax Diesel, Allison Automatic, A/C, 10 Crysteel Dump Body with 2 Yard Capacity
CLEARANCE SALE PRICE \$30,900
 11,400 lb GVW, More! Red Sale Price Includes \$2,002 Rebate & \$900 Uplift Allowance

DEMO STAKE! • 1-877-BERGEY3



2001 GMC SIERRA 3500HD STAKE DUMP
 #63115, TC36403, 6.6L Duramax Diesel Allison Auto, A/C, 12' Stake Body w/Bulkheads & Stake Racks w/ Dump Hoist, More!
CLEARANCE SALE PRICE \$29,900
 DEMO!

GREAT CONDITION! • 1-877-BERGEY3



2000 CHEVY C30 STAKE TRUCK
 #5302, TC31403, 5.7 Liter V8, Air Cond., 11,000 lbs GVWR, 12' Stake Body, Liftgate
CLEARANCE SALE PRICE \$17,900

EXTENDED CAB! • 1-877-BERGEY3



2001 GMC SIERRA 3500HD EXT. CAB CHASSIS
 #62684 TC36053, 8.1L V8, Allison Auto, 2WD, A/C, Stereo Cassette Locking Diff, Dual Whls, Cruise Control
CLEARANCE SALE PRICE \$25,500
 11,400 lb GVW, White More Sale Price Incl \$2,002 Rebate & \$600 Uplift Allowance More!

4X4 CREW CAB DUALY! • 1-877-BERGEY3



2001 GMC SIERRA 3500HD CREW CAB 4X4
 #63257, 8.1L Vortec V8, Allison Automatic, SLE, A/C, PW, PL, PS, Bckt Seats, CD/Cass, Dual Whls, Camper Mirrors, Locking Diff, Tow Pkg, More!
CLEARANCE SALE PRICE \$32,950
 Sale Price Includes \$1500 Rebate

\$1,500 UNDER INVOICE! • 1-877-BERGEY3



2001 GMC 2500 HD PICKUP
 #63378, TC25903, 8.1 Liter V8, Allison 5-Speed Automatic, SLE Trim Pkg, Air Cond, P-Win, P-Locks, CD Player, Trailer Pkg, 9200 #GVW
CLEARANCE SALE PRICE \$23,900
 Price Includes \$1,500 Rebate, GREAT TOW MACHINE!

BLOW OUT PRICES! FREE CALL TO ALLENTOWN AT 1-888-237-4397



1999 GMC C7 CAB CHASSIS
 #6866, Model C7H042, 25,950 GVW, Cat Diesel, 207HP, 6-Speed, Air Cond, Air Seat, All New Tires, LIKE NEW!
CLEARANCE SALE PRICE \$25,900
 Under 95,000 Miles



NEW 2002 GMC W4500 CREW CAB
 #63129, NEW!, 14,500 lbs GVWR, Diesel Automatic, 12' Omaha HD Body and Omaha 516 Electric Hoist
CLEARANCE SALE PRICE \$36,975



NEW 2002 GMC W5500 CREW CAB
 #63130, 17,950 lbs GVWR, Diesel, Automatic, 14' Omaha HD Body and 516 Electric Hoist
CLEARANCE SALE PRICE \$39,995



NEW 2000 GMC 6500 DUMP TRUCK
 Stk# 62895, 25,950 lb GVWR, Hydraulic Brakes, 210 HP Cat Diesel, 6-Speed Trans, 10' Steel Galton Dump Body
CLEARANCE SALE PRICE \$38,880



NEW 2001 GMC C6500 DUMP TRUCK
 #63569, 25,950 lb GVWR, Hydraulic Brakes, 210 HP Cat Diesel, 6 Speed Trans, 10' Steel Galton Dump Body
CLEARANCE SALE PRICE \$41,950



2000 GMC K5000HD DUMP 4X4
 #7115, TK31003, 4WD, 7.4 Liter V8, 5-Speed, Am-Fm Radio, Tamaqua 2L3 Yard Dump Body, Under Body Tool Box, 25,000 Miles, CLEAN!
CLEARANCE SALE PRICE \$20,900

Sale Prices Include All Applicable Factory Rebates As of 03/25/02. Factory Rebates and Financing May Change Subject to Manufacturer's Incentives.
 PRIOR DEALS EXCLUDED. ALL PRICES INCLUDE FREIGHT, DEALER PREP, ANY APPLICABLE FACTORY REBATES & FACTORY EQUIPMENT DISCOUNT PRG. (IF APPLICABLE), ANY COUPONS AND BERGEY DISCOUNT. TAX, LICENSE & DOCUMENT FEES COST EXTRA. VEHICLES SHOWN FOR ILLUSTRATION PURPOSES ONLY. NOT RESPONSIBLE FOR TYPOGRAPHICAL ERRORS. PLEASE PRESENT AD FOR ADVERTISED PRICES PRIOR TO PURCHASE. ©BERGEY'S INC