

35 TRUCKS AND TRAILERS

7511 Allentown Blvd.
Harrisburg, PA 17112

**75 TRUCKS
IN STOCK**

**AFFORDABLE
CARS AND TRUCKS, INC.**

"You Gotta Believe!!"

New Exit #72A, Rt. 81 N; Rt. 22 East of Harrisburg; 3 Miles North of Hershey Park

717-652-1925
FAX 717-652-4888
www.autotrader.com/view/
affordable car and truck

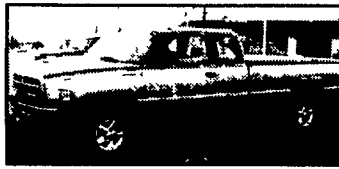


94 FORD F250 XLT 4x4 H D Ext Cab, Longbed, 7.3 Powerstroke Dsl, 5 Speed, AC, PW, PDL, Stereo, Good Clean Well Maintained Truck, 150K **\$11,995**

95 DODGE RAM 2500 4x4, SLT Laramie, Cummins Turbo Diesel, Ext Cab, Long Bed, AT, AC, PW, PDL, Stereo, Leer Lid, Only 90,000 Miles, Local Truck In Perfect Shape **\$16,450**



97 DODGE 3500 LARAMIE SLT 4x4, Dually, Cummins Turbo Dsl, 5 Sp, AC, PW, PDL, Stereo & More, Blue, 140,000 Mi, Like New **\$15,995**



96 DODGE RAM 1500 SLT 4x4 Laramie Ext Cab, Longbed, 360 V8, AT, A/C, PW, PDL, Tilt, Cruise, Only 68,000 Actual Miles, Leer Cover & More, Beautiful Showroom Cond Vehicle **\$13,500**



97 DODGE RAM 2500 4x4 SLT Laramie, Cummins Turbo Diesel, Loaded Up PW, PDL, Cruise & Tilt, 2 Tone Paint & Alloys, Only 90,000 Mi, I Have (1) 5 Speed or (1) Automatic **\$15,995 Each**



99 FORD F350 4X4 XLT LARIAT Quad Cab Longbed, 7.3 Powerstroke Dsl, AT, AC, PW, PDL, CD, Cassette Stereo, Cap Matched With Beautiful Colors, 100,000 Miles Flawless With Leather Interior **\$21,500**



96 FORD F350 XLT 4x4 7.3 Powerstroke Dsl, AT, AC, PW, PDL, Stereo, 2 Tone Blue, Real Nice Vehicle, 150K **\$14,000**



94 CHEV. GRUMAN LONG BOX Delivery Truck, 6.5 Diesel, New AT, Fully Loaded, Dual Wheels, Excellent Shape, Ready To Work, 100,000 Mi. **\$5,500**



94 FORD F250 XLT 4x4, Ext Cab Longbed, 7.3 Turbo DSL, AT, AC, PW, PDL, Stereo, Alloys, All Black, 130K, Real Sharp, Sale Priced **\$10,500**



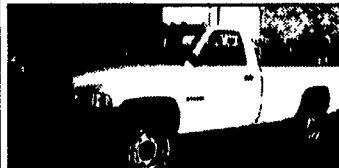
86 FORD F250 XLT 4x4 H D Ext Cab, Longbed, 6.9 International Dsl, 411 Rears, C-6 Trans This is a clean heavy duty worker, ready to roll, 98,000 Mi **\$6,995**



98 DODGE 2500 4X4 Laramie SLT, Cummins Turbo Dsl, 5 Speed, AC, PW, PDL, Stereo, Only 60,000 Miles, Showroom Condition! **\$20,995**



94 FORD F250 XLT 4X4 H D Ext Cab, Longbed, 351 V8, Gas, AT, AC, PW, PDL, Stereo, 2-Tone & More, 139,000 Mi & Superb Shape **\$7,995**



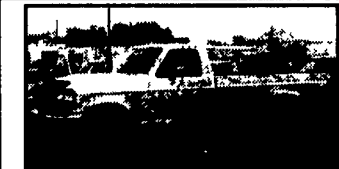
95 DODGE RAM 4X4 AT, AC, Cummins Turbo Dsl, Looks & Drives Perfect! Only 140K **\$9,995**



93 DODGE RAM 2500 H D. 4x4 Laramie SLT, Cummins Turbo Dsl., 5 Speed, Air, Loaded, Like New Shape! 130K Orig. Miles. **\$11,500**



94 FORD F250 XLT 4x4 Dually, Ext Cab, Long Bed, 7.3 Powerstroke Dsl, 5 Speed, AC, PW, PDL, Stereo, 2 Bench Seats, Extra Clean, Only 90,000 Mi **\$12,995**



95 FORD F250 H.D. 4x4, 351 V8, 5 Speed, 8,600 GVW, All 100% Factory Orig. Finish, All 100% Highway, 160K, But It's Like New & Full 1 Yr 100% Warranty Included **\$7,495**



96 FORD F350 XLT 4x4, 1-Ton Crew Cab, 7.3 Powerstroke DSL & Rare 5 Speed, Hitch, AC, PW, PDL, 2-Tone Paint, Like New, In & Out, 100,000+ **\$18,500**



93 FORD F250 H.D. 4x4, XLT Ext Cab, Longbed, 460 V8, AT, AC, PW, PDL, All Black, Only 90,000 Mi, This Is A Real Nice Vehicle, All Records **\$8,995**



97 FORD F350 XLT 4x4 Crew Cab, 7.3 Powerstroke, AT, AC, PW, PDL, Stereo, Cruise, Tilt, This Truck Is Like New Cond! Only 90,000 Mi **\$19,500**



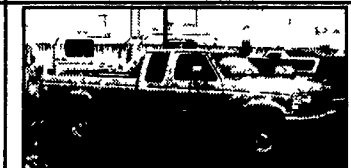
97 FORD F250 XLT 4x4 Ext. Cab, Longbed, 7.3 Powerstroke Dsl., AT, A/C, PW, PDL, Stereo, Tow Pkg. & More, Like New, 100,000 Mi **\$16,995**



93 CHEVY 2500 H.D. 4x4, 454 V8, 8,600 GVW, AT, AC, Stereo & More. Only 90K, Looks & Drives Absolutely New! Blue **\$8,995**



96 FORD F250 XL 4X4 Reg Cab, H D 8600 GVW, 7.3 Powerstroke 5 Sp, AC, Stereo, Cruise, Dk Green, All 1 Color, Excellent Shape, Only 90,000 Mi **\$13,500**



97 FORD F250 XLT 4X4 Ext Cab, Longbed H D 7.3 Powerstroke Dsl 5 Speed, AC, PW, PDL, Stereo Only 90,000 Miles, Flawless Condition **\$19,995**

ALL PRO Truck & Trailer Parts & Accessories
Distributor
7760 Allentown Blvd Harrisburg 717-671-9115
6250 Carlisle Pike Mechanicsburg 717-795-9116
Truck Repairs - Order 800-622-7003
HOURS: Mon., Tues., Wed & Fri 8-5, Thurs. 8-8, Sat. 8-2

Trailer Financing Available or

A.R.E. TRUCK CAP & LIDS • TRUCK ACCESSORIES

DUAL PORT SYSTEM
"Futuristic Receivers For Today's Vehicles"

- Dual Accessory Ports & Receiver In One Hitch
- Numerous DPS™ Accessories Increase Vehicle Capacity, Flexibility and Versatility
- DPS Improves Accessory Stability

Draw-Tite Hitch & Towing Products - Dual Port System
& towing products custom vehicle accessories www.draw-tite.com
www.dualportsystem.com

TRAILER PARTS & ACCESSORIES • TRAILER INSPECTION & SERVICE

MATHEWS EQUIPMENT CO.
Located at the intersection of Rt. 30 & Rt. 41 "GAP" (Lancaster County), PA
(717) 442-0113
Mack Trucks Our Specialty!

1998 Mack Triaxle Dump
RD688S, 350 H.P. Mack, 8LL Fuller Trans, 44K Rears on Camelback, 18K FA, Chrome Bumpers, Rad Guard, Aluminum R Tanks, 17 1/2 Aluminum Heated J&J Body, Auto Tarper, Paver Spec's, Sprayer, Exc Cond, 256K Mi. Original, New PA Insp **\$63,900**

1986 Chevy C-70
Cab & Chassis, 366 Gas V8, 5 Spd./2 Spd Rear, 21-1/2 ft of frame back of cab, new tires, runs exc, 26,000 GVW **\$4,995**

1953 Mack "LM" Prime Mover
300 HP "Supercharged" Cummins Power! 5 & 3 Tranny's, 65K Rears, 20K Front, Rare Offset CAB, Many, Many New Parts, Comes with Extra Mack Parts Trucks, LJSWX, LFSW, LM Chassis "Needs Total Restoration" **Call for Details \$15,000**

Spring Sale 2002

Creek Hill Welding
610-593-8188
CUSTOM TRAILERS

* All Lights in stock including LED are now **10% Off Retail Price!**

Part#	Description	Sale Price
PRST2X27R	2"x27" Strap w/Ratchet	\$15.49
MS-AWS204	18"x84" OSL Wooden Sign	\$45.39
PRST2X3	2"x3" Strap w/Flat Hook	\$4.99
MS-AV104	18"x84" OSL Vinyl Banner	\$15.49
MS-FG300C	18x18 Jersey Grommet Flag	\$4.29

NOW AVAILABLE:
F450 & F550 Air Ride Units...