

**- NEW ARRIVALS -**

94 Cat 953B, Cab, New UC, 7400 Hrs **\$69,000**  
 86 Cat 953, Cab, 80% UC **\$36,000**  
 85 Cat 943, Open ROPS, 80% UC **\$29,000**



99 Case 1838, 70 Hrs, Good Condition **\$12,500**



94 Ford 675D Backhoe, 4x4, Cab, Ext Hoe, 3rd Valve, Plumbed For Hammer, 4600 Hrs **\$22,000**



93 Komatsu PC150, 35,000 lb Excavator, 5700 Hrs **\$34,000**



87 Cat 953, Cab, 9400 Hrs, 70% UC **\$37,500**  
 87 Cat 953, 6000 Original Hrs **\$39,000**



94 Cat 311, 4275 Hrs, 20" Pads, New Paint **\$29,500**



98 JD 310E, Cab, 4x4, Ext Hoe, 2100 Hrs **\$33,500**



96 Traverse Lift Forklift, 35' Reach, 6000 lbs, 4000 hrs **\$27,000**

96 NH LX665 w/Backhoe Attach, Tracks, Pallet Forks, 1200 Hrs **\$16,900**

95 Thomas T173, Bucket & Forks, 500 Hrs **\$9,500**

84 JD 410B Open ROPS, 2WD, Standard Hoe **\$9,700**  
 95 JCB 210S, Cab, 4x4, 4-in-1 Bucket, 2900 Hrs **Call**



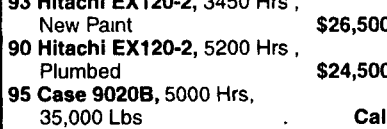
94 Hitachi EX120, 1900 Hrs **\$29,500**  
 95 Hitachi EX120-3, 5800 Hrs **\$27,500**  
 93 Hitachi EX120-2, 5000 Hrs **\$24,500**  
 93 Hitachi EX120-2, 3450 Hrs, New Paint **\$26,500**  
 90 Hitachi EX120-2, 5200 Hrs, Plumbed **\$24,500**  
 95 Case 9020B, 5000 Hrs, 35,000 Lbs **Call**



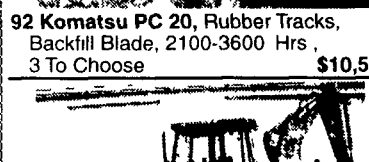
92 Komatsu PC 20, Rubber Tracks, Backfill Blade, 2100-3600 Hrs, 3 To Choose **\$10,500**

**5 To Choose From**

(4) 963  
(4) 953  
(1) 943



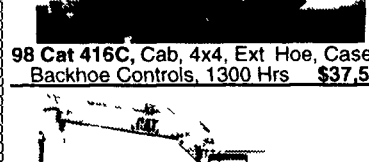
87 Cat 963, Cab, 4-in-1 Bucket, 90% Cat U C **\$42,500**



98 Cat 416C, Cab, 4x4, Ext Hoe, Case Backhoe Controls, 1300 Hrs **\$37,500**



88 Ford F350 Dually, Mechanics Body, Crane, Electric Lift Gate, New Motor, New Tires **\$7,900**



89 Komatsu PC200, 7630 Hrs, Runs & Operates Good **\$18,500**

Brand New Thomas 1700 **\$13,900**

Bobcat 943 w/Solid Tires & Grapple Bucket, 2400 lb Lift **\$9,000**

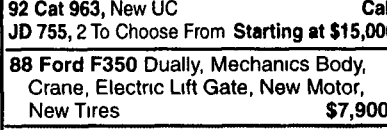
Bobcat 974, Solid Rubber & Grapple Bucket, 3700 lb Lift **\$11,000**

Bobcat 742, 3000 Hrs, Gas **\$6,500**

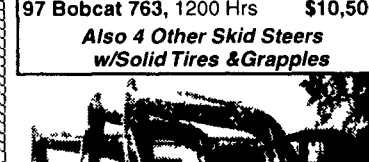
97 Bobcat 763, 1200 Hrs **\$10,500**

Also 4 Other Skid Steers w/Solid Tires & Grapples

83 Cat 963 Crawler Loader, Open ROPS **\$29,000**  
 87 Cat 963, Open ROPS, New Tracks **\$35,000**  
 92 Cat 963, New UC **Call**  
 JD 755, 2 To Choose From **Starting at \$15,000**



94 Komatsu PC40, Rubber Tracks, Backfill Blade, 3900 Hrs, 3 To Choose **\$13,000**



93 Cat 312, 4700 Hrs, New Paint **\$31,500**

Cat E120B, 2 To Choose From, Starting At **\$20,500**

94 Komatsu PC120-6, Rubber Tracks **\$32,500**

96 Komatsu PC120-6, 3000 Hrs **\$33,000**



94 Sumitoma, 13,000 lb, Rubber Tracks 3200 Hrs **\$16,500**

90 Yanmar B3, 3900 Hrs **\$8,000**

Kobelco SK42, Cab, Rubber Tracks, Backfill Blade, 9000 lbs, 3000 Hrs **\$13,000**

91 Kobelco SK60, Backfill Blade **\$17,500**

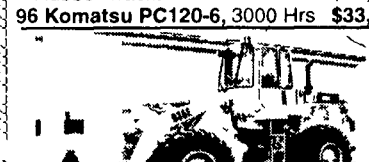
94 Hitachi EX30, 6600lbs, side swing boom rubber tracks **\$9,900**

Coleman Light Tower, Kubota Dsl **\$3,500**

Ingersoll Rand Light Tower, Deutz Diesel **\$3,500**

95 American Eagle A716 6000 Lb. Straight Mast Forklift **\$15,500**

GMC Lube Truck, 7 Tanks & Reels w/Air Compressor **\$13,500**



88 Cat 936E, New Tires, New Paint **\$36,000**

JD 544B, New Tires, Rebuilt Motor **\$16,000**

JD 644B Rubber Tire Loader **\$16,500**

81 Fiat Allis FR20 **\$14,500**

Rentals Available Day, Week, or Month

Financing and Lease Purchase Available No Sunday Calls

**Weaco Equipment**

Reinholds, PA 717/336-7375

#8276 Case 850E Dozer, 1993, Bottom 80-85%, 4700 Hrs **\$36,900**  
 #8230 Case 590 Loader Backhoe, 1993, 4WD, Cab, Ex, 3000 Hrs **\$25,900**  
 #8279 Case 580SL Loader Backhoe, 1995, 4WD, Cab, Ex, 2500 Hrs **\$34,900**  
 #8035 Case W14 Wheel Loader, 1983, Good Cond **\$18,900**  
 #8214 Case 580SL Loader Backhoe, Cab, Ext. Hoe, 2WD, Radio **\$40,900**  
 #8153 Case 580L Loader Backhoe, 1996, 4WD, Cab, Ex, 2900 Hrs **\$31,900**  
 #8176 Case 580SL Loader Backhoe, 1997, 4WD, Cab, A/C, Ex, 4310 Hrs **\$38,900**  
 #8110 AC 840 Wheel Loader, 1973, 1 1/2 Cu Yd Bkt **\$11,900**  
 #7926 Case 580K Loader Backhoe, 1987, 2WD, Cab, Ex... **\$14,900**  
 #8088 Case 580K Loader Backhoe, 1990, 2WD, Can, Ex... **\$14,500**  
 #8086 Case 580SL Loader Backhoe, 1997, 4WD, Cab with A/C, Ex, 3550 Hrs **\$34,900**  
 #8026 Case 580SL Loader Backhoe, 4WD, Cab, Ext, 1400 Hrs **\$39,900**  
 #7975 Case 580SL Loader Backhoe, 1997, 4WD, Cab, Ext, AC, 2612 Hrs **\$37,900**  
 #7976 Case 580K Loader Backhoe, 1987, Cab, 4WD, Ext, 7000 Hrs **\$20,900**  
 #7923 New Holland LX885 Skidloader, 1997, cab, good tires, tracks, 2500 hrs. **\$16,900**  
 #7786 Case 580L Loader Backhoe, 1998, 4WD, Cab, Ex, 1274 Hrs **\$43,900**  
 #7668 Gradall G660 Excavator, 22,000 Miles, 422 Hrs., 36" & 60" Buckets... **\$17,900**  
 #7699 Case 580K Loader Backhoe, 1987, 2WD, Can, Ext **\$17,500**  
 #7723 Case 1845C Unloader, 1986, Aux Hyd, Drt Bkt, New Tires, 2740 Hrs. **\$13,900**  
 #7491 Case 1840 Unloader, 1998, Aux Hyd., Drt Bkt, 1212 Hrs **\$14,500**  
 #7517 Case 580K Loader Backhoe, 1987, 2WD, Can, Ex, 4661 Hrs... **\$16,900**  
 #7516 Case 580K Loader Backhoe, 1989, 2WD, Cab, Ex, 5917 Hrs **\$19,900**  
 #7362 JD 410 Loader Backhoe, 1978, 2WD, Canopy, Standard, 3100 Hrs... **\$12,900**  
 #7870 Case 570LXT Tractor/Loader, 1996, 4WD, Canopy, 3 Point Hitch, Filled Tires, 500 Hrs... **\$24,900**

**Vernon E. Stup Co.**

5859 Urbana Pike, Frederick, MD 21701  
**301/663-3185**

**SILOS AND UNLOADERS**

**ED HEBERLE**

New & Used Concrete Stave Silos  
 Shotcrete Available  
 Silomatic & Badger Unloaders  
 Pipes - Distributors - Roofs - Doors & All General Repair

200 Mt. Rock Rd  
 Newville, PA 17241

(office) 717-776-4661  
 leave message

**RELINE SILOS WITH SHOTCRETE**

Tear Down/Rebuild Silos • All Kinds of Silo Work  
 Manure Pits & Walls • Also Concrete Pumping

**610/273-9211**

**S & N Pumping**  
**2440 Beaver Dam Road**  
**Honey Brook, PA 19344**



477 East Farmersville Rd.  
 New Holland, PA 17557  
**(717) 355-2361**



**Bunker Silos**



Precast T-Wall Concrete Bunker Silos  
 or Commodity Buildings built to suit your needs.  
 Bunkers available in 8 Ft. or 12 Ft. High

• Cat 966C loader, cab **\$14,500**  
 • Cat 980C loader, very good **\$32,000**  
 • Cat D9G dozer, cab, pony start, good **\$13,000**  
 • Cat D9G ripper, nice **\$17,500**  
 • Cat D9H, cab, ripper **\$22,000**  
 • R-50 Euclid Rock Truck **\$27,000**

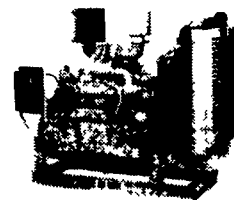
Other machines available

**(814) 267-5108**

**Diesel Engine Service**

13 Pleasant Valley Road • Ephrata, PA 17522  
 PHONE: 717-733-3890 • FAX: 717-738-3146

**JOHN DEERE & DETROIT DIESEL**



• Engines • Power Units • Generator Sets • Complete Rebuilding • Parts & Service • Rockford & Twin Disc Clutches & Parts • New JD Powertech Engines 20-500 HP



• 20-70 HP Air Cooled Diesel SilentPack Series Engines

• 7 HP Hatz Diesel, NEW!, Electric Start **\$850**  
 • 70 HP 4219D JD Power Unit w/Hood **\$5,800**  
 • 70 HP 353 DD Power Unit w/Hood **\$2,850**  
 • 120 HP, 453N DD Power Unit **\$3,200**  
 • 20 KW, 3 Phase, Gen Set, Used 271DD. **\$2,800**  
 • 250 KW, 3 Phase, Portable Gen Set, 6V92TA-DD **\$24,500**  
 • 275 KW, 3 Phase, Gen Set, 12.5 JD, Only 750 Hrs **\$29,000**

**SILOS AND UNLOADERS**

**Silo Doors & Hardware**

Double Thick Ship Lap Tongue & Groove and Plywood Doors  
 All Hardware Powder Coated  
 Built to Last for Years & Years!

**Agri-DOOR**

Unlimited Silo Doors & Hardware  
 Jacob Stoltzfus Family  
 649 South Ramona Rd  
 Myerstown, PA 17067 **877-484-4104**

**C.F. AG PLASTICS**

Call for Volume Discounts

<b>Forage Seal Bale Wrap</b>	<b>Poly Twines</b>
20"x6,000'... <b>\$36.75</b>	112-20,000... <b>\$12.02</b>
30"x5,000'... <b>\$45.75</b>	350-4,000... <b>\$13.39</b>
<b>Fabpro Bale Netwrap</b>	<b>Sisal Twines</b>
48"x9,840'... <b>\$215.00</b>	7,200... <b>\$15.50</b>
	9 & 10,000... <b>\$15.95</b>
	16,000... <b>\$17.95</b>

**800-352-3785**

**ADAM'S SUPPLY**

Kelly Ryan Center Line Baggers

Kelly Ryan Vertical Mixers

Kelly Ryan Parts

Versa Baggers

Silage Bags

Bale Wrap

Bale Tubes

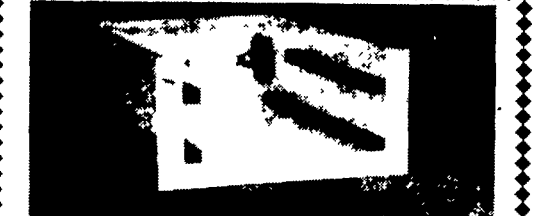
Flex Tubes

Trench Covers



4 used Baggers Available

**717-393-9282**



**ALL PLASTIC CONVEYORS AVAILABLE**

Good for Under Silo Unloaders Or Any Wet Place, In 18", 24" and 30" Also Available The Standard Wooden Conveyor And Feeder

Dealer Inquiries Welcome

We Ship Parts **717-336-2244**

In Business Since 1965  
**RISSLER CONVEYORS, STEVENS, PA**