

Public Auction Register

Closing Date Monday 5:00 P.M.
of each week's publication

Internet Sale Register will be updated
by Friday at 12 Noon

ATTENTION AUCTIONEERS

All sales register info needs complete address,
street, town, county & state.

SAT MAR 30 9 AM Farmette, tractors farm equip, JD riding mower, household goods & tools Between Blandon & Fleetwood at 325 Bartlet Rd Maiden Creek Twp, Berks Co, Pa For Irvin J Clouser Kenneth & Jason Leib Aucts AU00541-L AU003821-L 310-562-3929

SAT MAR 30 - 9AM Norman Parker Farm consignment sale 146 Jacobstown-Cookstown Rd

Wrightstown NJ L Parker Sales 309-758-8603 Lee Parker Auct

SAT MAR 30 9AM Wm P Hunter & Sons Builders Mart & Hardware Store at 1234 E Grand Ave Tower City PA Jo Ann K Hunter owner David Deiber AU001213L, Ed Shoop AU000842-L 362-2942

SAT MAR 30 - 9AM Antiques, antique truck, PA Dutch birth and baptism certificates, farm equip Valley View, Schuylkill Co Pa Richard P Murray Auct #649L 717-691-9481

SAT MAR 30 - 9AM Selling 2 Adjoining farms 78 acres & 79 acres (The Colyer Farms) in Monroe Twp Juniata Co Antiques, collectibles & household items -Lassinger & Courtney Aucts 570-339-8791

SAT MAR 30 - 9AM Farm machinery, trucks, construction equip, tools, lawn & garden equip, hay & straw At Perkiomenville Livestock & Sales Inc Robert Landis, manager & owner N Weidenbaugh 610-327-2475 AU-20986-L

SAT MAR 30- 9AM 10th Annual Farm Toy Show, tractors, trucks & more at Millburg High School 311 Wolfe Auct Au-0013-5 922-1118

SAT MAR 30 - 9AM Tractor, farm equip, antiques, collectibles, household Along Pitman to Klingerstown Rd., 1 mile W of Rt 125 & Jacks Spot Charles A Schaeffer, Carol E Schaeffer owners Mark J Jones Auct AU1595-L AU3043-L 570-286-0052

Lancaster Farming

Check out our Website

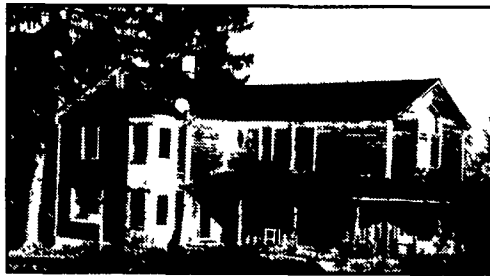
www.lancasterfarming.com

COMPLETE AUCTIONEERING SERVICE

PUBLIC AUCTION

Friday, April 5, 2002
@ 5:00 P.M.

75+- Acre Farm, East Buffalo Township
Union County, PA



DIRECTIONS: From Harrisburg take Rts 11&15 north to Rt 15 North Just north of Winfield turn left onto Furnace Rd., just before Turtle Creek Storage Travel approx 3 miles, auction will be on the left Signs posted

REAL ESTATE

The acreage is 40 tillable, 10 pasture, 23 woodland, & 2 acres for the homesite The home is a 4 bedroom, 2 story having 3 full baths, a new living room, & exceptional family room with exposed beams & open stairway to the second level The original early log home contains 2 of the bedrooms, kitchen, dining room, utility & laundry room All under renovation & need to be completed Extras include a large wrap-around porch, new 30'x40' shop with 880 sq ft single slope addition, 200 amp service & upstairs for storage. Also located on the property is a 24'x50' pole building for storage Nice country setting Call for showing

KENNETH E. HASSINGER
RR 02, Box 985
McClure, PA 17841
(570) 658-3536
AU-001532-L

NEIL A. COURTNEY
R.D. #1 Box 239
Richfield, PA 17086
(570) 539-8791
AU-002651-L

PUBLIC AUCTION

REAL ESTATE & PERSONAL PROPERTY

SATURDAY, MARCH 30, 2002

9:00 A.M.

Location: In the village of Smoketown, Lancaster County, Pennsylvania. At 2523 Old Philadelphia Pike Five miles east of Lancaster City on Route 340 east

Auction held for: **Mary E. Smoker**
REAL ESTATE @ 12:30 P.M.

Lot containing fifty-nine and six tenths (59.6) square perches, approximately one-fourth acre. Improvements thereon consist of a two-and-a-half story frame house. First floor has eat in kitchen, dining room, living room, and partial bath. Second floor has four bedrooms, and a full bath. Also has attic and basement. 2 bay garage and a shop area. Public water and sewage.

Property shown by appointment - Call **610-857-5200** or **717-397-8052**
Terms on Real Estate: 10% down sale day, final settlement on or before May 15, 2002.

PERSONAL PROPERTY - MOSTLY ANTIQUES AND COLLECTABLE ITEMS

Two china closets solid wood with claw feet; drop leaf table; empire desk side by side with bow front glass claw feet; corner cupboard; oak extension table; dove tail blanket chest; 3 piece water bedroom suit; 2 blanket chests; sewing machine; small chest of drawers; Jack and Jill house; iron dogs; apple snitz doll on rocking chair; picture Bibles; old benches; hutch; butter churn; crocks with handles; Paul Jones wicker bottle; salt crocks; 16 plate setting gold rim china; pin cushions; gold rim tumblers; set of Conesco pewter; set of bone handle flatware; silver flatware; metal Witman candy box; spoon collection; salt and shaker collection; early Adams dishes; cup and saucer set - 1800's; 2 carnival original candy dishes; other carnival pieces; set of green depression - includes sugar and spoon holder, butter dish, creamer, salt and pepper, 2 flo blue dishes; Willow Blue dishes; 2 sets of Blue Willow dishes - includes gravy boat, salt and pepper; rush bottom chair; 2 marble rollers; old picture frames; matching chairs; children chairs; chicken on nest; 2 yoo-yoo dolls; sewing basket; Aladdin light; 7 kerosene lights; glass liquid weather indicator; old doll with china head and feet; doll rocker; cane bottom child rocker; tri leg table; 2 old rockers; creselene light; wicker basket; Faith-Hope-Charity wall hanging; old Bible stand; old metal truck, in excellent condition; 2 blue coverlets; 6 quilts 30's; double bed; two dressers; Maytag washes; clothes dryer; refrigerator; lawn mower; porch swing; old wooden log vise; braided rugs, many more items not listed.

Auctioneer's note: Come on out on March 30th to see what we found in this two-and-a-half story house.

Please bring proper I.D. to obtain buyers number.

Lots of homemade food. Auction to be held under tent.

Auctioneer:
Petersheim Auction Service
Steve, Steve Jr., Orpha Rose
610-857-5200
AU 001349L



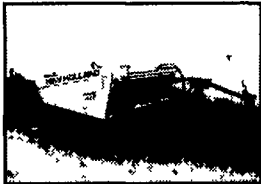
WOLGEMUTH AUCTION

MARCH 27, 2002

9:00 A.M.

CONSIGNMENT SALE

LOCATION: 109 N. MAPLE AVE.
LEOLA, PA 17540
TRACTORS ~ FARM EQUIP.
TRUCK LOTS



TRACTORS

JD 4430 W/cab & air, JD 2750; JD 2130, JD 1010, JD-D, Farmall 656, Ford 5000, Farmall Super C w/snowplow, Farmall A w/snowplow, Case 500, AC-WC w/loader, Farmall M, MH 50 w 3pt. (Not Running), MM-U (Not Running), Oliver 70 (Parts), Farmall 140 w/sickle bar mower, Farmall H

EQUIPMENT

NH 477 Haybine (Nice), JD 1327 Discbine, 7 Tooth Glencoe Soil Saver, JD 4R 7000 Complanter; NH 185 Manure Spreader, JD 54 Manure Spreader, 10' Brillion Seeder, JD 336 Baler w/thrower, NH 316 Baler, NH 276 Baler w/thrower, 2 NH 271 Balers, NH 67 Baler, MF 120 Baler w/thrower, IH 1250 Hammermill, Gehl 95 Hammermill, 425A Artsway Hammermill Gehl 782 Mix Wagon, Lucknow 285 Mix Wagon, Bin Wagons, 10' JD Disc, NH 56 Rakes, NH 258 Rake, Grimm Tedder, JD 38 Chopper, NH 718 Chopper, JD Fertilizer Spreader w/Grass Seed, 2 JD 640 Hay Rakes (1 w/Dolley wheel), JD 14T Baler, Cultmulchers, NI Wheel Rake, 2 Four Row S-tine Cultivators, JD KBA Disc, Silage Blowers, Corn Drag, Hustler 340 Front Deck Mowers, Other Riding Mowers.

NEW 3 PT. MOWERS, BLADES, STONE RAKES, POST HOLE DIGGERS, DISC HARROWS SOLD DAILY!

THIS IS PARTIAL LISTING CONSIGNMENTS COMING IN DAILY!

Next Farm Equipment:

April 24, 2002

Next Lumber Sale: April 3, 2002

WOLGEMUTH AUCTION (#2357)
Call Dennis

(717) 656-2947 FAX (717) 656-6011
http://www.wolgemuth-auction.com
EMAIL-wolgemuth-auct@juno.com

PUBLIC AUCTION

SAT., MARCH 30, 2002

9:00 AM

Charles & Esther Lefever are
discontinuing their Farming Operation.

This is an Auction of Very Clean
And Well Maintained Farm Equipment.

LOCATION: 987 Mastersonville Road, Manheim, Lancaster Co., Pa 17545. From Manheim go N. on Rt. 72 (Approx. 4 mi) to E-town Rd. and Turn Left or from the PA Turnpike Exit 20 go South on Rt. 72 to E-town Rd. turn Right, Continue on E-town Rd. to Horn Rd. and Turn Right and First Rd. Left (Mastersonville Rd.) to Auction. Watch for Sale Signs!

TRACTORS: IH 1066 4600 hrs. 20.8 Rubber, Duels, Front Wts., One Owner; IH 1026 Hydro 4975 hrs., JD 520 3pt. w/Cultivators; AC D-17 Series III; AC D-15 Series II w/Loader; AC CA w/Cultivators.

EQUIPMENT: IH 710 6 B Auto-Reset Plow; AC 19' Field Cultivator; IH 490 16' Disc; Brillion 14' Field Harrow; Glenco 7-tooth Soil Saver Chisel Plow w/Buster Bar; Brillion 12' Cultipacker w/Pups; AC 3 pt. Sickle Bar Mower; NH 281 Baler w/Thrower; NH 488 Haybine; IH Hay Rake; NH 36' Elevator; 16' & 18' Bale Wagons; NI 207 Manure Spreader; Gravity Bin w/Gear & Auger; Trailer Type Gram Cart w/Auger; JD 8200 Grain Drill; Dbl. Disc; JD 3 pt. Rotary Mower; JD 7000 4 R No-Till Complanter; 18' Flat Wagon; Century 300 gal. 3 pt. Sprayer; JD 150 gal. 3 pt. Sprayer; Tricycle 8 hp. Self-Propelled Tobacco Sprayer; Hershey 1 R Tobacco Planter; 2 R Mechanical Planter; 300 gal. Tank; 8 Tobacco Wagons; 5 Minnich Tobacco Presses; 12,000 Tobacco Lath and a Full Line of Tobacco Equipment. Fairbanks Scale; Shamaker Battery Charger w/Booster; Torch Set on Cart; Lincoln Welder; Bolt Racks w/Bolts; and many other items too numerous to mention.

1,000 Bales ~ of 1st, 2nd, 3rd, & 4th Cutting Alfalfa Hay ~ 1,000 Bales

1972 INT. 1800 Load Star, 30,000 GVW Flatbed

1967 Ford 3/4 Ton Pick Up

Red Devil 8' 2-Auger,

2-Stage Snowblower (Like New)

AUCTIONEERS NOTE: Not Many Small Items, So Come Early, Lunch Available. Order of Sale Small Items 9 AM, Farm Equipment approx 10 AM.

TERMS: Cash or Check with proper ID.

AUCTION FOR:

CHARLES & ESTHER LEFEVER
(717) 665-9383

WOLGEMUTH AUCTION SERVICE
Robert Wolgemuth #1534 (717) 665-6684
Dennis Wolgemuth & John Hess

PUBLIC AUCTION

Saturday, March 30, 2002

9:00 A.M.

Located along the Pitman to Klingerstown Road, 1 mile West of Rt. 125 & Jacks Spot. 5 miles North of Hegins, 10 miles South of Shamokin, PA. From Rt. 81 Exit 112 take Rt. 25 West approx. 6 miles to the square in Hegins and the Intersection of Rt. 125 turn North onto Rt. 125 approx. 6 miles, turn West at Jacks Spot, 1 mile to sale site. Western Schuylkill County.

TRACTOR - FARM EQUIPMENT

International 886, Good Rubber, 800 Hrs On Engine Overhaul; J.D. 5-14" Semi Mounted Plow; Massey Ferguson 410 Combine w/Grain & Narrow Row Corn Head 30"; Int. 1 Row Potato Digger, P.T.O.; Potato Planter, 2 Row; Danhauser 3 Pt. Post Hole Digger, 12" Auger; 24' Slant Bar Feeder Wagon; N.H. #36 Flail Chopper; Fox 6' Hay Head; 3 Pt 3 Bot. Plow; Saunders Snow Plow For Ford; N.I. Hay Crumper; McCormick Stationary Corn Sheller, 1 Row Corn Picker for Ford Double Row Roller Packer; 2 Section Drag Harrow; Int. Mower; 6 Ton Wagon Hoist; Ford 800 Tractor, Burned; Skid Loader, Burned; 8000 Lb. Forklift For Parts; Set of Tractor Tires on Rims (11-28) For Ford 810; Pr. 20.8x34" Tires On Int. Rims; (1) 18.4x38 Tire on Int. Rim; (5) Sets Int. Wheel Weights, Rear; (20) Ford Suitcase Weights; Pull Type Corn Planter; (2) Hardy Tree Sprayers For Parts; (4) 3 Pt. Cultivators; Gas Grain Dryer; Hand Crank Potato Grader; Platform Scale, Headgate For Steers; Wheelbarrows; Hog Wagon; (2) 55 Gal. Saddle Tanks; (2) Coal Broader Stoves w/Hoods; Heavy Log Chain; (2) 8" Belts; Barb Wire; (2) **2 Horse Cultivators;** Horse Drawn Walk Behind Cultivator; Single & Double Trees; Wagon Tongues, Dump Rake; Little Genius Trailer Plow, Hay Fork; Corn Sheller; Smidley Hog Feeders; Various Sizes; Chicken Feeders; Metal Chicken Nests; Egg Grader; Snow Fence; 5/8 Bu. Baskets; Bu. Baskets; Potato Shovels; Rough Lumber; Snow Fence; Plus Wagon Related Items, **Butcher Equipment:** (2) Butcher Kettles, Copper Kettle; Sausage Stuffers; Butcher Tools
1980 Chevy 14' Step Van, Grumman Body: 1979 Ford F250, 4WD; 1987 Firebird, Wrecked; 20' Insulated Truck Body; 12' Gooseneck Trailer, No Title.

ANTIQUES - COLLECTIBLES - HOUSEHOLD

Oak Eastlake Style Buffet; (2) Oak Plank Bottom Chairs, Rocking Chair, Buck Saws, Wooden Berry Crates, Crocks, (2) Cross Cut Saws; Hanging Scales, Egg Baskets, Singer Treadle Sewing Machine, Upright Piano, Refrigerator, Stove, Table & Chairs, Bedroom Suite, Microwave; Coffee/End Tables, Entertainment Center, Desk, (2) Recliners, Dishes; **New Oak 60" Roll Top Desk; New Oak Dry Sink;** Plus Other Items Of Interest

TERMS: Cash or PA Check.
www.auctionads.com

Lunch

Owners: **CHARLES A. SCHAEFFER**
CAROL E. SCHAEFFER

MARK J. JONES, AUCTIONEER
Phone (570) 286-0052 • Lic #AU1595-L
Jeff Dunkelberger • Lic #AU3043-L

