

Ripley Named New World Dairy Expo President

MADISON, Wis. — Roger Ripley was elected president of World Dairy Expo, Inc.'s board of directors at the recent annual meeting. Ripley is the fourth president in the show's 36-year history.

The World Dairy Expo board of directors meets three times annually to coordinate and oversee the production of the global dairy industry event. More than 65,000 producers and dairy industry enthusiasts are expected for this year's World Dairy Expo Oct. 2-6 at the Alliant Energy Center in Madison.

Ripley, president and CEO of Accelerated Genetics in Baraboo, Wis., served on the board for the past 17 years. He has been serving as vice-president since 1991. Accelerated Genetics is one of the original organizations who donated money to help form World Dairy Expo, Inc., gaining permanent representation on Expo's board of directors. Ripley is an active

industry leader in many agricultural organizations and university efforts. A facilitator, organizer, and motivator, his leadership earned him the recognition as World Dairy Expo's Industry Person of the Year in 1999. His fellow peers and board members elected him to serve as president.

Since 1969, Gregory Blaska of Sun Prairie, Wis., has been serving on World Dairy Expo's board of directors. Every year for the past 31 years, his fellow peers and board members elected him to serve as president. His vision and leadership skills have focused on the financial strength and growth of the event. This growth has been tremendous in cattle show strength and numbers, quantity and diversity of the commercial exhibits, and education seminars and farm tour programs. He has also overseen Expo's involvement in the expansion of the Alliant Energy Center's facilities, in-

cluding the new barn and the Exhibition Hall.

Blaska will continue to serve as a director on the board, representing Foremost Farms USA.

The board of directors also approved a shift in show days starting with the 2003 World Dairy Expo. A joint committee of commercial exhibitors and dairy cattle exhibitors made a recommendation that the 2003

event run Tuesday through Saturday versus the current Wednesday through Sunday. Commercial exhibitors will move-in the preceding Saturday through Monday. The Holstein cow show will remain on Saturday, followed with the supreme champion selection early Saturday evening. Other show schedule details will be finalized in the upcoming months. The last time

World Dairy Expo changed show days was in 1973 when the event was reduced from 10 to the current five days.

World Dairy Expo is an international trade and cattle show for dairy producers. Last year, 62,705 visitors from 66 countries attended the show. For more information about this year's show contact World Dairy Expo at (608) 224-6455 or go online at www.worlddairyexpo.com.

Dairy Management Seminar In Spanish Scheduled At World Dairy Expo

MADISON, Wis. — Producers with Spanish speaking employees can take advantage of topnotch dairy herd management training for their employees as part of the fifth International Dairy Short Course held in conjunction with World Dairy Expo.

The Babcock Institute at the University of Wisconsin-Madison, in partnership with World Dairy Expo, coordinates this four-day program. The seminar is sponsored by Hoard's Dairyman En Espanol.

Focusing on dairy herd management, the program will take place Sept. 29 to Oct. 2 at the UW-Madison campus and the Madison Concourse Hotel. The short course precedes World

Dairy Expo, which is Oct. 2-6 at the Alliant Energy Center in Madison.

The International Dairy Short Course will be presented in English with concurrent Spanish language translations. This educational event is intended as an opportunity for international dairy producers, veterinarians, and agribusiness professionals. It's also an opportunity for U.S. producers to offer their Spanish speaking employees focused training. Seminar topics will cover the basics of nutrition, reproduction, management, and silage preservation along with workshops on ration balancing, dairy cattle judging, and milking machine performance. There will also be tours to differ-

ent types of dairy cattle operations.

Registration for this special program is \$350 before July 10. The registration fee includes the opening reception on Sunday, Sept. 30, and breakfast and lunch Monday, Oct. 1 through Wednesday, Oct. 3. The fee also includes transportation to the university campus and farm visits, educational materials, and proceedings printed in English or Spanish. Hotel lodging costs are not included.

For complete registration and International Dairy Short Course details, contact World Dairy Expo at (608) 224-6455 or go online at <http://www.worlddairyexpo.com/sem.ids.cfm>. You can also register securely online.

Ethanol Planners

(Continued from Page A34)

they develop a business plan for the project.

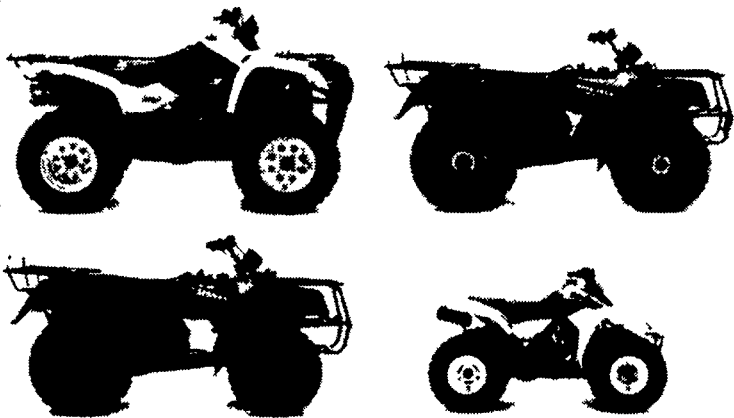
According to Welsh, financiers typically like to see members of the cooperative commit 50 percent or more of their corn crop to this kind of enterprise.

The YCEDC is continuing to

work with BBI on a more detailed market analysis for the project, with results expected in about two months, Welsh said.

Russ Montgomery, president of the YCEDC, said that it will likely take a year and a half to two years to have an ethanol facility.

RIDE SUZUKI. REAP REWARDS.



\$400
UP TO
IN FREE ACCESSORIES
OR FINANCING AS LOW AS
2.95% APR
ON SELECTED MODELS

Ready for some bounty hunting? Right now, for a limited time, buy any of several qualifying Suzuki QuadRunner® ATVs and collect some fantastic rewards! For example, choose up to \$400 in free accessories like a winch, riding apparel or maintenance supplies. Or choose financing as low as 2.95% APR on selected ATVs and keep your monthly payments at an absolute minimum. Either way, you reap the benefits of a truly great deal on the First Family of ATVs.

But hurry. SuzukiFest Rewards end March 31st, so come in and collect today!

M & S SALES & SERVICE, INC.

3385 DIVISION HIGHWAY NEW HOLLAND, PA 17557

1 1/2 Miles West of Blue Ball On Rt. 322

717-354-4726



Mon., Wed., Thurs. 8-8; Tues. & Fri. 8-5; Sat. 9-3



Call 1-800-828-RIDE or visit us on the web at www.suzuki.com for more information. See participating dealer for details. Restrictions apply. Credit approval required. Not all applicants will receive the lowest APR. The Suzuki QuadSport® 80 may be used only by those aged 12 and older. Adults must always supervise riders under the age of 16. All other Suzuki ATVs may be used only by those aged 16 and older. Suzuki highly recommends that all ATV riders take a training course. We'll even pay for it. For safety and training course information, see your dealer or call the SVIA at 1-800-852-5344. ATVs can be hazardous to operate. For your safety always wear a helmet, eye protection and protective clothing. Always avoid paved surfaces. Never ride on public roads. Never carry passengers or engage in stunt riding. Riding and alcohol or other drugs don't mix. Avoid excessive speeds. Be extra careful on difficult terrain.

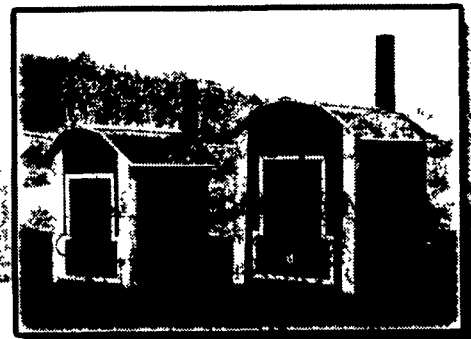


- Heat with wood and avoid expensive fuels
- Efficiently heat your home, domestic hot water, barn or shop - all with one stove
- Heavy Duty design
- Wide range of sizes (up to 1.3 million BTU ratings)
- Slide-out ash pan provides for convenient ash removal and prevents excessive corrosion
- Enjoy the convenience and safety of an outdoor stove

For More Information and Free Literature Contact:

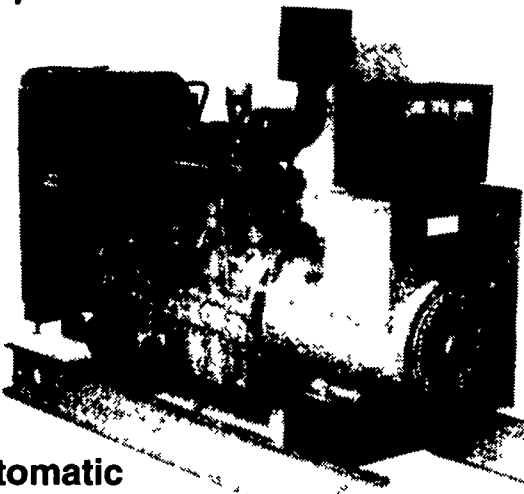
Oak Tree Stove Sales
James Sensenig
632 Elysburg Road, Danville, PA 17821
Phone: (570) 672-1096
Fax: (570) 672-3221

H. James Siegrist Pittsgrove, NJ (856) 692-2227	Stonebridge Sales New Creek, WV (304) 749-8483	Schuykill Welding Tamaqua, PA (570) 386-1177
Ed Jones Mechanicsburg, PA (717) 766-0426	Joe Hurst Plymouth, OH (419) 687-5801	Brighams Laceyville, PA (570) 869-3029



Agricultural Generators

Spectrum Detroit Diesel



Automatic
L.P. Gas, Diesel,
Natural Gas Generators
5 to 2,000 KW

P.T.O.
Generators
25 to 135 KW Units
In Stock!

Service - Rental - New & Used Units In Stock

PENN POWER SYSTEMS
Power Generation Systems Specialists

0330 Fonderwhite Road, Lebanon, PA 17042

Call Leonard Martin

717-273-4544

Fax 717-273-5186