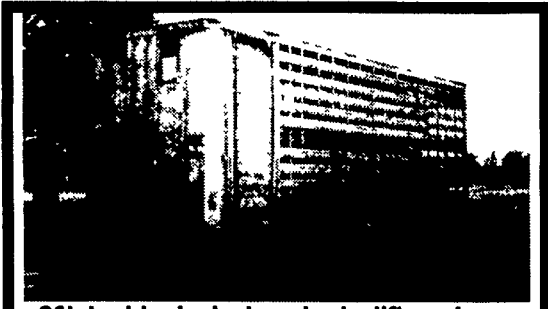


35 TRUCKS AND TRAILERS

'99 Chevy 3500 Express LS, 15 pass, 350 auto, PS, PB, PW, PDL, cruise, tilt, dual air, AM-FM Cass/CD, new Michellins, 46,000 miles, excellent condition, \$15,900. 717-733-2873

1968 Autocar truck tractor, NHC 250 Cummins, RTF 915 trans. Northampton Co. 610-863-8553



26' double deck alum. body, lift up doors \$9,500 obo • 215-256-9720

'79 GMC 7000, 16 ft steel stake body dump truck w/hyd liftgate, formerly grain truck, auto, 62k mi, curr insp, no radio, heater, defrost, oil mechanicals work, \$5000 obo. 610-375-2298

'97 Dodge 2500 12 pass, 318 auto, PS, PB, AM-FM, dual air, dark blue, 31,000 miles, new Michellins, \$11,900. 717-733-2873

1975 L800 10' dump truck 44K mi, VG cond, \$4,000. 410-775-7519.

18 ft. Steel Dump Bed, very good condition, pump & hoist.....\$5,500
Air Lift Axle.....\$1,500
IHC single axle dump truck, 466 diesel, air brakes.....\$4,500

CURRY SUPPLY CO.
Curryville, PA • 814-793-2829

7511 Allentown Blvd.
Harrisburg, PA 17112

75 TRUCKS IN STOCK

AFFORDABLE CARS AND TRUCKS, INC.
"You Gotta Believe!!"

717-652-1925
FAX 717-652-4888
www.autotrader.com/view/affordable car and truck

New Exit #72A, Rt. 81 N; Rt. 22 East of Harrisburg; 3 Miles North of Hershey Park



94 FORD F250 XLT 4x4 H D Ext Cab, Longbed, 7.3 Powerstroke Dsl., 5 Speed, AC, PW, PDL, Stereo, Good Clean Well Maintained Truck, 150K **\$11,995**

95 DODGE RAM 2500 4x4, SLT Laramie, Cummins Turbo Diesel, Ext Cab, Long Bed, AT, AC, PW, PDL, Stereo, Leer Lid, Only 90,000 Miles, Local Truck In Perfect Shape **\$16,450**



97 DODGE 3500 LARAMIE SLT 4x4, Dually, Cummins Turbo Dsl., 5 Sp, AC, PW, PDL, Stereo & More, Blue, 140,000 Mi, Like New **\$15,995**



96 DODGE RAM 1500 SLT 4x4 Laramie Ext Cab, Longbed, 360 V8, AT, A/C, PW, PDL, Tilt, Cruise, Only 68,000 Actual Miles, Leer Cover & More, Beautiful Showroom Cond. Vehicle **\$13,900**



97 DODGE RAM 2500 4x4 SLT Laramie, Cummins Turbo Diesel, Loaded Up PW, PDL, Cruise & Tilt, 2 Tone Paint & Alloys, Only 90,000 Mi., I Have (1) 5 Speed or (1) Automatic **\$15,995 Each**



99 FORD F350 4X4 XLT LARIAT Quad Cab Longbed, 7.3 Powerstroke Dsl, AT, AC, PW, PDL, CD, Cassette Stereo, Cap Matched With Beautiful Colors, 100,000 Miles, Flawless With Leather Interior **\$21,995**



96 FORD F350 XLT 4x4 7.3 Powerstroke Dsl, AT, AC, PW, PDL, Stereo, 2 Tone Blue, Real Nice Vehicle, 150K **\$14,000**



94 CHEV. GRUMAN LONG BOX Delivery Truck, 6.5 Diesel, New AT, Fully Loaded, Dual Wheels, Excellent Shape, Ready To Work, 100,000 Mi. **\$5,900**



94 FORD F250 XLT 4x4, Ext. Cab Longbed, 7.3 Turbo DSL, AT, AC, PW, PDL, Stereo, Alloys, All Black, 130K, Real Sharp, Sale Priced **\$10,500**



86 FORD F250 XLT 4x4 H.D. Ext. Cab, Longbed, 6.9 International Dsl, 411 Rears, C-6 Trans. This is a clean heavy duty worker, ready to roll, 98,000 Mi. **\$6,995**



95 DODGE 2500 RAM H.D. 4x4, Cummins Longbed, Ext. Cab, Laramie SLT w/2 Tone Paint & Trim Package, Very Low, Only 79,000 Mi., AT, AC, PW, PDL, Tilt & More **\$16,995**



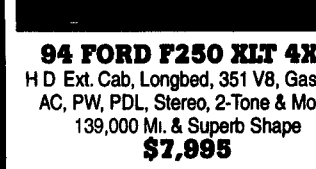
94 FORD F250 XLT 4x4 H D Ext. Cab, Longbed, 351 V8, Gas, AT, AC, PW, PDL, Stereo, 2-Tone & More, 139,000 Mi. & Superb Shape **\$7,995**



95 DODGE RAM 4x4 AT, AC, Cummins Turbo Dsl, Looks & Drives Perfect! Only 140K **\$9,995**



93 DODGE RAM 2500 H.D. 4x4 Laramie SLT, Cummins Turbo Dsl., 5 Speed, Air, Loaded, Like New Shape! 130K Orig. Miles **\$11,500**



94 FORD F250 XLT 4x4 Dually, Ext Cab, Long Bed, 7.3 Powerstroke Dsl, 5 Speed, AC, PW, PDL, Stereo, 2 Bench Seats, Extra Clean, Only 90,000 Mi **\$12,995**



95 FORD F250 H.D. 4x4, 351 V8, 5 Speed, 8,600 GVW, All 100% Factory Orig. Finish, All 100% Highway, 160K, But It's Like New & Full 1 Yr. 100% Warranty Included **\$7,495**



96 FORD F350 XLT 4x4, 1-Ton Crew Cab, 7.3 Powerstroke DSL & Rare 5 Speed, Hitch, AC, PW, PDL, 2-Tone Paint, Like New, In & Out, 100,000+ **\$18,500**



93 FORD F250 H.D. 4x4, XLT Ext. Cab, Longbed, 460 V8, AT, AC, PW, PDL, All Black, Only 90,000 Mi., This Is A Real Nice Vehicle, All Records **\$8,995**



97 FORD F350 XLT 4x4 Crew Cab, 7.3 Powerstroke, AT, AC, PW, PDL, Stereo, Cruise, Tilt, This Truck Is Like New Cond! Only 90,000 Mi. **\$19,500**



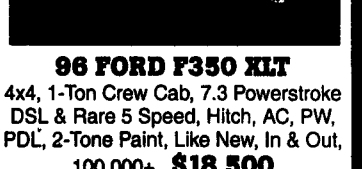
97 FORD F250 XLT 4x4 Ext. Cab, Longbed, 7.3 Powerstroke Dsl., AT, A/C, PW, PDL, Stereo, Tow Pkg. & More, Like New, 100,000 Mi. **\$16,995**



85 AUTO CAR eng L10 300, trans 8LL, 20,000 lb front axle, 50,000 lb rear axle, 9 yard Rex Mixer **\$6,500**



96 FORD F250 XL 4x4 Reg. Cab, H.D. 8600 GVW, 7.3 Powerstroke 5 Sp., AC, Stereo, Cruise, Dk. Green, All 1 Color, Excellent Shape, Only 90,000 Mi. **\$13,500**



94 DODGE DAKOTA SLT 4x4 Ext Cab, V8, 318, AT, AC, Leer Cap, Runs & Looks Perfect, All Black! 100,000 mi **\$6,995**



96 MACK CH613 72" Sleeper, 427 Eng, Eng Brake, 9 Spd, P/S, A/C, Air Susp **\$16,900**



93 CHEVY 2500 H.D. 4x4, 454 V8, 8,600 GVW, AT, AC, Stereo & More. Only 90K, Looks & Drives Absolutely New! Blue **\$8,995**



95 MACK MS 200P. 190 HP Mack Eng, 6 Speed, PS, AC, Air Brakes, 24' Van Body, GVW 25,500 **\$13,900**

H&L SALES CO.

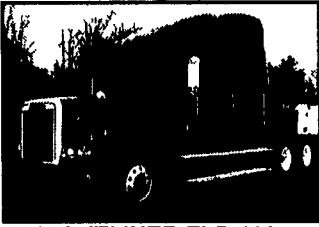
3830 North George St. Extd., Manchester, PA 17345

866-999-5600 • 717-764-3477 (York)

New Phone Numbers!
15 Units Available

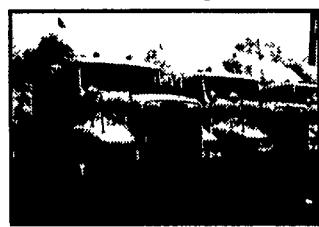
20 to Choose From

'88 FREUHAUF 45"X96"X14' VAN TRAILERS
'84 FREUHAUF 46"X102"X13' VAN TRAILERS
Roll doors, C/S doors, Waltco Lift Gates, 3500# Starting \$4,500

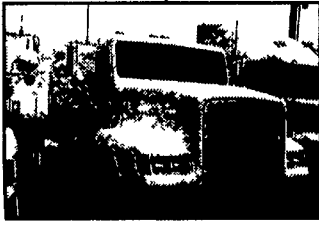


94 FREIGHTLINER FLD 120 12 7 Det 400 Hp, 9 Speed, AC, PS, 70" Condo, Air Ride Susp, Alum Front, Steel Rears Wheels **\$11,500**

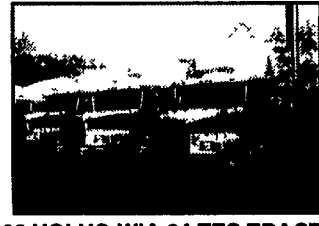
'96"X45' DRY FREIGHT VANS
22 5 Tires, Slider w/Logistic Posts



(2) 94 FREIGHTLINER FLD 120 12 7 Det 400 HP, 9 Speed, Jake Brake, Air Ride Susp, 48" Sleeper - **\$9,500**



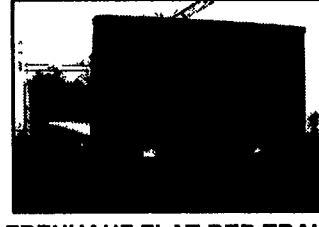
93 FREIGHTLINER FLD 112 3 25 CAT Eng, 10 Speed, Jake Brake, Air Ride Susp, 70" Sleeper - **\$7,500**



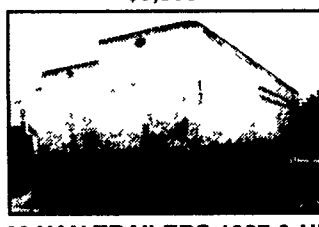
(3) 93 VOLVO WIA 64 TES TRACTOR 11 2 Det, 350 HP, 9 Speed, Air Ride, 58 Sleeper - **\$7,500**



86 OTTAWA JOCKEY TRUCK Det Eng, Allison Auto Trans **\$9,500**



96 FREUHAUF FLAT BED TRAILER 48"x102", Air Ride Susp, Spread Axle **\$7,900**



30 VAN TRAILERS 1987 & UP 48"x102", sliders, spring susp, swing doors Starting At **\$2,000**



94 FREIGHTLINER FLD 120 Det 360/430 HP, Jake, 10 Speed, P/S, A/C, Air Ride Susp, 70" Condo, Alum Wheels **\$11,500**



96 HALLMARK 43' GOOSENECK TRAILER AC, Ford Down Ramp, Side Door, 18,000 GVW - **\$13,900**



92 FREIGHTLINER S/A 11 1 Det, 9 spd, air ride susp, 40" sleeper **\$7,500**



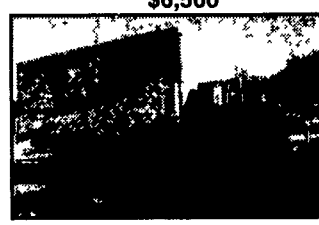
97 FREIGHTLINER FLD 120, 40" Sleeper Mid Roof, 435 HP Cat Eng, 10 Speed, Air Ride Susps, PS, AC **\$17,900**



85 AUTO CAR eng L10 300, trans 8LL, 20,000 lb front axle, 50,000 lb rear axle, 9 yard Rex Mixer **\$6,500**



96 MACK CH613 72" Sleeper, 427 Eng, Eng Brake, 9 Spd, P/S, A/C, Air Susp **\$16,900**



95 MACK MS 200P. 190 HP Mack Eng, 6 Speed, PS, AC, Air Brakes, 24' Van Body, GVW 25,500 **\$13,900**