

Finger Lakes Hay Auction

Penn Yan, New York
Report Supplied by Auction
March 15 and 19, 2002

AVG. 22 LOADS.
GRASS MIX: 1ST CUTTING 47.50-110.00, 2ND 122.50.
ALFALFA GRASS: 1ST CUTTING 75.00-135.00, 2ND 127.50-142.50.
ALFALFA: 1ST CUTTING 60.00, 2ND 120.00-150.00.
STRAW: 102.50-112.50.
HAY AUCTIONS EVERY TUES. AND FRI., 11 A.M. SHARP.

Middleburg Hay

Middleburg, Pa.
Report Supplied by Auction
Tuesday, March 19, 2002
HAY: 62 LOTS, 97 LOTS TOTAL.
ALFALFA: 13 LOTS, 110.00-225.00.
MIXED HAY: 23 LOTS, 50.00-207.50.
TIMOTHY: 9 LOTS, 70.00-160.00.
ROUND BALES: 10 LOTS, 21.00-47.00 BALE.
ORCHARDGRASS: 7 LOTS, 50.00-160.00.
STRAW: 12 LOTS, 30.00-120.00.
EAR CORN: 5 LOTS, 76.00-88.00.
OATS: 10 LOTS, 2.30-3.50 BU.

Lebanon Produce Hay Auction

Reistville, Pa.
Report Supplied by Auction
Tuesday, March 19, 2002
Hay—Straw—Grain
ALFALFA: 145.00.
ALFALFA MIX: 155.00.
TIMOTHY: 115.00.
ORCHARDGRASS: 105.00-122.00.

MIXED HAY: 142.00.
GRASS HAY: 160.00-165.00.
STRAW: 110.00-135.00.
CORN FODDER: 17.00 BALE.
SALE DAYS TUESDAYS, 10 A.M..

Shippensburg Hay Auction

Shippensburg, Pa.
Report Supplied By Auction
March 16 and 19, 2002
Hay—Straw—Grain

111 LOADS.
ALFALFA: 62.00-242.00.
MIXED HAY: 55.00-160.00.
TIMOTHY: 65.00-144.00.
CLOVER: 150.00.
BROME GRASS: 66.00-145.00.
ORCHARDGRASS: 60.00-152.00.
STRAW: 62.00-130.00.
EAR CORN: 70.00-95.00.
OATS: 2.75-2.85 BU.
MULCH: 20.00.
FIREWOOD: 30.00-42.00.

Morrison's Cove Livestock Hay

Martinsburg, Pa.
Report Supplied By Auction
Monday, March 18, 2002
Hay—Straw—Grain
ALFALFA: 150.00-190.00.
ALFALFA AND GRASS: 90.00-180.00.
TIMOTHY: 60.00-115.00.
MIXED HAY: 60.00-90.00.
ROUND BALES 52.50-102.50.
STRAW: 75.00-87.50.
HAY AUCTION MONDAYS, 12:30 P.M. CALL KEN DOWNS, 814-793-3723.

Midwest Daily Livestock Summary

Amarillo, Texas
March 20, 2002

Report Supplied By USDA

Midwest Daily Livestock Summary — Five area direct slaughter cattle were not adequately tested to establish a market trend. Steers: Live basis: over 80% Choice 71.50-73.00, weighted average 72.51; 65-80% Choice 72.50. Dress basis: over 80% 116.00; 65-80% Choice 115.00-116.00, weighted average 115.97. Slaughter heifers: Live basis: Not enough reportable sales. Dress basis: Not enough reportable sales.

At So. St. Paul terminal market not enough slaughter steers and heifers on hand for adequate test, however on a light test cattle sold 1.00-2.00 lower. Holstein steers traded steady on improved quality. So. St. Paul: Steers: Choice 2-4 1260-1380 lbs 70.00- 71.00, pkg YG 4-5 69.00. Select and Choice 2-4 1380-1435 lbs 68.75-69.00. Select 2-3 1240-1390 lbs 65.00-69.00. Holsteins: Choice, few Prime 3 1385-1880 lbs 61.00-63.00, pkgs 64.00-65.00, crossbreds 63.75-68.50. Select and Choice 2-3 1455-1630 lbs 59.00-61.00. Select 2 1120-1660 lbs 57.00-59.00. Heifers: Choice 2-4 pkg YG 4-5 1345 lbs 68.40, few crossbreds 1380-1435 lbs 67.75-68.75. Select 2-3 few 1260-1395 lbs 66.00- 69.50.

Estimated daily cattle slaughter under federal inspection through Wednesday estimated at 359,000 head compared to 373,000 last week and 379,000 a year ago.

CME Futures Closes for Live Cattle: April 70.95, down 27; June 66.65, unchanged; August 66.62, down 10.

Slaughter cows at South St. Paul sold steady on light test. Premium White 70-75 percent lean over 1200 lbs 46.75-48.25. Breakers 70-80 percent lean over 1100 lbs 45.00-47.50. Boners 80-85 percent lean over 1050 lbs 43.50-47.00. Lean 85-90 percent lean over 850 lbs 40.00-45.00, high dressing 46.00-47.50.

West Plains Ozarks Regional Stockyard Feeder Cattle Auction for Tuesday 03/19/02: Compared to last Tuesday steers and heifers traded steady to 2.00 lower. However, majority of 500-600 lbs steers sold fully steady. Most new crop fleshy calves weighing under 450 lbs were 2.00- 4.00 lower. Offerings were moderate with demand continuing to be uneven. Feeder steers: Medium and Large 1 375-400 lbs 109.50-117.00; 400-500 lbs 104.00-111.00; 500-550 lbs 100.00-105.00; 550-600 lbs 94.50-100.00; 600-625 lbs yearlings 96.00-98.00, calves 87.50-93.00; lot 690 lbs 81.00; 700-735 lbs 79.00-80.50; 820-825 lbs 74.00-75.00. Feeder Heifers: Medium and Large 1: 350-400 lbs 92.50-100.00; 400-450 lbs 93.00-97.00; 450-500 lbs 87.50-95.00; 500-600 lbs 85.00-93.00; 600-650 lbs 76.00-81.50; lot 737 lbs 73.00.

CME Futures Closes for Feeder Cattle: March 79.17, down 02; April 79.15, down 05; May 79.40, unchanged.

Barrows and gilts at terminal markets traded 0.50 lower, 32.50- 34.50 on 220-270 lb 47-51% lean barrow and gilts. The Na-

tional direct trade prices are based on 185 lbs hog carcass with 0.9-1.1 inch back fat and 6 inch square loin 1/4 inch depth plant delivered. National direct trade closed 1.00 lower with prices ranging 40.75-48.69, weighted average price 45.41. Iowa-S. Minnesota direct trade trended 1.25 lower ranging from 40.75-48.69, with weighted average price 45.54. The Western Cornbelt closed 1.00-1.25 lower with prices ranging 40.75-48.69, weighted average price 45.65. The Eastern Cornbelt prices were mostly 1.00 lower ranging from 41.00-47.97, an average price 45.05.

Hog slaughter under federal inspection estimate through Wednesday estimated at 1,130,000 head compared to a week ago 1,122,000 head and a year ago actual slaughtered 1,109,000.

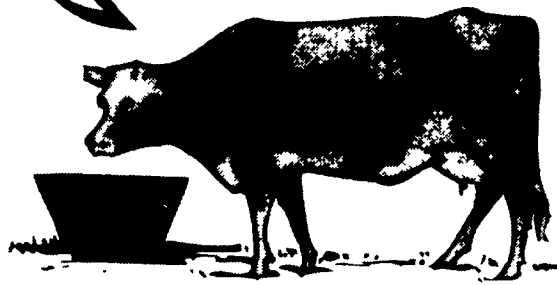
CME Future Closes for Lean Hogs: April 52.80, up 25; March 62.45, up 32; June 62.82, up 52.

Slaughter lambs traded 2.00 lower at So. St. Paul, MN. Shorn: Choice, end Prime 2-3 110-140 lbs 63.00-65.00. Woolled: Choice, end Prime 2-3 110-140 lbs 58.00-60.00. At San Angelo slaughter lambs traded 3.00- 5.00 lower. Slaughter lambs: Choice 2-3 shorn and woolled 90-150 lbs 60.00-69.00; new crop 90-120 lbs 68.00-75.00. Good and Choice 1-2 new crop 40-50 lbs 89.00-97.00; 50-60 lbs 79.00-90.00; 60-70 lbs 75.00-81.00; 70-90 lbs 69.00-75.50.

Sheep and lamb slaughter under federal inspection through Wednesday estimated at 42,000 head compared to a week ago 42,000 head and a year ago same day actual slaughtered 43,000 head.



The irresistible taste that makes cows "Moo" and



- ~ Digestibility increased.
- ~ Higher nutritional value.
- ~ Molds destroyed.
- ~ Palatability enhanced.
- ~ Improved herd health.
- ~ Toxic enzymes are minimized.

Schnupp's Grain Roasting, Inc.

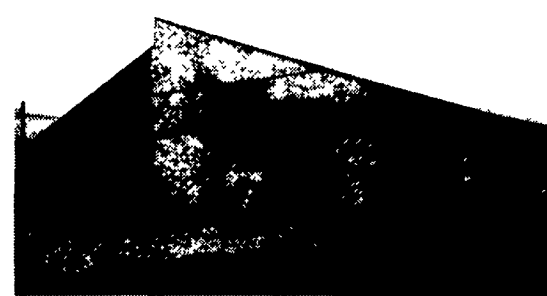
416 Union Rd., Lebanon, PA 17046
1-800-452-4004 717-865-6611

David N. Groff
Rt. #3 Lewisburg, PA 570-568-1420

TUNNEL VENTILATION



76 Cow Tie Stall Barn, Denver, PA



6 Row Free Stall Barn, Mt. Joy, PA

- Better Temperature Control Means More Milk
- Summer & Winter Ventilation
- Control Fly Problem
- Top Quality Acme Engineering Fans
- New 54" Metal Slant-Housing Fan, Up to 29,600 CFM
- 50" Fiberglass Up to 23,900 CFM

CALL THE VENTILATION EXPERTS
We have the experience you need to give the service you want.



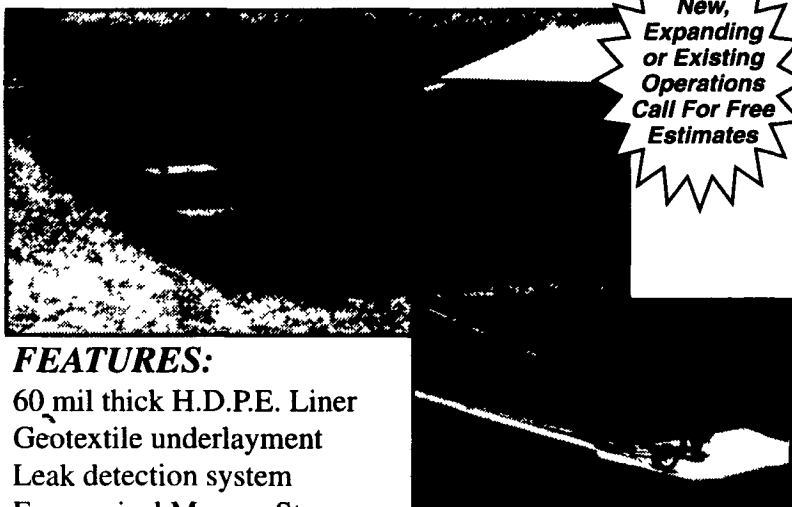
LAPP'S BARN EQUIPMENT, INC.

5935 OLD PHILADELPHIA PIKE (Rt. 340), GAP, PA 17527
PHONE: 717-442-8134 • FAX 717-442-3112

SALES & SERVICE

SITE EXCAVATION

Installation of H.D.P.E. Liner Systems for:
Dairy, Hog, and Veal Manure Storage Facilities
Golf Course and Recreational Ponds



New, Expanding or Existing Operations Call For Free Estimates

FEATURES:

- 60 mil thick H.D.P.E. Liner
- Geotextile underlayment
- Leak detection system
- Economical Manure Storage
- Seals manure in, subsurface water out
- Concrete ramp for manure agitation and pumping

MANADA CONSTRUCTION CO.

1942 Camp Swatara Road • Myerstown, PA 17067
Ph; (717) 933-8853 • Fax: (717) 933-8078

MARTIN'S TIRE & ALIGNMENT



We're Your Firestone Farm Tire Dealer!
Count on us year-round for:

- A complete line of Firestone farm tires
 - In the field emergency repair service
 - Implement and light truck tires in stock too!
- Many Other Tires In Stock - Call For Prices



FARM TIRES

Traction Field & Road		Firestone All Traction 23°		Firestone Radial 23°	
13.6 x 28	6 ply \$195.00	18.4R34	1★ \$525.00	18.4R34	1★ \$525.00
18.4 x 30	6 ply \$345.00	20.8R38	1★ \$695.00	18.4R38	1★ \$535.00
18.4 x 38	6 ply \$365.00	20.8R38	2★ \$835.00	20.8R38	1★ \$685.00
20.8 x 38	8 ply \$510.00	20.8R42	2★ \$885.00	18.4R42	2★ \$670.00

Visit or call us today!
MARTIN'S TIRE & ALIGNMENT
Located in Churchtown
119 Water St., Narvon, PA 17555
717-445-4993



THE LEADER IN THE FIELD