

OVER 120 TRUCKS

Bobby Gerhart's Truck World

2400 E. Cumberland St. Rt. 422 Lebanon, PA 17042 717-273-7995

95 FORD F350 CREW CAB DUALY
Power Stroke Diesel, XLT, Centurion Conversion, AT, A/C, Most Options, TV, VCR, 84,000 Miles, Black, #F2005



96 FORD F-250 CREW CAB
4x4, Power Stroke Diesel XLT, 5 Spd, All The Equipment, 53K Mi, Green



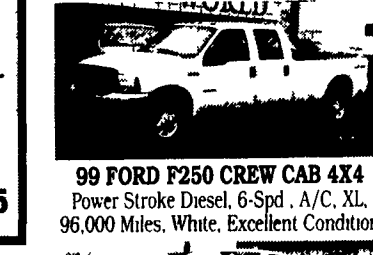
98 DODGE RAM 3500 QUAD CAB DUALY
4x4, Cummins Turbo Diesel, SLT, AT, A/C, Most Options, Stereo Cass., CD Player, 98,000 Miles, White, Absolutely Excellent Condition #F1092



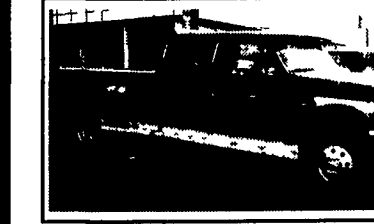
00 FORD F250 QUAD CAB
Power Stroke Diesel, AT, A/C, All the Equip 32K Mi., White



99 GMC K2500 CREW CAB 4X4
Shortbed 350 V8 AT A/C, PS PB 54,000 Miles Perfect Condition Red



98 DODGE RAM 2500 QUAD CAB
4x4, Short Bed, Cummins Turbo Diesel, SLT, AT, A/C, Most Options, 131,000 Miles, White



1997 FORD F350 CREW CAB DUALY
4x4, Power Stroke Diesel, Centurion Conversion, PW, PDL, Cruise, Tilt, TV, VCR, Lots of Extras, Black w/Gray Leather

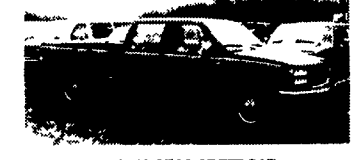


97 CHEV 3500 CONTRACTOR DUMP
4x4, 6.5 Turbo Diesel, AT, AM/FM, 64,000 Miles, Red #C623

99 FORD F250 QUAD CAB
XLT, 4x4, Power Stroke Diesel AT, A/C, Most Options Alloy Wheels, 23,000 Miles Burgundy #F1096



99 CHEVY 3500 CARGO VAN
w/Bin System, 350 V8, AT, A/C, PS, PB, 44,000 Miles, White #C618



94 GMC 3500 CREW CAB
4x4, AT, A/C, C, 454 V8, 56,000 Miles, Red & Black #C226



99 CHEV 3500 CREW CAB DUALY
4x4, 454 V8, Silverado, AT, A/C, Most Options, 68,000 Miles, White w/Grey Leather #C607



99 FORD F550 w/14 ft. STAKE BODY
Power Stroke Diesel, AT, AM/FM, 17,500 GVW, 65,000 Miles, White #1057



95 GRUMAN 6.5 DIESEL
Alum 14 ft., Auto, 14,000 GVW



96 FORD E350 SUPER DUTY 16 FT. CUBE VAN
Power Stroke Diesel, AT, AM/FM/Cass., 14,000 GVW, 55,000 Miles, Black



89 FORD F450 SUPER DUTY
10 Ft Contractor Dump, 5 Spd, 460, Maroon, Very Nice, 15,000 GVW \$9,995



95 FORD F350 CONTRACTOR DUMP
460 V8, 5 Spd., XLT, A/C, 78,000 Miles, Red



93 FORD F350 CREW CAB DUALY
Centurion Pkg, 7.3 Diesel, 5 Spd, A/C, Most Options Excellent Condition, 104,000 Miles Brown & Gold #F1097



92 DODGE RAM 3500 STAKE BODY DUMP
5.9 Cummins Diesel AT, PB PS Over 100,000 Miles but Excellent Condition #D359



99 FORD F-250 QUAD CAB
4x4, Power Stroke Diesel, AT, XLT, PW, PDL, Tilt, Cruise, Silver, 116K Mi., Very Nice Cond



87 CHEVY C60
16 Ft. Stake Body Dump, 5 Sp x 2, Diesel, 111K Mi., Black



97 GMC 3500 4X4 SINGLE WHEEL CHASSIS
5-Spd., 350 V8, A/C, 34,000 Miles, Maroon



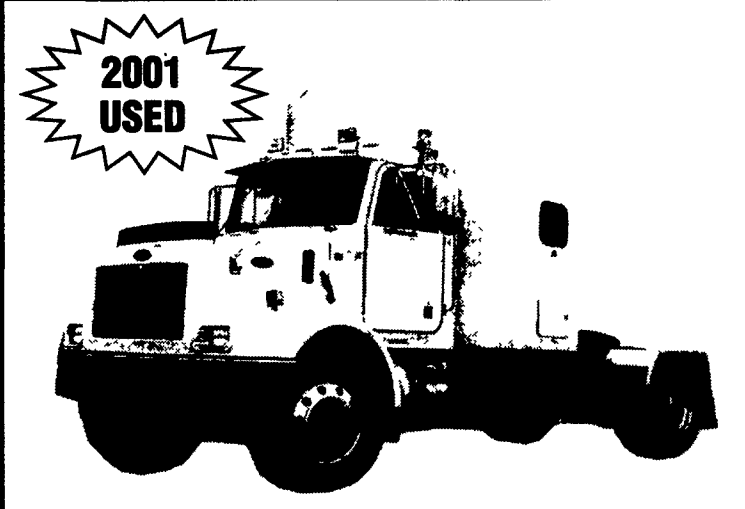
95 CHEV KODIAK
10 Ft. Dump, AT, 366 V8, 44,000 Miles, 26,000 GVW



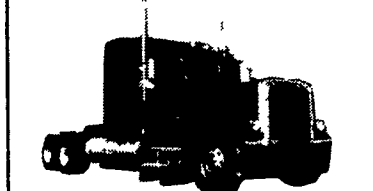
88 FORD F350 SUPER DUTY 12 FT. STAKE DUMP
460 V8, 5 Spd., 15,000 GVW, Only 78,000 Miles, Red, #F1059

HUNTER KEYSTONE PETERBILT

1467 Manheim Pike • Lancaster, PA 17604
717 299-6630 • 800 243-2458

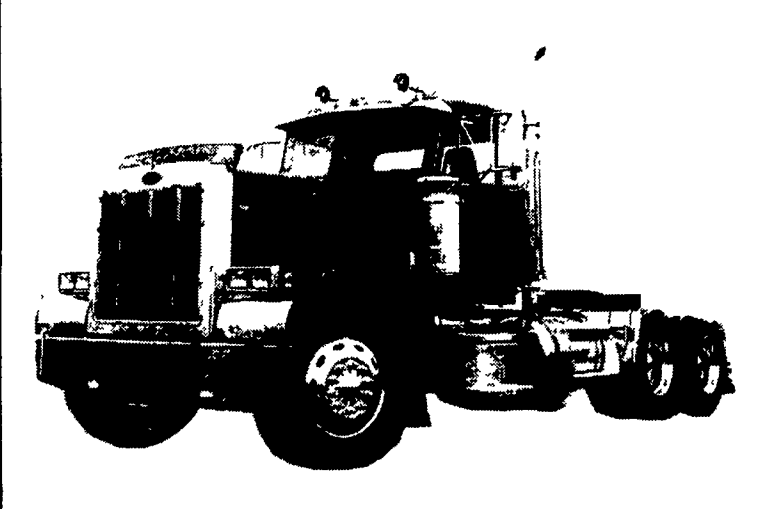


2001 PETE 330 TRACTOR; 300 H P Cat, 9-Spd, Air Brakes, 60" Hi Top Sleeper w/Upper Bunk, Alum Whls, Headach Rack, 5th Whl, 214" WB, Stock #M544447

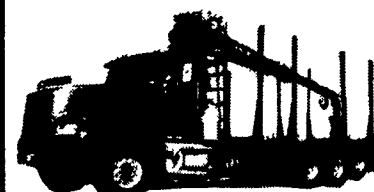


2000 Pete 379-127; 550 Cat w/Jake, 18-Spd, 280" WB, 3.70 Ratio, Full Locking Rears On Air Leaf, Amer Class Int 63" Stand Up w/Upper Bunk, Needs Some TLC!!! Stock #N508461

We Buy Used Trucks !!!
Call Chris Vanatta
Used Truck Manager
800-243-2458



1999 PETE 379-L DAY CAB; Cummins N14-460E w/Jake 10-Spd, 210" WB, 4.11 Ratio Air Trac Susp, Dual Exhaust & Breathers, Alum Air Tanks & Wheels, Stock #505596



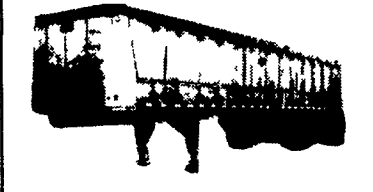
1998 MACK CL 713 LOG LOADER; E7-427 w/Jake, 8LL, 20/44 Axles On Camel Back, Prentle 120C Log Loader With 4 Bunk Rails, Stock #005714



1997 Pete 379 Tractors; 435 3406E Cat w/Jake, 10-Spd, 3.90 Ratio, Low Air Leaf, 230" WB, 48" High Top Sleeper, Dual Exh & Breathers, Alum Whls, Clean Local Trades, Stock #427221



1996 Pete 378; 435 Cat w/Jake, 18-Spd, 245" WB, Pete Air Trac Susp, 63" Flat Top, Stock #404118



1996 MAC FRAMELESS DUMP TRAILER; 40'x72"x102" Alum Draft Arms, Tandem Spread Air Ride, 24.5 Alum Wheels, Tarp, Air Gate, Stock #096431



1995 FLD120; 430 Detroit, 9-Spd, 208" WB, 48 Condo w/Upper Bunk, Air-Ride, Clean Low Mile Truck! Stock #596955



1995 Pete 378; Cummins N14-430 w/Jake, 18-Spd, 280" WB, 14.6 Frt Axle, Lift Axle, 40 Rears, 63" Flat Top, All Alum Wheels Stock #73380PA



1993 FREIGHTLINER FLA10464T; 365 Detroit 10-Spd, 180 WB 3.36 Ratio, Raised Roof Sleeper w/Upper Bunk S/S Wheel Covers Air-Ride Stock # 486036



1992 PETE 379-L; Cat 3406 400 HP w/Jake, 10-Spd, 240" WB 48 Flat Top, (10) Alum Wheels, Air Trac Susp, Stock #321588



1989 Mack MH612; E7-300 HP, Fuller 9-Spd, Single Axle w/Air Tag Axle 11R22.5 Tires Good Cheap Cabover! Stock #004618



1984 Pete 362; 400 H P Cummins w/Jake 9 spd 160 WB, (6) Alum Wheels, Air Leaf Susp, Clean Truck! Stock #172022