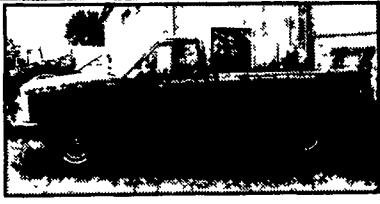


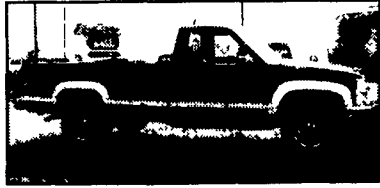
98 CHEVY K2500

Ext Cab, Cheyenne, 4x4, 350 Vortec, AT, A/C Cruise, Tilt, Cass, 8600 GVW, 373 Ltd Slip Rear, 43K Mi, Black
\$18,900



98 CHEVY K2500

4x4, Cheyenne, 350 Vortec, AT, A/C, Cruise, Tilt, Cass, 8600 GVW, 373 Ltd Slip Rear, 73K Mi, Blue
\$14,900



97 CHEVY K2500 SILVERADO 4X4

6.5 Turbo Diesel, AT, A/C, PW, PDL, Cruise, Tilt, Cass/CD, 8600 GVW, 373 Ltd Slip Rear, 4 New tires, Clean Truck, 70K mi, Dk Green & Silver
\$15,500



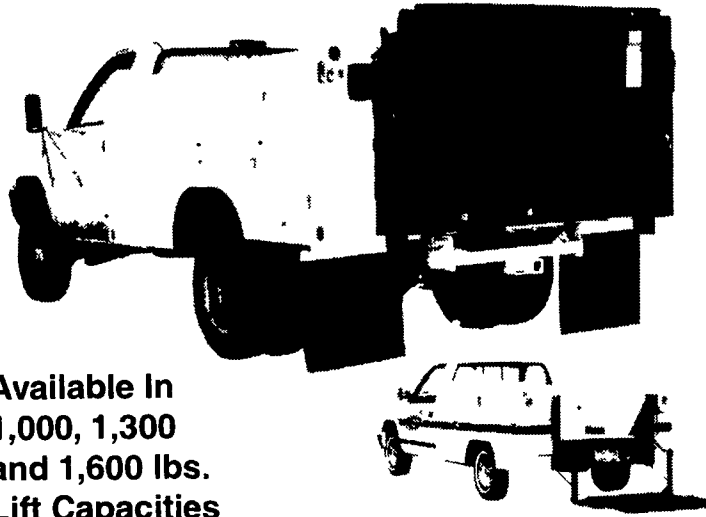
99 GMC K3500

Crew Cab, SL, 4x4, 350 Vortec, A/C, AT, Cruise, Tilt, Cass, 9200 GVW, 410 Ltd Slip Rear, 67K Mi, Clean Local Truck, Gray
\$20,900

MARTIN'S AUTO SALES

1025 W. Main St. New Holland, PA 17557
(717) 656-6621

The original
TOMMY GATE
 hydraulic lift



Available In
1,000, 1,300
 and **1,600 lbs.**
Lift Capacities

Sold, Serviced & Installed at

ANNVILLE EQUIPMENT CO.

470 Palmyra Bellgrove Road, Annaville, PA 17003
717-867-4631 1-800-233-0520

35 TRUCKS AND TRAILERS

1994 Ford E150 cargo van, good cond, heavy springs, ladder rack, good inspection, \$4,000 OBO. 717-757-2237.

2001 Supreme truck body, 12' translucent roof, overhead door, slide out ramp, like new, \$1,900. 1995 Dodge Ram 2500, 109K mi 2 tone blue/gray, auto trans, \$6,500 OBO. 717-866-7313.

1978 Mack w/300 Mack eng & tandem back wheels. 12' Stoltzfus spreader body w/12' booms. Spreader has fully hydraulic controls. Call 908-459-4350, Ed Range, Columbia, NJ.

'97 Chevy Cheyenne 2500 HD, 3/4 ton, 2WD, 350 auto, PS, PB, AM-FM, 8,600 GVW, new radials, 87,000 one owner miles, dark green, excellent condition, \$7,950. 717-733-2873

'96 Chevy Cheyenne 3500 SRW, 4dr, crew cab, 350 auto, PS, PB, AM-FM, 9,000 GVW, new radials, 87,000 one owner miles, white, excellent condition, \$11,500. 717-733-2873

'97 Chevy Cheyenne 2500 extended cab, 2WD w/8' Reading utility body, 350 auto, PS, PB, air, AM-FM, 8,600 GVW, new radials, 80,000 one owner miles, red, \$12,500. 717-733-2873

18 ft dump box. 427 Chevy eng, 361 Ford eng. (2)5 spd trans. (1)2 spd rear. 1983 Isuzu pup dsl, 4x4. 570-275-1189

'82 Peterbilt cab-over, 362 style, 400 Cat, 15 spd, 370 rears, dual exhaust, runs & looks good, \$5,500. 570-374-4601

1976 Chevy walk-in truck, automatic, w/aluminum body. 570-648-8048

1996 Freightliner FL50, 186" WB, 143,000 mi, auto, air, AM/FM radio, \$16,000. 570-847-1001

93 Dodge Dakota SLT 4x4, ext. cab, 3.9L, cap, runs great, 98k miles, \$6000. 717-865-5930

'83 Ford L9000, 350 Cummins eng, 6000 gal vacuum trailer, Moro vacuum pump on tractor, \$20,000. 717-626-5591

'88 Eby stock trailer, 18 ft gooseneck, ex cond, \$5500 obo. 410-836-2520

'85 GMC 7000 truck, 100,000 mi+, 20 ft alum body, ex cond, 35,000 GVW, 427 gas motor, air brakes, \$8000. 717-862-3372

'65 Chevy 1 ton stakebody, straight 6 motor, dual wheels, 68,000 orig miles, fair cond, great farm truck, tows great, runs great \$1500. 610-864-8326

New Holland TRUCKSTOP

OVER 50 NEW HEAVY DUTY TRUCKS & 20 CARGO VANS IN STOCK!



NEW 2002 FORD F-350 4x4 V10

4 dr, auto, 6.8L, A/C, cass, cruise!
Save \$3752 from MSRP:

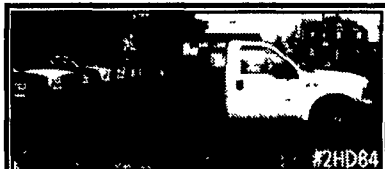
\$28,993

'02 E-250 SUPER CARGO \$20,998

Auto, 5.4L V8, A/C racks & bins, airbags! #2F290

'02 FORD F-250 4X4 \$22,983

Auto, 5.4L V8, snow plow prep, A/C! #2HD148



NEW 2002 FORD F-550 CHASSIS XLT

6-spd, V8 diesel, A/C, cass, cruise!
Save \$4633 from MSRP:

\$30,922

'02 FORD F-350 4X4 \$24,955

Auto, 6.8L V10, ltd slip diff, A/C, cass! #2HD198

'02 F-550 CHASSIS CAB XLT \$30,922

6-spd, ltd slip diff, 7.3L V8, diesel, A/C! #2HD84



NEW 2002 FORD F-350 CREW CAB 4x4

XL, V8, diesel, 6-spd, A/C, cruise!
Save \$3736 from MSRP:

\$32,959

'02 F-350 CREW CAB 4X4 \$30,994

7.3L V8, diesel, 6-spd, A/C, cass, cruise! #2HD156

'02 FORD F-250 S/CAB XL \$31,924

4x4, diesel, auto, ltd slip diff, 7.3L V8, cass! #2HD92



NEW 2001 FORD F-450 w/ EBY DUMP

Auto, 6.8L V10, 11' dump body, A/C!
Save \$6000 from MSRP:

\$34,933

'02 FORD F-350 CREW CAB \$33,933

4x4, 7.3L diesel, XL, auto, cass, cruise! #2HD151

'02 FORD F-250 S/CAB 4X4 \$33,953

XLT, auto, V8, diesel, A/C, PW, cass/CD! #2HD172

PRE-OWNED WORK TRUCKS!

WE ALWAYS HAVE A HUGE SELECTION OF USED TRUCKS! Here is a partial listing:



1984 FORD F-700 STAKE BODY

V8 engine! Ready to Work!
Buy Now For Only:

\$6,994

'91 FORD EXPLORER 4X4 \$5,997

XLT, V6, auto, PW, PL, cruise! #2F478A

'95 FORD F-150 SUPER CAB \$11,950

4x4, E. Bauer, V8, auto, pwr wnds! #P2226C



2002 FORD E-150 CARGO VAN

V6, auto, air cond, pwr wnds/lks!
Buy Now For Only:

\$14,950

'93 CHEVY K1500 SUPER CAB \$11,950

4x4, 350 V8, auto, pwr wnds! #2F515B

'97 FORD F-150 4X4 \$12,987

V6, auto, A/C, 58k miles! #N2029B



1997 FORD F-250 CREW CAB

4x4, XLT, diesel, auto trans!
Buy Now For Only:

\$24,482

'96 CHEVY K1500 S/CAB 4X4 \$13,950

V8, auto, PW, PL, cruise! #2HD143A

'99 FORD EXPLORER 4X4 \$18,950

XLT, V6, auto, A/C, PW, PL! #P2276



1999 FORD F-250 CREW CAB

4x4, XLT, diesel, only 22k mls!
Buy Now For Only:

\$29,490

'00 FORD RANGER S/CAB \$18,990

4x4, XLT package, V6 engine! #P2278

'00 FORD E-350 XLT \$19,897

15 pass var, V10, pwr wnds/lks! #P2282

Where A Little Country Means A Lot Of Savings!

New Holland



508 W. Main St. (Rte. 23)
 New Holland, PA

Call toll free:
1-866-359-3766

www.newhollandauto.com

Tax, tags & license fees addtl Prices on new vehicles include all applicable rebates

TRAILERS
 HORSE & LIVESTOCK TRAILERS
 NEW/USED TRAILER
 RESTORATION WORK
 HITCHES INSTALLED
 - INSPECTIONS DONE
443-528-8321



1984 White Volvo Triaxle
 400 Cummins
 13 Speed 18F 38R,
 Double Frame, 24Ft
 MH Eby Dump Box,
 Roll Tap
 LW#24,500 Lbs
(717) 733-7226