

FOR SALE



99 FORD WINDSTAR LX
 4 Dr, V6, Dual A/C, Most Options,
 52,000 Miles, Black \$13,800
**3 More BLACK WINDSTARS
 IN STOCK**
 Call 717-336-3130



1996 Peterbilt
 Detroit 430 10 sp, 11:25 all Alum.
 Dual Everything, Loaded & Low Miles,
 Go First Class
\$28,000.00 OBO
717/626-8538

35

**TRUCKS
 AND
 TRAILERS**

MOVE 'EM OUT



**"NEW"
 Knapheide
 "L"
 BACKPACK
 TOOL
 BOX**



1997 INTERNATIONAL 4900
 33,000 GVW, DT466 210HP, 6-Spd; Air Brakes;
 24' FRP Van with L/G; Lease Maintained

- All Steel - Paint Driftwood Satin Glo Silver
 Take It Away - Or We Can Mount
 On Your Chassis



2000 INTERNATIONAL 4700
 25,500 GVW; T444E-175HP, Auto; Hyd Brakes,
 24' FRP Van w/2500-Lb L/G, Super Low Miles



2003 ISUZU
 NRP - NQR Are Here!
 Call with your spec

LOTS OF OTHER ISUZUS IN STOCK

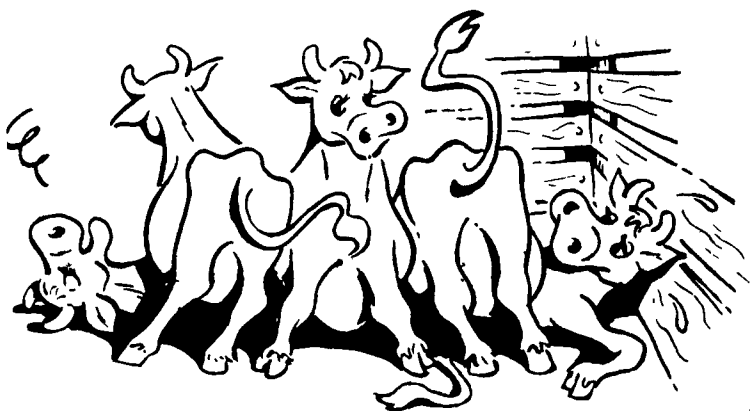
WE DELIVER ANYWHERE!!!



FIVE STAR ISUZU ★★ ★

New Toll Free - 1-877-54ISUZU Keith Eshelman
 (544-7898)

make it Milk SM



COME ON YOU GUYS... MOVE OVER!

NEED MORE ROOM?
Read The Real Estate Ads
In Lancaster Farming's
Classified Section

ALL STAR



New Trucks

(1) 2002 Mack CV703
 E7-427 w/Engine Brake
 T2130B, 18 Frt, 46 Rear, 227 W B

(1) 2002 Mack RD600,
 E7-460, RTOF16908LL, AL461,
 4.35R, W.B. 236

Used Trucks

Low Mileage - 165,000
(2) 1999 Mack CH613, E7-355/380,
 Engine Brake, 10-Spd., Air Ride

1998 CH 613, E7-427, Engine Brake,
 10-Spd, Air-Ride, 64 in. High Rise,
 Alum. Wheels

1997 CH613, Axle Back, E7-350, 10-Spd

(2) 1997 CH613, Axle Back, E7-350,
 10-Spd, 64" Mid-Rise Sleeper

1995 CH613 42 in High-Rise

1993 CH613 E7-350, Axle Back

Truck Technicians Needed - Call for Details

LESHER



**SALES &
 SERVICE**

2700 Cumberland Sts. Lebanon, Pa. 17042
 (Route 422 West)

website www.leshermacksales.com

717-273-4535

Only 10 Minutes
 East of Lancaster
1-800-223-KEIM

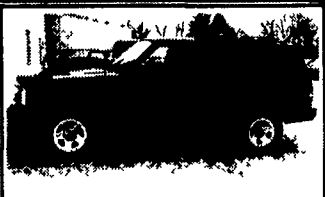
(717) 768-8225
 (800) 223-KEIM
 RT. 30 Lincoln Highway East
 Paradise, PA 17562

KEIM

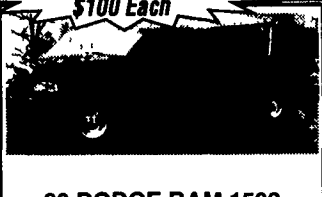
Assorted Truck Caps
\$100 Each



98 CHEVY 1/2 TON
 Reg Cab, 4x4, 8 Cyl., AT, A/C,
 Cruise, Tilt, Cass, 44K Mi.,
 Dk Green



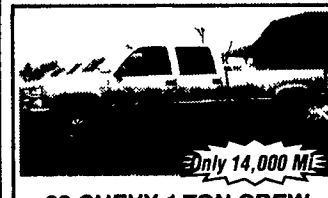
**01 JEEP
 CHEROKEE SPORT**
 4x4, 6 Cyl, AT, A/C, Cruise, Tilt,
 PW, PDL, CD, Dk. Blue



00 DODGE RAM 1500
 Laramie SLT Quad Cab, 4x4, 8
 Cyl, AT, A/C, Cruise, Tilt, PW,
 PDL, Cass/CD, 2 Tone,
 Maroon/Silver



99 GMC SIERRA SLE
 Reg. Cab, 4x4, 8 Cyl., AT, A/C,
 Cruise, Tilt, PW, PDL, CD,
 34K Mi.



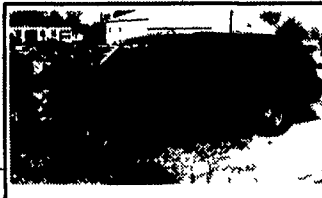
**00 CHEVY 1 TON CREW
 CAB DUALY**
 LS, 2 WD, 8 Cyl., AT, A/C, Cruise,
 Tilt, PW, PDL, P Seat,
 Cass/CD, Pewter



**98 CHEVY 1 TON
 STAKE BODY**
 4x4 8 Cyl, AT, A/C, Cruise, Tilt,
 Cass.



00 CHEVY SUBURBAN
 4 Dr, LS, 4x4, 8 Cyl, AT, A/C,
 Cruise, Tilt, PW, PDL, P Seat, CD,
 Factory Sunroof, Leather,
 Only 25K Mi., Black



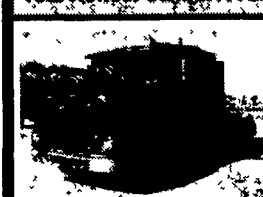
97 CHEVY SUBURBAN
 4 Dr LT, 4x4, 8 Cyl, AT, A/C, Cruise,
 Tilt, PW, PDL, Pseat, Cass/CD,
 Barn Doors, Only 62,000 Mi.

RIVER'S TRUCK CENTER, INC.

2975 Cape Horn Road
 Red Lion, PA 17356

(717) 244-4903

Your Newest Center PA Sterling & Western Star Dealer



Coming Soon
1997 IHC 9300
 Tandem Axle - Cat C-12,
 Air Ride, 42" Sleeper,
 10 Speed



2002 STERLING M7500
 Cat 3126 @ 300 HP, 8L,
 33,000 GVW, 10' Gallon
 Dump, Ready To Go
\$52,900



1996 MITSUBISHI FE
 Diesel, Auto, N/C,
 14,500 GVW, 16' Dryvan
 w/Liftgate
\$12,900



2000 STERLING LT9522
 C-15, 13 Speed, Airride,
 17 1/2 Alum.
 Dump Body