

35

**TRUCKS AND TRAILERS**

'96 Ford XLT Ranger short bed, 4 cyl, 5 spd, PS, PB, air, AM-FM cassette, new radials, 69,000 miles, black, \$4,975. 717-733-2873

1999 Dodge 2500 4x4 dsl, SLT, white w/driftwood, reg cab, extra set tires, 31K mi, never been smoked in, hide a ball in the bed, bedliner, \$23,000 OBO. 304-754-7040.

'98 Dodge 2500 12 pass. van, 318 auto, PS, PB, PW, PDL, cruise, tilt, dual air, AM-FM cassette, red, 52,000 miles, excellent condition, \$11,900. 717-733-2873

'77 Chevy 6500 series, waste water truck, 3000 gal alum tank. 973-377-0875 ask for Carl

1976 IH 4200 10-wheeler w/1985 20' Eby alum. grain body. 1980 Ford 9000 10-wheeler w/18' steel dump & hyd. tail-gate. Both VG cond. \$19,500/ea. 610-286-6356

1988 F600 dsl, auto trans, 20,200 gvw, 16' box, lift gate, 153,000 mi, good running cond., \$2400. Call Dean at WSRM, 717-393-7709 ext. 278

2002 Dodge dually bed, brand new, black, \$1000. 610-823-5792

(2) Dry vans, 45 ft long, towable, for storage, \$1300/ea obo. 717-456-9749

Shure 25 ton drop deck beavertail w/ramps, \$2000 obo. 717-456-9749

'99 Dodge 2500 12-pass., 318 auto, PS, PB, PW, dual air, trailer tow pack., elect. brake setup, green, \$12,500. 610/932-5393

1994 GMC 3500 Sierra Classic, 12' flat bed, new tires, new motor (454) in 1988, 159,726 mi, runs strong, \$2,500 OBO. 610-268-2601.

1990 Ford F250 XLT Lariat, 4x4, new tires, new trans, 1998 AT 71,920 mi, 8' Meyers snow plow, 92,759 mi, \$3,500 OBO. 610-268-2601.

'73 General trailer, 9 ton, tri-axle, elec brakes, 14.5 ft deck w/3.5 ft Beaver-tail, sandblasted, painted, rewired, new lights, lining, magnets, axle pintle eye, \$2500 obo. 717-665-2413

80 Dodge alum. cattle body, 78k miles. 717-865-4650

To be sold on 3/26/02 @ Winding Brook Farm auction, see auction section in paper. '83 350 cattle truck, Eby body, like new, never used for cattle just for furniture, also can be used as produce truck. For info call 215-536-8624

'85 Ford F350 XL dsl cattle truck w/Eby bed, \$8500 neg. 410-374-6931

2000 F250 XLT Lariat, 4dr crew cab, 6' bed, V-10 auto, 4x4, 7000 mi, \$23,500. Walker Truck Sales, 814-893-5589

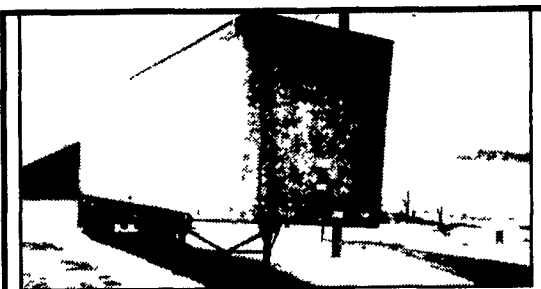
2000 3/4 ton Dodge quad cab, 4WD, short box, 360 auto, 43,000 mi, \$21,000. 607/523-8148

1979 Chevy 16' grain dump. 717/382-4254

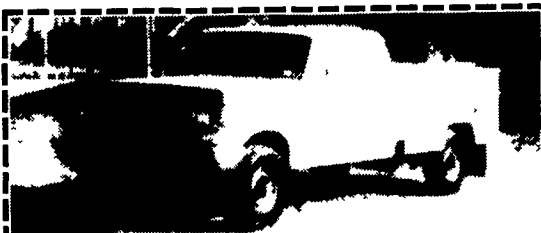
1990 GMC 1500 Suburban 6.2 dsl, 129k, loaded, good condition, \$5200; extra wheels, tires, new condition, for GM, \$425. 610-913-7009

'94 Ford F250 XLT, heavy duty, 5.8 V8, 4WD, manual hub, transfer case, 4.10 rears Limited slip, fully loaded, 5th whl hitch, wiring harness, diamond plate toolbox, dual tanks, extra cooling package, 92k miles. Will MD inspect. \$10,000. 410-399-0214

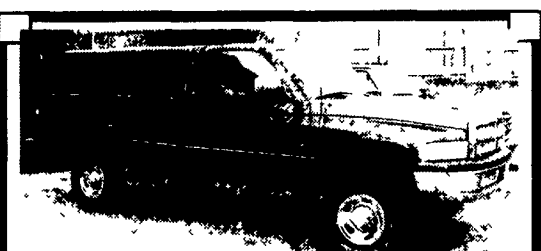
Wanted: 48' drop deck trailer w/spread axle & air. 302-398-8754 after 7pm



1984 Great Dane, 42 Ft Dry Van, Inspected & Road Ready • \$2,500 • (570) 648-0094



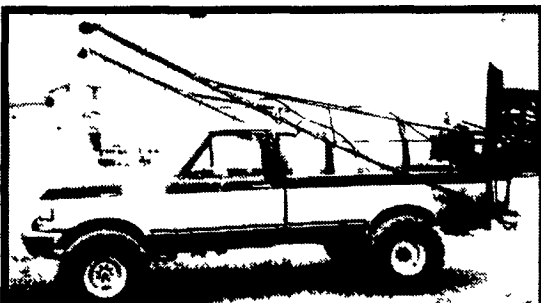
1988 F250 Ext. Cab, Automatic, 4x4, Almost New Tires with Knapheide Body.....\$1,900 717/361-7476



1995 Ram 2500 SLT 4x4, 360, AT, AC, PW, PDL, P. Seat, 70,000 Mi., Dk Green, Very Nice Other Than Scrape On RH Side \$9,500 717-355-0644 Anthony Landis Auto



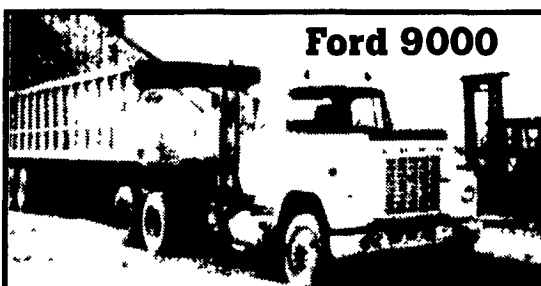
1994 Ford LTL 9000 Tractor Cat 3406 E 410 HP. Fuller 14708 LL Trans. 40,000 Rockwell Rears. Hendrickson Suspension. 204" Wheel Base Dual Function Wet Line. Original Owner-Records Available. 240,000 Miles \$25,500 Call (410) 531-2288 x-626 For Directions



• 1989 Ford F350 460, 5 Speed  
• John Deere 400 gal. Skid Mount Sprayer, 40' Booms Foam Marker, Elec. Ball Valve, Very Good Condition,  
• Will Separate.....\$8,500 OBO  
717-349-2520



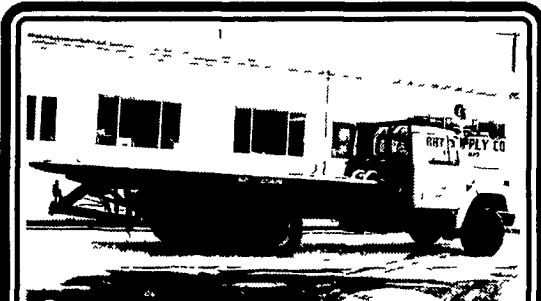
**DUMP TRAILER FOR SALE**  
Owner Retiring From Farming!  
1990 TRAVIS DUMP TRAILER  
34x34 Like New Rollover Tarp, 82 Inch Sides, Center Point Suspension, 3-Way Air Rear Door, Like New Brakes & Drums In past 6 years hauled only approx 50 loads of corn This past year not used - stored inside Trailer in excellent condition  
ASKING \$15,000 • CALL 814-237-0189



**Ford 9000**  
400 Cummins, 13 Speed, Air Ride, Wet Line \$3,900 717/426-4919



1983 Ford F-350 Dump Truck, Completely Redone, Rblt. 351-W V8, 4-speed, cold A/C, Power Angle Plow, Custom Exhaust, etc... Runs, works and looks super! \$6,500. Double-D-Auto Sales 717-774-5590 York Country



1983 International T/A S-Model Steel Rollback  
Jerr-Dan 22' w/Ramsey Winch, DT466 210 HP, 10 Speed Trans., Hendricksen Suspension, Runs Good .....\$9,500 or Best Offer!  
Curry Supply Co., Curryville, PA 1-800-345-2829



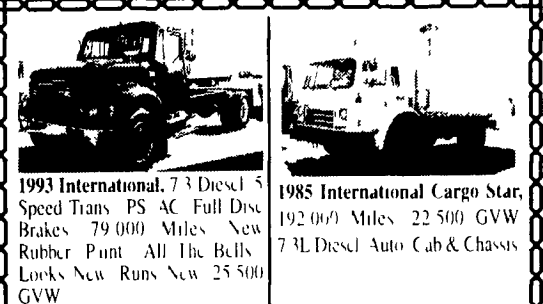
**RENT ME!**  
**Landoll Trailer**  
Unit Has Travelling Axle/Lift Cylinder, On-Board Hydraulic Power Unit, 20,000 Lb. Winch, Air Ride, \$119/Day  
Four Way Fleet and Rental LLC 717-354-3199 New Holland, PA



**Precision Engine Machining Rebuilding**  
• Engine Removal/Installation Availability  
• Engine Disassembly/Assembly Availability  
• Quick Service on Flywheel Resurfacing  
• Complete Block Reconditioning - up to 98 x15 bore  
• Complete Head Reconditioning  
• Complete Rod Reconditioning  
• Complete Crank Reconditioning  
• Balancing (Crank, Rods, Flywheel Etc.)  
• Straightening & Welding of All Types of Steel Shafts and Cranks (to 90°)  
• Cast Iron Crack repair  
• Large Mill - Large Lathe - 60 Ton Press  
• Rollback PU/Delivery Service Availability  
Case - Farmall - JD - Ford - Perkins - Kubota - Deutz - Isuzu - International - Kohler - Caterpillar - Detroit - Komatsu - Mack - Cummins - Iveco - Agco - Oliver - Ag - Industrial



**Rutt's Machine Shop, Inc.**  
300 Jonlyn Drive Elizabethtown PA 17022  
Call (717) 367-3011



1993 International, 73 Diesel 5 Speed Trans. PS AC Full Disc Brakes 79,000 Miles New Rubber Paint All The Bells Looks New Runs New 25,500 GVW



1985 International Cargo Star, 192,000 Miles 22,500 GVW 7.3L Diesel Auto Cab & Chassis

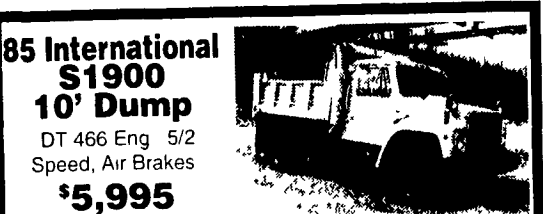


1993 International 4900, 24 Van w/Lift Gate DT 466 Diesel 210 HP 5 Speed Hyd Brakes Under CDI 284,000 Miles

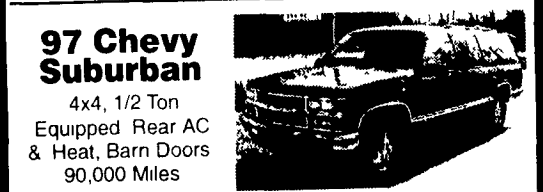


1994 International, Cab & Chassis DT 466 210 HP Eng 6 speed Trans AC PS Full Air Brakes Looks new & Runs New! 33,000 GVW

Phone 717-664-1696  
**CHARTER ENTERPRISES, LTD.**  
270 Hostetter Road, Manheim, PA



85 International \$1900 10' Dump DT 466 Eng 5/2 Speed, Air Brakes \$5,995

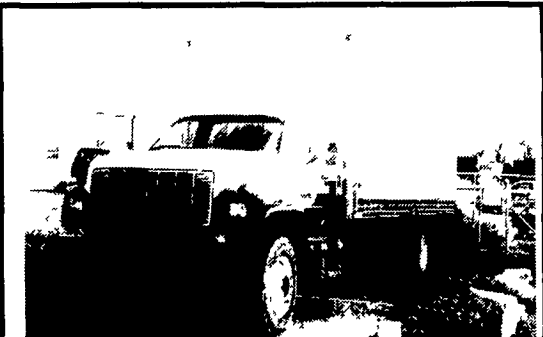


97 Chevy Suburban 4x4, 1/2 Ton Equipped Rear AC & Heat, Barn Doors 90,000 Miles



91 Ford F450 Super Duty Bucket Truck Diesel Auto, PS, PB 60,000 Miles \$7,495

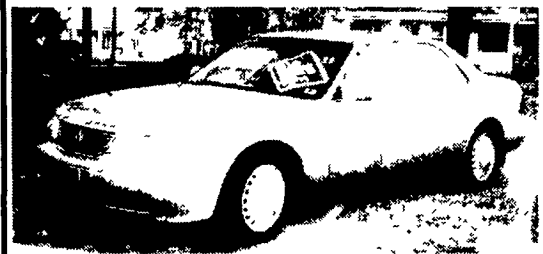
**STROBECK'S AUTO SALES**  
262 W. George St. Yoe, PA 717-244-4282



1994 G.M.C. 33,000 GVW, Cat Diesel, 215 HP, AC, Auto, 230 Kilo, 22' Closed Box Truck Reduced \$13,400.00



1988 Chevy Truck 33,000 GVW, 136K Diesel, 210 H.P., 6 Sp., Runs Like New • Reduced \$14,400.00



1997 Accura, 90K, Runs Like New REDUCED \$12,900

Now Available **SOO®** All Purpose Truck Bodies and Hoists Made To Your Specifications. Also Truck Fabricating & Welding. Call For Quote  
**F.M.I. Feedmobile, Inc.**  
717-626-2680