

Mobile home material recovery facility, windows, doors, axles, tires, appliances, etc. 5x10" steel beams, \$1/ft; 500 lb bales fiberglass insulation, \$50. Leave message for Pequea Salvage, 717-464-4461.

Treated poles & odd size planks & treated timbers. 570-398-2688

Custom lumber drying in our 20,000BF kiln. Leave message for Pequea Salvage, 717-464-4461.

FLOORING, wide plank, kiln dried, T&G, Ash, Oak, Maple, Walnut, Cherry. Starting \$2.75/sq.ft. BARN WOOD FURNITURE ready made or made to order. 610-565-6038 www.old-wood.com

BARN FLOORING; new, kiln dried, T&G, Y-pine 2x8's for floors and stalls. Noah Shirk Sawmill, 717-354-0192.

Wanted: Old barns, houses, log houses. Will dismantle & remove. The Barn Farm 215/766-0564

Timberline POLE BUILDINGS

- Horse Barns & Arenas
- Mini Storage Buildings
- Machinery Storage • Garages
- Livestock Confinement
- Commercial Buildings

Producers of Quality Buildings for over 30 years

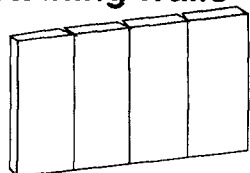
Many sizes & options available

Free Estimates
800/842-0276

CONESTOGA POURED WALLS

Formerly Aaron Fisher

- NRCS Approved Manure Storage Pits
- Foundation Walls, Retaining Walls



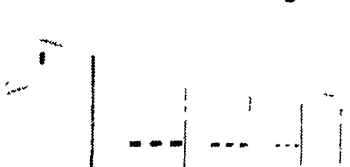
133 Maxwell Hill Road
Morgantown, PA 19543

610-286-9217
Leave Message

UNLIMITED STRUCTURES INC.

800-858-7297

POLE BUILDINGS
Horse Barns • Riding Arena
Equipment Storage
Garages
Commercial Buildings



3-Steel Bldgs.

24x30 was \$6,800, sell \$3,200
40x52 was \$13,900, sell \$5,900
50x200 was \$45,900, sell \$25,900
Best Offer! Can Deliver! Tom
(800) 392-7806

Carpentry & Masonry Work

- Garages
- Pole Barns
- Horse Barns
- Additions
- Timber Frame Structures
- Roofing Metal, Shingles, Cedar

BEILER'S GENERAL CONSTRUCTION
717-786-8293

Fully Insured

Call us for a price!

"We specialize in agriculture & residential repairs & construction"

Serving Lancaster, York, Chester & Lebanon Counties, & Northern Maryland

We Specialize In Agriculture Building

717-442-8399

Dairy Facilities
Renovations - Additions
Pole Barns
Concrete Work - Reroofing
Horse Barns

White Horse Construction Inc.
Parkesburg, Pa.
(call Chris or Sim)

GLENWOOD METALS LLC

CUSTOM CUT METAL ROOFING & SIDING

Galvanize & Galvalume

- 29 gauge - 15 colors painted
- 26 gauge commercial
- 29 gauge stainless steel
- 024 Aluminum

Standing Seam Roofing

- 12 colors painted & galvalume

Trims - Screws - Nails

- To match colors

265 E. Meadow Valley Rd.
Lititz, PA 17543

VISA 717-626-9674
MasterCard 717-733-7160
Discover 800-582-9956
MAC

Light Up Your Home With A Tubular Skylight

See us at the Senior Expo Ephrata Rec Center May 22

Natural Light

- Bright, pure, healthy light
- Little or no heat gain or loss
- Fits all roof types
- 10", 13", 18" equals up to 1,000 watts of light
- 25 year warranty

Have us install or ask for the Do-It-Yourself Kit.

MILLWAY HOME IMPROVEMENTS LLC

265 E Meadow Valley Rd., Lititz, PA 17543
717-733-7160 • 717-627-6886
1-800-247-2107

VISA Financing Available MasterCard MAC

- **40x60x12**
 - 1 12' w x 12' h sliding door
 - 1 10' w x 10' h garage door
 - 13' entry door

\$15,900
 - **40x80x12**
 - 1 12' w x 12' h sliding door
 - 1 10' w x 10' h garage door
 - 13' entry door

\$20,900
 - **50x96x14**
 - 1 14' w x 14' h sliding door
 - 1 12' w x 12' h garage door
 - 13' entry door

\$27,900
- 40# per sq ft snow load on trusses
- Financing Available
- Call for free literature or see us at www.pioneerpolebuildings.com



- ### Stock Buildings
- **24x24x8**
 - 1-16' w x 7' h insulated garage door
 - 1-3' entry door

\$5,250
 - **24x40x10**
 - 2-9' w x 8' h garage doors
 - 1-3' entry door

\$7,900
 - **30x32x10**
 - 2-9' w x 8' h garage doors
 - 1-3' entry door

\$7,900
 - **30x40x10**
 - 2-9' w x 8' h garage doors
 - 1-3' entry door

\$8,900
 - **30x64x10**
 - 1-10' w x 10' h sliding door
 - 1-3' entry door

\$12,900

Prices include tax, delivery, materials, and labor for construction.

MEMBER
PBA **NEBA**
NATIONAL FRAME BUILDERS ASSOCIATION

Pioneer Pole Buildings, Inc.

716 South Rt. 183, Schuylkill Haven, PA 17972
Toll Free 1-888-448-2505 Fax 1-888-448-2515
www.pioneerpolebuildings.com

- 30 year warranty Everlast painted steel (your choice of color on roof, sides, trim).
- Steel is G 100 painted and heat roll formed by Everlast Inc the best known roofing made