

1A CONSTRUCTION EQUIPMENT

Sales Service **JERRE MARTIN REPAIR** **Rental Repairs**
 391 N. Farmersville Rd., Ephrata, PA 17522
 (Just minutes off RT 222)
717-859-3283 Toll Free 877-317-5348

Road Service Available Now **Financing Available**
Custom Repairs On All Makes Construction Equipment
WE ARE BUYERS FOR LATE MODEL CONSTRUCTION EQUIPMENT NEEDING REPAIRS



99 Cat 416C, 4x4 E-Hoe **\$33,000** Cat 226 **\$16,000** 95 Cat 315C **\$48,000**



94 Cat 320 **\$43,000** JD 544B Good Condition **\$14,000** '86 Cat 963 crawler loader, OROPS **\$38,000**

Case 580K Backhoe Dis.....	\$7,000	'95 JD 450G w/6-Way Blade.....	\$26,000
Case 585E, 21 Ft. 4x4.....	\$17,000	JD 544B.....	CALL
Case 1840 Rebuilt Hydro.....	\$9,000	'90 JD 555G.....	\$23,000
'93 Cat D5C w/6-way blade.....	\$32,000	'90 JD 455G.....	\$24,000
'90 Cat D6H, straight blade w/tilt, diff steer.....	\$55,000	'98 JD 455G Crawler Loader.....	\$28,500
Cat E110B excavator.....	\$20,000	JD 644C JRB Coupler.....	\$21,000
'88 Cat IT28B bkt & forks.....	\$35,000	'88 JD 755B.....	\$25,000
'95 Cat 939, good cond.....	\$34,000	JD 860A Scraper, Rebuilt Motor, Lots of New Parts.....	\$14,000
'81 Cat 943.....	\$27,000	Gehl 663 telescopic forklift, 6000 lb, 37 ft lift.....	\$26,000
Cat 951C Crawler Loader, Rebuilt Motor New U/C.....	\$18,000	Avail.: Rebuilt exchange motor for Cat 953.....	\$5,000/Exch.
'81 Cat 953 Crawler Loader, Good U/C.....	\$29,000	'87 7038 Sky Track high lift.....	\$25,000
'81 Cat 953 LGP OROPS.....	\$28,000	'79 Lull 844, extend-a-boom w/gas engine.....	\$16,000
Cat 955K crawler loader, 70% S.A.L.T. U/C.....	\$16,500	Bomag 212D, 84" smooth drum, dirt compactor, dirt roller.....	\$20,000
Cat 955L Crawler Loader.....	\$18,000	'91 Dresser TD7G.....	\$16,500
'94 Cat 963.....	\$55,000		
'88 Cat 963 crawler loader, OROPS.....	\$38,000		
'96 Cat 963B, 10,000 Hrs.....	\$80,000		

Case 584 Construction King forklift w/forks & man lift platform, \$8500; Selma scissors lift, 6'x13' platform, \$4500; Case 1830 skid loader w/forks & bucket, \$5000. 717-545-9120

000000000000000000000000
 000000000000000000000000
 New dozer rake, \$1,550, Used excavator rake \$2,400 BO 888-726-7863
 000000000000000000000000
 000000000000000000000000

Mano H6000 Forklift,

 28 ft. mast, 6000 lb. lift, tires 80%, **\$8,250**
856-769-0787

100% Financing w/Good Credit at 8% or less Int. in PA



1994 JD 310D Tractor Loader Backhoe, 4x4, Cab, Ext. Hoe, Nice **\$26,500** Cat 307 SSR Track Hoe w/Rubber Tracks & Blade **\$23,500**



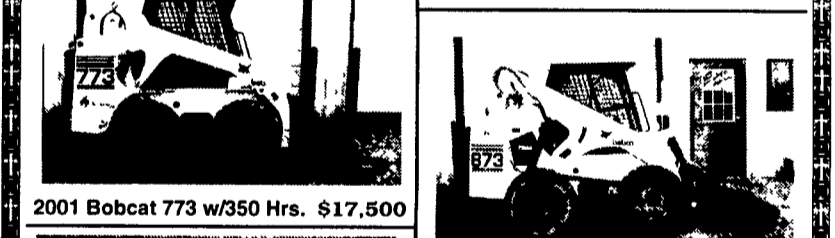
84" Root Grapple, New **\$2,200** NH XL865 Turbo Skid Steer w/Rear Weights, New Tires, 1600 Hrs. **\$14,500**



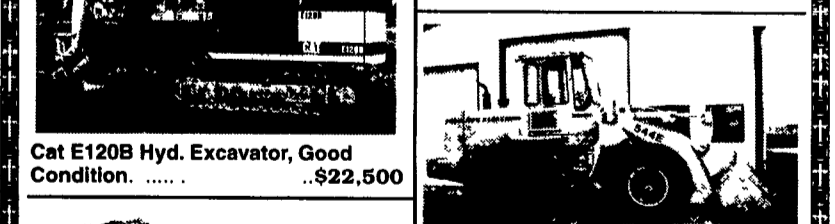
1997 Gehl Skid Loader, Model 5635, 14" Rubber, 900 Hrs. **\$13,500** 1986 Cat 953, Good bottom, LGP, with Root Rake **\$37,000**



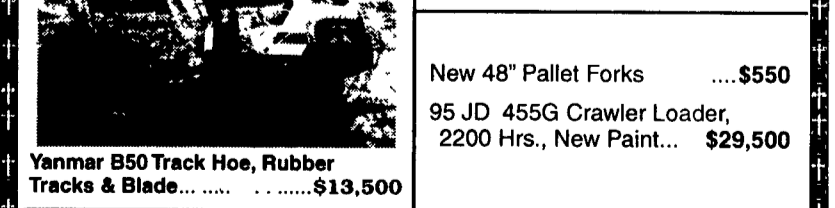
90 JD 744E Wheel Loader, New Paint, Runs Nice **\$44,000** ~~\$46,000~~ JCB 215S TLB, Cab, Air, Pallet Forks on Bucket, 3400 Hrs. **\$29,500**



2001 Bobcat 773 w/350 Hrs. **\$17,500** 97 Bobcat 873 w/197 Hrs. **\$17,500** Also Tracks Available **\$1,500**

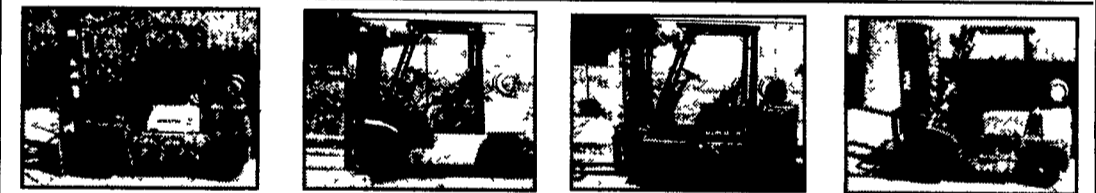


Cat E120B Hyd. Excavator, Good Condition. **\$22,500** JD 544E, 1990, 7200 Hrs **\$32,000**

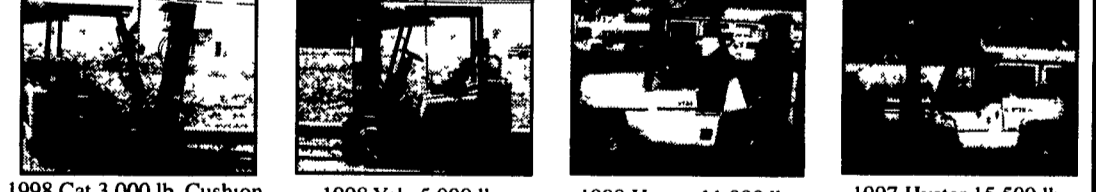


Yanmar B50 Track Hoe, Rubber Tracks & Blade..... **\$13,500** New 48" Pallet Forks **\$550** 95 JD 455G Crawler Loader, 2200 Hrs., New Paint... **\$29,500**

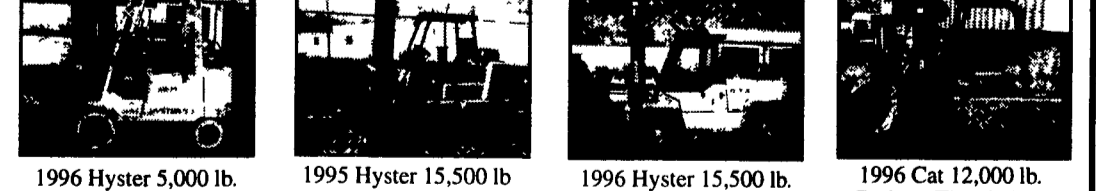
PA INDUSTRIAL EQUIPMENT, INC.
PNEUMATIC TIRE FORKLIFTS



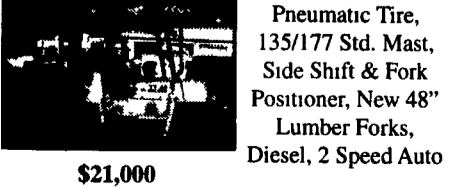
1989 Komatsu 5,000 lb Pneumatic Tire, Totally Rebuilt, LP, Std. Trans., 85/130 Mast, Side Shift **\$10,900**
 1997 Komatsu 6,000 lb Pneumatic Tire, Solid Tires, 78/169 Triple, LP, Std Trans, 2300 Hrs **\$12,400**
 1996 Cat 6,000 lb. Cushion Tire, 83/187 Triple, Side Shift, LP, Auto Trans. **\$6,850**
 1997 Tailift 4,000 lb Pneumatic Tire, 85/130 Std Mast, LP, Auto Trans, Low Hrs. **\$9,200**



1998 Cat 3,000 lb. Cushion Tire, 83/188 Triple, LP, Auto Trans., Nice, Low Hours **\$6,750**
 1998 Yale 5,000 lb. Cushion Tire, 83/189 Triple, Side Shift, LP, Auto Trans, 5000 Hrs **\$8,400**
 1998 Hyster 11,000 lb Pneumatic Tire, 88/111 Std Mast, Diesel, Auto Trans, 3500 hrs **\$14,900**
 1997 Hyster 15,500 lb Pneumatic Tire, 126/173 Std Mast, 54" Forks, Solid Tires, Cab, 2 Speed Auto, Diesel • **\$23,500**



1996 Hyster 5,000 lb. Cushion Tire, 83/189 Triple, Side Shift, LP, Auto Trans. **\$3,900**
 1995 Hyster 15,500 lb Cushion Tire, 106/134 Std. Mast, 60" Forks, LP, Auto Trans. • **\$19,500**
 1996 Hyster 15,500 lb. Pneumatic Tire, 106/134 Std. Mast, 72" Forks, Diesel, 2 Speed Auto, Cab, 2 Units • **\$14,900 ea.**
 1996 Cat 12,000 lb. Cushion Tire, 91/181 Triple, LP, Auto Trans., Cascade 60" Paper Roll Clamp, Nice, 5200 Hours **\$10,900**



1994 TCM 15,000 lb. Pneumatic Tire, 135/177 Std. Mast, Side Shift & Fork Positioner, New 48" Lumber Forks, Diesel, 2 Speed Auto **\$21,000**

(610) 369-9778
Fax (610) 369-9858
Roy • Gus
Lease Rates Available

AA Equipment
717/529-2512
 No Sunday Calls
1797 Robert Fulton Hwy., Quarryville, PA 17566
• We Buy & Sell • Financing Available