

PUBLIC AUCTION
of 107.6 ACRE FARM
FRIDAY, APRIL 5th at 11 AM

We Are Pleased To Offer At Public Auction

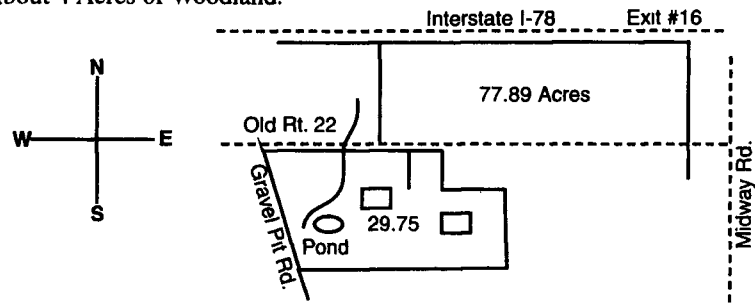


This Fine Berks County Farm.

LOCATION: 9024 Old 22 Bethel, Pa. Berks Co. From The Village of Bethel. Take Old 22 East for 2 Miles to Property. Exit #16 of I-78, Known as Exit #5, Take Midway Rd. South 1/2 Mile To Old 22. Turn Right & Go 1 Mile To Sale. For More Info. Call Auctioneer Dwight Miller (717) 933-5736.

Terms: 10% Down Day Of Sale, Balance Within 60 Days.

Property Lies On Both Sides of Rt. 22. About 78 Acres Is On The North Side of Rt. 22 & I-78 Interstate. About 29 Acres Lies on The South Side Of Rt. 22 Along With A Bank Barn, Lg. 2 1/2 Story Stone Farm House With 12 Large Rooms. Also A Lg. Summer House Turned Into Living Quarters. Property Has a Pond & Creek. Property Has Road Frontage From 3 Different Roads. This Property Has Great Potential As A Farm Or Industrial Commercial Use. Land is Mostly Flat. Property Is Zoned Industrial/Commercial. Property Has About 4 Acres of Woodland.



Auctioneer: Dwight D. Miller AU002414-L
Bethel, PA 19507
(717) 933-5736

Sale For
MR. J.P. MONK
Atty. Koch & Koch of Reading, PA.

PUBLIC AUCTION
REAL ESTATE - FARM
MACHINERY - LIVESTOCK
FRI., MARCH 22, 2002
AT 10:00 A.M.

Located In Milroy Co., 2 1/2 Miles East Of Milroy, PA., Along Siglerville Pike Road
REAL ESTATE AT 12:00 NOON

35 acres open tillable land, fronting along Siglerville Road. Land is under cultivation w/development future, and current survey. For inspection, contact owners! **TERMS - \$20,000.00 DOWN, BALANCE UPON FINAL SETTLEMENT WITHIN 30 DAYS. RESERVE THE RIGHT TO REJECT ANY BIDS.**

17 HEAD LIVESTOCK

7 Hereford cows due for spring, 2 yrs. old polled Hereford bull, black W.F. service age bull, 3 reg. Jersey milk cows, 2 Jersey bull calves, 2 reg. Ayrshire milk cows and Dutch Belt heifer due in March.

FARM MACHINERY

J.D. 2940 dsl. tractor good cond. run 2680 hrs. w/dual hyds., N.H. 155 single beater spreader (good), N.I. 325-nr corn picker, J.D. 1240-4rn planter, J.D. 336 baler w/thrower (good), N.H. 256 rake, King Wyse 32 ft. elevator w/table drag, 3 bale rack wagons, McCurdy gravity bin wagon, Case 3-16 in. 3 pt. auto reset plow, J.D. 10 ft. transport disk, 10 ft. cultipacker, M.F. tooth chisel plow, 10 ft. 3 pt. harrow, Cornell 5 pt. log splitter, 9 in. hammer mill.

NO SMALL ITEMS, MACHINERY WILL SELL EARLY!

FEED AND DAIRY ITEMS

2 VanDale silo unloaders 10 and 16 ft. (like new), G.S.I. 2 ton metal feed bin, approx. 1000 bales good mixed hay, some straw will be sold by the mow and new outdoor job johnny.

Terms - CASH OR APPROVED CHECK

Food stand

JOHN AND MELVA WORLEY
717-667-2518 or 667-9641

Mark Glick - Auctioneer - AU-349-L

Public Auction Register

Closing Date Monday 5:00 P.M.
of each week's publication

Internet Sale Register will be updated
by Friday at 12 Noon

ATTENTION AUCTIONEERS

All sales register info needs complete address,
street, town, county & state.

SAT APR 20 - Beaver Run Amish Parochial School spring consignment sale At school 1 mile N of Rt 54 between Washingtonville and Turbotville John Hosea, 437-3083

SAT APR 20 - Wickard Bros Annual Consignment Sale of Farm Machinery Carlisle PA Kevin M Wickard Auct

SAT APR 20 - 9AM Real estate 1756 Kirkwood Pike, Kirkwood Pa For Erma Cramer Whyte's Auctions AU-2608L 717-786-7666

SAT APR 20 - 9AM Selling Real Estate, antiques & collectibles at Water St., Selinsgrove, Pa Hassinger & Courtney Auctions 570-539-8791

SAT APR 20 - 9AM Real estate along Rt 25 one mile E of Gratz in Dauphin Co Pa Antiques, household, lawn tractors, misc tools Luma M Rothemel, owner Scott A Klouser AU-003159-L 717-362-9688

SAT APR 20 9AM 122 Acre farm, tractors, farm machinery, butcher equip, antiques & personal property At 607 Richmond Rd., Wrightsville, Pa Gilbert & Gilbert Auctions #336, #2256 717-252-3591

SAT APR 20 - 9AM Real estate, antiques, household goods, tractors and tools 25 miles NW of Carlisle, Pa or 4 miles E of Blaine Pa Estate of Earnestine E

Robinson Ed Shull Auct #1935 L 789-4100

SAT APR 20 - 9AM Real estate farm/lawn/shop equipment household goods for Larry & Ada Rudy at 482 White Oak Road Strasburg, Lanc Co Pa By Randall Ranck w/Robert Martin & Sons #3117 717-295-3594

SAT APR 20 - 9AM Real estate, antiques, household goods, farm/lawn/shop equip and tools at 482 White Oak Rd., Strasburg Twp, Lanc Co., Pa By Harry H & Ada Rudy Randall L Ranch 717-295-5394 AU-003117-L

SAT APR 20 - 9AM Spring Consignment Auction of Farm Equip 12 miles N of Lewistown, Pa Mifflin Co along Rt 522 at village of Wagner Tractors & equip, implements, trucks, cars, lumber, misc parts & items Blaine Rentzel 7 Assoc #761

SAT APR 20 - 9AM Real estate, antiques, collectibles, toys, glass, furniture of Nine Points, Bart Twp, Christiana, Pa By Phyllis G Linton Estate Probst Family Auct AU-001856-L 717-464-3700

SAT APR 20 - 9AM Spring consignment auction, farm equip & misc items 522 at Village of Wagner, 12 miles N of Lewistown, Pa. Mifflin Co For consignment call Ivan Macknair 717-543-5192

PUBLIC AUCTION

19 ACRES OPEN & WOODLAND
IN HELLAM TOWNSHIP,
YORK CO. OVERLOOKING
THE SUSQUEHANNA RIVER
& LANCASTER CO.

MON., APRIL 8, 2002
6:00 PM

6171 VISTA LANE, WRIGHTSVILLE, PA
(Off Rt. 30 At Wrightsville Exit, Turn South Go Straight onto Cool Creek Road To Top Of Hill, Turn Right On Mt. Pisgah Road To Strckler School Road Right & Immediately Left On Vista Lane To Overbrook Lane, Watch For Signs)

19 ACRE PARCEL

19 Acres Of Open & Wooded With No Improvements, Zoned Rural Conservation in Hellam Township, York Co., PA - Tax Map 31-KL-47.

Terms: 10% Down, Balance Due In 45 Days

For Maps Phone 717-764-6412

SELLER: JOSEPH A. ALMONEY JR.
KAREN L. ALMONEY

Rentzel's Auction Service
Emigsville, Pa 717-764-6412
Blaine Rentzel AU 761-L
Dave Conley AU 3269-L

ABSOLUTE
PUBLIC AUCTION

2-1/2 STY. 5 BDRM. DWL.
2 ACRES ZONED VC
PERSONAL PROPERTY
ANTIQUES

SAT. MARCH 23, 2002
9 AM - 1 PM REAL ESTATE

Location 286 W Main St., Reinholds, PA Rt 897 North thru Reinholds to property on right W. Cocalico Twp., Lancaster County



Real Estate consists of 2 1/2 story frame house with country kitchen, 1st floor laundry & 1/2 bath, living & family rms, 5 bdrms & full bath, full attic & bsmt storage Propane gas hot water heat system. Detached 2 sty frame barn & garage All On 2 Acres Land. Public water & sewer over 385' road frontage Zoned VC (Village Center District) Great subdivision potential. Terms 10% down balance 60 days Inspection by appt or open house on Sat's March 2, 9 & 16 from 1-4 PM for land plotting, brochure & financing call Auctioneers at 717-445-4309 or 717-733-1006

PERSONAL PROPERTY

Old victrola case, china cabinet, Singer sewing mach w/ chair, single beds & bedding, grained blanket chest, side chairs, wooden book case, oak chest of drawers, kneehole desk, nite stand, plant stand, book shelf with mirror, 3 air conditioners, metal wardrobe, modern sofa & chair, wooden folding chairs, wooden high chair, GE microwave, swivel rocker, Warm Morning gas heater, GE gas stove, GE washing mach, elec roaster on stand, metal cupboard, modern recliner, floor fans, hassock fan, clothes trees, drying rack, old trunk, Hoover tank sweeper, potty chair, walker, throw rugs afghans - blankets - stuffed animals, flatware, corn dryer, shoe button hooks, Corelle dinner set, sm kitchen appliances, old eye glasses, old walking canes, wall mirror, material, old games, dolls, old calendars, table lamps, kero lamps, snack trays, green canning jars & others, picture frames, peanut butter tumblers, water set, picnic table, child's sleds, clothes hamper, step ladders, wheelbarrow, hardware, sm wood lathe, wooden crates, metal tool boxes, wooden ladders, garden tools, express wagon, snow blower as is, cast iron water pump, grinder on bench, twin wash tubs, straw knife, tomato cages, bicycle rack, guns 22 bolt S S rifle, S S 12 ga shotgun, Rem 12 ga pump shotgun NOTE Auction to begin w/sm items followed by furniture Food stand Terms are cash or PA check

Terms By

RAYMOND R. & ELSIE H. GOOD

717-859-2671

Mike Kane, Attorney

Auction Conducted By:
Randal V. Kline, Roy E. Good, Jr.,
Keith Snyder, Auctioneers
(717) 445-4309
Lic. #499L - #2116L - #3433



PUBLIC AUCTION
SAT., MARCH 30, 2002 9:00 AM
ANTIQUES, EQUIPMENT & WATERCRAFTS,
COAT-GRADE SHEEPSKINS & SEWING MACHINES
AND HOUSEHOLD GOODS

Location: 671 Overlys Grove Rd., New Holland, Pa (Lancaster Co.)
Directions: Pa. Rt. 23 to New Holland Borough, turn onto South Kinzer Ave and travel for 2 mi., bear left onto Overlys Grove Rd. and go .5 mile to auction on left.

Antiques

Original 1855 "The Three Earls Township" Wall Map (3'x5'); Hand-turned Forge from the Greenbank Blacksmith Shop; Stauffer Courting Buggy; Assorted Quilts; George & Martha Washington Tapestry and more...

Equipment & Watercrafts

2-1996 Kawasaki 750 STS 3-seater personal watercraft (Running Condition); 1995 Kawasaki 650 TS (Tandem Sport) 2-seater personal watercraft (Running Condition); 1995 Yamaha VXR 650 personal watercraft (Running Condition); 48' West Wind Gooseneck Trailer (20,000 lb gw); International 4WD HD Truck Body Frame w/20" Tires; 7,000 lb. Clark Tow motor w/rebuilt engine & new tires; 1975 Kawasaki 175cc Motorcycle (Good Condition); 16' Enclosed Truck Bed Storage Trailer; 1600 lb. Tuck-under Tailgate Lift; Wheel Horse Sickle Bar Mower; Snow Plow w/Attachment; 6' Stone Rake; 5' Scraper Blade; Hydraulic Cylinder Bench; Misc. Hydraulic Pumps, Motors, Fittings and Lift and much more...

Coat-Grade Sheepskins & Sewing Machines

75 Coat Grade Sheepskins; Assorted Leathers, Buckskins and Deer Hides; Singer HD Double-Needle Upholstery Sewing Machine; Conseq Single-Needle w/Reverse Sewing Machine; Singer Glove Making Machine; Phaff Sewing Machine; Foot-Operated Rivet Machine; Sewing Machine Thread; 1963 J.R. Bauman Size 40 Norman Model; Canvas Sewing Factory Hampers on Rollers and more...

Household Goods

Large Walnut Wardrobe / Gun Cabinet; Black Stone Wringer Washer; Twin Rinse Tub; Microwave Ovens; Library Tables; Metal Desks; Secretaries Desk & Hutch; Wooden Desk; Small Children's Wooden Rockers; Assorted New Tupperware; Avon Collection; Toys: Flexible Flyer Rail Sled; Smith-Miller Truck & Tanker; Tonka Trucks & Toys; Buddy-L Trucks; Structo Trucks; Tru-Scale Trucks; Halco Toy Cap Guns and much more...

TERMS BY: DON AND HETTIE FINNEY, OWNERS

Cash or Honorable Pa. Check Only
All Announcements Sale Day Take Precedence Over All Advertising
Not Responsible for Accidents
Food on Premises by Blue Ball Fire Co.

Sale Order:
9:00 AM - Antiques and Household Goods
11:00 AM - Coat-Grade Sheepskins & Sewing Machines
12:00 PM - Antique Map, Watercrafts & Large Equip.
visit www.auction.net for more info.



Alan Diffenbach Auct. - AU2258L

100 W. Jackson St., Box 186,

New Holland, PA 17557

Office: 717-355-7253

Fax 717-355-9547

MACHINERY SALE

The 27th annual consignment sale for farm machinery etc. will be held at the Westminster livestock auction grounds. Located along state Rt. 31 between New Windsor and Westminster MD on

SAT., MARCH 23, 2002
AT 9:00 A.M.

J.D. 4030 tractor, 250 hrs. on new motor excellent condition. J.D. grain drill (good), 3, 16 ft. pipe hay wagons, 14 ft. Brillin harrow, I.H. 10 ft. disc harrow, brand new TONUTTI hay tedder model GT 500, New J.D. #64 hay rake, N.I. 5209 disc bine (good). N.H. 880 2 row chopper, 2, M.F. unloading wagons, Gehl #99 twin blower, 853 I.H. chopper with corn & pickup head. Grove silage wagon, Mc D PTO manure spreader, and all kinds of farm machinery and lawn and garden equipment found at a consignment sale Large amount of new tools.

TERMS: Cash on day of sale or approved check with proper ID.

NOT RESPONSIBLE FOR ACCIDENTS.

NOTE: Come early and register to buy. Machinery will be sold at 12:00 noon. Let us sell your used farm equipment.

Robert L. Hooper Auction Service
301-473-4138

Breakfast and lunch available.