

Belleville Poultry

Belleville, Pa.
 Report Supplied by Auction
 Wednesday, March 13, 2002
 GFFSF NONE.
 TURKYS 25.00 FA
 GUINFAS: 8.00 FA
 ROOSTERS: 3.50-6.50 FA.
 BANTAMS 1.50-4.00 FA.
 HEAVY HENS: 3.00-4.00 FA.
 SILKIES: 2.75 FA
 MUSCOVY HENS 3.50 FA
 MUSCOVY DRAKES 12.00 FA.
 MIXED DUCKS 4.00 FA.
 BARN PIGFONS 3.00 FA
 WHITE BIRDS: NONE.
 FANCY BIRDS NONE.
 PEACOCKS NONE.
 PHASANTS 10.50.
 DOVES NONE.
 QUAIL 1.75-2.50 FA.
 GUINEA PIGS: NONE.
 RABBITS BUNNIES 1.50-10.00.
 RABBITS 4-6 LBS. 4.00-6.00. OVER 6
 LBS. 5.50-12.00. FAMILY 10.00-30.00.

**Northeast Broiler
 Fryer Parts
 Part I**

ATLANTA, GA.
 March 13, 2002

Report Supplied By USDA

Trucklot buying activity was very light during midweek trading as dealers noted very little incentive to extend floorstocks beyond most immediate needs. Offerings of breast items were at least adequate and were often increasing in availability. Wings were fully adequate. Dark meat cuts, in particular legs and leg quarters, were ample and building. Movement through retail and distributive channels was light and the scattered feature activity usually highlighted the more seasonal items rather than poultry. The market tone was no better than steady on breast items, cautiously steady on wings and barely steady to weak on legs and leg quarters.

ICE PACKED BROILER/FRYER PARTS, DELIVERED TO FIRST RECEIVERS IN POOL TRUCKLOT AND TRUCKLOT QUANTITIES, CENTS PER POUND. ITEM CURRENT NEGOTIATED TRADING BREAST - B/S 130 TENDERLOINS 125 BREAST - WITH RIBS 65-66 BREAST - LINE RUN 65 LEGS 35-36 LEG QUARTERS (BULK) 19-20 DRUMSTICKS 38-39 THIGHS 28-29 B/S THIGHS 85-86 WINGS (WHOLE) 67-68 BACKS AND NECKS (STRIPPED) 10-12 LIVERS (5 POUND TUBS) 25-30 GIZZARDS (HFARTS) 40-45

INCLUDES NEW YORK CITY METROPOLITAN AREA, NORTHERN NEW JERSEY, MASSACHUSETTS, CONNECTICUT, RHODE ISLAND, AND PENNSYLVANIA (NORTHEAST OF HARRISBURG).

**Northeast Broiler
 Fryer Parts
 Part II**

ATLANTA, GA.
 March 13, 2002

Report Supplied By USDA

ICE PACKED BROILER/FRYER PARTS, DELIVERED TO FIRST RECEIVERS IN POOL TRUCKLOT AND TRUCKLOT QUANTITIES, CENTS PER POUND

CURRENT NEGOTIATED WITH VOLUME ITEM TRADING AVG./LBS.

BREAST - B/S 130 130.08 374.480
 TENDERLOINS 125 125.24 103.680
 BREAST - WITH RIBS 65-66 72.25 169.480
 BREAST - LINE RUN 65 68.19 142.480
 LEGS 35-36 38.55 176.520
 LEG QUARTERS (BULK) 19-20 20.81 331.525
 DRUMSTICKS 38-39 38.31 84.030
 THIGHS 28-29 34.39 70.840
 B/S THIGHS 85-86 83.67 76.640
 WINGS (WHOLE) 67-68 75.03 261.280
 BACKS AND NECKS (STRIPPED) 10-12 11.86 46.400
 LIVERS (5 POUND TUBS) 25-30

20 37 7.160 GIZZARDS (HFARTS) 40-45 37 47 20.280

INCLUDES NEW YORK CITY METROPOLITAN AREA, NORTHERN NEW JERSEY, MASSACHUSETTS, CONNECTICUT, RHODE ISLAND, AND PENNSYLVANIA (NORTHEAST OF HARRISBURG)

**National Egg Market
 At A Glance**

Atlanta, Ga.
 March 13, 2002

Report Supplied By USDA

Prices were 3 cents higher on the larger sizes and 1 cent higher on mediums. The market tone was firm. Demand remained moderate to good. Supplies of medium were about adequate to adequate for current requirements. However, the larger sizes ranged close to tight and were confidently held. Breaking stock offerings were mostly adequate and demand for additional product ranged light to moderate. Light type fowl were short to sufficient for the fair demand.

**National Turkey
 Market At A Glance**

Des Moines, Iowa
 March 13, 2002

Report Supplied By USDA

DOMESTIC MARKET HIGHLIGHTS Retail sized hens and toms had a steady to barely steady undertone. Offers were more than adequate for the limited buyer interest. Buyers were mostly taking a wait and see attitude while watching for further market developments. Fresh and frozen de-trapped tenders were about steady, breast meat was difficult to move. Thigh meat was offered at steady to lower trending prices. Most bulk parts trading consisted of less than truck lot volumes and offers were at steady to barely steady levels.

EXPORT MARKET HIGHLIGHTS Export activity was extremely light.

**National Broiler
 Market At A Glance**

Atlanta, Ga.
 March 13, 2002

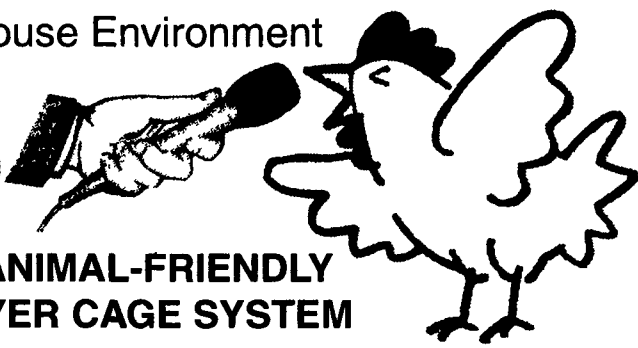
Report Supplied By USDA

Retail demand was seasonally slow to fair with light features, and food service was fair to instances fairly good. Supplies were adequate to ample with smaller sizes in the most balanced position. In the parts structure, trading was light and selective with present inventories usually sufficient for needs. Breast items were irregular, but mostly available, and wings were fully adequate. Leg items were ample and building with export problems still a major concern. In production areas, live supplies were moderate. Weights were mostly desirable with some locations trending heavier.

WHAT'S ALL THE CACKLE ABOUT?

Create a Remarkably Clean House Environment

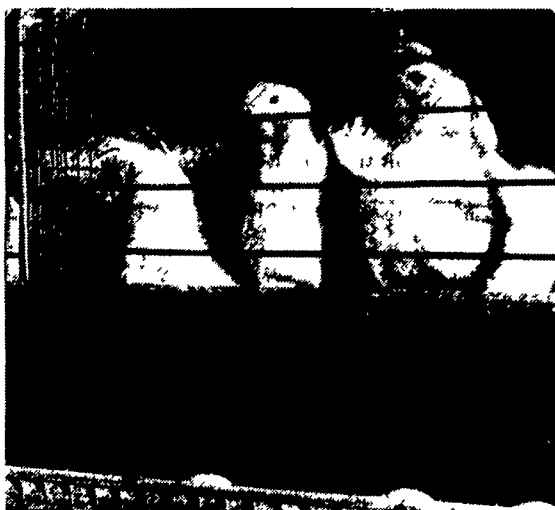
Just ask the girls....



WELCOME TO THE ANIMAL-FRIENDLY
Big Dutchman. STAK-AIRE LAYER CAGE SYSTEM



Dust? What Dust? With the Stak-Aire Layer Cage System, you and your layers can breathe clean air from one end of the house to the other. Healthy birds...healthy profit. Check out the Advantage.



Odor problems are all but eliminated with this layer cage system. If your operation is in an area where odor is a problem, you need to check out the Stak-Aire System.



Walk the building and prove it to yourself... constant temperature top to bottom, side to side. Air to bird cooling. It's tomorrow's system and it's available today.



Flies? If you don't have flies, you don't have to spend money controlling them. Check out this Advantage. It's one of many.



Old Sycamore Industrial Park - 255 Plane Tree Drive, Lancaster, PA 17603
 TELE: (717) 393-5807 FAX: (717) 291-1534 TOLL FREE 800-432-0988
 Email address-partsservice@Hequip.com

Lancaster Farming
**Antiques
 Center**

See pages B27-B32

HAY, STRAW & GRAIN SALE

Every Thursday at 12 NOON

**Vintage Sales
 Stables, Inc.**

(Rt. 30, Paradise, PA)

For more information

(717) 442-4181

(717) 768-8204



**Hay And Straw Sales
 Will Start At 10 A.M.
 Every Wed.**

WOLGEMUTH'S AUCTION

formerly Good's Auction

109 North Maple Ave

Leola, PA 17540

717-656-2947