

Draft Horse Sale History Made At Harrisburg

HARRISBURG (Dauphin Co.) — The annual Pennsylvania Draft Horse Sale was conducted in conjunction with the Keystone Haflinger Sale Feb. 13 at the Farm Show Complex in Harrisburg.

Consignments came from nine different states including Pennsylvania, Ohio, Connecticut, Delaware, Maryland, Michigan, New Jersey, Indiana, and Virginia. The buyer list included 19 different states: Pennsylvania, Dela-

ware, Maryland, Virginia, New York, New Jersey, Florida, Ohio, Indiana, Massachusetts, Connecticut, Vermont, Georgia, Illinois, North Carolina, Maine and West Virginia. Forty head of draft horses and 22 Haflingers found new homes in Lancaster County.

Sale averages were up in every category with the exception of Percheron stallions. This category was down \$199 after having posted a \$632 gain in the 2001

sale. Belgian mares averaged \$2,069, up \$77; Belgian stallions averaged \$2,229, up \$1,210. Percheron mares averaged \$2,435, up \$418; and all geldings averaged \$2,165 up, \$332. The overall average for the draft horses was \$2,086 up \$301.

The top seller in the Draft Horses was a 3-year-old Belgian stallion selling for \$9,200. The top gelding was a 4-year-old Belgian at \$6,300. Two Belgian mares, a yearling and a

3-year-old, along with a 4-year-old Percheron mare tied for highest selling mares at \$4,200. While the top mare at the 2001 sale was much higher, (\$8,200) it is significant to note that the mare average was higher this year than last. Eighteen head of draft horses sold for \$3,500 or more.

The overall average of the Haflinger sale was \$2,112. Mares averaged \$2,442; stallions \$2,342; and geldings \$1,623. The top gelding was \$6,700; the top stallion was \$5,200; and the top mare sold for \$8,700.

Sale organizers have announced that the 2003 event is scheduled for Jan. 21-23.

Following is a list of the top horses, buyers and sellers:

Sale topper at \$9,200: Market Ways Master Duke, 3-year-old Belgian stallion, consigned by Amos Beiler Jr., Gap, to Dale K. Stoltzfus, Leola.

A pair of Belgian full brothers, 3- and 4-year-olds, from Jacob Swarey, Allensville, to Tim Kriz, Bethany, Conn., \$4,000 each.

Chuck, 2-year-old Belgian gelding from Dale K. Stoltzfus to Cole Steinbrick, Marblehead, Ohio, at \$6,000.

Mike, 4-year-old top of the gelding from Maynard Troyer, Topeka, Ind., to Ken Sandoe, Myerstown, for \$6,300.

Johnhart's Misty Lynn, 4-year-old Percheron mare from Russell Johnston and Luann Barnhart, Blairsville, to Aden Miller, Dover, Del., at \$4,200.

Raber's Penny, 3-year-old Belgian mare from Amos Beiler Jr., Gap, to Elmer Kauffman, Christiansburg, for \$3,600.

Orndorff's Captain Rosa, yearling Belgian filly from Corbly Orndorff, Waynesburg, to Roy A. Miller, Stevens, for \$4,200.

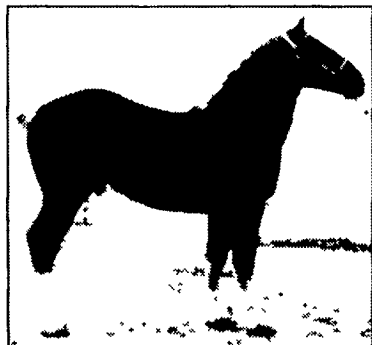
Phinny's Irish Spring, 6-year-old Percheron mare from Joseph Glick, Ephrata, to John David Martin, Selinsgrove, \$3,600.

Destinydale's Rose, 5-year-old from David Peachey, Millcreek, to David K. King, Paradise, \$3,600.

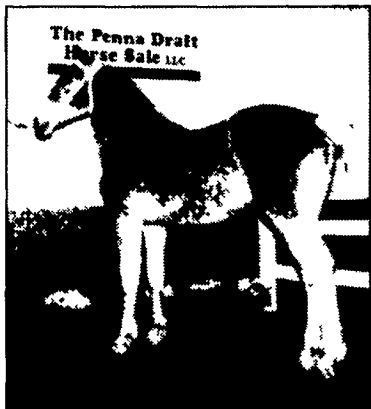
Market Ways Roseann, 3-year-old from Amos Beiler Jr. to Aaron R. Stoltzfoos, Gap, \$4,200.

Market Ways Kim, 3-year-old from Amos Beiler Jr. to David Hoffman, Flanders, N.J., \$3,600.

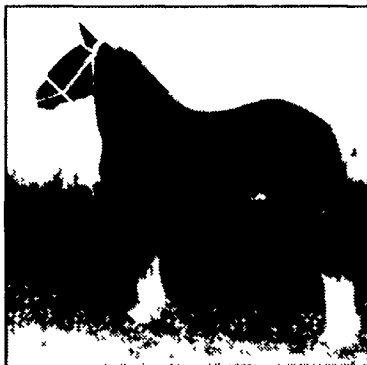
Market Ways Bonnie, 4-year-old from Amos Beiler Jr. to Mark and Terri Houliston, Berryville, Va., \$3,500.



Top seller at Pennsylvania Draft Horse Sale: Belgian stallion, Market Ways Master Duke; owned by Amos F. Beiler Jr., Gap; sold to Dale K. Stoltzfus, Leola, for \$9,200.



Yearling Belgian filly, Orndorff's Captain Rosa, from Corbly L. Orndorff, Waynesburg; sold to Roy A. Miller, Stevens, for \$4,200.



Pa. Draft Horse Sale: Mike, Belgian gelding from Maynard Troyer, Topeka, Ind., sold to Kenneth Sandoe, Myerstown, for \$6,300.



Haflinger gelding, Alert Lee Rah, purchased by Barbara Ann Uhlig, Medford, N.J., for \$6,700.



Pa. Draft Horse Sale: Percheron mare, Johnhart's Misty Lynn, 283545; from Russell R. Johnston and Luann Barnhart, Blairsville; sold to Aden Miller, Dover, Del., for \$4,200.



Top selling Haflinger mare, Baruna GF, purchased by Ridgeview Haflingers, Loysville, for \$8,700.

Videos Available From Dairy Stakeholders

MIDDLETOWN (Dauphin Co.) — Need an opener or program for that upcoming 4-H, FFA, Young Farmer or service club meeting? Two informative videos on the dairy industry are currently available through the Pennsylvania Dairy Stakeholders that may help you fill your program needs.

Pennsylvania farm business owners are not alone in their quest to become better producers. That is the message sent by the video "Make It Work in Pennsylvania" to dairy producers across the state. This 13 minute presentation exhibits the many services available to aid Pennsylvania farmers in their success. The video showcases successful dairy farm businesses and the management systems they are utilizing. Several industry professionals make appearances to present tips on how to focus on what is important in making a dairy farm

business more profitable and enjoyable.

Part of making the Pennsylvania dairy industry stronger is changing how the state's non-farm population looks at the business of producing milk.

"Milk: It Does an Economy Good!" shows what a successful dairy farm business can do economically and socially for its surrounding community. Farming does not look the same as it did twenty years ago, and it does not work the same either. This 10 minute video shows how dairy farm businesses, as they have continued to develop, are having an even greater positive impact on various factors of community development.

Both videos make excellent presentation pieces for group meetings. To obtain a free copy of either of these videos, contact Michelle Jaymes-Parks at (717) 948-6609 or mmj113@psu.edu.

Animal Agriculture Professionals To Meet In Chicago March 24-28

BOWLING GREEN, Ky. — "Animal Agriculture — Dealing With New Realities" is the theme for the 2002 annual meeting of the National Institute for Animal Agriculture (NIAA). Considerable attention will be devoted to food and agricultural security, bioterrorism, animal health safeguarding and emerging diseases. Scheduled for March 24-28, at the Palmer House Hilton in downtown Chicago, Ill., this gathering will include producers, veterinarians, business executives, scientists, academicians, state and federal regulatory officials and other stakeholders in the animal food and fiber industry.

Among the speakers invited to appear at the opening general session is Agriculture Secretary Ann M. Veneman. Among confirmed keynote speakers is Dr. Paul Kitching, director of the National Centre for Foreign Animal Disease in Winnipeg, Manitoba.

Dr. Kitching, recognized globally for his expertise in foot-and-mouth disease (FMD), will speak on FMD, Hog Cholera and BSE — Lessons Learned from the U.K. Experience.

NIAA committees will present 15 information-packed seminars addressing the breadth of issues affecting animal agriculture today. Other groups that will meet in conjunction with the NIAA annual meeting are the National Assembly of Chief Animal Health Officials, National Animal Health Officials, National Animal Health Emergency Management Steering Committee.

More information on the 2002 NIAA annual meeting can be found on the Internet at www.animalagriculture.org, or by calling (270) 782-9798.

(Continued from Page A36)

Custom Rates: Selected Farming Operations, Pennsylvania, 2002, Continued				
Job	Basis of Charge	Mountain Section (Dollars)	Valley Section (Dollars)	State (Dollars)
----- Planting & Drilling (Continued) -----				
Broadcast Seeding (On Grain Fields)	Acre	6 80	8 00	7 40
Cleaning Grain Seed				
With Treatment	Bushel	0 93	1 19	1 08
Without Treatment	Bushel	0 56	0 69	0 64
----- Spraying -----				
Ground Equipment				
Spraying for Weed Control				
Excluding Material	Acre	8 10	7 50	7 70
Spraying for Corn Borer				
Including Cost of Material	Acre	13 50	11 80	12 70
Excluding Cost of Material	Acre	8 60	6 90	7 50
Spraying for Spittle Bug or Alfalfa Weevil				
Including Cost of Material	Acre	12 80	11 80	12 30
Excluding Cost of Material	Acre	7 80	6 90	7 40
Aerial Application (Excluding Material)				
Fixed Wing	Acre	9 90	10 10	10 00
Helicopter	Acre	11 30	8 80	8 80
----- Miscellaneous -----				
Grain Hauling				
Local	Bushel	0 15	0 14	0 14
Long Distance	Bushel	0 32	0 25	0 29
Grain Storage	Bushel Per Month	0 05	0 04	0 05
Stalk Shredding P T O				
Spreading Bulk Fertilizer				
Dry	Acre	5 90	5 80	5 80
Liquid	Acre	8 00	7 40	7 60
Side Dressing	Acre	7 50	7 70	7 60
Grinding Feed				
Corn Oats or Barley	Hundredweight	0 65	0 64	0 64
Corn & Cobs	Hundredweight	0 74	0 69	0 72
Cobs	Hundredweight	0 78	0 63	0 71
Additional Charge for Mixing	Hundredweight	0 40	0 31	0 36
Machine Tiling (No Tile)	Foot	0 64	0 82	0 73
Back Hoe	Hour	43 60	48 20	46 10
Sawing Wood Chain Saw	Hour	15 50	14 60	15 10
Post Hole Digging	Hole	1 70	1 70	1 70
Manure Loading Solid	Hour	33 90	36 50	35 20
Manure Spreading Solid	Hour	31 50	34 00	32 80
Manure Pumping	Hour	27 30	20 10	22 00
Manure Spreading Liquid	Hour	45 60	54 60	50 00
Bulldozing (Avg H.P. 110)	Hour	61 30	68 60	64 70