

## Dairylea Joins With 30 Amish Farms In Project

SYRACUSE, N.Y. — In a commitment to grow dairying in the Northeast, Dairylea Cooperative Inc., the region's largest milk marketing cooperative, agreed to take on the challenge of marketing milk for an Amish farm community in Montgomery County, New York. Together, Dairylea and 30 Amish families constructed and outfitted nine milk houses throughout the community, enabling the farms to begin shipping Grade A milk through Dairylea.

The relationship was established nearly seven months ago when the Amish farmers, who were interested in finding a new, more profitable market for their milk, approached Dairylea.

"This was a unique project, in that we needed to work around the traditional methods of Amish farming, but meet the necessary requirements for shipping Grade A milk," said Dairylea Regional Manager Calvin Gates.

Dairylea assisted with the logistics and financing for the construction of the nine milk houses serving the farms. Dairylea field personnel worked closely with the group to determine the best locations for milk houses. In addition, the staff helped to locate and purchase bulk tanks, work with government agencies, and secure financing through Agri-Financial Services, a subsidiary business of the Cooperative.

The farms recently using the milk houses will ship a combined 450,000 pounds per month. Dairylea Cooperative Inc. is a farmer-owned agricultural marketing and service organization based in Syracuse. It has more than 2,500 member farms located throughout the Northeast. Dairylea is a provider of resources such as insurance coverage, loan programs, milk price risk management service, business planning, livestock marketing and investment and retirement planning through its holding company, Agri-Services, LLC.

## BQA Chute-Side Training Dates Set

MIDDLETOWN (Dauphin Co.) — The Pennsylvania Beef Council announces the Spring 2002 listing for the chute-side training of the Pennsylvania Beef Quality Assurance (BQA) program.

• April 1 — Mercer County at the Bob Rose Farm in Cochran, (814) 425-7063, 7-9 p.m., or contact Bob Calvert, Mercer County Extension Office, (724) 662-3141.

• April 3 — Fayette County at the Warren Dick Farm in Smithfield, (724) 569-2353, 7-9 p.m., or contact Don Fretts, Fayette County Extension Office, (724) 438-0111.

• April 9 — Franklin County at the Jason Johns Farm in Mercersburg, (717) 328-9850, 7-9

p.m., or contact Jerry Wingert at the Franklin County Extension Office, (717) 263-9226.

• April 10 — Lancaster County at B & R Cattle in Marietta, (717) 426-3258, 7-9 p.m., or contact Chet Hughes at the Lancaster County Extension Office, (717) 394-6851.

• April 16 — Wyoming County at the Walt Dana Farm in Tunkhannock, (570) 836-1907 residence, (570) 836-2145 office, 7-9 p.m., or contact Wyoming County Extension Office, (570) 836-3196.

• April 17 — Schuylkill County at the Zimmerman Farms in Pitman, (57) 648-2078, 7-9 p.m., or contact at the Schuylkill County Extension Office, (570) 622-4225.

• April 18 — Cambria County at the Dan Carney Farm in Ebensburg, (814) 884-0231, 7-9 p.m., or contact Ron Nostetter at the Cambria County Extension Office, (814) 472-7986.

The chute-side training is the second part of a two-part program that enables producers and others to become BQA certified. The first part, classroom sessions, were conducted in February and March. Training and evaluation provided by extension and industry professionals assist producers in the necessary steps to insure safety and quality of beef.

Please confirm your attendance at any of the above listed meetings by calling or e-mailing the Pennsylvania Beef Council at (717) 939-7000, e-mail pstoop@s@pabeef.org.

## Conservation District Seedling Sale

LANCASTER (Lancaster Co.) — The Annual Tree Seedling Sale sponsored by the Lancaster County Conservation District is in progress. The deadline for placing orders is Friday, March

22. All prepaid orders can be picked up on Friday, April 19 at the Kiwanis Pavilion in Lancaster County Central Park.

Among the sale items this year are bare-rooted conifer and hard-

wood seedlings, three types of groundcover, ornamental flowering fruit trees, plus an expanded assortment of native trees and shrubs. Flower lovers will be interested in the wildflower seed mix that contains 23 species of annual and perennial wildflowers.

Proceeds from this sale benefit environmental education activities in the county. To receive an order form, call (717) 299-5361, ext. 5.

### MAGISTRAL - For Men Only!

(Nature's Answer to Prostate Enlargement)

Did You Know That ... ?

**PROSTATE CANCER KILLS  
A MAN EVERY 15 MINUTES!**

Have You Noticed Any of These Signs - Yet ?

- Increased Urinary Frequency and Urgency - Especially at Night ?
- Voiding is Slow, Incomplete, and Sometimes Painful or Burning ?
- Decreased Sexual Activity and Occasional Impotence ?

**THEN YOU MAY ALREADY HAVE  
AN ENLARGED PROSTATE !**

60% of Men Over 40 Have an Enlarged Prostate - and may not know it !

An enlarged prostate can turn into something more serious. **ACT NOW**, rather than later !

TAKE CONTROL OF YOUR HEALTH. PROTECT YOUR PROSTATE.

**MAGISTRAL - For Men Only...**

offers a very powerful, fast-acting liquid herbal preparation.

This profound male tonic may be taken for prevention, or to alleviate frustrating prostate symptoms.

**Magistral is a Natural Product (no side effects) ! - Not a Drug (side effects) !**

It has a six year proven track record in Canada - and over 20,000 daily users.



We have sold Magistral to Men in Berks County, PA for over nine months now. We have many repeat customers here, because **Magistral truly works for them.** Most experienced a major improvement within a week, - and many a lower PSA.

Call us at **Canada Health - Reading, PA - for Free InfoPack on MAGISTRAL. 610-921-2450 OR 800-775-1335**

Saw Palmetto Palm

## We Salute Our Farming Industry

**Dennis Keefer**  
Sr. Agricultural Lender  
(570) 966-2555

**Let Us Help You Harvest Your Dreams**

WEST HILTON

## Concrete Walls Built to Your Construction Needs



**Lancaster Poured Walls, Inc.**  
Concrete Construction

2542 Horseshoe Rd. • Lancaster, PA 17601

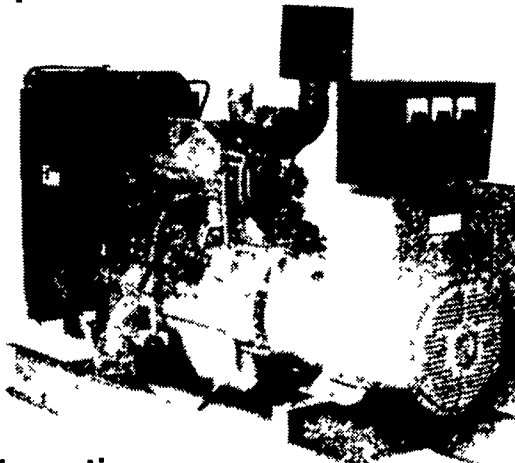
**717-656-7370 Fax 717-656-7350**

Concrete Pumping, 28 Meter Pump

Agricultural • Commercial • Residential

## Agricultural Generators

Spectrum Detroit Diesel



Automatic L.P. Gas, Diesel, Natural Gas Generators  
5 to 2,000 KW



P.T.O. Generators  
25 to 135 KW Units  
In Stock!

Service - Rental - New & Used Units In Stock

**PENN POWER SYSTEMS**

Power Generation Systems Specialists

0330 Fonderwhite Road, Lebanon, PA 17042

Call Leonard Martin

**717-273-4544**

Fax 717-273-5186