

BRUBAKER'S AUTO SALES

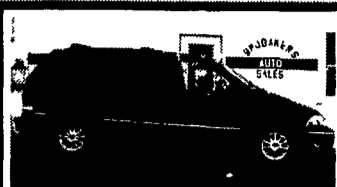
PH. 717-866-5237

Hours: Mon.-Fri. 8 a.m. - 9 p.m.; Sat. 8 a.m. - 6 p.m.

ROUTE 422
MYERSTOWN, PA



99 FORD F-150 XLT 4x4 OFF-ROAD QUAD-CAB, Green, 4.6 V8, 5 Sp, AM/FM/Cas, AC, PW, PL, CC, Tilt, Keyless-Entry, 47,570 Mi **\$17,600**



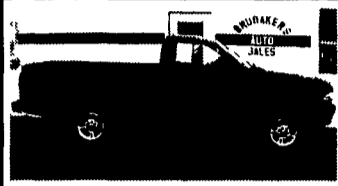
99 FORD WINDSTAR SE, Black, 3.8 V6, AT, PW, PL, CC, Tilt, Dual-AC, AM/FM/Cass/CD, Pwr-Seat, Keyless-Entry, 19,140 Mi **\$16,900**



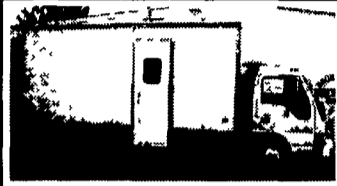
99 CHEVY SUBURBAN 1500 LT 4X4, 8/Pass, Black, 5.7 V8, AT, AM/FM/Cass, PW, PL, CC, Dual-AC, CD, Pwr-Seats, Heated-Seats, Leather, Keyless, 68,140 Mi **\$18,900**



98 DODGE RAM 1500 QUAD-CAB 4X4 LARAMIE SLT, Blue/Gray, 5.2 V8, AT, AM/FM/Cass, AC, PW, PL, CC, Tilt, 59,566 Mi **\$16,900**



97 DODGE DAKOTA SPORT, 4x4, Red, V6, AT, AM/FM/Cass, AC, 70,722 Mi **\$10,600**



97 GMC FORWARD 17-BOX W4, Turbo-Diesel, White, AT, AM/FM/Cass, AC, Tilt, 14,250/GVW, Lift-Gate, 78,970 Mi **\$11,900**



01 CHEVY SILVERADO 2500 LS, Crew-Cab, 4x4, Green, 6.0 V8, AT, AC, PW, PL, CC, Tilt, AM/FM/CD, Keyless-Entry, 6/Pass, 9200/GVW, 16,185 Mi **\$27,500**



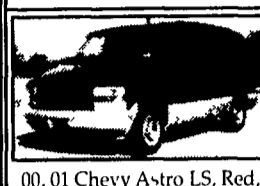
00 CHEVY ASTRO LS, AWD, 7/Pass, Maroon, 4.3 V6, AT, AM/FM/Cas, AC, PW, PL, CC, Tilt, Keyless-Entry, Quad-Seats, 72,462 Mi **\$10,900**



00 Buick Century, Black, 3.1, Auto, Air, PW, PDL, Tilt, Cruise, AM/FM/Cass, 27,000 Mi **\$11,900**



01 Chevy Venture LS, Tan, 3.4, Auto, Dual Air, PW, PDL, Tilt, Cruise, 15,200 Mi **\$17,900**



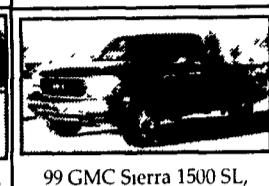
00, 01 Chevy Astro LS, Red, Grey, Auto, PW, PDL, Tilt, Cruise, Dual Air, 32,000 & 26,000 Miles **\$14,900 & \$15,900**

Richard S. Brubaker
Auto Sales

Reamstown, PA
717
336-3190



96 Chevy SL 1500, Green, 4.3 V6, Auto, Air, ST/Cass, 45,000 Mi **\$9,800**

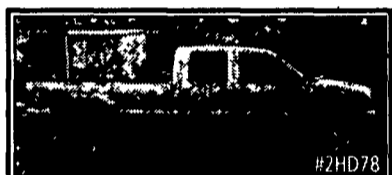


99 GMC Sierra 1500 SL, 4x4, Black, 4.3 Auto, Air, PDL, Tilt, Cruise, ST/Cass, 22,000 mi **\$16,500**

1947 Chevy 4400, 1-ton dump, shed kept, runs good, \$1500 obo. 1947 GMC 12 ft flat, all orig, shed kept, \$1500 obo. 1980 Ford Louisville, 390 gas, 4spd, 45,800 orig mi, 18 ft steel dump, no hoist, \$3500 obo. 1973 IHC Load Star 1800, 345, 5spd, 23' x 7 ft hay body w/4' grain side & 8' cabover, shed kept, \$3500 obo. 410-357-4073 after 7pm

New Holland TRUCKASTOP

OVER 50 NEW HEAVY DUTY TRUCKS & 20 CARGO VANS IN STOCK!



NEW 2002 FORD F-350 4x4 V10
4 dr, auto, 6.8L, A/C, cass, cruise!
Save \$3752 from MSRP:
\$28,993



NEW 2002 FORD F-550 CHASSIS 4x4
7.3L V8, diesel, tract cntrl, A/C, cass!
Save \$5646 from MSRP:
\$29,979



NEW 2002 FORD F-350 CREW CAB 4x4
XL, V8, diesel, 6-spd, A/C, cruise!
Save \$3736 from MSRP:
\$32,959



NEW 2001 FORD F-450 w/ EBY DUMP
Auto, 6.8L V10, 11' dump body, A/C!
Save \$6000 from MSRP:
\$34,933

'02 E-250 SUPER CARGO \$20,998
Auto, 5.4L V8, A/C, racks & bins, stereo! #2F258

'02 FORD F-350 4X4 \$24,955
Auto, 6.8L V10, ltd slip diff, cass, cruise! #2HD198

'02 F-350 CREW CAB 4X4 \$30,994
7.3L V8, diesel, 6-spd, A/C, cass, cruise! #2HD156

'02 FORD F-350 CREW CAB \$33,933
4x4, 7.3L diesel, XL, auto, A/C, cass! #2HD81

'02 FORD F-250 4X4 \$22,983
Auto, 5.4L V8, snow plow prep, A/C, PS/PB! #2HD148

'02 F-550 CHASSIS CAB XLT \$30,922
6-spd, ltd slip diff, 7.3L V8, diesel, PW, cass! #2HD82

'02 FORD F-250 S/CAB XL \$31,924
4x4, diesel, auto, ltd slip diff, 7.3L V8, cruise! #2HD92

'02 FORD F-250 S/CAB 4X4 \$33,953
XLT, auto, V8, diesel, PW, cass/CD, alarm! #2HD172

PRE-OWNED WORK TRUCKS!

WE ALWAYS HAVE A HUGE SELECTION OF USED TRUCKS! Here is a partial listing:



1984 FORD F-700 STAKE BODY
V8 engine! Ready to Work!
Buy Now For Only:
\$6,994



2002 FORD E-150 CARGO VAN
V6, auto, air cond, pwr wnds/lks!
Buy Now For Only:
\$14,950



1997 FORD F-250 S/CAB 4x4
XLT, diesel, auto, A/C, PW!
Buy Now For Only:
\$22,987



1999 FORD F-250 CREW CAB
4x4, XLT, diesel, only 22k mls!
Buy Now For Only:
\$29,490

'97 FORD F-150 4X4 \$12,987
V6, auto, A/C, 58k miles! #N2029B

'00 FORD RANGER S/CAB \$18,990
4x4, XLT package, V6 engine! #P2278

'97 FORD F-250 CREW CAB \$22,950
4x4, XLT, diesel, auto, pwr wnds/lks! #1HD149B

'97 F-350 CREW CAB 4X4 \$22,987
XLT, diesel, auto trans! #1F901L

'99 RAM 1500 QUAD CAB \$17,986
4x4, SLT, V8, auto trans, PW, PL, CD! #2HD150A

'00 FORD E-350 XLT \$19,897
15 pass van, V10, pwr wnds/lks! #P2282

'00 FORD F-150 S/CAB 4X4 \$22,985
XLT, 5.4L V8, auto, pwr wnds/lks, CD! #P2263

'00 FORD F-250 S/CAB \$24,950
4x4, Lariat, V8, auto, leather! #P2264

Where A Little Country Means A Lot Of Savings!

New Holland

508 W. Main St. (Rte. 23)
New Holland, PA

717-354-4901

800-642-8605

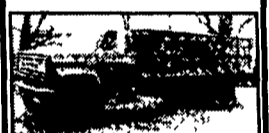
www.newhollandauto.com



Tax, tags & license fees addtl! Prices on new vehicles include all applicable rebates



1979 CHEVY C-70
with 20-ft dump body live tandem, 427 big block, 5-spd trans with 4-spd auxiliary, skid plate in bed with large grain door in rear, approx 52,000 miles

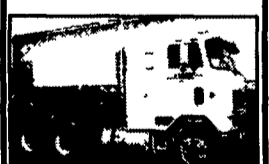


1975 GMC 366
with 16-ft dump bed, 5-speed w/2 speed, removable sides, rear grain door

JUST 9,000 ACTUAL MILES



1984 MACK SUPER LINER
10-spd trans Big Cam 350 Cummins overhauled slid-ing 5th wheel, good rubber



1985 INTERNATIONAL
13-spd, Cummins Big Cam, complete overhaul, live tandem with sliding 5th wheel, good rubber



1984 PETERBILT MODEL 359
Double flattop sleeper 13-spd trans, 400 Cat engine, 113,000 miles on complete overhaul excellent rubber

330-223-1000