

CHAPMAN FORD LINCOLN MERCURY NISSAN

717-272-7671
Parts Dept. Open Daily 8-5
Sat. 8-12 717-273-8168

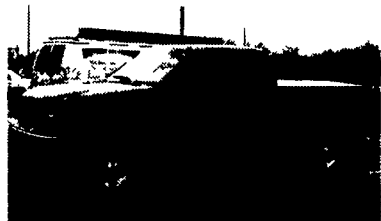


LEBANON

20th & Cumberland Sts.
Rt. 422 West
9-9 Daily, 9-5 Sat.



2000 FORD F250
Ext. Cab 4x4, XLT, #4315F



00 FORD F150 XLT
Extend Cab, 4x4, #P5018



99 FORD F150 SUPERCAB
4x4, 5 Spd., Just Traded
#4321F



98 FORD EXPLORER
"Eddie Bauer"
"Sport Utility Luxury"



99 FORD F250 XLT
Crew Cab, 4x4, "Perfect Work
Truck", #PL5032



98 FORD EXPLORER
V-8, AWD, P5005
"Must See"



00 FORD F350 XLT
"Power Stroke Diesel",
Super Cab, 4x4, #P5012



99 FORD EXPLORER XLT
Maroon, 4x4, Auto, "Ford Certified",
#P5007



99 FORD F150 4x4
Extend Cab, XLT, Off Road,
#P5019

Credit Problems? Call 1-888 CARS 4 You
TRUCKS - UTILITY VEHICLES - TRUCKS

MARLEY GROSS FORD Inc.



96 North Main St
Spring Grove, PA 17362

Telephone 717-225-4765
marleygross@mindspring.com

- 01 E150 Club Wag XLT, 4.6, Hi-AC, Cas, CD, PW, PLX, S/T, P Seat, Red, 1 Owner, Wheelchair Lift, 2K **\$33,995**
- 00 Villager Sport 3.3, Hi-AC, CD, PW, PL, XST, Moon Roof, 24K Green **\$18,995**
- 00 Windstar SE, 3.8, Hi-AC, Cass, Blue, PW, PLX, St, A/C **\$19,995**
- 00 F250 Crew XLT 4x2, 6.8, 5 Spd, AC, Cas, PW, PLX, S/T, WSD 4/14/00, White, 1 Owner, 33K **\$23,995**
- 00 F150 SC XLT, 4x4, 4.6, 5 Spd, AC, Cas, PW, PLX, S/T, P Seat, Bds, Keyless, White, 1 Owner, 37K **\$19,995**
- 99 F350 Crew XLT 4x2 DRW, 7.3, 6 Spd, AC, Cas, CD, PW, PLX, S/T, Bds, Visor, Bed, 1 Owner, 58K **\$28,495**
- 99 F350 Reg XL 4x4, 6.8, 5 Spd, AC, FM, SRW, Silver, 64K **\$16,995**
- 98 Dodge Ram 2500 Sport Extd 4x4, 5.9 Diesel, AT, AC, Cas, PW, PLX, Hitch, Bed, Blue, 44K **\$24,995**
- 97 F150 SC XLT 4x4, 4.6 AT, A/C, PLW, PW, ST, White, 68K **\$14,495**
- 97 F250 Reg XLT 4x2, 5.8, 5 Spd, AC, Cas, PW, PLX, S/T, LS Axle, Blue, 36K **\$13,495**
- 95 Chev G30 Cube DRW, 5.7, AT, AC, FM, 14 Ft. Box, 78K **\$10,995**
- 94 Jeep Cherokee, 4 Dr., Country, 4.0, AT, AC, Cas, PW, PLX, S/T, 6Mo/6,000 Mile Used PowerTrainCare, 81K **\$7,995**
- 93 F150SC XL 4x4, 5.0, AT, AC, Cas, AS-IS, Blue, 107K **\$8,995**
- 85 F350 Rollback 7.5, 4 Spd, 17 Ft., Jer-Dan, AS-IS, 125K **\$8,495**

NEW 2001 & 2002 TRUCKS
BIG SAVINGS & REBATES

- 01 F150 Reg Cab, 4x4, Flareside **\$18,399**
- 01 Explorer Sport, Moon Roof **\$23,799**
- 01 Ranger S-Cab, 4x4, Edge **\$19,999**
- 02 F250 S-Cab, 4x4, 5.4 AT **Call**
- 02 F250 S-Cab, 4x4, 6.8 AT **Call**
- 02 F250 Crew Cab, 4x4, 6.8 AT **Call**
- 02 Expedition XLT 5.4, 4x4 **Call**
- 02 Sport Trac 4.0 4x4 **Call**

ALL PRICES INCLUDE FACTORY REBATES

JONES QUALITY PRE-OWNED BEST BUYS!

PONTIAC • HONDA • GMC TRUCK • ACURA • USED CAR CENTER
1335 Manheim Pike • Lancaster, PA
717 394-0711
QUALITY PRE-OWNED BEST BUYS!



Prices based on straight sale. Tax and tags extra. Trades accepted at actual cash value. Must present this ad at time of purchase for sale price.

Diesel

NEW 2002 GMC CREWCAB 4X4
6.6 Duramax Diesel, Allison Auto, Air, AMFM-CD, #33021
MSRP \$40,342
SALE **\$35,800***
*Price Includes GM Bonus Cash Of \$2002

2001 GMC K25 4X4 W/SNOWPLOW
Auto, Air, 8100 V8, Allison Auto, SLE & More! #29761
MSRP \$37,717
SALE **\$31,999**

2001 CHEV. BLAZER 4X4 LT
Auto, Air, V6, 19K Miles, #6366, Was \$23,900
SALE **\$20,550**

2000 GMC K25 XCAB
4x4 Longbed, 8600 GVW, AT, Air, V8, 13K Miles, #6486
Was \$27,900
SALE **\$24,700**

2000 DODGE 150 XCAB 4X4
SLT Auto, Air, V8, Black #6408,
Was \$17,900
SALE **\$14,400**

99 GMC CREW CAB 4x4
454, Auto, Air, SLE, 25K Miles, #6485, Was \$25,900
SALE **\$23,900**

99 CHEV C1500 XCAB
Auto, Air, V8, Silverado, 3 Door, #6473, Was \$18,000
SALE **\$15,100**

99 GMC JIMMY 4 DOOR 4x4
Auto, Air, V6, SLE #6467, Was \$18,900
SALE **\$15,700**

99 CHEV TAHOE 4x4
Auto, Air, 350, 37K, Dk Blue #6379, Was \$24,800
SALE **\$22,400**

99 CHEV K15 XCAB 4X4 PICKUP
Auto, Air, 5300, LS, Dk Blue #6407, Was \$22,000
SALE **\$19,000**

99 FORD RANGER XCAB 4X4
Auto, Air, V6, XL, #6455, Was \$12,900
SALE **\$10,750**

99 HONDA CRV 4X4
Auto, Air, CD, 19K Miles, #6433, Was \$19,900
SALE **\$17,900**

99 GMC K15 XCAB
4x4, SLE, Auto, Air, 5300 V8, 28K Miles, #6480, Was \$24,900
SALE **\$21,950**

98 TOYOTA TACOMA 4x4
5 Spd, Air, 28K Miles #6466, Was \$15,900
SALE **\$12,800**

98 CHEV K3500 4X4
350 Silverado, Auto Air 27K Miles #6415, Was \$20,750
SALE **\$18,900**

98 CHEV ASTRO AWD VAN
Auto, Air, LS, 8 Pass, #6434, Was \$14,800
SALE **\$12,100**

98 CHEV K2500 XCAB 4x4 Silverado, Auto, Air, 350, 8600 GVW, 40K, Black #6461, Was \$22,900
SALE **\$20,400**

97 CHEV. K15 XCAB 4X4
Auto, Air, V8, LS, Cap #6456, Was \$19,900
SALE **\$16,875**

94 CHEV ASTRO VAN
Auto, Air, V6, 8 Pas, 86K Miles #6435, Was \$8,900
SALE **\$6,550**

92 GMC K25 XCAB 4X4
Auto Air, 350, 8600 GVW #6474, Was \$10,900
SALE **\$8,500**