

CHAROLAIS Bulls, open & bred heifers. Top genetics at reasonable prices. Cameo Farm, Frederick Co., MD 301-831-9243

Grade and Registered Holstein Heifers, also Canadian Herds. For further info, 717-574-5024

Registered Texas Longhorns: bulls, heifers, cows. Reasonable prices. 717-637-3090

Registered Texas Longhorns: bulls, heifers, cows. Reasonable prices. 717-637-3090

We will pay top price for cows and all stages of heifers to fill our dairy. 443-691-2313.

Certified Organic Holstein heifers due Sept. & Oct. 717-687-6346

Young free-stall cows from AI background of \$1,150/ea. Trucking not included. D A Rankin, 514-983-6392.

Herd of 32 dairy cows, year round herd, mostly 3rd & 4th lactation, \$1,200/ea. Lebanon Co, 717-949-3477.

Reg Red Angus yearling bulls. 570-726-7889, cell 570-660-1699.

Your pick of 40 Holsteins, parlor free-stall, AI bred, DHIA, low SCC. 717-328-2411.

Pick 30 cows out of herd of 50 Holsteins, reg. & grade. 610-273-0542

Yearling Angus bulls for sale, \$1200 each. 717/548-3282

Holstein Bulls from the proven cow family of Weaverline Bench Eddie, dams tested neg to Johnes. Weaverline Holsteins 717-933-9853.

Young herd of 41 dairy cows, good feet, good udders, low SCC. 814-629-9197

Holstein Dairy Cows, fresh & all stages lactation, milking up to 95lbs., 1st to 4th lactation. Christian E. Stoltzfus 31 E. Eby Rd, Leola PA 17540

Polled Hereford bull, herd sire, 19Y, 6 yrs old, gentle, great EPDs, low birth weights, growth & milk. 610-384-6025

2 quality well-bred heifers, 1 Ayreshire Holstein X & straight Holstein. Both due in June. \$2,200. 570-922-4386.

(9) 2 yr old X-bred beef steers, yearling bulls & heifers, also yearling AMHR miniature stallion & 2 mares. 570-888-9752, 570-888-4868.

Simmentals

McClure Mills Farms

Huntingdon County, Pa.

(814)542-2588 (days)

(814)542-2207 (eves)

Young Farmer wants to buy Holstein & Jersey heifers (814) 224-5909.

SIMMENTAL SALE

21 Bulls
45 Females

March 29, 2002 10 AM

Ag Arena
Penn State College, PA

Free catalog
1-800-276-2123

SLICK CONCRETE?

2" Wide Grooves for Superior Footing
An effective and economical way to protect cattle from injury due to slick concrete

MID-ATLANTIC SCABBLING SERVICE
CARL WEAVER

Call Anytime
(800) 658-8070

75 Cow Reg. Herd,

19,160 lb. Herd avg..

4.1% fat,
3.2% Protein

Fayette Co., PA

814-395-3633

MULVANEY

LIVESTOCK HAULING

Also DOWN & CRIPPLED CATTLE REMOVAL

Covering Berks, Chester, Lancaster, Lebanon, Lehigh & Northampton Counties, PA

800-789-COWS

(2697)

or locally 610-746-2854

Calls the night before appreciated!!

Lancaster Farming, Saturday, March 16, 2002-D23

20 Head of Just Fresh & Close Jerseys and Crossbreds. Top Quality. Excellent Grazers.

570/837-3137 farm
507/261-2631 cell

Dairy Cows & Heifers Bought & Sold Freddie S. Smith 540/639-2262 After 8 PM

Free stall herd. 40 cows, all AI, no BST. 68 lb. average w/4%. All top Sires & bred top Sires. Outside, Storm, Come Star Lee, Milan, Ignitor
717-351-1017 or 717-768-3320

WANTED

Jersey/Holstein cross calves.

Will pick up at farm.

Will pay top dollar.

717-661-5621

BUY DOWN & INJURED CATTLE

100 Mile Radius Of Harrisburg, Pa. Prompt Payment - Top Price Paid

JOHN JONES

717-249-7685 Res.

717-432-4225 Shop

WANTED

Holstein Heifers - Registered or Grade From 2 mo. old to Bred 7 mo. No tests. Immediate pay and pickup.

McCartney Livestock

Dry Run, PA 17220

Call (717) 349-2393 or (717) 349-7752

Lancaster Area call (610) 857-1932

BULLS

We have service age bulls, and younger available. We specialize in choosing the right bull to fit your breeding program, focusing on type, longevity and production.

WELK-CREST HOLSTEINS

Matthew T. Welk

717-548-2597

FEEDER CATTLE SALE

Sat., March 23, 2002 10:00 A.M.

****Note:** Wed., Mar. 27 approx. 6 PM, selling 100+ brood cows limousin angus crossbred to black bulls due to calve end of April.

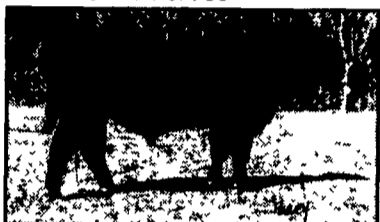
Finger Lakes Livestock Exchange,
3 miles east of Canandaigua, NY
on Rt. 520.

For info 1-585-394-1515.

SOUTH BRANCH FARMS OPEN HOUSE BULL SALE

Friday, April 5, 2002 at 5 PM

at the farm just south of York off exit 14 of I-83



Lot 1 04GO: Forte x Dividend
He sells along with 2 other older bulls

Lot 5 9021 E161 x Fix It
One of 23 Spring Yearlings selling

These are big, rugged, pasture raised bulls ready to go to work. They will be semen tested, ultrasound evaluated, and sell with a first breeding season guarantee. Volume discounts available and free delivery in PA and surrounding states on any bulls sold for \$1500 or more.

Also, please join us for a free meal at 6 PM followed by a program by Karl Hess on what you need to know to feed your calves in a custom feedlot. Please call by April 1 with your meal reservations.

Rt 1, Box 131AA • Seven Valleys, PA 17360

Mr & Mrs Robert A. Kinsley & Sons, owners

O (717)741-8395 • H (717) 428-3526

Robert Livingston, manager • Kent Bovard, herdsman (717) 747-0752

SOUTH BRANCH FARMS

BEEF TIPS

Study on Bulls (2)

The American Simmental Association has the only genetic evaluation and EPDs for meat tenderness. Studies, continuing even now, involved the greatest and most often used Simmental sires. Simmental breeders can now tell you what tenderness you can expect to find with steers sired by many of the most popular Simmental sires. Another reason to use a Simmental bull on your herd. This information courtesy of:

The Pa. and Maryland Simmental Assoc.

1-800-276-2123

www.cattleclick.com/psa



PENNSYLVANIA'S 29th PERFORMANCE TESTED BULL SALE AND 13TH ANNUAL BEEF EXPO

BEEF EXPO - MARCH 28-MARCH 30, 2002
BULL SALE - MARCH 29, 2002 AT 11:00 A.M.
AT PENN STATE'S AG ARENA

PA BEEF EXPO SCHEDULE

Thursday, March 28, 2002

- Trade Show Set-Up
- Beef Quality Assessment Demonstration - 1:00 - 4:00 p.m.
- Quiz Bowl Preliminaries - 6:00 p.m.
- Cattlemen's Banquet, Membership Meeting and Quiz Bowl Finals - 6:30 p.m.

Friday, March 29, 2002

- Beef Skill-a-drama - 8:00-10:00 a.m.
- Trade Show Open - 9:00 a.m.
- Performance Tested Bull Sale - 11:00 a.m.
- Simmental Bull Sale - 1:00 p.m.
- Shorthorn and Steer Female Sale - 4:30 p.m.
- Junior Steer Weigh - 7:00-9:00 p.m.

Saturday, March 30, 2002

- Complete Junior Steer Check-in - 6:30 a.m. - 7:30 a.m.
- Senior Heifer Sale - 8:00-11:00 a.m.
- Steer Show immediately following Heifer Show
- Trade Show - 9:00 a.m. - 4:00 p.m.
- Showmanship Finals - 6:00 p.m.

Large Trade Show & Cattle Exhibits throughout the Expo
Keystone Rib-eye on roll and other great foods

BULLS ON TEST
53 Angus (4 Red Angus)
1 Charolais
3 Polled Herefords
1 Limousin
21 Simmentals

BREED FEMALE SALES
Shorthorn
Simmental

For Bull Sale & Beef Expo Information Contact - Glenn Eberly

Pennsylvania Department of Agriculture's
Livestock Evaluation Center

651 Fox Hollow Road, State College, PA 16803

Phone: 814-238-2527 or 814-865-5857

E-mail: geberly@psu.edu OR geberly@state.pa.us

If you're in it for the profit...



Simmental performance means more profit.

Today's Simmental are in demand as top head replacements.

They also complement other breeds in crossbreeding programs, increasing growth, muscle and mothering ability.



Meet Today's Challenges with Today's Simmental!

For the best of Today's Simmental, join us at...

PA BEEF EXPOSITION 2002

SIMMENTAL SALE

Friday, March 29, 2002 • 1:30 p.m. (approx.)

Will follow PCA Bull Test Sale

Penn State University • State College, PA

Selling 45 lots of Selected Simmental Genetics

Cow/Calf Pairs • Bred Heifers • A great line-up of halter broke show prospect heifers!

For Catalog of Information contact Sale Manager

DP Livestock Sales

Doug Paul • 6421 Avondale Dr • Suite 202
Oklahoma City, Oklahoma 73116 • (405) 840 9012
Sale Management • Herd & Sale Consulting
Doug Parke • Office 859-987-5758

Pennsylvania Simmental Association President

Joe Messick • 717 939 3385

Sale Chairman
David Downs • 814-786-8226

Auctioneer
John Spiker • 304-884-7915

This auction is sponsored by the Pennsylvania Simmental Association.