



**EDWIN HORNING & SONS FARM MACHINERY**

248 Meadow Valley Road, Ephrata, PA 17522  
717-733-7408 Phone 717-738-4897 Fax

Financing Available

**TRACTORS**

- '91 JD 2955 w/Cab, Air Hi-Lo, 2 Hyd., Nice & Orig.....\$20,900
- '00 NH TC29D 29HP, 4x4, Hydro, Cruise Control w/72" Mower & NH 7308 Loader, 300 Hrs.....\$13,500
- JD 5310 4x4, 55 HP Diesel, Sync Shuttle, 360 Hrs. w/540 Loader.....\$22,800
- Mitsubishi, 22 HP Diesel, 3 Pt., PTO, 211 Hrs.....\$3,100
- JD 4240, S.G.B., Powershift, 18.4x38 Tires, Wts., 5965 Hrs., Nice.....\$20,500
- JD 2950, 4x4, Hi-Lo, 2 Hyd., 18.4x38 Tires..\$14,800
- JD 870, 28 hp, 4x4, w/72" Belly Mower.....\$9,750
- JD 2950, 4x4, SGB, Hi&Lo, 2 Hyd., 5028 Hrs., Nice.....\$21,500
- JD 430 2 Cyl. 3 Pt.....\$4,700
- Farmall 504 gas, 3 pt. TA.....\$3,400
- MM U302 Gas WFE, 3 Pt.....\$3,900
- MF 85 Gas, PS, WFE, 3 Pt.....\$3,200

**HAY EQUIPMENT**

Specializing in Quality Hay Equipment

- FNH 411 Discbine.....\$5,500
- NH 256 Rake.....\$1,500
- NH 316 Baler w/Hyd. 70 Thrower.....\$6,250
- NH 276 Baler SS w/Thrower.....\$2,850
- NH 70 Baler Thrower Complete.....\$2,300
- Hesston 4755 Big Baler, 3x3 Bale, w/Last Bale Eject., Applicator.....\$24,500
- NI 5409 3 pt. Disc Mower, 9'.....\$3,850
- Agco NI 5209 Discbine, Low Wear.....\$9,400
- NH 163 Tedder, 4 Star, 17'.....\$2,250
- Agco NI 5209 Discbine (Red).....\$8,800
- Fiat NH 1411 **SOLD**, Low Wear.....\$10,700
- NI 5209 Discbine (Grey).....\$6,200
- Fiat NH 617, 3 Pt. Disc Mower.....\$3,800
- Ford NH 316 Baler w/70 Hyd. Dr. TH, Low Wear Very Nice.....\$6,700
- NH 311 Baler w/70 Hyd. Dr. TH.....\$5,600
- JD 337 Baler w/40 Ejector Hyd. Tension.....\$5,700
- ELHO round bale wrapper, self load, trailer.\$3,850
- CIH 8570 Big Square Baler, 3x3 Bale, 24070 Bales, Last Bale Eject, Knotter Fan.....\$23,600
- P2 Greenland 382 Rotary Rake, 10 ft. tandem, 3 pt., same as Deutz Fahr.....\$2,300
- CIH 8570 big baler 3x3 bale, 23,000 bales.....\$24,000
- Fiat NH 256 Rake w/Dolly, Nice.....\$2,500
- JD 935 Discbine-Impeller, 12 Ft.....\$10,900
- NH 256 Rake, Rubber Teeth.....\$1,450
- JD 330 round baler 4x4 bale.....\$5,250

**UNI SYSTEM EQUIPMENT**

- NI 6504 4x30 Corn Head.....\$3,500
- NI 727 Husker w/Elevator, Nice.....\$850

**CORN HEADS**

- JD 443 4x30 Hi-Tin.....\$1,800
- JD 343, 3 RN.....\$1,450
- JD 243 2x30 w/Forage Harv. Adpt. Plate.....\$1,800

**CORN PLANTERS**

- White 5100 4 R Dry Fert. w/Monitor, Nice.....\$3,850
- JD 7200 4 Row Corn **SOLD**, dry fert Finger Pickup, no till coulters, monitor, nice.... Call

**TILLAGE**

- McCurdy Perfecta S-Tine Fld. Cult w/Rolling Basket..... Call
- Brillion 12 ft. Cultipacker.....\$975
- Brillion 11 ft. Cultipacker 3/Pups.....\$1,175
- White 508 Plow 3x18 Spring Reset Hillside Hitch.....\$1,850
- UM 12 1/2' 3 Pt. Field Cult. w/Rolling Basket...\$1,700
- UM 14 Ft. S Tine Field Cult. **SOLD** w/Bar & Rolling Basket.....\$2,300
- Yetter 15 ft. Rotary Hoe.....\$1,050
- Int. 55 Trailer, Chisel Plow, 7 Tooth.....\$1,050
- White 256, 13 Ft. Tra **SOLD** disc.....\$1,500
- JD 8300 Grain Drill 21x7 w/Grass Seed.....\$2,975
- Kverneland 5 Bt. Spring Reset Plow..... Call
- IH 700 4 bt auto reset, nice.....\$1,650
- White 598, Plow 5x18 Auto Rest, Variable Width.....\$2,950
- IH 45 Vibrashank Field Cult., 13' Pull Type...\$1,200
- IH 45 Vibrashank Field Cult., 8' Pull Type.....\$1,050
- Brillion 4R S-Tine Cult.....\$650

**FORAGE EQUIPMENT**

- JD 100 Blower, 540 RPM.....\$875
- NH 28 Blower.....\$975
- Fiat NH 790 Harv, Nice, Low Wear..... Call
- Ford NH 28 Blower.....\$1,300
- Gehl 970 Forage Wagon, 3 Btr. Roof, Tandem, Late Model, Nice.....\$5,800
- Fiat NH 360 N3, 3 Row N Corn Head.....\$5,100
- Gehl 3038 2 Row N Corn Head.....\$750
- Gehl HA1110 Hay Head.....\$750
- Gehl 1060 Harv., Tandem Axle, Electric Controls.....\$3,950
- FNH 790W Pickup Hd.....\$1,200
- NH 824 2R Corn Head.....\$1,700
- JD 3940 harv, manual **SOLD**.....\$2,200
- JD 3950 Harv. Elect. Controls.....\$4,900

**GRINDER MIXERS**

- Gehl 125 Hyd. Dr..... Call
- Gehl 100 Hyd. Dr. Scales w/Folding Auger, Nice.....\$4,850
- Gehl 100 Hyd. Dr. w/Scales.....\$3,100

**PTO GENERATORS & ALTERNATORS**



- Agro Power 25 KW on Trailer & PTO.....\$1,250
- Onan 25 KW PTO on cart.....\$1,775
- Winpower 35-75 KW, 1800 rpm.....\$2,450

**SKID LOADERS**

- '99 NH LX656 42 HP 442 Hrs.....\$10,500
- JD 260 69 HP, 320 Hrs.....\$17,900
- JD 6675 42 HP 1700 Hrs., Nice.....\$11,100
- JD 8875 61 HP w/1665 Hrs.....\$12,900

**MISC. EQUIPMENT**

- Dion 12 Ton Tandem, Running Gear.....\$900
- Frey #8030W QT Loader, Joy Stik Controls, Fits JD 2750.....\$1,850

 (1) 1991 Cat E110B Excavator, 26,000 lb., 8'6" Wide, 5146 Hrs 80% U/C Cab With Aux Hydra Serviced, Very Clean.....\$21,500	 <b>SOLD</b> 1990 Ford 555C Backhoe Loader Cab, 4x4, Ex-Hoe, 60% Tires, 5236 Hrs, Very Nice.....\$17,500	 1990 JCB 1550B, 4x4 Cab Skid Loader, 60% Tires, Nice \$15,500
 Cat 910 Wheel Loader, 4x4, Cab, Heat, Work Lights, Rebuilt Motor, 65% Tires, 1 25 Bucket.....\$14,500	 1989 Case 1845C Skid Loader 85% Tires, 3322 Hrs, Dirt Bucket, Clean \$9,800	 <b>SOLD</b> 1999 Bobcat 773 Skid Loader, 1750 Lb Lift, New Tires, Aux Hydra, 818 Hrs, Very Nice \$13,500

Rental Skid Loader or 3 Pt. H.D. Post Driver For Rent - Weekly or Monthly

**OUR NEW**

**"TAKE 150 DAYS SAME AS CASH"**  
On Used Equipment - See Dealer For Details

 3 Steiners To Choose From Starting At \$2,500	 Case Ingersoll 448 Big Wheel 48" Cut \$2,500	 Grasshopper 725g2 61" w/Vacuum Syste \$6,999	 Cub Cadet 1641 \$2,100 or Like New 2166 w/Bag..\$2,499
 Honda Owners LOOK New 6100 Robin Gen. Reg. \$1,699 Only \$799	 Yanmar 21 HP 4 WD Nice \$4,999	 Kubota FC2000 Diesel Front Cut 72" \$3,700	 Ford GT145 w/Loader & Mower \$1,800

All used units come w/30 day warranty.

**LAWN CARE EQUIPMENT CENTER, LLP**  
Martindale, PA (717) 445-4541  
See these machines in color on our website: www.lcequip.com

**Hydra Push Is Back**

**LEON - Manure Spreader**

**"Material Handling Excellence"**

**"Silver Spreader"® Series**

**Hydraulic Push-Off Technology**

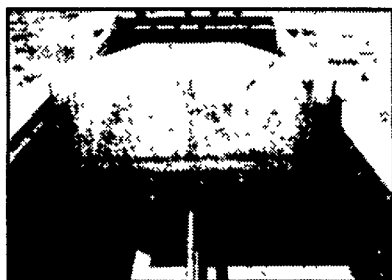


Model SS - 375  
Model SS - 425

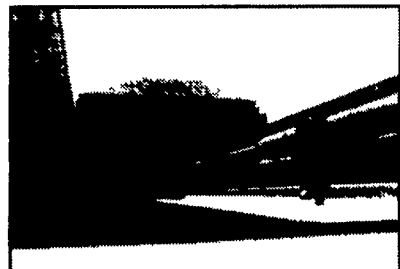


2 sizes and both in stock at Umbergers

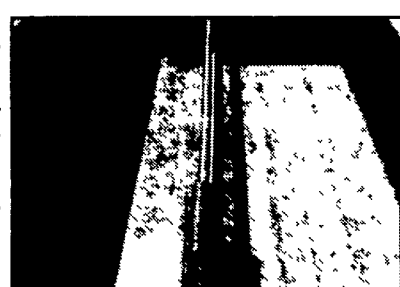
The "Heavy Duty Push Gate" is steel reinforced to prevent twisting or bending under the heaviest loads. Floor and side guides, ensure smooth movement. The push off unloading speed can be adjusted, and the precisely fitting push gate ensures the solid poly box is clean at the end of each load. Notice the standard top gate extension to assist in handling large heaped loads.



Leon "Hydraulic Push-Off Technology" is strong, steady, smooth, simple, trouble free, and reliable to guarantee the power needed to push the heaviest load. This technology eliminates the old fashioned approach to unloading which used apron chains, sprockets, shafts, idler slides, conveyer slats, etc. (developed in the last century) that are the heart of heavy maintenance costs and down time due to failure that are used on competitive machines.



The "Solid Poly Box" on the total floor and total sides is constructed from super slippery corrosion proof polyurethane plastic materials. It is not just a liner or surface coated plywood - but **SOLID POLY MATERIAL**. It eliminates any distortion when temperatures change and particularly eliminates manure freeze up problems in the winter months. Spreading is faster and easier in all weather conditions. The higher investment in these poly materials more than pays for itself in reducing corrosion, leakage, etc. Problems for the operator in the many years ahead.



**Umberger's of Fontana, Inc.**

8 miles E. of Hershey on Rt. 322, Box 545, Lebanon, PA 17042  
Phone: 717-867-5161 1-800-261-2106



Hours: Mon. thru Thurs. 7:30-6; Fri. 7:30-8 • Sat. 7:30-4