

SINCE 1936

**M.M. WEAVER & SONS, INC.**

MASSEY FERGUSON

Tractors And Combines

**CLAAS**  
Country

Meeting all your harvesting needs!

Leola, PA 17540 Phone: (717) 656-2321

Located: 4 miles West of New Holland on Rt. 23, 1-1/2 miles Northeast of Leola on the No. Groffdale Rd., 1 mile on the right, opposite Groffdale Mennonite Church.

**Weaver's Annual Auction - March 18, 2002**  
**Starting 8:30 AM**

**So Many Uses.  
So Many Ways  
to Save.**

**Come Look  
We Have  
In Stock**

**MF 7500 Articulated Wheel Loader.**

One of the most productive, easy-to-use articulated wheel loaders is now available with your choice of special flexible financing packages. See us for a test drive and your choice of these options:

**Waiver of interest for 9 months, or  
5.9% APR for 60 months**

\*Variable rates shown. Fixed rates also available. Financing subject to approval by AGCO Finance. Offers ends March 31, 2002.



**MASSEY FERGUSON**

Massey Ferguson® is a worldwide brand AGCO Corporation, Duluth, GA

**Blizzard  
VALUE**



**BIG WORK LOAD,  
SMALL PRICE TAG**

**MF 231S**

Today's farming conditions require a machine that is reliable in the field and a value to your wallet. The Massey Ferguson 231S is a perfect match.

The 42 hp MF 231S has standard features that help you get the job done quickly and efficiently. The transmission, chassis, hitches and other components are all built with the traditional quality and durability that has made MF a worldwide leader.

Compare the 231S to the competition. You'll see it delivers the most horsepower for the dollar. Stop in for a test-drive soon.



**THREE POINT  
POWER**



**MASSEY FERGUSON**

Massey Ferguson® is a worldwide brand AGCO Corporation, Duluth, GA

**USED COMBINES**

85 MF 860 4x4 2466 Hrs, Ser #19374	\$12,500
85 MF 860 4x4 Ser #19749, 5,000 Hrs.	\$11,500
81 MF 860 Ser #15125, 4,300 Hrs	\$8,000
79 MF 760 Ser #9899, 3,260 Hrs.	\$4,000
75 MF 750 Ser #5130	\$3,000
91 MF 8460 Ser #09402425, 2758 Hr	\$45,000
90 MF 8460 Hill Side Ser #9402540, 3774 Hr	\$45,000
90 MF 8460 Hill Side Ser #9402539, 2428 Hr	\$45,000
89 MF 8460 Hill Side Ser #9401998, 4026 Hr	\$35,000
82 MF 850 Ser #23681, 4600 Hr	\$7,000
79 MF 550 Ser #1739	\$11,000

**USED HARVESTERS**

00 New Holland FX38 Harvester, 4x4, Corn Cracker, 750 Cutter HR, 977 Engine, HR, Hyd Dump Kit, 10' Hay Head, 6 Row Corn Head	\$173,000
JD 6710 Harvester 4x4 New Corn Cracker 2448 Cutter HR 686 Independent Corn Head "Used One Year"	\$93,500
98 Claas 820 Harvester 4x4, Corn Cracker, 1800 Cutter HR, 00 Ru 450 Independent Corn Head	\$110,000

Gehl 1265 Harvester, Pull Type, 3 Row, 7' Hay	
New Holland 900 Harvester, 2 Row Hay	\$16,500
790 New Holland Harvester 2 Row Corn With Corn Cracker	\$11,900
00 Gehl 1275 Pull Type Harvester, Crop Processor, Metal Detector, 3 Row Corn Hay Head	\$20,000
Gehl 1060 Pull Type Harvester, No Heads	\$4,500
Fox 6350, 4x4 SP Harvester, 2260 Hrs, 3 Row Corn, Hay Head	\$8,500
00 Claas 880 Harvester, 4x4, SN#49103553, Auto Lube, Corn Cracker, OD Trans, Hyd for Dump Wagon, 12' Hay Head, 6-Row Independent Corn Head	\$229,000
99 JD 6750 Harvester, 4x4, 365 HP, Corn Cracker, 30 5R32 Tires, Hyd. for Dump wagon, Auto Lube, 1022 Cutter Hours, 1310 Engine Hours, 10' Hay Head, 6-Row Independent Corn Head	\$155,000
95 Claas 840 Harvester, 4x4, 381 HP, 24 5R32 Tires, Corn Cracker, 1352 Cutter Hours, 2413 Engine Hours, Claas 10' Hay Head	\$144,000
96 Claas 860 Harvester, 4x4, Auto Lube, 435 HP, 30 5R32 Tires, Corn Cracker, Hyd for Dump Wagon, 1321 Cutter Hours, 1856 Engine Hours,	

Claas 12' Hay Head, 6-Row Independent Corn Head	\$165,000
97 Claas 880 Harvester, 2WD, 503 HP, Auto Lube, 24 5R32 Tires, 1358 Engine Hours, 1024 Cutter Hours, Claas 10' Hay Head	\$139,000
JD 6710 Harvester 4x4 Corn Cracker, 6 Row - 10 Hay, 1600 Cutter HR	\$94,000

**USED TRACTORS**

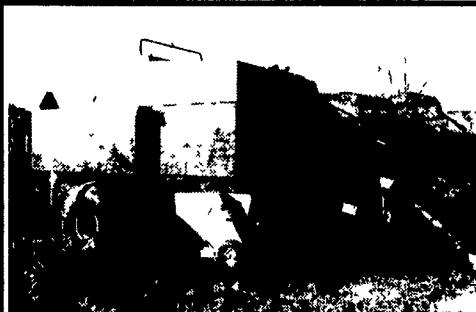
(2) JCB 185-65 4x4 Tractor, 180 HP, 40 MPH	\$60,000
Case IH 7140 4x4 Tractor Duals, 197 HP	\$38,000
89 MF 1020 4x4 Hyd, Power Steering, Turf Tires, 1933 Hr	\$6,900
MF 1010 gear drive, 4'mower	\$4,300
MF 8160 4x4 Cab, 180 HP	\$69,000
2 - MF 3650 4x4, Cab, 130 HP	\$29,000
MF 4253 2WD, Platform, Low Hrs 85HP	\$25,000
2 - MF 1155 2WD, Cab, 140 HP	\$8,000
Ford 4000 gas	\$4,600
JD 8400 4x4 Tractor, 225 HP, 18 4R46 with Duals, 4 Remote Hyd Outlet, Front Weights and Rear Wheel Weights, 1550 Hr	\$85,000
Farmall H NF, New Tires, Tire Chains, front blade	\$2,200

**RENTAL AND DEMO MODEL TRACTORS**

MF 8160 4x4, 180 HP, Duals	\$72,000
MF 390T - 2WD, 18 Speed Trans 80 HP	\$27,000
<b>MANURE &amp; FEEDING EQUIPMENT</b>	
Lucknow 285 TMR Mixer Wagon	\$4,900
New Holland 795 Manure Spreader	\$4,800
<b>HAY EQUIPMENT</b>	
New Holland 855 Round Baler 66"x66"	\$7,500
2 New Holland 853 Round Balers	\$6,000
MF 560 Round Baler	\$2,500
New Idea 456 Round Baler	\$2,000
99 Claas 4x5 Round Baler Wide Pickup, Net-Twine	Just In
New Idea 4845 Round Baler 5x4 Twine	\$5,000
Claas 2200 Large Sq Baler, 27"x48"	DEMO \$57,000
Gehl 2240 Center Pivot 12' Haybine	\$3,200
E-Z Trail Bale Basket	NEW
Gehl Disc Mower Conditioner, 10'	\$2,500
Gehl 2160 Haybine, 10'	\$1,200
98 New Holland 590 Sq Baler 35"x32"	\$38,000
<b>MISC. EQUIPMENT</b>	
MF 820 Disk 22" With Buster Bar	\$4,200
1360 Case IH Grnder Mixer w/EL Scales, like new, used 6 mo	\$13,900
JD 1008 Rotary Cutter 10' Cut	\$2,500
Brady 12 Ft Flail Shredder	\$2,800



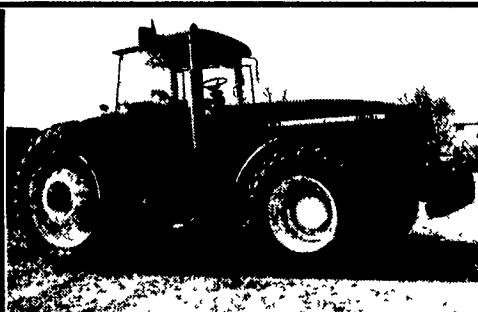
01 JD 100 Sq. Baler, 4000 Bales  
**\$38,000**



98 New Holland 590, Sq 35"x35"  
**\$38,000**



(2) JCBs Just Traded



JD 8400 4x4, 225 HP, 18.4R46  
With Duals, 4 Remotes **\$85,000**