

BINKLEY & HURST BROS. INC. HAS A GOOD SELECTION OF QUALITY PRE-OWNED!

FINANCE RATES ARE LOW! A GREAT TIME TO PURCHASE!

Choose From 3 Case IH 5140 Maxxum Tractors - 2 MFD One with Loader, One 2WD Case IH 5140 MFD Cab A.H. Power Shift



Approx 100 HP, Bar Axle 1990 Model (UT 4843) **Serviced, Ready to Work \$24,800**

5140 MFD Cab, Air, Heater, Power Shift with Model 520 Case IH Loader, 1993 Model (UT 4863)

2WD Case IH 5140 Cab, Air Heater, 1990 Model, 3460 Hrs, Air Seat, **Serviced, Ready to Work (UT 4853)**

Gehl Model 5635 SX



60 HP Oil Cooled Diesel, 1998 Model with Approx 1350 Hours with New 12 00x16 5 Galaxy Tires (UT 4850) ~~\$16,000~~ **\$14,500**

Gehl 4635 SX



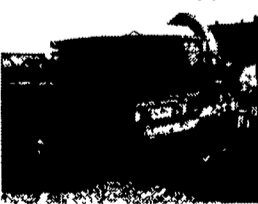
Approx 698 Hours, 1999 Model, Like New with 65" Wide Bucket (UT 4856) **Only \$14,900 \$14,500**

Case 1840 Unloader



Approx 1800 Hours with Aux Hyd Outlets, Self-Leveling Loader, 50 HP Case Cummins Diesel (UT 4577) **No Trade Special \$10,900**

Agri Metal Model 5600 Round Bale Chopper



Hyd Feed Control w/Blower, Discharge to Left or Right (UM 4986)

Van Dale TMR Mixer



210 Cu Ft.

Several Used MX Maxxum Tractors Available at Binkley & Hurst Bros. Inc. Ask About Low Rate Financing!



Late 1998 MX170, as shown with Duals, also Optional Road Gears, 2275 Hours, Dyno Tested 150 HP, 12 Front Weights, Great Visibility, Shuttle Reverser & Power Shift (UT 4788) **\$58,900**

Model MX120 MFD Cab Shuttle & Power Shift, 2281 Hours with Large Michelin Radial Tires, Front & Rear Similar to 23 1x38 Radial & 18 4x28 Fronts, Front Fenders, Rated 105 HP, 2 Remote Hyd Outlets, Loaded (UT 4867) **\$43,000**

Super Deal New Holland TN65



2000 Model 2WD, 47 HP with Approx 450 Hrs (UT 4879) **Ask for Rick!**

Gehl Model 5625



1993 Model, 25 HP Diesel with Aux Hyd Outlets, 72" Bucket, Nice Machine (UT 4554) ~~\$16,500~~ **Now Only \$11,900**

The Compact Handler JCB 525B



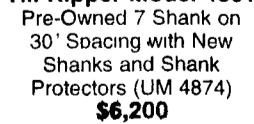
5500 lb Lift, 22' Height, Shuttle Reverser, with Cab (UT 4880)

Gehl 4500 with Ford Water Cooled Engine



With Self Leveling and 65" Bucket, Good Running Machine (UT 4819) **\$4,500**

Used Sunflower Deep Till Ripper Model 4301



Pre-Owned 7 Shank on 30" Spacing with New Shanks and Shank Protectors (UM 4874) **\$6,200**

Sunflower 13' Foot Flex Disk Harrow



\$7,500

Case IH Maxxum 5220



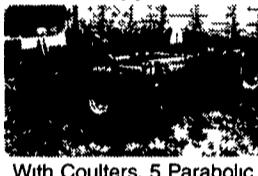
1993 Model, Approx 80-90 HP Rating with Cab & MFD, Power Shift & Shuttle Reverser, 4 Cyl Turbo Case-Cummins Diesel, 16 9x38 Rear Tires & 14 9x24 Fronts, 2 Remote Hyd. Outlets, 4064 Hours (UT 4837) **NO TRADE \$21,800**

Case 1840 Diesel



1993 Model, 10 00x16 5 Tires, 75% Good (UT 4744) **\$10,000 OBO**

Case IH 2500 3 Pt. Ripper



With Coulters, 5 Parabolic Shanks, Gauge Wheels (UM 4913) **\$7,250**

Case D100 XR Backhoe Attachment



Joy Stick Controls, Wing Stabilizers, 15" Bucket (UM 4943) **\$4,900**

Case IH Magnum 7140 MFD, 18 Speed Power Shift



18 4x42 Radials with Matching Duals and 18 4x26 Front Tires, 3 Hyd Outlets, 18 Front Weights, Dyno Test 232 HP with 540-1000 Dual Shaft PTO **\$34,500**

With Single Large 1000 Shaft PTO (UT 4800) **\$32,500**

Gehl 6635 DXT with 2-Speed Power Shift and Aux. High Flow Hydraulics



Large 14 00x17 5 High Traction Tires, Only 932 Hours (UT 4803)

Oswalt TMR 400 Cu Ft Trailer Mixer with Scales, New Augers & Liner (UM 4906) Ask for Jim! \$8,500

Case IH 2394 ROPS Open Station



Rated 162 HP with 1000 RPM PTO Rebuilt Transmission, New 20 8x38 Tires (UT 4844) **\$12,900**

1990 Case 1840 Unloader



63" Utility Bucket (UT 4752) **Priced To Go!**

Ford 4x4 5640 SL MFD, Only 886 Hours



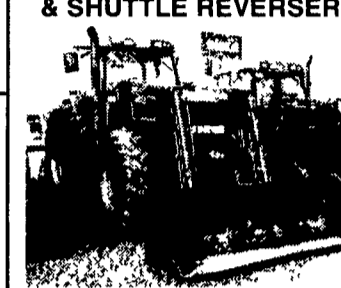
1994 Model, 16 9x30 Rears 70%, 11 2x24 Fronts 50%, 540 PTO, Dual Hyd Outlets, 4 Front Weights (UT 4854) **\$17,500**

CASE IH MX240 TRACTOR, RATED 205 HP



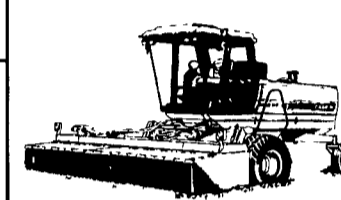
Huge Tires! Ideal for Highway Manure Tanker Work, Etc (UT 4849)

CASE IH MX120 4X4, CAB POWER SHIFT & SHUTTLE REVERSER, RATED 105HP



2625 Hours, 2 Remotes, 20 8x38 Firestone Radials & 16 9x28 Front Tires with Case IH L300 Loader & 8 Foot Bucket (UT 4851) **Serviced, Ready for Work! \$44,800**

SUPER DEAL ON LOW HOUR SELF PROPELLED DIESEL CASE IH 15 FOOT CUT DISC MOWER COND.



Only 1360 Hours, Case Cummins Powered, Header Cut 15'3" with Gauge Wheels (UT 4797) **Priced to Sell!**

8850 HP WINDROWER Ask About 4 Month Waiver or 5.4% Financing Don't Miss This One!

Nice New Holland #8 Crop Carrier Save \$500



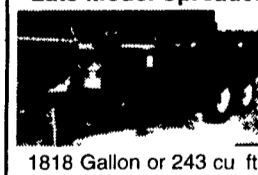
Tandem Axle Wagon (UM 4810)

Krause 2400 - Good Heavy Duty Rock Flex



Hyd Fold 20' Rock Flex Wing Disk w/Packer Hitch & Hoses (UM 4878) A Lot of Disk for the Money! **\$7,500**

Gehl Scavenger 1315 Late Model Spreader



1818 Gallon or 243 cu ft **Only \$7,000** Tow Away Discount \$\$ Call for Blow Out Pricing! \$\$ **Now Only \$6,500**

John Deere 12 Foot Cut Disk Harrow



With Good Blades, with Dual Transport Wheels (UM 4713) **\$2,500**

1986 Nice Clean Fiat Allis FR11 Articulated Loader



12-Ton Weight Class, Rated 125 HP Turbo Diesel with 4-Speed Power Shift & Reverser, ACS Quick Coupler, 2-3/4 Yd Bucket and Pallet Forks, Center Pins & Loader Tight, with Cab and Heater and Work Lights, Engine Overhaul Just Done, Lift Height to Bucket Pin 11'10", Super Clean Machine (UT 4810) **We Can Provide Service After The Sale! Ask for Leonard or Dean New Motor, Tight Machine \$19,800**

Deep Till Zone Builder Ripper with Coulters



6 Shank on 30" Spacing with Optional Coulters to Cut the Residue, In Good Condition (NE 8663) Was \$7,950 **NOW \$6,990**

Case IH 9 Foot Mower Conditioner



(Sold New) Model 8330, Nice Machine: **\$2,950**

MISCELLANEOUS TILLAGE & ATTACHMENTS

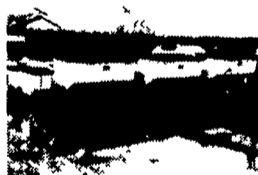
CASE IH 8330 9' Pull Type Mower Conditioner (We Sold New), Nice \$2,950

UM 4879 Pull Type Wing Fold MCKEE 36-TINE FIELD CULTIVATOR 12' Center, 3 Wings, Good Frame, Good Shovels, Rolling Leveler Basket, Gauge Wheels on Center Section and Wings **\$1,995**

UM 4581 (2) GANDY INSECTICIDE ROW UNITS w/Rubber Rotor (12 Volt) ... **\$100 EA.**

SEE BINKLEY & HURST BROS. INC. THE TIME TO BUY A USED OR PRE-OWNED RECONDITIONED PLANTER IS NOW!

Really Nice! John Deere 7000 6-Row Conservation Planter, Reconditioned Last Year



Unit Mount No Till, Dry Fert, Insecticide, Population Monitor, Lots of Value (UM 4969) **Only \$4,900**

John Deere 7200 12-Row Folding Narrow Transport Planter



12-Row 30" Planter with Liquid Fertilizer, No Till (UM 4811)

UM 4638 KINZE 2000 6 Row Corn & 11 Row Bean, No Till, w/ Interplant Row Units, KM 1000 Monitor, Reconditioned, High Quality **\$14,900**

UM 4661 KINZE Model 2500, Swing Frame, 8 Row with Interplant, No-Till, KM 3000 Monitor, Reconditioned (Very Good) **\$26,900**

UM 4723 JOHN DEERE 7000, 6 Row No-Till, Dry Fert with Cross Fill Auger, Monitor & Markers (Nice) **\$6,900**

UM 4861 JOHN DEERE 7240 6-Row Vacuum Planter with Liquid Fertilizer

UM 4851 KINZE 2500 6-Row Swing Frame Narrow Transport Planter **\$19,800**

UM 4828 KINZE MODEL 2500 8 Row N 30" with Interplant Units, No Till with Cast V Closing Wheels, Hopper Toppers, DJ 1000 Monitor with Keaton Firmers

John Deere 7000 Conservation 8-Row With Liquid Fert.



Squeeze Pump, Double Disc Openers, Unit Mounted No-Till, Monitor, Insecticide (UM 4946) **\$10,500**

Kinze 2500



8x30 Liq Fert, Monitor 15 Interplant Kit, Frame Coulters, Swing Frame Narrow Transport, Loaded, Very Good (UM 4661)

BINKLEY & HURST BROS. INC.

(717) 626-4705

133 Rothsville Station Rd. P.O. Box 0395, Litzitz, PA 17543-0395 Located 1/2 Mile North of Rothsville

1-800-414-4705 Fax 717-626-0996

