

# GOOD YEAR

#1 in Tires

# THE RIGHT TIRES FOR THE WAY YOU FARM

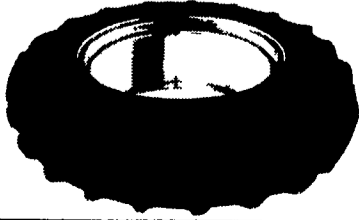


## (R1) DURATORQUE ECONOMY BIAS-PLY

Priced with Long/Long Bar

83/24 4 Ply TT **\$135**  
 95/24 4 Ply TT **\$156**  
 14.9/28 6 Ply TT **\$236**  
 15.5/38 6 Ply TT **\$259**

Other Sizes Available



## (R1) DYNA TORQUE RADIAL

Revolutionary High Tractor 3-Pitch Lug Design

13.6R28 TL 3\*\*\* **\$443**  
 14.9R28 TL 3\*\*\* **\$549**  
 18.4R38 TL 1\* **\$582**  
 20.8R38 TL 1\* **\$798**

Other Sizes Available

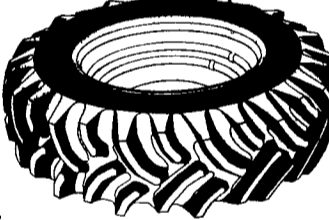


## (R1) DYNA TORQUE II BIAS-PLY

For Excellent Drawbar Pull, Even High-Torque Tractors

11.2/24 4 Ply TT **\$163**  
 12.4/24 4 Ply TT **\$197**  
 14.9/24 6 Ply TT **\$282**  
 16.9/30 6 Ply TT **\$287**

Other Sizes Available



## (R1) POWER TORQUE

Established Tread Design For Tough Service

6-12 4 Ply TL **\$42**  
 72-16 4 Ply TL **\$79**  
 83-16 6 Ply TL **\$94**  
 95-16 6 Ply TL **\$125**

Other Sizes Available



## (R1) ULTRATORQUE RADIAL

Cuts Through Mud, Dirt, And All Kinds Of Soil

480/80R 38TL **\$582**  
 420/90R 30TL **\$635**  
 380/85R 34TL **\$655**  
 480/80R 42TL **\$746**

Other Sizes Available

GOODYEAR'S ULTRATORQUE RADIAL LINE-UP Replaces Size  
 380/85R28 149R28  
 420/85R28 169R28  
 380/85R30 149R30  
 420/85R30 169R30  
 380/85R34 149R34  
 480/85R34 184R34  
 480/85R38 208R38  
 480/80R42 184R42  
 520/85R42 208R42  
 380/90R46 149R46  
 420/80R46 169R46  
 480/80R46 184R46



## (I-1) FARM UTILITY

• Outstanding flotation  
 • Easy steering from the heavy grooved ribs

Rib Implement Tire Easy Operation For Many Types of Equipment

11L-15 8 PLY TT **\$47**  
 760-15 8 PLY TT **\$49**  
 95L-14 8 PLY TT **\$53**  
 12.5L-15 8 PLY TT **\$68**

Other Sizes Available



## TRI RIB HD

3 Rib Designed Improved Steering In Loose, Cultivated Soil

1000-16 8 Ply TT **\$93**  
 1100-16 8 Ply TT **\$106**

Other Sizes Available

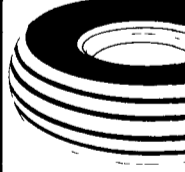


## (F-1) FARM HIGHWAY SERVICE

• Designed for Implements & Wagons  
 • D.O.T. Approved for Highway Speed

95L-15FI-6 Ply TL **\$71**

Other Sizes Available



## (R4) IT 515 HARD SURFACE

Solid Performance on Rock-Hard Ground

17 5L-24-8 Ply TL **\$332**

Other Sizes Available



## LIGHT TRUCK ADVENTURE

Your Choice

**\$13900**



## ATV TIRES

• **TRACKER LINE-UP** 1/2" Tread Depth Avg.  
 • **RAWHIDE LINE-UP** 3/4" Tread Depth Avg.  
 • **MUD RUNNER LINE-UP** 1" Tread Depth Avg.



## (F2) HEAVY DUTY HI-RIB (PREMIUM)

6 Sizes Available

**KELLY'S TIRES** (R-1) POWER MARK

2 Sizes Available



## (R4) IT 525 INDUSTRIAL BIAS

Design For Backhoe/Loader Operation

17 5L-24-8 Ply TL **\$289**



## CALL 1-800-FARMTIRE. GOOD YEAR As American As Farming.

Check our Web Site @ [www.Goodyear.com](http://www.Goodyear.com)

Click on "Tires" - Click on "North America Tire" - Click on "Farm & Industrial"

**Horlacher & Sherwood**  
 On The Farm Service  
 153 E. Tioga  
 Tunkhannock, PA  
**570-836-1116**

**Bastian Tire Sales**  
 On The Farm Service  
 R2603 Reach Road  
 Williamsport, PA 17701  
**1-800-362-5279**

**Mar-Bar Tire Service**  
 On The Farm Service  
 4285 Hanover Rd.,  
 Hanover, PA 17331  
**717-633-6412**

**Dices Tire Shop**  
 On The Farm Service  
 1421 Lincoln Way  
 Chambersburg, PA 17087  
**717-264-9312**

**Bastian Tire Sales**  
 On The Farm Service  
 Rt 11 & 15  
 Shamokin Dam, PA 17876  
**1-800-326-9465**

**Donald B. Rice Tire Co.**  
 On The Farm Service  
 1420 Tilco Drive,  
 Frederick, MD 21701  
**1-800-407-0556**

**Zimmerman Farm Service**  
 On The Farm Service  
 School Road  
 Bethel, PA 19507  
**717-933-4114**

**BHM Farm Equipment**  
 RD 1 Rt. 934 North  
 Annville, PA 17003  
**717-867-2211**

**Lebanon Valley Imp. Co.**  
 On The Farm Service  
 700 E. Linden St.,  
 Richland, PA 17087  
**717-866-7518**

**Neatons Tire**  
 On The Farm Service  
 25 East Ave  
 Easton, MD 21601  
**1-800-317-6152**

TWO REASONS YOU CAN COUNT ON GOODYEAR

Goodyear's New Agricultural Warranties

See Your Local Goodyear For Full Details.

