

GOOD YEAR

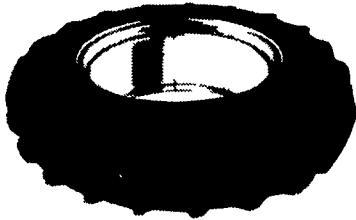
#1 in Tires

THE RIGHT TIRES FOR THE WAY YOU FARM

(R1) DURATORQUE ECONOMY BIAS-PLY

Priced with Long/Long Bar

83/24 4 Ply TT	\$135
95/24 4 Ply TT	\$156
14.9/28 6 Ply TT	\$236
15.5/38 6 Ply TT	\$259



Other Sizes Available

(R1) DYNA TORQUE RADIAL

Revolutionary High Tractor
3-Pitch Lug Design

13.6R28 TL 3***	\$443
14.9R28 TL 3***	\$549
18.4R38 TL 1*	\$582
20.8R38 TL 1*	\$798

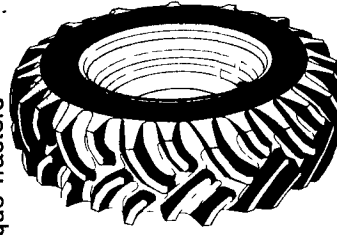


Other Sizes Available

(R1) DYNA TORQUE II BIAS-PLY

For Excellent Drawbar Pull,
Even High-Torque Tractors

11.2/24 4 Ply TT	\$163
12.4/24 4 Ply TT	\$197
14.9/24 6 Ply TT	\$282
16.9/30 6 Ply TT	\$287



Other Sizes Available

(R1) POWER TORQUE

Established Tread Design
For Tough Service

6-12 4 Ply TL	\$42
72-16 4 Ply TL	\$79
83-16 6 Ply TL	\$94
95-16 6 Ply TL	\$125



Other Sizes Available

(R1) ULTRATORQUE RADIAL

Cuts Through Mud, Dirt,
And All Kinds Of Soil

480/80R 38TL	\$582
420/90R 30TL	\$635
380/85R 34TL	\$655
480/80R 42TL	\$746



Other Sizes Available

GOODYEAR'S
ULTRATORQUE
RADIAL LINE-UP

Replaces Size	380/85R28	149R28
	420/85R28	169R28
	380/85R30	149R30
	420/85R30	169R30
	380/85R34	149R34
	480/85R34	184R34
	480/80R38	184R38
	520/85R38	208R38
	480/80R42	184R42
	520/85R42	208R42
	380/80R46	149R46
	420/80R46	169R46
	480/80R46	184R46

• Outstanding flotation
• Easy steering from the heavy grooved ribs

Rib Implement Tire
Easy Operation For Many Types
of Equipment

11L-15 8 PLY TT	\$47
760-15 8 PLY TT	\$49
95L-14 8 PLY TT	\$53
12.5L-15 8 PLY TT	\$68

Other Sizes Available

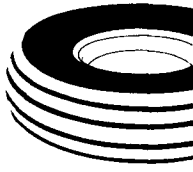


TRI RIB HD

3 Rib Designed Improved Steering In
Loose, Cultivated Soil

1000-16 8 Ply TT	\$93	1100-16 8 Ply TT	\$106
---------------------	-------------	---------------------	--------------

Other Sizes Available



• Designed for Implements & Wagons
• D.O.T. Approved for Highway Speed

\$71

95L-15F1-6 Ply TL

Other Sizes Available

ATV TIRES

- **TRACKER LINE-UP**
1/2" Tread Depth Avg.
- **RAWHIDE LINE-UP**
3/4" Tread Depth Avg.
- **MUD RUNNER LINE-UP**
1" Tread Depth Avg.



(F2) HEAVY DUTY
HI-RIB (PREMIUM)
6 Sizes Available



KELLY'S TIRES
POWER MARK
2 Sizes Available

(R4) IT 515 HARD SURFACE

Solid Performance on Rock-Hard Ground
17.5L-24-8 Ply TL

\$332

Other Sizes Available



(R4) IT 525 INDUSTRIAL BIAS

Design For Backhoe/Loader
Operation
17.5L-24-8 Ply TL

\$289



LIGHT TRUCK ADVENTURE

CONQUEST AP

Your Choice

\$139.00



LT235/85R16
Load Range E-10 Ply

**WORKHORSE XG
RADIAL**



CALL 1-800-FARMTIRE. GOOD YEAR AS AMERICAN AS FARMING.

Check our Web Site @ www.Goodyear.com

Click on "Tires" - Click on "North America Tire" - Click on "Farm & Industrial"

Bastian Tire Sales
On The Farm Service
Rt. 11 & 15
Shamokin Dam, PA 17876
1-800-326-9465

Zimmerman Farm Service
On The Farm Service
School Road
Bethel, PA 19507
717-933-4114

Lebanon Valley Imp. Co.
On The Farm Service
700 E. Linden St.,
Richland, PA 17087
717-866-7518

Neatons Tire
On The Farm Service
25 East Ave
Easton, MD 21601
1-800-317-6152

BHM Farm Equipment
RD 1 Rt. 934 North
Annville, PA 17003
717-867-2211

Donald B. Rice Tire Co.
On The Farm Service
1420 Tilco Drive,
Frederick, MD 21701
1-800-407-0556

Mar-Bar Tire Service
On The Farm Service
4285 Hanover Rd.,
Hanover, PA 17331
717-633-6412

Sherry & Sherry
On The Farm Service
153 E. Tioga
Tunkhannock, PA
570-836-1116

Bastian Tire Sales
On The Farm Service
R2603 Reach Road
Williamsport, PA 17701
1-800-362-5279

H&F Tire Service
On The Farm Service
1834 Lincoln Hwy. East
Lancaster, PA 17602
1-800-451-6710

Dices Tire Shop
On The Farm Service
1421 Lincoln Way
Chambersburg, PA 17087
717-264-9312

TWO REASONS YOU CAN
COUNT ON GOODYEAR
Goodyear's New
Agricultural Warranties
See Your Local Goodyear For Full Details

