

Leesport Livestock Auction

Leesport, Pa.
February 20, 2002

Report Supplied By USDA

CATTLE 239 (PDA) (Supply included 98 steers & heifers, 98 cows, 10 bulls and 33 feeder cattle) Compared with last week's sale steers beef type mostly steady with Holsteins 1 00 to 2 00 higher, cows Breakers 2 00 to 4 00 lower, Boners and Lean cows 50 to 1 50 lower, heifers steady to 1 00 lower, bulls active, 1 00 to 3 00 higher instances of 7 00 higher

STEERS Choice 2-3 1040-1450 lbs 69 25-75 00, return to feed 67 00-72 50, Select 1-3 63 00-70 00, couple Standard 1-2 47 00 & 57 25

HOLSTEIN STEERS Choice 2-3 1280-1640 lbs 60 00-63.25, return to feed 57 00-61.00, Select 1-2 56.75-59 75, Standard 1-2 43 75-58 00.

HEIFERS Choice 2-4 1075-1305 lbs 67 25-69 00 with one to 73 75, Holsteins 45 00-60.25, Select 1-3 57 00-67 50, one Standard 1-2 55 50

COWS Breakers 75-80% lean 38.00-41 25, Boners 80-85% lean 38 00-44 25, Lean 85-90% lean 39 00-43 50 Shells 38 00 and down

BULLOCKS one Choice 2-3 71 00, couple Select 1-3 63 00

BULLS Yield Grade 1 1135-2250 lbs 55 00-57 50, Yield Grade 2 1595-2285 lbs 55 00-57 50

FEEDER CATTLE STEERS Large 2 575-860 lbs 65 00-71 00, Large 3 355-380 lbs Holsteins 55 00-85 00, 655-955 lbs Holsteins 55 00-64 00, HEIFERS one Medium 2 570 lbs 56 00, BULLS couple Medium 1 345 & 445 lbs 80 00 & 85 00, Medium 2 460-790 lbs 60.00-77 50, one Large 3 350 lbs Holstein 67 50, 560-890 lbs Holsteins 59.00-65 00, one Small 2 62 50

CALVES 140 Vealers steady VEALERS Standard and Good 75-105 lbs 45 00-75 00, Utility 60-85 lbs 10 00-37 50

FARM CALVES: Holstein bulls steady to 5 00 higher, Holstein heifers steady No 1 Holstein bulls 90-120 lbs

130 00-160 00, No 2 80-120 lbs 90 00-142 50, No 2 Holstein heifers 60-105 lbs 100 00-210 00

Beef type bulls and heifers 65-115 lbs 75 00-170 00

HOGS 11 BARROWS AND GILTS couple 45-50% lean 250 lbs 38.00, couple 40-45% lean 220 lbs 41 00

SOWS one 1-3 350 lbs 28 00, one 550 lbs 29 00, Medium 170-185 lbs 40 00

FEEDER PIGS 33 1-3 60 lbs 67 50, 95-115 lbs 50.00-57 50, 150-180 lbs 35 00-37 50 — per cwt

SHEEP 40 Slaughter lambs 3 00 to 5 00 lower **SLAUGHTER LAMBS** Choice 70-100 lbs 100 00-117 50, 105-125 lbs 95.00-112 50, 135-145 lbs 80 00 84.00

SLAUGHTER SHEEP 20 00-52.00, Yearlings 70.00

GOATS 12 (All sold by the head) One Large Billy 9 00, one Wether 117 50, couple Medium 70 00 & 85 00, Large Kids 25 00-28 00

Middleburg Livestock Auction

Middleburg, Pa.

Tuesday, February 19, 2002

Report Supplied By USDA

CATTLE 427 (PDA). (Supply included 190 steers and heifers, 145 cows, 13 bulls and 79 feeder cattle) Compared with last week's sale steers steady except Holsteins 1 00 to 1 50 higher, cows 1 00 to 1 50 lower, heifers steady, bulls steady to 2 00 lower

STEERS High Choice and Prime 2-4 1200-1460 lbs 74.50-76.00, Choice 2-3 1100-1480 lbs 70 00-74 75, 1500-1600 lbs 67 00-71 75, Select 1-3 66 00-71 00, Standard 1-2 55.00-66.50

HOLSTEIN STEERS High Choice and Prime 2-3 1170-1575 lbs 63 50-67 00, Choice 2-3 1150-1695 lbs 58 25-63.25, Select 1-2 53 00-58 50, few Standard 1-2 49 75-52 25

HEIFERS few High Choice and Prime 2-4 1165-1265 lbs 74.00-74.75, Choice 2-4 1100-1460 lbs 68.50-73.50, Select 1-3 66.50-70.00, Standard 1-2 54 50-64.50

COWS: Breakers 75-80% lean 39.50-

44 00, Boners 80-85% lean 38.00-44.00 with a few low dressing down to 35 00, Lean 85-90% lean 36 00-44 75 Shells 35 00 and down

BULLS Yield Grade 1 1050-2145 lbs 56 00-59 25, Yield Grade 2 1100-2340 lbs 45 00-55 00

FEEDER CATTLE STEERS Medium and Large 1 500-685 lbs 72.00-83 00, late sale 1100-1165 lbs 68.00-72 00, few Medium and Large 3 300-450 lbs 62.00-82.00, 500-655 lbs 67 00-70 50, 750-975 lbs 57 00-69.00; HEIFERS few Medium and Large 3 450-470 lbs 71.00-74 00, Medium and Large 2 650-710 lbs 63 50-68 50, few Medium and Large 3 650-695 lbs 51 50-57 00, BULLS couple Medium and Large 1 545 & 980 lbs 57 50 & 63 50

CALVES 220 VEALERS Standard and Good 70-100 lbs 45.00-67 00, Utility 60-80 lbs 10.00-30.00.

FARM CALVES: Holstein bulls steady to 5 00 lower, Holstein heifers steady No 1 Holstein bulls 90-125 lbs 130 00-155 00, 80-90 lbs 120.00-135.00, No 2 80-125 lbs 75 00-137.00; No 1 Holstein heifers 95-100 lbs 560 00-695.00, No 2 75-100 lbs 230.00-470 00.

Few beef type bulls and heifers 85-115 lbs 95 00-175 00

HOGS 71 ..Barrows and gilts steady. BARROWS AND GILTS 49-54% lean 240-280 lbs 41.00-46.00, 45-50% lean 245-275 lbs 37 25-43 00, few 40-45% lean 300-405 lbs 39.50-41.50

SOWS 1-3 290-490 lbs 20.00-29 00, 500-585 lbs 26.50-32.00 mostly 30 00-32.00.

BOARS. couple 640 & 725 lbs 14 00, 220-295 lbs 23.25-24.00

FEEDER PIGS 19 Few 1-3 35-50 lbs 30.00-46.00, few Utility 40-55 lbs 5 00 — per head.

SHEEP 14...SLAUGHTER LAMBS: one Choice 40 lbs 109.00, couple 60 & 70 lbs 79.00 & 81.00, few Good and Choice 40-70 lbs 50.00-70.00. **SLAUGHTER SHEEP:** few 43.00-44.00.

GOATS 14...(All sold by the head). Few Large Billies and Wethers 82.00-115.00, one Medium Billy 77.00, Large Kids 30.00-67.00, Small 20.00-23 00.

Five-Area Weekly Average Direct Slaughter Cattle

St Joseph, Mo., Feb 18, 2002 - USDA Market News Service

Sales in Texas/Oklahoma, Kansas; Nebraska; Colorado, and Iowa/Minnesota Feedlots for Week Ending Sunday, February 17, 2002

CONFIRMED SALES 183,493, Week Ago 191,182

LIVE BASIS SALES: SLAUGHTER STEERS

	Head Count	Weight Range	Price Range	Avg. Weight	Avg. Price
Over 80% Choice	2,555	882-1,600	70 00-73 00	1,367	71 50
65-80% Choice	5,023	882-1,600	70 00-73 10	1,347	71 92
35-65% Choice	38,630	840-1,650	69 00-72 85	1,262	71 93
1-35% Choice	4,248	900-1,500	69 00-72 50	1,224	71 89

SLAUGHTER HEIFERS

Over 80% Choice	3,758	1,000-1,550	71.00-73 25	1,268	72 23
65-80% Choice	7,987	900-1,525	70 50-72 50	1,255	72 08
35-65% Choice	31,198	850-1,470	70 00-72 50	1,141	71 96
1-35% Choice	1,153	850-1,350	72 00-72 25	1,122	72.05

DRESSED BASIS SALES:

SLAUGHTER STEERS

Over 80% Choice	3,815	625-1,048	111 00-116.50	882	114.39
65-80% Choice	15,874	466-1,113	110 00-115.00	851	114 09
35-65% Choice	12,736	508-1,073	110.00-115.00	830	113 66
1-35% Choice	156	514- 920	111 00-111 00	717	111 00

SLAUGHTER HEIFERS

Over 80% Choice	1,607	546-1,022	112.00-115.00	805	113.91
65-80% Choice	17,812	483-1,048	110.00-115 00	789	113 99
35-65% Choice	17,050	483-1,048	110 00-114 25	776	113.69
1-35% Choice	617	547- 957	113.00-114.00	750	113.11

Weekly Accumulated Weighted Averages (Beef Breeds):

	Head Count	Avg. Weight	Avg. Price
Live Steer	50,456	1,272 9	71.90
Live Heifer	44,096	1,172.0	72 01
Dressed Steer	32,582	845.60	113.95
Dressed Heifer	37,097	783.10	113 84

Week Ago Weighted Averages

Live Steer	53,834	1,275.7	71.66
Live Heife	47,768	1,178 5	71.74
Dressed Steer	37,578	851.5	112.88
Dressed Heifer	31,469	783.7	112.72

Livestock Cooperative Auction Market Of North Jersey

Hackettstown, N.J.

Report Supplied by Auction

Tuesday, February 20, 2002

CALVES .17-6.00.

COWS 15- 46½.

EASY COWS 29- 44½.

FEEDERS 300-600 LBS .47-1.00.

HEIFERS 42½-.71

BULLS .52½-.72.

STEERS .40-.78.

HOGS .32-.47.

ROASTING PIGS EACH 22.00 EA.

BOARS 25-.26.

SOWS, NONE.

SHEEP .23-.68.

LAMBS EA. 23.00-113.00.

LAMBS PER LB. .66-1.50.

GOATS EA. 67.50-167 50

KIDS EA. 12.00-97.50.

HIDES EA. 2.00-24.00 EA.

650 HEAD

OPEN HOUSE

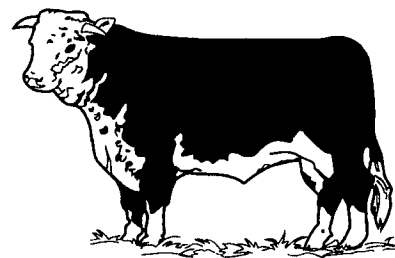
Feb. 28 and March 1, 2002

Store Hours:

Mon. - Fri. 7-5

Sat. 7-3

10% OFF Most Items In Store



Cedar Grove Farm Store

STIHL • Machinery • Parts • Vet Supplies

1120 Ritner Hwy., Shippensburg, PA 17257

717-532-7571 Store • Norman, General Manager

Door Prizes

Door Prizes

Tillage Parts

Rake Teeth

Guards

Haybine Knives

Sickle Sections

Section Bolts & Rivets

Baler Twine

Stihl Products, Parts, etc.

BOLTS

(grade 5)

from 1/4" - 1" up to 6" L. 99¢ per lb.

from 1/4" - 1" over 6" L \$1.49 per lb.