

LEFEVER BROS. CHEVROLET CHEVY TRUCKS GEO

YOUR DIRECT LINE TO GENUINE GM PARTS

(800) 533-3837

When you call the number listed above, you'll reach our wholesale parts specialists, who can help you keep your GM repair work moving quickly.

Ask about:

- Specializing in GM Medium Duty Trucks, Current and Obsolete.
- \$500,000 Parts Inventory.
- Parts Locator for Those Hard to Find Items.
- We Ship Anywhere, Local Delivery Available.
- Experienced, Knowledgeable Personnel.

Mon, Tues, Thurs, Fri
7:30 a.m. - 4:30 p.m.
Wed: 7:30 a.m. - 8:30 p.m.
Major Credit Cards Accepted

(717) 432-9697

Quality Dealer Since 1921

406 U.S. Rt. 15, Dillsburg, PA 17019

GM Parts
THE FEELING IS GENUINE



ALL STAR

New Trucks

(1) 2002 Mack CV703
E7-427 w/Engine Brake
T2130B, 18 Ft., 46 Rear, 227 W B

(1) 2002 Mack RD600,
E7-460, RTOF16908LL, AL461,
4.35R, W.B. 236

Used Trucks

1998 CH 613, E7-427, Engine Brake,
10-Spd., Air-Ride, 64 in High Rise,
Alum Wheels

1997 CH613, Axle Back, E7-350, 10-Spd.

(2) 1997 CH613, Axle Back, E7-350,
10-Spd., 64" Mid-Rise Sleeper

1995 CH613 42 in High-Rise

1993 CH613 E7-350, Axle Back

E 7-427 V-Mac II Used Engine

Many other Trucks in Stock - Call For Details.

LESHER

Mack

SALES & SERVICE

2700 Cumberland Sts Lebanon, Pa 17042

(Route 422 West)

website www.leshermack.com

717-273-4535

35

TRUCKS AND TRAILERS

40' flat trailer, fair cond, \$900. 814-784-5459.

1971 Highway van trailer, 45' x 96", good for storage, \$1,900. 610-767-2409.

'88 Ford F150 XLT Lariat, 4x4 w/cap & extended cab, good cond, needs motor work, \$2500. 717-687-6162

1988 Mack RD688S, tri-axle, 18' alum. bed, 350 10spd., AC, Jake, air ride, new clutch, elec. tarp, Pintle hitch, 18 front 44 rears, \$28,500. Call 717-367-0338.

Wrecked, whole or parts, '89 GMC C35 Salvagable parts: dump w/lift gate, 350 EFi, 4spd, clutch, rear, etc. 717-266-0575

'90 Suburban Silverado, dsl, 4x4, A/OD, black/silver, loaded, 8 pass, front/back AC & heat, \$6400 obo. 717-266-0575

MOTORS

New & Rebuilt

350, 366, 427, 454

6.2 Diesels

Rebuilt & Used

Will Install

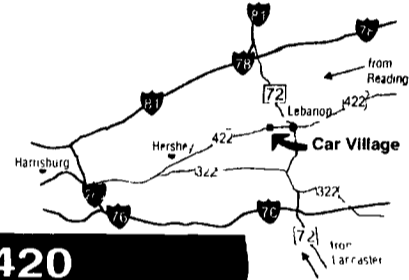
717-762-6415

Business Hours:
Mon.-Fri. 9 to 9;
Sat. 9-4

2300 W. CUMBERLAND ST.
(Rt. 422)
LEBANON, PA 17042
(Across From Lebanon Valley Mall)

CAR VILLAGE

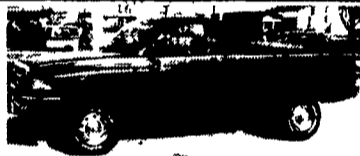
HEAVY DUTY TRUCKS



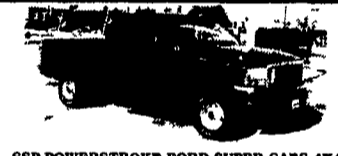
PHONE 717-274-2000 Toll Free 1-800-650-1420



5 SP. POWERSTROKE 96 FORD F250 4x4
Great Running Tk, Powerstroke Turbo Diesel, 5 Sp., Loaded XLT, L/O Hubs, Limited Slip Axle



NOT FANCY JUST TRUCK 2000 DODGE RAM 2500 ST
Don't be scared to get this one dirty, 24 Valve Cummins Turbo Diesel, 6 Sp., A/C, Tow Pkg, Cloth Seat Vinyl Floor



GSP POWERSTROKE FORD SUPER CABS 4X4
2 To Choose From 2000 SHORTBED 99 LONGBED
Gorgeous, Strong Trucks, Loaded XLT, 40/20/40 Seats, Fact Tow Pkg, Aluminum Wheels & More, Remaining New Tk Warranty



WORKHORSE 99 DODGE 2500 4x4
Heavy Duty 3/4 Ton, 24 Valve Cummins, 5 Sp., A/C, Tow Pkg



93 DODGE CLUB CAB 4 WHEEL DRIVE
Great Running Tk, Cummins Turbo Diesel, AT, A/C, Lock Out Hubs, Tow Pkg



SHORT BED CREW CAB, 97 FORD F250 4X4
XLT A Real Nice One, Only 55,000 Miles, Powerstroke Turbo Diesel, AT, A/C, Fact Tow Pkg, Alloy Wheels, Tint Glass & More



97 FORD F250 SUPER CAB, 4 WHEEL DRIVE
Positively The Nicest Looking & Driving 97 Out There, Only 43,000 Miles, Powerstroke Turbo Diesel, AT, A/C, Comfortable 40/20/40 Seat, Alloy Wheels, Tow Pkg



BIG BAD DODGE 98 DODGE 3500 QUAD CAB DUALLY
4 Wheel Drive, 24 Valve Cummins Turbo Diesel, 5 Sp., A/C, Vinyl Seat & Floor, Tow Mirrors



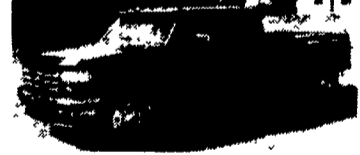
5 SP CUMMINS 4 WHEEL DRIVE 97 DODGE 2500 4X4
Very Clean, Very Nice, Cummins Turbo Diesel, 5 Sp., A/C, Tow Pkg, Chrome Wheels, Ready & Waiting For You \$19,900



4x4 SUPER CAB 93 FORD F250
A Nice One Only 53,000 Miles, 7.3 Diesel Auto, A/C, Capt Chairs Console Tow Pkg A Nice Tk For Very Little Money



6 SP CUMMINS - 2000 DODGE 2500 4X4
Like New, Only 11,000 Miles, 24 Valve Cummins, Turbo Diesel, 6 Sp., A/C, Factory Tow Pkg, Aluminum Wheels, New Tk Warranty



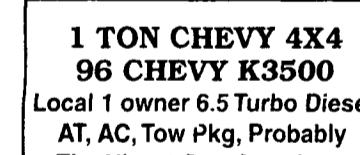
CREW CAB DUALLYS
2 Available, Auto & 5 Sp., Powerstroke Turbo Diesel, Loaded XLT, Dual Tanks, Aluminum Wheels, Very Clean & They Run Strong



QUAD CAB SHORTBED 4X4 98 DODGE 2500
Gorgeous Truck, 24 Valve Cummins Turbo Diesel, AT, A/C, Loaded Laramie SLT Pkg, All Options Priced Right \$23,900



BIG TRUCK, BIG GAS ENGINE 96 FORD F350 4 DOOR
4 Wheel Drive, 460 I V8, Auto, A/C, Lock Out Hubs



1 TON CHEVY 4X4 96 CHEVY K3500
Local 1 owner 6.5 Turbo Diesel AT, AC, Tow Pkg, Probably The Nicest One Anywhere, Better Check It Out

GOOSENECK PULLERS, FLATBEDS, WORK & DUMP TRUCKS



MECHANICS BODY 99 FORD F350 SUPER DUTY
12 Foot Body, Dual Rear Wheel, Powerstroke Diesel, AT, A/C



MULTI PURPOSE 2000 FORD 450 SUPER DUTY
Only 14,000 Miles, Powerstroke Diesel, Auto, A/C, 17 Ft Bed, With Fold Down Ramps, Storage For Tools



DRIVES LIKE A PICKUP 97 CHEV F350
Very Nice, Only 55,000 Miles, V8, Auto, 9 Foot Body



CAB OVER DUMPS CHEVY W4 (ISUZU)
3 To Choose From 97-95 Turbo Diesel, Auto, 12 Foot Steel Beds, Great Fuel Mileage, Short Turn Radius



4X4 SUPER CAB DUMP 00 FORD F350
Hard To Find Tk, Powerstroke Turbo Diesel, 6 Sp., Only 34,000 Miles, Limited Slip Gear, Fold Down Dump Sides



GOOSENECK HAULER 99 FORD F450 SUPER DUTY
4 Wheel Drive, Awesome Tow Machine, Only 38,000 Miles, Strong Powerstroke Diesel, 6 Sp., A/C, Both Gooseneck & Class 3 Hitches



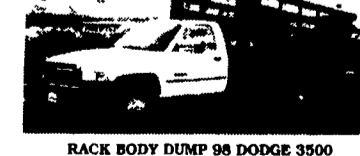
4X4 CHASSIS CAB 2001 FORD 550 SUPER DUTY
Powerstroke Diesel, 6 Sp, Heavy 17,500 GVW, 60" C A, 141 WB, Loaded XLT



RACK BODY FLATBED 94 DODGE 3500
A Handy Truck Around The Farm Very Clean Only 58,000 Miles, 360 Magnum V8 5Sp 9 1/2 Foot Bed



FARMERS FRIEND 94 FORD SUPER DUTY
Heavy Duty, 15000 GVW, Turbo Diesel, 5 Spd, A/C Removable Sides, Ready To Work



RACK BODY DUMP 98 DODGE 3500
Cummins Turbo Diesel, 5 Sp., 12 Foot Rack Body, Tow Pkg., Low Miles, Remaining New Tk Warranty



2000 FORD F450 CREW CAB CHASSIS 4 WHEEL DRIVE
Powerstroke Turbo Diesel, 6 Sp., A/C, Only 33,000 Miles, Heavy 15,000 GVW, Ready to Tow, Ready to Work



2000 FORD 550 CREW CAB CHASSIS CAB 4X4 RARE FIND
A Very Strong Truck Powerstroke Turbo Diesel, 6 Sp, Loaded XLT, All Options 40/20/40 Seat, 43 000 Miles Remainder New Tk Warranty



LOW MILEAGE FLATBED 97 CHEV C3500 FLATBED
350 V8, 5-Spd, A/C, 12 Ft Phoenix Body, Tow Pkg., Tool Box, Mint Condition, Only 22,000 Miles



550 SUPER DUTY 99 FORD CHASSIS CAB
Ready For The Big Load, Heavy 17 500 GVW, Powerstroke Turbo diesel, 6 Sp., A/C, Short 141 W B 60 C A Remainder New Tk Warranty



12 FOOT BOX TK, 2000 MITSUBISHI
Like New, Only 17,000 Miles, Turbo Diesel 5 Sp Trans, Swing Open Rear Doors, Great Fuel Mileage, East To Maneuver