

**35 TRUCKS AND TRAILERS**

'86 IH 9L dsl, Morgan 24ft box, 25,500 GVW, \$6000 obo. 610-273-3211

'00 Dodge 2500 8 pass., 318 auto, PS, PB, PW, PDL, cruise, tilt, dual air, AM-FM cassette, new Michelins, 35,000 miles, \$14,900. 717-733-2873

'01 Dodge 3500 15 pass. 360 auto, PS, PB, PW, PDL, cruise, tilt, dual air, AM-FM cassette, 21,000 miles w/balance of factory warranty, maroon, \$17,900. 717-733-2873

'99 Dodge 2500 12 pass., 318 auto, PS, PB, dual air, AM-FM cassette, 24,000 miles, burgundy, \$12,900. 717-733-2873

'00 Ford XL E150 club wagon, 12 pass., 5.4 auto, PS, PB, cruise, tilt, dual air, 48,000 miles, white, \$12,900. 717-733-2873

'94 Ford XLT E350 club wagon, 12 pass, 351 auto, PS, PB, PW, PDL, cruise, tilt, dual air, AM-FM cassette, 29,000 original miles, excellent condition, \$10,900. 717-733-2873

'96 Dodge 3500 12 pass, 360 auto, PS, PB, dual air, AM-FM, 65,000 miles, new Michelins, excellent condition, \$8,975. 717-733-2873

'87 GMC 2500 HD 3/4 ton, 350 FI, auto, PS, PB, 8,600 GVW, 58,000 miles, \$2,250. 717-733-2873

'98 Dodge 1500 short whl. base, 8 pass. van, 3.9 V6, auto, PS, PB, PW, PDL, cruise, tilt, air, 39,000 miles, 2 tone blue, excellent condition, \$11,900. 717-733-2873

'95 Chevy G20 Mark III conversion van, 350 auto, PS, PB, PW, PDL, cruise, tilt, air, AM-FM cassette, 65,000 miles, dark green, excellent condition, \$7,950. 717-733-2873

'96 Ford XLT Ranger short bed, 4 cyl, 5 spd, PS, PB, air, AM-FM cassette, new radials, 69,000 miles, black, \$4,975. 717-733-2873

'98 GMC Sonoma SLS S15, extended cab pu, 2WD, 4 cyl, auto, PS, PB, air, AM-FM cassette, 41,000 one owner miles, black, excellent condition, \$7,950. 717-733-2873

'98 Dodge 2500 12 pass. van, 318 auto, PS, PB, PW, PDL, cruise, tilt, dual air, AM-FM cassette, red, 52,000 miles, excellent condition, \$11,900. 717-733-2873

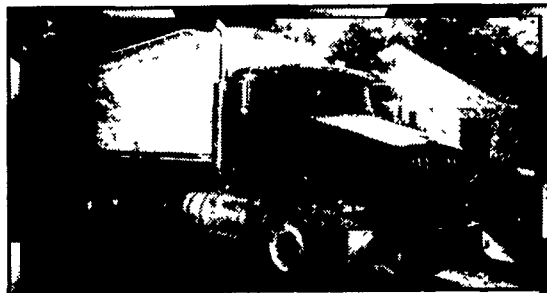
Senior Citizen Creampuff. 1996 Chevy Silverado white p/up truck, 2500 series, push button 4x4, reg cab, long bed, 350 eng, towing pkg w/elec brakes, running boards, GVW 8600, like new cond, 46,000 mi. For sale by 1st owner, \$16,500. 717-367-2362

'82 Freightliner tractor, 3406 Cat eng, 15 spd trans, 212"WB, wetline, good cond, \$4000. 717-733-8161

40' flat trailer, fair cond, \$900. 814-784-5459.

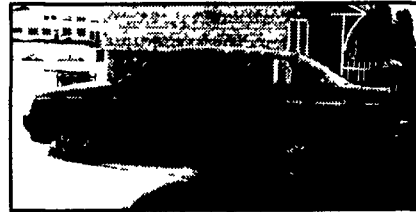


**1987 KW T600 Triaxle w/22' Hewey dump, hyd gate, fast tarp. Factory reman 400 Cummins w/85K miles, 24.5 Budds, air ride, \$22,900 Call Martin Mulch (717) 733-1602**



**1999 KW TRI-AXLE BULK FEED TRUCK, 165,000 Miles, Remainder is 335,000 Miles on Warranty, 475 Cat 8 Speed LL, 24 Ft FRP Bulk Body, New Hoist, Everything in Excellent Condition. CONTACT JEFF OR BOB. 570/689-2488, 888/266-7215**

**FOR SALE**

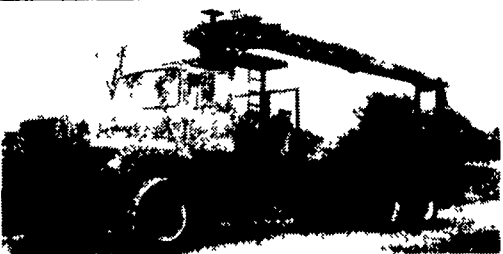


**'94 VW JETTA GL 5-Speed, Gas, 97,000 Miles, Runs, Drives & Looks Good \$5,500 OBO Call 717-926-0297**

**"Think Service Trucks"**



**88, 89, 93 Ford F350 12' to 15' bodies, rescue vehicles, Diesel, Auto. Dual Wheels, Low Miles, Multiple compartments, Perfect Service Trucks From \$6,990 Call Ray at 856-424-6300 www.domsint.com**



**'85 Ford L9000 Tandem Axles, w/Dry Wall Hoist \$13,000**

**Weaver's Truck and Equipment Sales**

Milton, PA

**570/523/9598**



**Owner Retiring From Farming! 1990 TRAVIS DUMP TRAILER w/(R) TITLE 34x34 Like New Rollover Tarp, 82 Inch Sides, Center Point Suspension, 3-Way Air Rear Door, Like New Brakes & Drums In past 6 years hauled only approx. 50 loads of corn This past year not used - stored inside Trailer in excellent condition. ASKING \$15,000 • CALL 814-237-0189**

**IN STOCK**



**CORN PRO SPECIAL PRICING ON UNITS IN STOCK GOOSENECK 20+5 FLATBED 14,000 GVW**

**STOCK TRAILERS**

**SKID LOADER TRAILERS Nice Selection of Pequea Trailers In Stock**



**Rt. 22 West, Fredericksburg, PA 717-865-7575**

**Specializing in Quality Built Trailers and Used Trucks**



**HUFFMAN TRAILER SALES FRIENDLY, PROFESSIONAL SERVICE**

New Crop Peanut hulls available by self-unloading trailers

Division of Huffman Litter Service



**Rt. 11 NORTH, NEAR EXIT 251 • HARRISONBURG, VA 22802**

**OFFICE: 540-434-3530 OR 800-825-2545**



Featherlite - Hudson - Titan - Pace American - Apache Cattle Feeders

1993 International, 7.3 Diesel 5 Speed Trans PS AC Full Disc Brakes, 79,000 Miles New Rubber, Paint "All The Bells, Looks New Runs New 25,500 GVW



1982 International 2275, 6 cyl Diesel 10 Speed PS 25 Flat Bed 53,000 GVW 205,000 Miles



1985 International Cargo Star, 192,000 Miles 22,500 GVW 7.3L Diesel Auto Cab & Chassis



1993 International 4900, 24 Van w/Lift Gate, DT 466 Diesel 210 HP 5 Speed Hyd Brakes Under CDL, 284,000 Miles



1994 International, Cab & Chassis DT 466 210 HP Eng 6 speed Trans AC PS Full Air Brakes Looks new & Runs New! 33,000 GVW

**Phone 717-664-1696 CHARTER ENTERPRISES, LTD. 270 Hostetter Road, Manheim, PA**

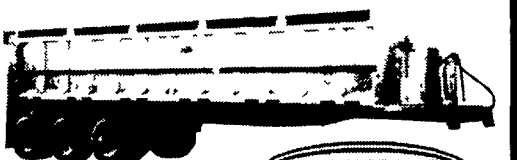
**NORTH EAST ENTERPRISES SALES - SERVICE - PARTS - RENTALS**



Ask Us About Our Used Trucks & Trailers



Adjustable Loading Angle, Tread Plate Fenders, Adjustable Latch, 10 Degree Loading Angle, 15.5" Offset Wheels, Hydraulic Cushion Tyres 14"



**CALL TOLL FREE 1-877-526-3655**

After Hours: 410-658-0818 M-F 6-9 PM EST

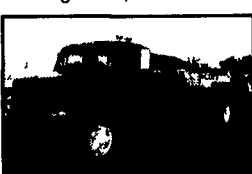
Web Address: www.etrailersales.com

Email: trailerinfo@neent.com

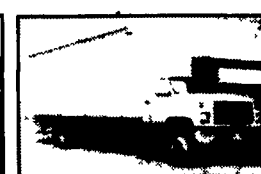
Ask for Wayne or Julie Brown

**LEED TRUCK CENTER**

402 South Chiques Rd. Salunga Exit, Route 283 **717-898-1200**



1991 IHC 4900, DT466 Turbo Diesel, 6+1 Spd, P/S, A/B, 32,800 GVW, 21' Platform Body, New Insp., Clean Only \$7,900



91 GMCTopkick, 3116 Cat, 215 HP, 6 Spd, P/S, A/B, A/C, 32,000 GVW, 26' Removable Van Body, Will Separate Make Offer



1986 MACK M5250, 6 Cyl Turbo Diesel, 6 Spd, P/S, A/B, 33,000 GVW, 125" CA, 16" C&C, New Insp., PTO, Very Clean Priced To Sell!



1985 Ford F-900, 8.2 Liter Diesel, 10 Spd, P/S, A/B, Tandem Axle Hend Susp., 50,000 GVW, 26" Danco Rollback, Only 217,500 Miles Priced To Sell!

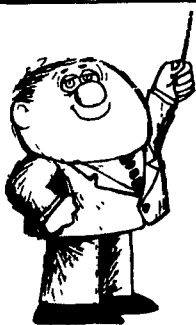
Anthony L.

**LANDIS AUTO SALES**

3394 Division Hwy., New Holland, PA 17557 Rt. 322, 1-1/2 mi west of Blue Ball (717) 355-0644



**99 FORD TAURUS LX 3.0 V6 PW, PDL, P Mirrors, A/C, Tilt, Cruise, Cas., 79K Mi., Minor Scratches, Decent Car \$5,900**



**A lesson well learned... Lancaster Farming's classified ads get results!**