

Public Auction Register

Closing Date Monday 5:00 P.M.

of each week's publication

Internet Sale Register will be updated every Sat. at 2:23 P.M.

ATTENTION AUCTIONEERS

All sales register info needs complete address, street, town, county & state.

SAT FEB 9 - 9AM Farm equipment farm related items, hand tools For Pual W. and Verna M. Sauder, 45 N Forrest Rd., Mertztown, Berks Co., Pa. Clarence N. Shirk Auction Service AU-3757-L

SAT FEB 9 - 9AM Shop equip, for KM Woodworking at 65 N Harvest Rd., Bird in Hand, Lanc Co., Pa. Woodworking tools Steve Petersheim Auct AU001349L 610-857-5200

SAT FEB 9 - 9AM Tractors, farm machinery, produce equip, antiques, toys, HH goods at 30 Erbs Bridge Rd., Litz, Pa. By Aaron R. & Elsie Hoover Snyders Auction Service AU-003489-L

SAT FEB 9 - 9:30AM Tractors, farm equipment for Wagner Farms, Mountain Ave., Warren, NJ Arthur Hanna Aucts 908-995-9699

SAT FEB 9 - 9:30AM Sale for Landis E. & Gladis Burkholder Farm items, antique, HH goods, 84 Motor home At 705 Franklyn St. Denver, Lanc Co Pa Miller & Siegnst AU1723-L

SAT FEB 9 - 10AM Tractors, trucks, farm equip, lawn & garden equip At 8571 S Dupont Hwy, Felton DE Sam Walters Auct 302-284-4619

SAT FEB 9 - 11AM Campbell (Steuben Co) NY Curtisdale Farms machinery and barn equip auction The Elmer Smith Family Pirring Aucts., Inc

TUES FEB 12 - 9AM crops, mules, farm equip, From Interstate take 340W to Smoke-ton, right on Mount Sidney Rd to sale on left Benjamin A & Priscilla Beiler, owners Mel Hoover AU-003111-L 717-35-8397

TUES FEB 12 - 6PM Winross Trucks, Ertl & Farm toys Inter-course Fire Hall, Intercourse, Pa Ohio Private Collection Witman Auctioneers AU001127-L 717-665-5735

WED FEB 13 - 9AM Holstein herd, farm machinery, 8000 tobacco lath, 7 draft horses, Sput-nik, ear corn, Pequea manure spreader, For Melvin & Fannie Stoltzfus 610 May Post Office Rd., Strasburg, Pa Petersheim

Auct Au0001349L 610-857-5200

WED FEB 13 - 10AM Construction Equipment & Vehicles, Waste Equipment & Much More! Auction Site "NPD", 102 Monahan Ave., Dunmore, Pa 18512, Just off Exit 188 of I-81 COL STEVE SITAR & CO Ph 570-586-1397 Fax 570-586-6058

WED FEB 13 & THURS FEB 14 - Marion Auction Service,

5174 Horst Road, Chambers-burg, Pa 717-375-4700

THURS FEB 14 - 9AM Horses, mules, farm equip Aaron R & Mary G Stoltzfus, 331 Bartville Rd Mel Hoover AU-003111-L 717-354-6431

THURS FEB 14 - 9:30 AM King farm dispersal, Amish farm machinery, 7 mules, etc on farm 7 miles S of Jersey Shore, Pa (Nippenose Valley) Owner Dave King Fraley Auction Co 570-546-6907

STERMER'S CONSIGNMENT AUCTION

SAT., APR. 6, 2002 - 8 AM

Location: 125 Bermudian Ch. Rd., East Berlin, York County, Pa.

WANTED

Tractors; farm equip.; trucks; trailers; construction equip.; lawn & garden equip.; farm-related items.

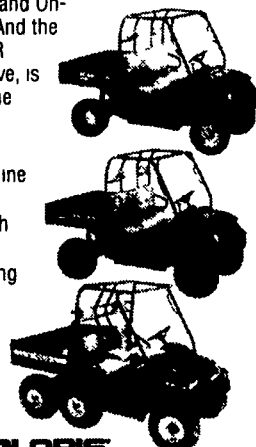
Deadline for advertising March 1. Deadline for consigning March 30. Phone: (717) 292-2245.

Stermer's Auction Service, Mike Stermer, Auctioneer, #2959L

TOUGH, TOUGHER, TOUGHEST.

The Polaris RANGER is known as the ultimate off-road utility vehicle. And now there are three models to choose from. The new Polaris RANGER 2x4 is hard-working, comfortable and easy on grass, featuring 2-wheel drive and turf tires. The new Polaris RANGER 4x4 takes you over the rough stuff with extra power and On-Demand true 4-wheel drive. And the ever-popular Polaris RANGER 6x6, with its true 6-wheel drive, is the world's best vehicle for the world's worst terrain.

- Powerful 4-stroke, 4-valve, liquid-cooled Polaris 500 engine (425 on 2x4)
- Automatic transmission with hi/low range and reverse
- Side-by-side seating, steering wheel
- Dump box with 1,000 lb capacity (850 lb on 2x4)
- 1,500 lb towing capacity (1,400 lb on 2x4)



LeROY'S SNOWMOBILES

1004 Highpoint Road
Cochranville, PA
19330

610-593-6280

The Polaris RANGER general purpose utility vehicle is not intended for and may not be registered for on road use. ©2001 Polaris Sales Inc. www.polarisindustries.com



PUBLIC AUCTION

SAT., FEB. 16, 2002

9:00 A.M.

9:00 A.M.

FARM EQUIPMENT, HOUSEHOLD GOODS & SHOP EQUIPMENT

Directions: From Blue Ball take 23 East to 625 North to Union Grove Rd. Turn right to sale on left.

Farm Equipment

John Deere 4020 with Torbo 1968 Model - 115 HP with clet trac steel wheels, John Deere 2130 - 65 HP with belting steel wheels, Model 2000-100 Hesston harvester with 2 row corn head 1000 R.P.M., Model 510 Massey Ferguson combine (diesel) with 13' grain head, Model 43 Massey Ferguson 4 row corn head, Model 7000 John Deere 4 row corn planter with liquid fertilizer & insecticide and monitor, 7 ft. John Deere belly mount sickle bar mower, 336 John Deere baler, John Deere 14T baler, Fox forage blower, #25 New Holland blower, White 348 3 bottom automatic reset plow (16" bottoms), International 55 - 7 teeth 3 point chisel plow, 3260 Badger manure spreader with tail gate (hydraulic web drive), Vicon 3 pt. disc mower, 12 ft. John Deere disc, 12 ft. Brillion 3 point field cultivator, 12 ft. steel drag, 352 New Holland grinder mixer, 32 ft. Little Giant elevator, 5 wheel Farm Hand wheel rake, MF 3 pt. wheel rake, Ford sickle bar mower, 5 ft. 3 point bar mower, 14 ft. flat wagon, 16 ft. flat wagon with 4 ft. sides, 2 row rear mount 3 point cultivator, 8 ton forage wagon, New Holland #8 forage wagon, EZ forage wagon, 6'x14' hydraulic hog trailer, 50 ft. P.T.O. grain auger, wide front end for Farmall C tractor, 65" rear steel wheels for 4020, manure fork 5 ft 6 in wide, 36" PTO wood saw buck, 3 point P.T.O. 200 gal. sprayer, model 109 Bush Hog mower (10 ft. off set) (pull type), 2 head gates, 2 - 20 ft Jamesway hexapods with cable, Jamesway V2 silo unloader (for parts). 2-8x12 utility sheds, 8x10 utility shed, 9 ft. garage door, 8 ft. garage door, 4 ft by 6 ft hot bed.

Shop Equipment

H.B. Smith Model C505C - 48 in. triple drum sander with 10 HP, 7 HP motors, 500 AMP Westinghouse 3 phase 60 cycles DC 440-220 welder, Lincoln A.C. 180 AMP Welder, 10 ft. chain hoist with A frame, 20 ton chain hoist without frame, Rockwell Delta drill press, 10 ft. steel work bench, bolt bins, shop wood stove, 3 ft. wide 4 ft. high, Alpine chain saw, 6 & 12 volt battery charger, Homelite crop duster, Homelite water pump, hydraulic cylinder with 10 ft hose, feed cart, 2 - Fairbanks platform scales.

Butcher Equipment

Sausage stuffer, meat grinder, meat slicer, hog scrapers, scalding trough, butcher bench, stirrers, butcher furnace, cast iron furnace kettle.

Misc. Items.

2 ft. x 8 ft. stainless steel table, Losch size 475 Stoker furnace, as is, steel trough, John Deere 214 riding mower B6100 - 4 wheel drive, Kubota Diesel Kubota 36 in. 3 point tiller, driving harness, collar.

Household Goods & Antiques

22 cu ft. chest freezer, 1 hole corn sheller, chicken coops, bushel crates, 2 - 20 qt. stainless steel stock pots, extra large stainless steel dish pan with handles, wooden butter churn, cheese mold, noodle maker, wooden butter mold with star design, extension table with boards, platform rockers, lawn chairs, 20 Melmac plates, large stainless steel dish drainer, stainless steel pressure cookers, crock pot, Tupperware, freezer boxes, pie pans, bread pans, fans, new clipper set, long bench, iron bed, swivel rockers, adding machine, typewriters, portable Singer sewing machine, gas light parts, window screens, kerosene heater, metal cabinets, old windows & doors.

Terms by

LEROY N. & ANNETTA M. BURKHOLDER

1543 Union Grove Rd., East Earl, PA 17519

Phone (717) 445-6950

Cash or Honorable PA Check Only
All Announcements Sale Day Take Precedence Over All Advertising.
Not Responsible for Accidents
Food on Premises

Auctioneer: Mel Hoover AU-003111-L
717-354-8397 Home or 717-354-6431 Barn



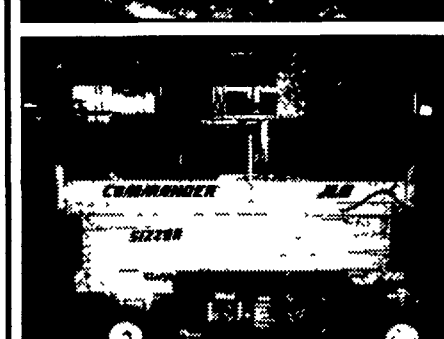
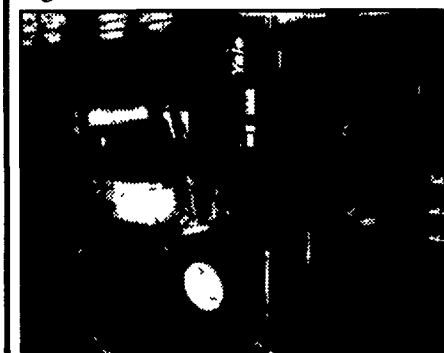
PUBLIC AUCTION

Complete Liquidation Of James Interior Systems

207 South Sumner St. York, Pa

FRIDAY, FEBRUARY 1, 2002 9:00 AM

DIR: In West York, From Rt. 30 Take 74S To Highland Ave., Turn Right, Pass The York Fairgrounds & Take 462 W 2 Blocks To Sumner St., At Light Turn Left, Go 2 Blocks To Auction On Left, Watch For Signs.



LIFTS TOOLS TRUCKS

Forklift & Lifts: Yale 5000 LB Propane Pneumatic Tire Forklift 1,385 Hours 18' Lift 1 Owner, JLG Commander Sizzor 25' 750lb Platform Lift (NICE), (2) 20' 500lb Platform Lifts, High Horse Manual Platform, Vermette 520 500lb Manual Lift, (3) Pallet Jacks

Trucks: 90 Ford F-250 Pickup, Auto, V8 101,000 Miles, 8' Side Toolboxes & Ladder Racks, 89 Ford F-250 Pickup Auto, 6 cyl, 73,000 Miles, 79 Jeep Cherokee 4x4 w/Myers Angle Snowplow 35,000 Miles, 92 GMC 3500 Van Auto 140,000 Miles

Trailers: Hudson 2 Axle 10,000 LB Trailer w/Mesh Ramp, Homemade 2 Axle Trailer, (2) Material Handling Wagons

Large Tools: Mark 1 Series m1050 10' Alum. Metal Break, Stone 753 PM4 Mortar Mixer w/Gas Engine, Gilson Elec Cement Mixer, Koehring Moto-Bug Cement Buggy, Heavy Duty Floor Belt, Rotary & Buffer Sanders, (2) HD Elec Floor Scrapers, Century 100 Gasless Wire Feed Welder, 6HP 2000 PSI Pressure Washer (L/N), 760c Steam Jenny, (2) Hobart C-180-K Welders w/Kohler Engines, Craftsman Bandsaw, Craftsman & Dewalt Radial Arm Saws, Banding Cart, Carpet Rollers - Stretcher & Carts, Speed Air Portable Air Compressor, (5) Metal Job Boxes (2) Knack, Alum Dock Plate, Wright Dumping Hopper, Bolens Lawn Mower

Small Tools: (4) Laser Levels, Transit, (10) TrakFast Guns, Windlock Elec. Hot Wire Table, Wet Saws, Marble Saw, Small & Large Tile Cutters, (7) Dewalt & B&D Chopsaws,

Leister Heat Weld Kits, Leister & Windlock Grove Cutter, Bostitch Nailer, (5) Hammer Drills, Makita Elec Tools, Ramsets, Pneumatic Nailers, (7) scrapers, Jamb Under Cutting Tools, Airlessco Airless Sprayer, Shop Vacs, Drywall Carts & More.

Scaffolding & Ladders: (18) Sets Of Baker & Perry Scaffolding, (60+) pcs 5' Open Scaffolding Bucks, Scaffolding Wheels & Accessories, 28' Alum Ladder Walk, Alum. Scaffolding Planks, 4'-40' Fiberglass & Alum. Extension & Stepladders.

Pallet Racking: (11) 14' Uprights, (14) 12' Cross Members, (16) 10' Uprights, (56) 10' Cross Members

INTERIOR FINISHING MATERIAL

Over \$50,000.00 Dollars In New Interior Finishing Supplies & Materials

USG Ceiling Tile 2,000 Sq. Ft., Armstrong Ceiling Tile 3,000 Sq. Ft., Armstrong Grid 8,000 LF, USG Grid Down 2,500 LF, Drywall Accessories 500 Pcs, Dryvit 75 Buckets, Plaster, Johnsonite Base 3,000 LF, 32' Carpet 350 Sq. Yards, Vct. Vinyl Floor Coating 50 Boxes, Insulation 2,000 Sq. Ft., Dryvit Insulation Board, Ceramic Tile 5,000 Pcs, Metal Studs 18,000 LF, Metal Stud Track 5,000 LF, Flat Stock, Iron, Hardware 30,000 Pcs, Adhesive 25 Buckets

OFFICE EQUIPMENT

Nice Selection Of Modern Office Furniture & Chairs, Ok1 Data 391 24 Pin Printer, & More.

ALL ANNOUNCEMENTS DAY OF AUCTION TAKE PRECEDENCE

OVER PRINTED MATERIAL

Auction Held Indoors Blizzard Date Feb. 4 2002 Terms: Cash Or Good Check

Rentzel's Auction Service Emigsville, PA 717-764-6412
Blaine Rentzel AU 761-L Dave Conley AU 3269-L

