

Philadelphia Herbs

Philadelphia Terminal
 Prices as of January 23, 2002
 Report Supplied By USDA

MISC HERBS -ANISE: 1/4 ctns CA 24s 15.00 -ARRUGULA: 4/5 bucrts bchd FL 24s 15.00-18.00 -BASIL: ctns bchd FL 15s 15.00-16.00 few lower 1 kg ctns bchd IS 12s 11.00-13.00 -CELERIAC (CELERY ROOT): 15 lb lugs CA 15.00 20 lb crts lse CD 10.00 -CHERVIL: OFFERINGS INSUFFICIENT TO QUOTE -CHIVES: 1 kg ctns bchd IS 12s 18.00 -CILANTRO: 4/5 bucrts bchd FL 30s 13.00-14.00 ctns approx 20 lbs TX 30s 15.00-18.00 -DILL: ctns bchd TX 24s 10.00-12.00 crts bchd FL 24s 8.00-10.00 ctns approx 20 lb TX 24s 14.00 -DRY ESCHALLOT: 10 lb sks NL 11.00 -HORSERADISH: TOO FEW SALES

TO QUOTE -MARJORAM: 1 kg ctns bchd IS 12s 13.00 -MINT: crts bchd FL 12s 10.00 sml crt few 8.00 1 kg ctns bchd IS 12s 10.00 -OREGANO: 1 kg ctns bchd IS 12s 13.00 -ROSEMARY: 1 kg ctns bchd IS 12s 13.00 -SAGE: 1 kg ctns bchd IS 12s 13.00 -TARRAGON: 1 kg ctns bchd IS 12s 17.00 -THYME: 1 kg ctns bchd IS 12s 13.00 -WATERCRESS: ctns bchd FL 12s 6.50 24s 11.50.

Type NY 50 lb sks med 6.00-8.00 sml 7.00-8.00 mstr cntr 16 3-lb mshsks med 8.50 mstr cntr 20 2-lb mshsks med 6.00-8.00 Spanish Hybrid ID/OR 50 lb sks col 10.00 jbo 8.50-9.00 fr cond 7.50 UT 504b sks jbo 8.50-9.00 mostly 9.00 Sweets PE 40 lb ctns jbo 18.00 Red Globe Type ID 25 lb sks jbo 7.00-7.50 NY 25 lb sks jbo 6.00-7.00 mostly 7.00 med 6.00 - POTATOES: MARKET ABOUT STEADY US1 SZ A WASHED OR BRUSHED UNLESS OTHERWISE STATED Russet CD CDOne 50 lb ctns 10 oz min 8.00 Burbank ID bld 10 5-lb sks non sz A 12.00-14.00 mostly 13.00-13.50 50 lb ctns 50s 13.00-14.00 60s 14.00-15.00 70s 16.00-16.50 few 17.00-17.50 80s 15.00-17.00 mostly 15.00-16.00 90s 14.50-16.00 mostly 15.00-16.00 100s 13.50-15.00 mostly 14.00-15.00 120s

Onions, Potatoes

Philadelphia Terminal Market
 January 23, 2002

Report Supplied By USDA

ONIONS AND POTATOES - ONIONS DRY: MARKET ABOUT STEADY US1 OR GENERALLY GOOD QUAL AND COND UNLESS OTHERWISE STATED. Yellow Globe

14.00 U.S. Two 50 lb sks 6 oz min 9.00-9.50 mostly 9.00 Round Red CD 50 lb sks 11.00-12.00 sz B few 14.00 MN/ND 50 lb sks sz B 11.00 NY 50 lb sks 9.00-11.00 mostly 11.00 some 8.00 few 12.00 sz B 9.00-10.00 Round White CD 50 lb sks 7.00 lge 8.00 Prince Edward Island CDOne 50 lb sks 7.50 few 8.00 PA 50 lb sks 6.50-7.00 mostly 7.00

Eastern Cornbelt Direct Feeder Pig Weekly

Springfield, Ill.
 January 18, 2002

Report Supplied By USDA

FEEDER PIGS: Receipts: 11,677; last week 14,378. SEW 10 lb pigs were firm, and feeder pigs were firm to 2.00 higher Demand was moderate to good for a

light to very light offering.

Eastern Cornbelt - Illinois, Indiana, Ohio, Michigan Receipts 8,177; last week 9,368. Estimated 50-54% Lean Value.

EARLY WEANED PIGS, 10 Lbs Basis. Lot size 250-750: 2,862 head, 29.04-35.00, wtd avg. 31.70; lot size 750 or more. 1,500 head, 30.90. Total Composite: 4,362 head, 29.04-35.95, wtd. avg. 31.43

FEEDER PIGS, 40 Lbs Basis Lot size under 250: 140 head, 51.50, wtd. avg. 51.50; lot size 750 or more: 1,100 head 51.50-64.00. Total Composite 1,140 head, 51.50-64.00, wtd. avg. 62.46.

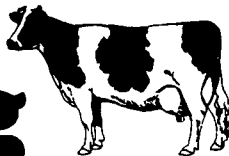
FEEDER PIGS, 50 Lbs Basis Lot size under 250. 350 head, 50-55.50, wtd avg. 52.36; lot size 250-750: 2,325 head, 49.15-54.00, wtd avg 50.65 Total Composite 2,675 head, 49.15-55.50, wtd avg 50.87

FOB prices are quoted on a per head basis "picked up" at the sellers farm in Indiana, Illinois, Ohio, and Michigan, these prices do not include freight

Most lots of 40-60 weight pigs have a sliding value from the negotiated weight basis which is calculated on the actual average weight of the lot plus or minus 30-.40 cents per pound. Some lots of early weaned pigs are discounted 1.00-10.00 per head on pigs weighing under 10 pounds Early weaned pigs are under 19 days old. Estimated lean value is projected to base slaughter weights with normal confinement feeding conditions. Vaccination and health program values are not included but health status should be disclosed.



You're Invited To Our Annual Winter Meeting



Improving Your Dairy Production

- Reproduction
- Pre-fresh, Transition, and High Production Cows
- Digestibility of trace minerals
- Pasture Management
- Understanding DHIA Records
- What's new in protein
- Manure Management

Speakers include:

- Jeff Mamett - Pharmicia
- Dr. Walt Kennett - Old Mill Troy
- Jay Mylin - Lancaster DHIA
- Tim Fritz - Ampac Seeds
- Steve Wolfgang - Zimpro Corporation
- Keen Consulting
- Glenn Shirk - Lancaster County Extension Agent

WHAT'S AHEAD FOR... MILK FUTURES AND OPTIONS



Lehigh Valley Futures, Inc. through its clearing FCM, offers access to all major exchanges' Futures and Options.

Serving the Farm Community for more than 30 years.

When buying options, your risk is in some cases limited to the premiums paid plus transaction costs...

FOR INFORMATION, CONTRACT DETAILS AND FUTURES AND OPTIONS STRATEGIES...

PHONE (610)366-7979 or 800-543-8939

LEHIGH VALLEY FUTURES INC.

Commerce Plaza, Suite 249,
 5000 Tilghman Street,
 Allentown, PA. 18104
 e-Mail: info@lvfutures.com
 web site: www.lvfutures.com

The risk of loss in trading futures and option can be substantial Futures and options trading may not be suitable for everyone You should carefully consider the risks in light of your financial condition in deciding whether to trade

MAYO MATS from Cow Comfort Ltd.



The biggest selling stall cushion worldwide

- Non slip surface
- Cleaner Cows - lower somatic cell count & less mastitis
- In use 18 years
- 10 year warranty in free stalls, 5 year warranty in tie stalls
- Very reasonably priced

Daniel's Farm Store
 324 Glenbrook Rd., Leola, PA
 717-656-6982

- Also Available From -

Country Garden Farm Supply
 Mifflinburg, PA
 (570) 966-3944

Hostetter Surge
 Annville, PA
 (717) 867-2896

Kidron Supply, Inc.
 Kidron, OH
 1-866-454-3766

D & J Farm Store
 Quarryville, PA

Weaver's Farm Store
 Fleetwood, PA
 (610) 944-0593

Introducing NEW VITAL™ INCREASE

- Increase dry matter intake 2.7 to 7.0 lbs/day
- Increase milk production 6.2 to 11.0 lbs./day

A revolutionary, hormone-free product. Don't miss it!

Tuesday, February 5, 2002

9:00 AM - 3:00 PM

Yoder's Restaurant, New Holland

Please call for reservations before 9:00 AM, Mon. Feb. 4.



HOMESTEAD NUTRITION, INC.

245 White Oak Road, New Holland, PA 17557

717-354-4398 • 888-336-7878