

**Philadelphia Vegetables**  
Terminal Market  
January 23, 2002

Report Supplied By USDA  
VEGETABLES -ARTICHOKES: TOO FEW SALES TO QUOTE - ASPARAGUS: 11 lb ctns/crts bchd MX exlge 20.00-22.00 lge 18.00 std 18.00 sml 18.00 PE exlge 20.00-24.00 few 25.00 lge 24.00 few 25.00 std 24.00 few 25.00 sml 24.00 few 25.00 -BEANS: MARKET LOWER buctns/crts FL Round Green Type Machine Picked 20.00 5 lb ctns GU Hericot Vert (French Type) 10.00-12.00 30 lb ctns/crts MX Round Green Type few 26.00 -BEETS: MARKET ABOUT STEADY ctns bchd TX 12s 10.00 25 lb filmbags lse CD med 5.00 NJ med 5.00 -BROCCOLI: MARKET HIGHER ctns AZ bchd 14s 15.00-18.00 mostly 18.00 few high as 20.00 CA bchd 14s 15.00-18.00 mostly 18.00 fair cond 8.00-9.00 20 lb ctns lse AZ Crown Cut 18.00-22.00 -BRUSSELS SPROUTS. OFFERINGS INSUFFICIENT TO QUOTE -CABBAGE: MARKET ABOUT STEADY 1 1/4 bucrts & 50 lb ctns FL Round Green Type med 7.00 Red Type med 8.00 GA Round Green Type med 7.00 TX Red Type med few 12.00 50 lb sks NY Round Green Type lge 4.50-5.00 1 1/4 bucrts & 40 lb ctns FL Savoy Type med-lge 10.00 TX Savoy Type med-lge 12.00 -CARROTS: MARKET ABOUT STEADY sks 48 1-lb filmbags CA Topped med-lge 13.00-14.00 mostly 14.00 CD Topped med-lge 8.00 sks 24 2-lb filmbags CA Topped med-lge 14.00

sk 10 5-lb filmbags CA Topped med-lge 14.00 CD Topped med-lge 6.50-7.00 50 lb sks lse CA Topped jbo 10.00-12.00 CD Topped jbo 7.50-8.00 mostly 8.00 few 8.50 ctns 20 1-lb filmbags CA Baby Peeled 13.00-15.00 ctns 12 2-lb filmbags CA Baby Peeled 17.00 -CAULIFLOWER: MARKET HIGHER ctns flmwrpd AZ 12s few 19.00 9s few 18.00 CA 12s 24.00-27.00 16s 22.00 GA 12s 20.00 -CELERY: MARKET ABOUT STEADY ctns AZ 2 dz 12.50 2 1/2 dz 12.00 flmbs 30s 13.50 CA 1 1/2 dz 10.00 2 dz 10.00-12.00 mostly 11.00 2 1/2 dz 10.00-12.00 mostly 10.00-11.00 FL 2 dz 11.00 2 1/2 dz few 11.00 3 dz 9.00 -CHINESE CABBAGE: celcrts FL 10.00 50 lb ctns FL Nappa 15.00 MX Nappa few 10.00-12.00 -CORN-SWEET: OFFERINGS LIGHT wbcrts FL Yellow 4-4 1/2 dz 16.00 White 4-4 1/2 dz offerings insufficient to quote -CUCUMBERS: MARKET SLIGHTLY LOWER WAXED 1 1/9 bucrts/crts MX med 14.00-16.00 occasional high as 18.00 fr qual 10.00-12.00 sml 12.00 UNWAXED 1 1/9 bucrts/crts MX Pickles 200-300s 18.00-20.00 -EGGPLANT: MARKET MX 18S HIGHER, OTHERS ABOUT STEADY 1 1/9 bucrts/crts MX 18s 10.00-12.00 35 lb ctns HD Chinese 22.00-25.00 1/2 bucrts FL Italian 11.00-12.00 -ENDIVE: MARKET ABOUT STEADY 1 1/9 bucrts/crts FL 11.00-14.00 ctns MX 24s 14.00 10 lb ctns BL Witloof 18.00 -ESCAROLE. MARKET ABOUT STEADY 1 1/9 bucrts/crts FL 14.00-16.00 ctns MX 24s 16.00 -GARLIC:

MARKET ABOUT STEADY 30 lb ctns AG White super col 37.50 col 34.00 super jbo 31.00 CA White super col 39.00 col 34.00-34.50 super jbo 28.00-31.50 CL Purple super col 33.00 col 30.00 CQ White 9 32.00 mesh 3s 34.00 11 35.00 -GREENS: MARKET ABOUT STEADY ctns bchd TX Dandelion 12s 10.00 Kohlrabi 12s 10.00 Swiss Chard 12s 10.00 Red 12s 10.00 ctns/crts bchd NC Collard 6.00 Kale 6.00 Mustard 7.00 Turnip Tops 7.00 Rape 7.00 -LETTUCE-ICEBERG: MARKET SLIGHTLY LOWER ctns AZ 24s 12.00-13.00 occasional lower Wrapped 24s 14.00-15.00 few 13.00 CA 24s 12.00 Wrapped 24s 14.00 -LETTUCE-OTHER: MARKET LEAF SLIGHTLY LOWER, OTHERS ABOUT STEADY ctns AZ Green Leaf 24s 10.00-12.00 mostly 10.00-11.00 Red Leaf 24s 15.00-16.00 mostly 15.00 CA Green Leaf 24s 10.00-11.00 mostly 10.00 Red Leaf 24s 15.00 3 lb ctns CA Mesculin Mix 7.00-8.00 mostly 7.00 -LETTUCE-ROMAINE: MARKET SLIGHTLY LOWER ctns AZ 24s 12.00-13.00 CA 24s 13.00-14.00 FL 24s 12.00 ctns 12 3-count pkgs AZ Hearts 14.00-15.00 -MUSHROOMS: MARKET STEADY 10 lb ctns PA lge 14.00 med 11.50 4 qt bkts PA med-lge 6.50 sml-med 6.00 5 lb ctns PA Oyster 16.00 Portobellas 9.00 sml 8.00 3 lb ctns PA Shiitake 13.00 fair qual 11.00 Oyster few 12.00 ctns 12 8-oz trays flmwrpd PA 10.25 ctns 8 1-lb trays flmwrpd PA exlge 14.00 ctns 10 10-oz trays flmwrpd PA 10.25 few 10.50 -OKRA: TOO FEW SALES TO QUOTE -ONIONS GREEN: MARKET GREEN ONIONS SLIGHTLY LOWER, LEEKS ABOUT STEADY ctns bchd MX 48s

8.00-9.00 mostly 9.00 crts bchd FL Leeks 12s 12.00 NJ Leeks 12s sml 9.00 ctns bchd MX Leeks 12s 14.00 TX Leeks 12s 15.00 -PARSLEY: MARKET ABOUT STEADY ctns bchd AZ Plain 60s 12.00 MX Curly 60s 12.00 TX Curly 60s 13.00-15.00 Plain 60s 13.00-15.00 1 1/9 bucrts/crts bchd FL Curly 60s 12.00-13.00 mostly 12.00 Plain 60s 12.00-13.00 mostly 12.00 -PARSNIPS: ctns 12 1-lb filmbags CD 7.00 20 lb filmbags lse CD 9.00 -PEAS GREEN: MARKET LOWER 10 lb ctns GU Snow Peas 16.00-18.00 Sugar Snap Peas 12.00-13.00 -PEAS OTHER: OFFERINGS INSUFFICIENT TO QUOTE -PEPPERS: MARKET ABOUT STEADY 1 1/9 bucrts/crts FL Bell Type Green exlge 8.00-10.00 med 6.00 few higher Red exlge 7.00-8.00 mostly 8.00 med 5.00 MX Bell Type Green exlge 8.00-10.00 lge 7.00-8.00 5 kg ctns IS Bell Type Orange 80-100mm 20.00-24.00 Red 80-100mm 17.00-19.00 mostly 18.00 Yellow 80-100mm 19.00 NL Bell Type Red 90-110mm 17.00 SP Bell Type Yellow 80-100mm 17.00 -PEPPERS OTHER: 1/2 bucrts FL Jalapeno 10.00-12.00 10.00 MX Jalapeno lge 14.00-15.00 1 1/9 bucrts/crts FL Long Hot 16.00 MX Serrano 21.00 Poblano 19.00 8 lb ctns MX Habanero 22.00-24.00 -RADISHES: MARKET ABOUT STEADY ctns tpd 30 6-oz filmbags FL Red 10.00 ctns tpd 14 1-lb filmbags FL Red 10.50 40 lb filmbags tpd FL Red few 28.00 ctns bchd MX Red 24s 8.00 -RHUBARB: OFFERINGS NONE -RUTABAGAS: TOO FEW SALES TO QUOTE -SPINACH: MARKET ABOUT STEADY ctns bchd TX Savoy 24s 12.00 ctns 12 10-oz film-

bags CA Flat 12.00 ctns 4 2-1/2-lb filmbags CA Flat 14.00 -SQUASH: OFFERINGS YELLOW STRAIGHT-NECK LIGHT MARKET ABOUT STEADY 1/2 bucrts FL Yellow Straight-neck sml-med 15.00-16.00 4/7 bucrts MX Zucchini sml-med 10.00 few 12.00 med 7.00-10.00 mostly 8.00 -SWEET POTATOES: MARKET ABOUT STEADY CURED 40 lb ctns LA U.S. One Beauregard med 15.00-16.00 NC U.S. One Beauregard med 12.00-12.50 some 11.00 fair qual 9.50 jbo 8.50 -TOMATOES: MARKET LOWER 25 lb ctns FL Vine Ripes light red-red 5x6s 15.00-18.00 85% U.S. One or Better Mature Greens light red 5x6s 14.00-16.00 mostly 15.00-16.00 occasional higher 6x6s 15.00 Local Repack 85% U.S. One or Better Mature Greens light red-red 5x6s 22.25 6x6s 21.25 ctns 2 lyr MX Vine Ripes light red 4x5s 14.00 5x5s 12.00 5 kg ctns IS Vine Ripes Greenhouse red med 18.00-19.00 SP Vine Ripes Greenhouse red med 18.50-20.00 -TOMATOES, CHERRY: MARKET FL CHERRY TYPE ABOUT STEADY, OTHERS LOWER flts 12 1-pt bkts FL light red 12.00-14.00 flts 12 1-pt cntrs with lids FL Grape Type light red-red 13.00-14.00 flts 12 1-pt bkts MX light red-red 12.00 fair cond 9.00-10.00 flts 12 1-pt cntrs with lids MX Grape Type light red-red 14.00 -TOMATOES, PLUM TYPE: MARKET LOWER 25 lb ctns FL light red 11.00-12.00 mostly 12.00 few 10.00 MX light red 10.00 -TURNIPS: 25 lb filmbags NC Purple Top med 7.00 -VEGETABLES OTHER: 8 lb ctns CA Radicchio 9s 8.00

**IDEAL LEAF TOBACCO COMPANY**

will be buying 609 tobacco on  
**Friday, Feb. 1**

We will be at our same location - the hay auction at Kirkwood. Grade your tobacco in 4 grades

**Paying Top Dollar**

**Office: 717-529-6416**  
**Mobile: 717-575-2525**

**Are You Interested In Extra Farm Income?**

We have swine finishing contracts available

**We Offer**

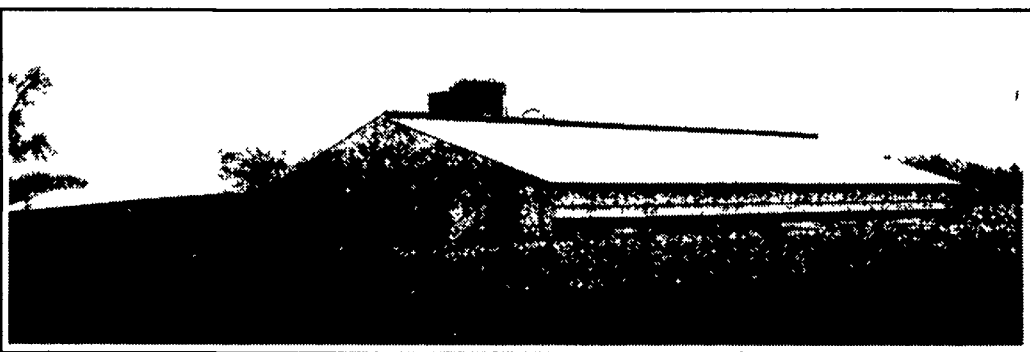
- Qualified Service Personnel
- Sound Genetic Program
- Building Management/Environmental Monitoring
- Facility Planning
- Technical Support
- Cash Flow Projections
- Competitive Contract Payments
- Purina Feeding Programs

For more information Call  
**1-800-518-6458 Ext. 292**

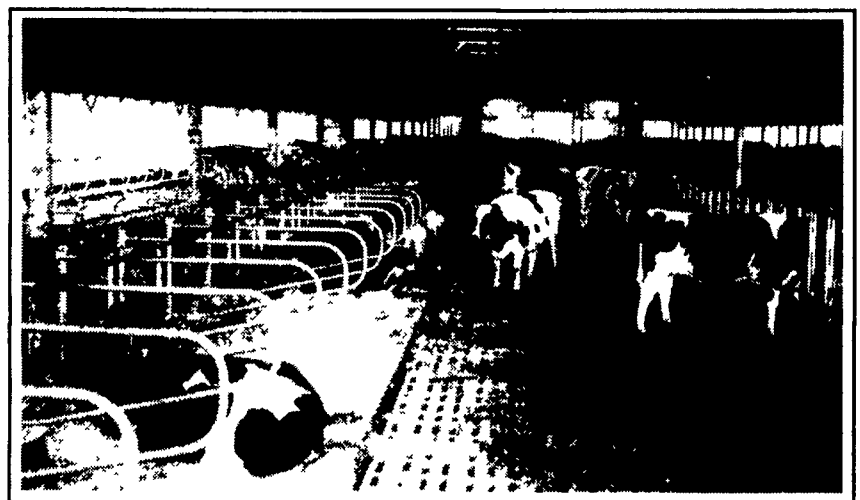
**Purina Mills, Inc.**  
Serving The Needs Of Agriculture



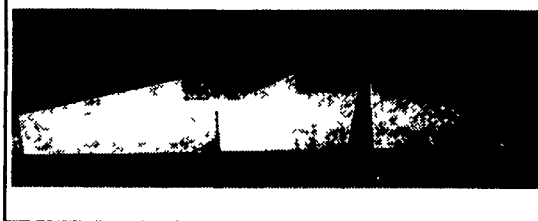
477 East Farmersville Rd.  
New Holland, PA 17557  
**(717) 355-2361**



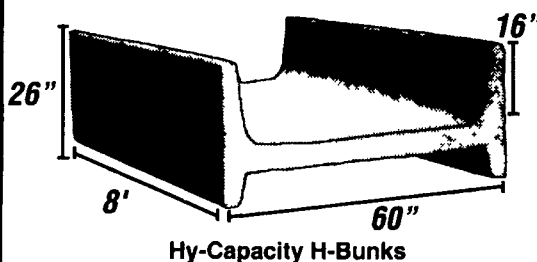
**Concrete Slatted Free Stall Barn**



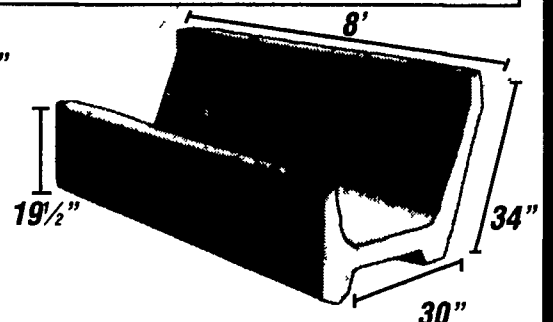
**Long Core Cattle Waffle Slats**



**Precast Concrete T-Wall Bunker Silos or commodity buildings built to suit your needs. Bunkers available in 8 Ft. or 12 Ft. High**



Hy-Capacity H-Bunks



Slant Back J-Bunks

End Sections Available For Feed Bunks

Give us a call for more information on hog, beef, dairy and heifer barns.