

MAILBOX MARKET FOR SALE

1990 Ford F700 diesel 6 spd trans 16 stake body \$6,500, Dauphin Co 717-939-7552

NH 455 mower w/9 horse eng, A1 cond, tobacco lath Lanc Co Eli S Glick 248A Monterey Rd Bird-in-Hand, PA 17505

Office trailer 4x8 gas heater, \$950 storage trailer, 32x8, \$275 Tufftex toolbox p/u truck \$45, Mont Co, 215 886-5000

20-20 earth metal disc blades, BO, approx 8 ton 2nd & 3rd cutting, alf grass hay, \$125 ton Southern Northumberland Co, 570-758-2136

Old pine bds over 100 LF, \$60, antique robe bed, cannon ball raised panel, \$150, alum storm 5'W6 8'H \$100 Bucks Co 215-794-7946

Case 220 hyd drive & deck, rebuilt 10 HP Kohler exc, \$1,095, 1988 Peterbuilt single axle tractor rebuilt & guaranteed, Cummins, \$5,000, York Co, 717-741-3974

Bale wagon 8'x16' wood deck steel side racks, gates both ends, Gehl running gear, \$875 lve message Lanc Co 717-664-4707

Old cast iron tub, \$100, cooler box fits in p/u truck, \$100 8x12 storage shed, \$950, Mont Co 215-679-5585

Tires set of 13-6 36 tractors tires new w/new tubes, \$300, Franklin Co, 717-264-4555

Case 1835C skid loader diesel 2 600 orig hrs, strait clean machine, utility bucket, rubber 90%, \$6,900 OBO, Berks Co, 610-944-9276

1 pr S10 studded snows mtd, \$45 68-69 Chevelle hood, v g c, \$45 BO, 80 Firebird hood, \$35, 73 p/u GM L/S fender, Hunt Co, 908-236-6658

Tree skidder JD 540, 1989 hydro ax, 16' tree shear, Strasburg, VA, 540-465-4423, 540-465-8363

Irrigation 4" pipe sprinklers fittings, \$1,500 PTO, pump, \$1,200 round bale mover, \$500, 6' rotovator, \$500, Tipi, \$300, Loudoun Co, VA, 540-882-3996

1945 Ford 2N, complete needs restoration motor runs, \$900 OBO, Ferg 2 bottom plow, \$100, Berks Co, 610-367-5973

JD 1010 crawler, 6 way ground blade plus 10 snow blade, eng overhauled, new pins & bushings \$5,500 Perry Co 717-789-3818

Warn 8 000 lb 12V winch, receiver quick mount, \$450, 4' PBZ loader bucket forks, \$150, Leb Co, 717-861-7366

2 4100 Miller Pro silage wagons, 10 ton Wenger running gear, Jerico fiberglass, topper off 91 Ford 8' bed, Leb Co, 717-865-4988

Chicago 8 sheet metal brake, Di-Acro #2 hand panch, 3' 16 ga box brakes, Di-Acro 12" roller body shop spot welder, York Co 717-792-9282

1998 Gehl 5635 skid steer, 1 000 hrs, good cond, counter balance wt on rear, \$15,000 Harford Co 410-557-0366

3208 Cat 210 HP factory rebuild, low mileage, exc, complete take out, \$2,800, 6 6 Ford 185 HP, low mileage, \$2,500, Blair Co, 814-942-3821

Horse trailer, 18' stock bumper pull, new paint mats \$3,200, Morgan QH mare 12 yrs, rides good, \$1,200, Balt Co, 410-374-9795

NH 900 harvester w/auger base heads, 411 discbine, 488 haybine 18 4 38 tractor tires on rims, Weblier feedcart Lanc Co, 717-367-0799

13 Antique wooden berry crates, BO, house trailer axle w/wheels, \$50, baby chick gas brooder, \$50, York Co, 717-244-0770

Brother 2 pc WP3600D word processor w/built in 3 5" floppy disk drive, separate 14" monitor, built in spreadsheet, \$50, Sch Co, 570-345-4460

7 polysquare calf hutches, 150 each silage dump wagon 8x16x6, 10 ton demco gear midwest lift, \$3,150, Chester Co, 610-942-4046

Tools for metal lathes & milling machines, chucks, vises, tool post grinder, collects, machinist tools, much more, Leb Co, 717-273-3982

Gehl HA900 hay head, good cond, shed kept, 2 Firestone 16 9R26 radial, all traction FWD 35% tread, BO, Leb Co, 717-866-7907

From our herd 4 late feeder steers, 1 late feeder heifer, approx av wt 400 to 450, very gentle, all started on grain, call 7-8 p m, Sch Co 570-345-4489

Antique horse buggy w/fold down top & rubber on wheels good cond, ready for use asking \$800 OBO Franklin Co 717-328-5713
31/2 yr old black Limousin bull should be used on lrg cows calves weigh 500#, 6 mos old, Northumberland Co 570-649-5728

AKC Rottweilers, 3 mo old female 4yr old male 2 & 3 yr old females Chester Co 610-857-0197

Jeep Grand Cherokee, 6 cyl, 4 0, auto 4x4, forest green color 42k mi like new Lehigh Co, 610-756-6071

Cole 12 MX 1 row vegetable, pumpkin seed planter, dry fert planted less than 50 acs extra plates, vg shape, \$725 Bucks Co, 215-536-8859

Allis Chalmers 2 row no til 3 pt corn planter, dry fert insecticide boxes, good shape, extra plates, \$900, Bucks Co, 215-536-8859

1984 Ford F250 HD 4x4 diesel, 4 spd, 7'6" Swenson plow flatbed tool boxes 96k mi eng & drive train rust, \$675, Harford Co, 410-692-5350

MF 3-16 plow, \$1,500, Ford harrow 12', \$350, 9 teeth Chicah plow, \$3,500, CIH 26 teeth harrow, \$2,200, transport, Lanc Co, 717-733-8708

1000 Mustang skid loader, \$2,000, Case 1737 skid loader, \$2,500, IH 3200 skid steer, \$2,500, small Bobcat 371 skid loader, \$3,500, Case 1835B diesel skid steer, \$5,500, 717-354-0266

37 Isuzu NPR 16' Morgan body, ref, JD LA w/plow, Camden Co, 856-767-7843

Sears 20 gal twin cyl 3 HP, 220V portable air compressor, \$90, Carroll Co, 410-374-4957

Int 450 gas FH, good cond, \$3,800, white horse right hand, 2 bottom hyd plow, good cond, lve message, Kent Co, 302-678-0256

Linc welder model DC250AS w/VF4 Wis eng, needs piston, \$200, parting out 1987 Bronco, 3 ph bottom plow, \$50, Burl Co, 609-893-6425

Wrestling mats, 57"x115", exc cond, \$100 each, plastic truck bed liner for 1995-2000, 8' Dodge, \$125, York Co, 717-993-9090

Birds, 12 Cockatiels, white faced cinnamons, pearls, grays, breeding prs & singles & cages, Cumb Co, 217-776-3624

Breeding age Holstein heifers, \$1,150 Adams Co 717-528-4566

Tire chains, Homelite chain saws 12 16'x20 bar alum grain or snow shovels, flexibe flyer & lightning guider sleds Lanc Co 717-665-5848

Digital price computing scales, 15 lb cap, battery or elect \$160, PP Weaver, 9077 Possum Hollow Rd Shippensburg, PA 17257, Franklin Co, 717-530-0406

IH C truck 1981-1800 series, good cond, good rubber, no rust 14' van bed, like new curb door roll up, rear door under CDL, \$2,750, Leb Co, 717-469-2138

Antique 1948 standard twin garden tractor on steel, complete w/owner's manual plow, wheel wts, cultivators & accessories, Sch Co, 570-386-5434

JD 730 diesel w/fenders, PS good tin, exc rubber, call 717-259-0203 or 717-731-8401 after 4 p m, Adams Co

Ford 9N tractor, good cond, \$2,000 OBO, call early morn, Perry Co, 717-589-3212

Forklift, 4,000 lbs, Clark 1967 model, \$1,000 OBO, 22 ton punch press, running, \$500, York Co, 717-932-2000

Zook 12' manure elevator w/elect motor, Chester Co, 610-286-9467

Int 284 roll bar canopy v.g., 4750 horse quality hay, sn, sq corn silage haylage, hi moisture corn Bedford Co, 814-839-4271
3 pt sq bale chopper \$500, riding lawn mowers \$50 each Contico black tool box, full size p/u, \$60 bed mat, 6', \$20, Carroll Co, 410-775-7324

Restored dog power w/walking beam for churn \$875, 6 anvils, \$75-\$200 each fuel tank "Otto Philada", \$500, sheet metal tools, Montg Co, 215-256-9925

Case 1644 combine, 2,100 hrs MUST SELL, Case 4690 tractor, NICE, Case 2390 tractor w/duals, 4,000 hrs MF 820 disk wings & 24 rolling harrow, 1980 IH dump truck w/grain shute, Salem Co 856-935-6104

Woods L 306 under mount mower, 72' w/mounting for Farmall C, v.g cond, \$700 OBO, northern Lanc Co, 717-665-5526

Arctic snowmobile 440, runs good, \$300, York Co, 717-755-1468

AC 160 40 HP diesel, 2,781 hrs, 1 owner, rebuilt pump & injectors, completely gone over by dealer, \$5,950, Lanc Co, 717-768-7074

Ear corn, \$85T, milk cooler, 210 gal compr, used very little, \$550, Maytag sq tub wringer washer, \$110, Adams Co, 717-528-4566

NH 770 pull type harvester no heads, good cond Lanc Co 717-426-2530

Myers 71/2 power angle plow w/joy stick, its 80 to 91 Ford, \$995 York Co, 717-246-3001

Vg quality horse or dairy hay, lrg or sm sqs, lve message 717-786-0876 or call 717-786-6252 8 a m, Lanc Co

1989 Dodge Dakota 4x4, 6 cyl auto, \$1,500 neg, 6 person Cal Spa, \$3,500 neg, pool table, \$1,000 neg, Col Co, 570-284-8286

50 gal fuel tank, elect pump for p/u truck, \$350, Lanc Co, 717-786-0363

3 Kawasaki race bikes, rolling chassis, \$800, rolling chassis, \$1,000 complete bike, \$2,750, for more details call 6 30 p m, Bucks Co, 215-538-7178

Stihl chain saw chain sharpener, exc cond, \$350, Lanc Co, 717-786-0363

5-16" model A Ford wire wheels, \$175, Monroe Co, 610-681-4245

5 1966 Ford Galaxie hub caps, \$150, Monroe Co, 610-681-4245

More Mail Box Markets Appear On On Page B27

Hard Water?

- No salt No plumber
- Cleans your pipes
- Easy to install
- No maintenance
- 5 year warranty
- "We guarantee it will work or your money back"

Costs only \$349.00

Eco-Tech 717-337-9325

NEED YOUR FARM BUILDINGS PAINTED?

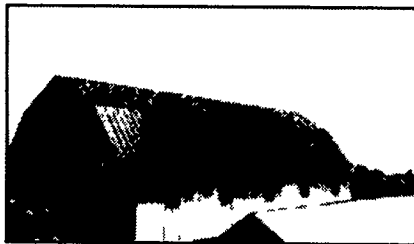
Let us give you a price!
Write: **Daniel's Painting 637-A Georgetown Rd. Ronks, PA 17572**
(or leave message) **717-687-9520**
Spray on and Brush in Painting

JAY ZEIGLER Standing Seam Metal Contractor

Since 1963 "Simply The Very Best Roof Available"

FREE Estimates

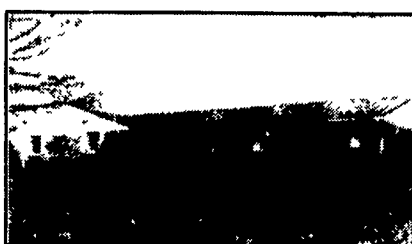
Call For Information



Use on Barns Or Garages



Light Commercial.



Reroof w/Metal

ADVANTAGES:

- Roof can last for 100 years - cost efficient
- Can be installed over existing roof (Asphalt, roll roofing, wood shingles)
- Is environmentally safe
- Beauty - colorful (galvanized, 40 lb. terne, terne-coated stainless, and painted steel in over 20 different colors.)
- Can be installed on flat roof with as little as 1/2" pitch per foot.
- Good for homes, farm buildings, garages, commercial buildings.
- Sheet in continuous length installed with concealed fasteners with double lock seam for water tight application.

PO Box 231 Rehrersburg, PA 19550

(717) 933-4666 (717) 933-5305 FAX/PHONE



New Construction

FARM BUILDINGS NEED PAINTING?

Let Gahring Make Those Buildings **SHINE**
"The Farm Painting Specialist"



We Are The Fussy Ones

"NO JOB WE CAN'T HANDLE"

We Have The Equipment To Do Your Job

COATINGS FOR:

- Roofs • Wood, Steel and Masonry Structures

OUR SPECIALTIES ARE:
AGRICULTURE - COMMERCIAL - INDUSTRIAL - CHURCHES
• Barn Painting • Milk House • Roof Coating
• Water Proofing Silos • Stucco Farmhouses

The Job Must Be Done To Your Satisfaction

For FREE Estimate CALL

Gahring's

PAINTING & WATERPROOFING
636 East End Ave., Lancaster, PA
717-397-4187