

PSACF Conducts Convention This Week

MICHELLE KUNJAPPU
Lancaster Farming Staff
HERSHEY (Lancaster Co.)
— The Pennsylvania State Association of County Fairs and the Pennsylvania State Showmen's Association conducted their 90th annual convention this week.

The convention ran from Wednesday through Saturday at the Hershey Lodge and Convention Center, Hershey.

Educational opportunities were provided for convention attendees. Seminars included a how-to workshop on getting grants for fairs, explaining the responsibilities of individual in the decision-making process of running a fair, an update on trucking and trucker regulations, improving presentation, finding new contacts and sharpening sponsorship skills, and

protecting the fair against terrorism and other assaults.

Approximately 100 attendees took advantage of the opportunity to brush up on skills or learn gain knowledge in a new category of fair classes at the annual Judges School. Seminars included certification in vegetables; quilting and needlework; nuts, fruits, and berries; flowers; art; crocheting and knitting; photography; and crafts and ceramics.

A few roundtable topics included seminars which taught attendees how to use the fairgrounds "more than just fair week and winter storage," and how to deal with "problems of local fairs overlapping dates."

Watch *Lancaster Farming* for scheduled coverage of the fair queen competition and more in-depth coverage of the Judges' School.

Va. Farm Show

(Continued from Page A1)

With sheep production, however, the two counties have been almost neck and neck. Augusta County actually leads the state in sheep production.

Rick Heidel, animal science agent from Augusta County, said of the upcoming event, "If it lures the people, it will grow. It's a very convenient location — almost central to I-81 and I-64. There is a pretty good supply of motels for people who want to stay overnight," he said.

Expoland Manager Judy Armstrong sounds exuberant about the Virginia Farm Show. "We are excited," she said. "It's going to be fun."

"It is centrally located. We are only four miles from I-81."

She learned the buildings are completely sold out and several tents will be set up and heated.

"They expect a big crowd," Armstrong said.

On 200 acres, the nonprofit

Augusta Expoland hosts livestock sales, antique expos, coin and stamp shows, gun shows, dog shows, crafts shows, tractor and monster truck events, rodeos, and concerts in the amphitheater. The facility that opened in 1969 continues to grow and this year will see an all-purpose building with dimensions of 100 by 102-feet added.

Interested persons may learn more about the Virginia Farm Show and scroll down the exhibitor's list by visiting www.virginiafarmshow.com on the Internet.

Expoland is located just off Interstate 64 at Exit 91. If traveling north or south on Interstate 81, watch for Interstate 64 at Exit 221 and turn east toward Waynesboro, Charlottesville, or Richmond.

On the Internet, Augusta Expoland is found at www.augustaexpo.com.

BEEF

IT'S WHAT'S FOR DINNER.

DURABED[®]

COW MATTRESS

"The Ultimate In Cow Comfort"

The only one of its kind!

Heaviest... Strongest... Driest... Most Effective... The BEST!



NEW MOO 2[™]

Freestall Cow Mattress System

Economical Alternative for Cow Comfort

NEW DURAMAT[™]

"High Performance Comfort for the Traditional Barn"
SOLID RUBBER COMFORT

2 Sizes 48"x65" & 48"x72" 5 year manufacturer's warranty
Random Patterned Surface 1-3/16" vulcanized comfort
Grooved bottom for more softness and efficient drainage

No Seams...
No Interlocks...
No Problems...

ALLEYMAT[™]

Continuous
Rubber Flooring

Single Piece Widths
2 ft. to 6 ft.
Single Piece Lengths
to 500 ft.

NORTH BROOK FARMS

Toll Free: 877-624-2638

Come See Us At The VIRGINIA FARM SHOW
January 22 & 23 • Fishersville, VA - Augusta Expo Land

Greider & Witmer Associates, Inc.

Your Complete Tax, Accounting and Investment**
Service for Individuals, Small Businesses and Farmers

We Are...

Tax Return Preparation*

- Individual, Partnership, Corporate, Fiduciary
- Tax Planning
- Electronic Filing

Accounting and Payroll

- Bookkeeping and Financial Statements
- Payroll and Benefit Administration
- Accounting Software Installation and Support

Investment Services**

- IRA's and Retirement Plans
- Investments** with a Goal
- Life and Long-Term Care Insurance
- Annuities



Susan Greider
Enrolled Agent

2733 Willow Street Pike
Willow Street, PA
(717) 464-2951
Fax (717) 464-2013
greiderstaxsvc@msn.com

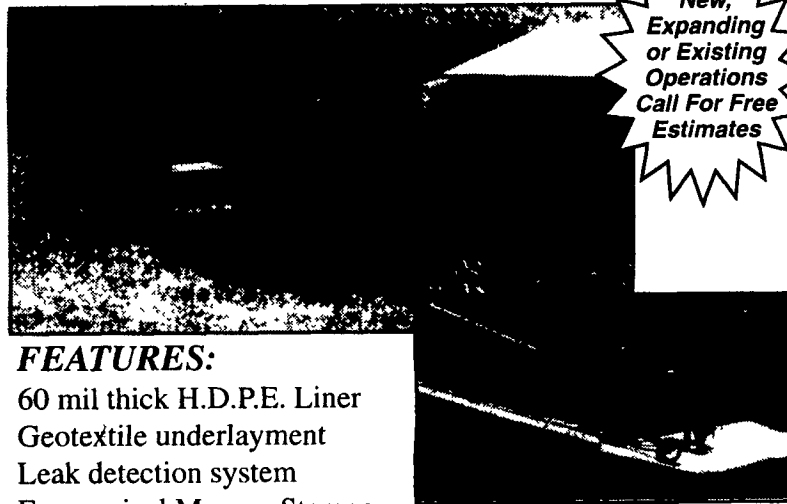


Roxanne Witmer
Enrolled Agent

** Securities offered through Royal Alliance Associates, Inc.
Member NASD & SIPC

SITE EXCAVATION

Installation of H.D.P.E. Liner Systems for:
Dairy, Hog, and Veal Manure Storage Facilities
Golf Course and Recreational Ponds



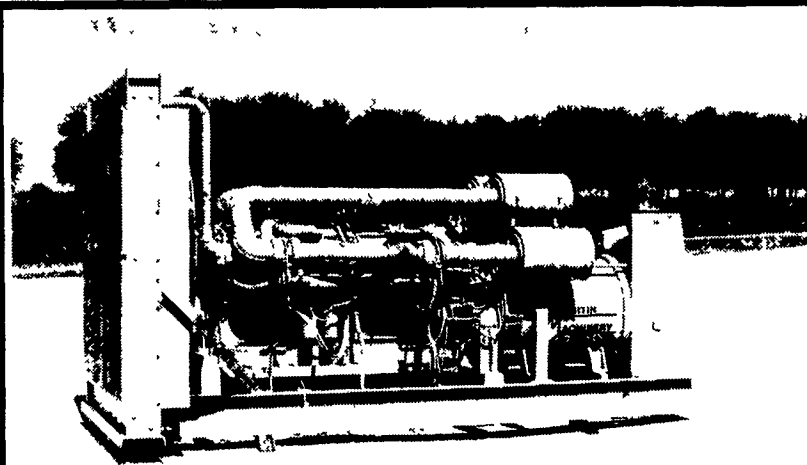
New,
Expanding
or Existing
Operations
Call For Free
Estimates

FEATURES:

- 60 mil thick H.D.P.E. Liner
- Geotextile underlayment
- Leak detection system
- Economical Manure Storage
- Seals manure in, subsurface water out
- Concrete ramp for manure agitation and pumping

MANADA CONSTRUCTION CO.

1942 Camp Swatara Road • Myerstown, PA 17067
Ph; (717) 933-8653 • Fax: (717) 933-8078



GENERATORS

Sales ★ Service ★ Rentals
Complete Generator Systems
PTO • Portables • 2-1600 KW
We Service It If You Have It,
And Sell It If You Need It.



MARTIN
MACHINERY

34 W. Mohler Church Rd.
Ephrata, PA 17522

Tel: 717-738-0300
Fax: 717-738-4329

With sheep production, however, the two counties have been almost neck and neck. Augusta County actually leads the state in sheep production.

Rick Heidel, animal science agent from Augusta County, said of the upcoming event, "If it lures the people, it will grow. It's a very convenient location — almost central to I-81 and I-64. There is a pretty good supply of motels for people who want to stay overnight," he said.

Expoland Manager Judy Armstrong sounds exuberant about the Virginia Farm Show. "We are excited," she said. "It's going to be fun."

"It is centrally located. We are only four miles from I-81."

She learned the buildings are completely sold out and several tents will be set up and heated.

"They expect a big crowd," Armstrong said.

On 200 acres, the nonprofit Augusta Expoland hosts livestock sales, antique expos, coin and stamp shows, gun shows, dog shows, crafts shows, tractor and monster truck events, rodeos, and concerts in the amphitheater. The facility that opened in 1969 continues to grow and this year will see an all-purpose building with dimensions of 100 by 102-feet added.

Interested persons may learn more about the Virginia Farm Show and scroll down the exhibitor's list by visiting www.virginiafarmshow.com on the Internet.

Expoland is located just off Interstate 64 at Exit 91. If traveling north or south on Interstate 81, watch for Interstate 64 at Exit 221 and turn east toward Waynesboro, Charlottesville, or Richmond.

On the Internet, Augusta Expoland is found at www.augustaexpo.com.