

(Continued from Page 10)

SILAGE ENTRIES

Table 4. Silage performance of early medium-season (Maturity Zone 2) hybrids.

Brand-Hybrid	Plant Yield ¹ (tons/acre)	Dry Moisture ² (%)	Matter Yield (tons/acre)
Seedway E538	31.3	61.0	10.9
Dekalb DKC61-24	32.1	61.9	11.2
Seedway E622	29.4	62.6	10.3
Hyttest HT7415	23.3	63.3	8.1
Hyttest HT4602	26.1	63.6	9.2
Seedway E670 L	26.6	64.1	9.3
Golden Harvest H-89	32.0	64.3	11.2
Doebler's 638 XYG	27.7	64.7	9.7

Dekalb DKC60-08	24.9	65.2	8.7
Doebler's HC540	28.8	67.8	10.1
MEAN	28.2	63.8	9.9
LSD (0.05)	2.9	3.8	1.0

¹ Yields are standardized to 65% moisture.

² Plant moisture at the time of harvest.

LOCATION DETAILS

Table 5. Location, cooperator, planting date, harvesting date, growing degree days¹ (GDD) for 2001 season, and 30-year average GDD for early medium-season (Maturity Zone 2) hybrid tests

Location (County)	Cooperator	Planting Date	Harvest Date	GDD (2001)	GDD (30-yr Avg)
Blair	Dave Clark	May 10	October 26	2 580	2 483
Butler	Albert Veltton	May 15	October 31	2 449	2 318
Centre (grain)	Penn State	May 9	October 29	2 466	2 343
Centre (silage)	Penn State	May 9	September 25	2 296	2 175
Clinton	Charles Dottler	May 8	October 25	2 603	2 490
Columbia	Craig Richards	May 7	October 19	2 678	2 581
Lycoming	Charles Ulmer	May 10	November 1	2 536	2 423

¹ GDD data calculated by ZedX, Inc., 389 Rolling Ridge Dr., Bellefonte, PA 16823. GDD are calculated from the planting date until harvest or through October 8, whichever occurred first. Thirty-year averages are calculated using the same dates.

(Turn to Page 12)

NCGA Urges Farmers To Tell Congress: Pass TPA

ST. LOUIS, Mo. — Trade Promotion Authority (TPA), or "Fast Track" as it was previously called, has made frequent appearances in the headlines lately.

The National Corn Growers Association (NCGA) has been a staunch proponent of TPA and is encouraging producers to tell Congress to give this international marketing tool to President George W. Bush.

TPA's advocates have discussed the need to grant TPA powers to the president this year, because the United States has been at a competitive disadvantage in trade talks since these powers expired in 1994. For example, U.S. growth in agricultural exports — such as the corn and tractor in the background — are hampered by high tariffs on U.S. products, which greatly reduce American access to foreign markets.

NCGA President and Walsh, Colo., corn grower Tim Hume said the U.S. is being left behind without TPA.

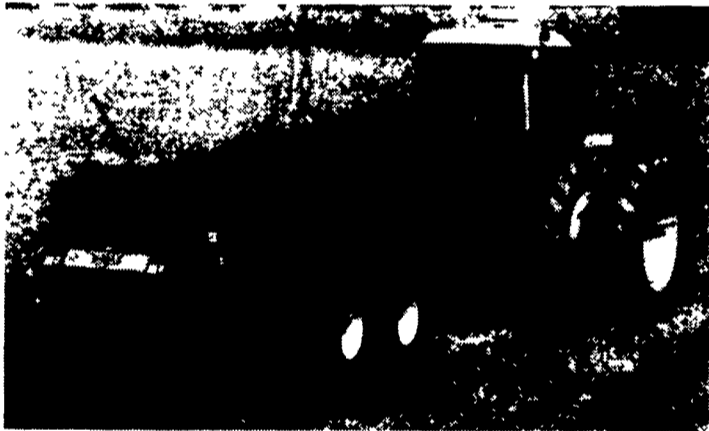
"There are more than 130 preferential trade and investments agreements in the world today," he said, "and due to lack of trade authority, the United States is only party to two."

"For example," Hume continued, "the European Union (EU) has free trade agreements set up with 27 different countries, 20 of which were set up within the last 10 years. As of right now, the EU is also working on 15 new accords. That's why it is so important for growers to contact their elected leaders and tell them they support TPA. We cannot continue to be left behind on the world stage."

NCGA urges corn growers and other U.S. trade supporters to contact their elected officials supporting support of TPA. To contact your senator and representatives, click on the Action Alert on the NCGA Website home page, www.ncga.com. More information on NCGA's stance on TPA and other trade issues is available on the NCGA Website at <http://www.ncga.com/trade/main/index.html>.

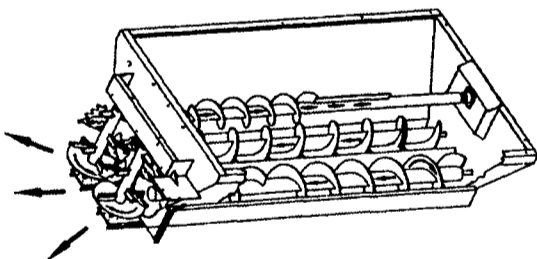
Meyer

Meyer Super Spreader V-Max & Industrial Models Patented "Straight-Line" Flow



Benefits of the "Straight-Line" System

- Less horsepower required
- Even, consistent application
- No wind-carried manure; tractor and spreader stay clean
- Handles pen-packed to liquid
- Easy cold weather clean up
- No leaking on roads



SIZES AVAILABLE
From 260 bu. to 700 bu.

SPECIAL RETAIL FINANCING AVAILABLE

See Your Local Dealer Today.

OPTION 1

PAYMENT
WAIVER TILL
Jan. 1, 2003

OPTION 2

LOW RATE
FINANCING
18 Monthly Payments

OPTION 3

BIG CASH
DISCOUNTS

0.0% APR

* On All Meyer Products Over \$1,000 * To Qualified Buyers
* Call Local Dealer for Complete Details

Meyer - Your Truck Box Specialists



New 8100 "BOSS"
8' Wide (inside) 22' Long
Unloads in 30 Seconds

BUY NOW!

**BINKLEY & HURST
BROS., INC.**
133 Rothsville Station Rd
Lititz, PA

**MESSICK
FARM EQUIPMENT**
Rt 283, Rheems Exit
Elizabethtown, PA

**DEER CREEK
EQUIPMENT, INC.**
6600 Limestone Rd
Oxford, PA
720 Wheeler School Rd
Whiteford, MD

**SANDY LAKE
IMPLEMENT
CO., INC.**
RD 3,
Sandy Lake, PA

**HISTAND'S
FARM & HOME**
RD 1, Box 231
Rome, PA

**MEYER'S
IMPLEMENTS, INC.**
400 N Antrim Way
Greencastle, PA

**LONE MAPLE
SALES & SERVICE**
RD 2
New Alexandria, PA

**WALTEMYER'S
SALES &
SERVICE, INC.**
RD #3, Box 43-Bm,
Red Lion PA

**ICKES
FARM SUPPLY**
Route 869 West
Osterburg, PA

**MIFFLINBURG
FARM SUPPLY**
Route 45 East
Mifflinburg, PA

FARM EQUIPMENT BUYERS TRUST THE NAME MEYER!