

Leesport Livestock Auction

Leesport, Pa.
January 16, 2002

Report Supplied By USDA

CATTLE 257, CALVES 173, HOGS 71, SHEEP 37, GOATS 8. LAST WEDNESDAY CATTLE 171, CALVES 141, HOGS 82, SHEEP 5, GOATS 3.

CATTLE: Compared with last Wednesday's auction, slaughter steers sold mostly steady. Slaughter heifers were .25-.50 higher. Slaughter cows traded .50-1.00 lower. Slaughter bulls trended steady.

SLAUGHTER STEERS: Choice 2-3 few 1290-1465 lbs 69.25-70.00, returned to feed 51.50-61.00. Select 1-3 58.00-68.75. Standard 1-2 52.50-55.00.

HOLSTEIN STEERS: Choice 2-3 1205-1575 lbs 54.75-58.75, returned to feed 53.00-54.50. Select 1-2 48.00-55.00. Standard 1-2 45.00-49.50.

SLAUGHTER HEIFERS: Choice 2-3 1160-1300 lbs 64.75-67.25. Select 1-3 58.00-62.25. Standard 2 individual 49.50.

SLAUGHTER COWS: Breakers 75-80 percent lean 37.00-41.50. Boners 80-85 percent lean 36.50-40.50. Lean 85-90 percent lean 35.00-39.50. Shells down to 32.50.

SLAUGHTER BULLS: Yield Grade 1 1285-1960 lbs 50.75-64.00. Yield Grade 2 1060-2620 lbs 41.50-54.50.

FEEDER STEERS: Medium 1 individual 530 lbs 82.00. Medium 2 one head 425 lbs 60.00.

FEEDER HEIFERS: Medium and Large 2 605-930 lbs 45.00-63.00 Large 3 Holsteins 245-380 lbs 65.00-75.00

FEEDER BULLS: Large 3 Holsteins 755-975 lbs 40.00-48.00.

CALVES: Compared to last week's auction, vealers sold steady to 5.00 higher. Holstein bulls returning to the farm were 20.00-30.00 higher, while Holstein heifers traded steady to 25.00 higher.

VEALERS: Standard and Good 75-125 lbs 32.50-55.00. Utility 75-115 lbs 5.00-30.00. RETURNED TO FARM: Holstein bulls Number 1 90-120 lbs 125.00-147.50. Number 2 85-125 lbs 70.00-132.50. Holstein heifers Number 1 90-120 lbs 460.00-540.00. Number 2 75-105 lbs 130.00-385.00. Beef type bulls and heifers 70-95 lbs 110.00-180.00.

BARROWS AND GILTS: Prices were 1.00-2.00 lower than last Wednesday. PERCENT LEAN WEIGHT PRICE 45-50 240-280 lbs 35.50-36.25 40-45 325-360 lbs 30.00-31.00.

SOWS: US 1-3 One head 470 lbs 24.50 Medium One head 200 lbs 25.00

BOARS: 235-315 lbs 15.00-19.00 555-720 lbs 13.50-14.50

FEEDER PIGS: All sold per cwt. US 1-3 32 lbs 72.50 45-65 lbs 58.00-64.00 105-110 lbs 56.00-62.00

SLAUGHTER LAMBS: Choice 45-75 lbs 87.50-102.50; 80-130 lbs 72.50-97.50.

SLAUGHTER SHEEP: Utility 1-3 25.00-29.00. Yearlings 50.00-70.00.

GOATS: All sold by the head. Billies: Large individual 100.00. Nannies: Medium 45.00-80.00. Kids: Large one head 42.50.

Westminster Livestock

Hagerstown, Md.

Report Supplied By Auction
January 15, 2002

SLAUGHTER COWS: 102 HEAD, 1.00 LOWER. BREAKERS 38.50-42.00, BONERS 37.00-40.50, LEAN 33.00-37.00, THIN 33.00 DOWN.

BULLS: 9 HEAD. YG#1 1160 LBS. AT 51.25, YG#2 1500-2150 LBS. 51.00-53.00; LOW DRESSING 1100-1200 LBS. 45.00-47.50.

FED STEERS: 18 HEAD. HIGH CHOICE TO PRIME 1200-1475 LBS. 68.00-70.50, CHOICE 2-4 1100-1450 LBS. 65.00-68.00, 1650-1700 LBS. TO 62.50, LOW CHOICE 1100-1450 LBS. 60.00-64.00.

FED HEIFERS: 26 HEAD, 2.00 HIGHER. HIGH CHOICE TO PRIME 1100-1450 LBS. 67.00-70.00, YG3-4 64.00-67.00, 3 HEAD 1500-1575 LBS. 61.00-65.75, SELECT TO LOW CHOICE 1100-1300 LBS. 60.00-63.75.

CALVES: 138 HEAD. HOLSTEIN BULLS RETURNING TO FARM 5.00-10.00 HIGHER. #1 94-120 LBS. 125.00-145.00, 84-92 LBS. 115.00-132.00; #2 94-120 LBS. 100.00-125.00, 80-92 LBS. 70.00-110.00; HOLSTEIN HEIFERS FEW OFFERED. #1 85-110 LBS. 510.00-565.00, #2 75-90 LBS. 100.00-230.00; BEEF X BULLS TO 160.00.

BUTCHER HOGS: 40 HEAD, 1.00 LOWER. #1 AND 2 240-270 LBS. 35.00-37.00, #1 AND 3 280-350 LBS. 30.00-34.00.

SOWS: 500-550 LBS. TO 27.25. BOARS: 400-750 LBS. 12.00-13.25. STOCK CATTLE: 143 HEAD,

ACTIVE BIDDING, HIGHER PRICES. STEERS MED. AND LARGE FRAME 300-500 LBS. 87.00-91.00, 500-650 LBS. 81.00-87.00, 900-1000 LBS. TO 66.00, 8 HEAD 1000-1050 LBS. 74.00-75.00.

HEIFERS: MED. AND LARGE FRAME 300-500 LBS. 77.00-90.00, 500-600 LBS. 65.00-76.00, 600-700 LBS. 64.00-73.00, 700-900 LBS. 57.00-62.00.

BULLS: MED. AND LARGE FRAME 200-400 LBS. 96.00-101.00, 400-600 LBS. 70.00-83.00, 600-700 LBS. 58.00-65.00.

SHEEP: 25 HEAD 25.00-55.00. LAMBS: 21 HEAD, 10.00-15.00 HIGHER. HIGH CHOICE TO PRIME 100-120 LBS. 82.00-92.00, 80-95 LBS. 90.00-94.00, GOOD 50-70 LBS. 91.00-101.00, HIGH CHOICE 130-160 LBS. 59.00-68.00, 170-185 LBS. 50.00-57.00.

GOATS: 53 HEAD. LARGE BILLIES AND WETHERS 87.00-139.00, MEDIUM 68.00-90.00, LARGE NANNIES 50.00-95.00, MEDIUM 45.00-85.00, SMALL FLESHY 50.00-60.00.

PIGS AND SHOATS: 63 HEAD. BY THE HEAD, 40-60 LBS. 22.00-30.00; BY THE LB. 28 HEAD 35-40 LBS. 65.00-75.00; STOCK BOARS 13 HEAD 300-350 LBS. 15.00-20.00.

Belknap Livestock

Belknap, Pa.

Report Supplied By USDA
January 16, 2002

CATTLE 119, CALVES 102, HOGS 44, SHEEP 20, GOATS 11 LAST WEDNESDAY CATTLE 86, CALVES

99, HOGS 63, SHEEP 5, GOATS 34

CATTLE: No comparison with last Wednesday's auction.

SLAUGHTER STEERS. Choice 2-3 1300-1390 lbs 66.25-66.50 Select 1-3 56.25-62.25. Standard 1-2 50.00-53.75

HOLSTEIN STEERS: Standard 1-2 43.50-46.25.

SLAUGHTER HEIFERS: Choice 3 individual 1188 lbs 66.75. Select 3 one head 59.00. Standard 1-2 42.50-47.75

SLAUGHTER COWS Breakers 75-80 percent lean 38.00-40.00. Boners 80-85 percent lean 34.50-38.00 Lean 85-90 percent lean 30.50-34.50.

SLAUGHTER BULLS Yield Grade 1 9087-1585 lbs 50.75-57.00. Yield Grade 2 970-2650 lbs 43.00-50.50.

FEEDER STEERS. Medium 2 few 325-355 lbs 65.00-75.50 KEEDER HEIFERS: Medium 1 couple 415-510 lbs 78.50-79.00.

VEALERS: Choice individual 142 lbs 97.00 Good 140-165 lbs 62.00-75.00 Standard and Good 95-120 lbs 47.50-65.00; 75-85 lbs 35.00-62.50 Utility 60-95 lbs 16.00-35.00

RETURNED TO FARM Holstein bulls Number 1 90-130 lbs 105.00-137.50, one head up to 142.00 Number 2 80-130 lbs 67.50-105.00 Holstein heifers Number 1 88-125 lbs 425.00-600.00, individual 650.00. Number 2 70-85 lbs 225.00-310.00. Beef type bulls and heifers 60-130 lbs 120.00-220.00.

BARROWS AND GILTS: PERCENT LEAN WEIGHT PRICE 40-45 215-305 lbs 46.00-53.00

SOWS: US 1-3 Couple 518-604 lbs 30.00-41.00

FEEDER PIGS All sold by the head US 2-3 20-35 lbs 15.00-26.00 40-45 lbs 30.00-35.00

It's Gotta Be Garst®

QUALITY

With Garst® alfalfa, you get improved feed value and more tonnage. Garst's total package is built on a foundation of quality.

With Garst alfalfa varieties like 631, 6420, and AgriPro Feast+EV, you'll get just the right combination of winter survival, disease resistance, and high yield potential...all the performance features you expect from Garst. When it comes to quality and yield, it's gotta be Garst!

Featured Variety	DRI	Description
631	26/30	Fast growth and recovery after cutting for top performance under aggressive management. Proven leader
6420	27/30	High yielding variety for maximum tonnage. Fast regrowth and recovery make 6420 an ideal choice for aggressive cutting schedules
AgriPro Feast+EV	29/30	An advanced, high yielding selection with excellent disease resistance and stand persistence. Leafy, dark green forage from a broader, deep set crown for increased traffic tolerance

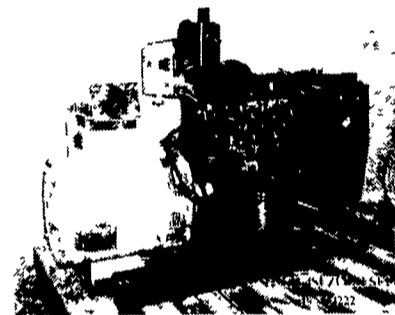
Learn more.
Call your local Garst Guy toll-free:
1-888-GO-GARST

Garst
Modern Science...Traditional Values

www.garstseed.com

©2001 ADVANTA USA, Inc. Garst and AgriPro are registered trademarks of ADVANTA USA, Inc.

GENERATORS



12-KW Isuzu Diesel Generator Set

- Diesel • LP Gas •
- Natural Gas • PTO •

Automatic & Manual Start Systems

Used Units Also Available

MARTIN ELECTRIC PLANTS

280 Pleasant Valley Rd., Ephrata, PA 17522-8620
800-713-7968
Tel: 717-733-7968 Fax: 717-733-1961

WHAT'S AHEAD FOR CORN, OATS, SOYBEAN AND WHEAT FUTURES AND OPTIONS

Lehigh Valley Futures, Inc. through its clearing FCM, offers access to all major exchanges' Futures and Options.

Serving the Farm Community for more than 30 years.

When buying options, your risk is in some cases limited to the premiums paid plus transaction costs...

FOR INFORMATION, CONTRACT DETAILS AND FUTURES AND OPTIONS STRATEGIES...
PHONE (610)366-7979 or 800-543-8939

LEHIGH VALLEY FUTURES INC.

Commerce Plaza, Suite 249,
5000 Tilghman Street,
Allentown, PA. 18104
e-Mail: info@lvfutures.com
web site: www.lvfutures.com

The risk of loss in trading futures and options can be substantial. Futures and options trading may not be suitable for everyone. You should carefully consider the risks in light of your financial condition in deciding whether to trade.