

1993 International, 7.3 Diesel, 5 Speed Trans PS, AC, Full Disc Brakes, 79,000 Miles, New Rubber Paint, All The Bells, Looks New, Runs New 25'500 GVW



1982 International 2275, 6 cyl Diesel, 10 Speed, PS, 25' Flat Bed 53,000 GVW, 205,000 Miles



1985 International Cargo Star, 192,000 Miles 22,500 GVW, 7.3L Diesel, Auto, Cab & Chassis



1993 International 4900, 24' Van w/Lift Gate, DT 466 Diesel, 210 HP, 5 Speed, Hyd Brakes, Under CDL, 284,000 Miles



1994 International, Cab & Chassis, DT 466, 210 HP Eng, 6 speed Trans, AC, PS, Full Air Brakes, Looks new & Runs New! 33,000 GVW



New Open Car Trailer \$1,499
7,000 lbs. GVW, elect. brakes, with ramps that slide out from under diamond plate steel runways
4x8 Utility Trailer \$399 • Car Dolly \$699
302/368-9534
Newark, Delaware



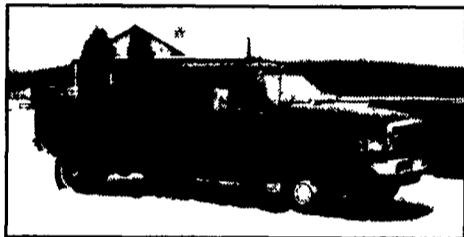
*1998 FLD132 Fresh Cat 475 2 yr. National Warranty, 415,000 Miles, 10 Spd, 70" Condo - V. Clean - No Caps **\$38,500**
*1997 Wabash 53' Reefer, Air Ride SB3+Unit, 4200 Hrs - Clean **\$21,900**

*Denotes Special Financing As Low As 3.9% Subject to Credit Approval

K.T. Graham, Inc.

4407 Oregon Pike, Ephrata, PA 17522
(717) 859-3168 • Fax (717) 859-3392
Web: www.ktgraham.com
Email: ktgraham@desupernet.net

USED TRUCKS FOR SALE



1998 DODGE RAM 3500 SLT
Quad Cab Dually, 4x4, Cummins Diesel, AT, A/C, Most Options, Met. Green, 60K
\$22,900

- 1999 VW GOLF 4 Door Diesel, 5 Spd, 94K Miles, Black **\$10,500**
- 1998 DODGE RAM 3500 Quad Cab SLT, Cummins Turbo Diesel, 4x4, AT, A/C, Most Options, Leather, 60K Miles, Met. Green **\$22,900**
- 1997 DODGE RAM 2500 Club Cab, 4x4, SLT Laramie, Cummins Diesel, 5 Spd, A/C, Most Options, 147K Miles, Long Bed, Black **\$18,900**
- 1997 GMC 1500 SUBURBAN 4X4, V8, AT, Most Options, Barn Doors, Leather, 95K Miles, Black **\$15,300**
- 1997 FORD F150 REG. CAB 4x4 XLT LARIAT, 351 V8, AT, A/C, Most Options, 51K Miles, Black **\$15,900**
- 1996 DODGE RAM 2500 SLT LARAMIE, 4x4, Cummins Turbo Diesel, AT, A/C, Most Options, 208K Miles, Blue & Grey **\$11,600**
- 1995 FORD F250 XLT, 4X4, V8, AT, A/C, Most Options, Alloy Wheels, 80K Miles, Green & Silver **\$10,900**
- 1995 CHEV S-10 EXT. CAB, 4x4, AT, A/C, 4.3, 130K Miles, Red **\$7,200**
- 1994 FORD F250 XLT 4x4, Powerstroke Turbo Diesel, 5 Spd, A/C, Most Options, 130K Miles, Black **\$12,500**

SCHAEFFERTOWN AUTO & TRUCK SALES
Rt. 501, 1-1/2 miles South of Schaefferstown
717-949-2812



90 GMC, 25,500 GVW, 5 Speed Rear, 13,000 Miles On New 3116 Cat Engine, 22' Morgan Body, Rollup Rear Door, Excellent Condition (717) 367-5404

LEED TRUCK CENTER
402 South Chiques Rd. **717-898-1200**
Salunga Exit, Route 283



1993 Ford E250 Cargo Van, 6 Cyl, A/T, P/S, P/B, 7,200 GVW, Insp, Fleet Maint, Clean **Reduced To \$2,900**
1991 IHC 4900, DT466 Turbo Diesel, 6+1 Spd, P/S, A/B, 32,800 GVW, 21' Platform Body, New Insp, Clean **Only \$7,900**



1989 FORD E-350, Custom 351 V8, Gas, A/T, P/S, P/B, 9' Baker Utility Body, Gas Power Gen Set & Baker Versalit Bucket, Dual Wheel, 11,000 GVW, New Paint, Very Clean **Only \$8,900**
1985 Ford F-900, 8.2 Liter Diesel, 10 Spd, P/S, A/B, Tandem Axle Hend Susp, 50,000 GVW, 26' Danco Rollback, Only 217,500 Miles **Priced To Sell!**

35 TRUCKS AND TRAILERS

PA Int'l, 19' hyd. tilt trailer, 10,000 GVW, 102" wide, \$13,000 Power-Shack. 610-857-9920.

'95 GMC 3500 Rally STX, 8 pass. 454 auto, PS, PB, PW, PDL, cruise, tilt, dual air, 410 ratio, limited slip diff., towing package, 78,000 miles, dark blue, excellent condition, \$8,975. 717-733-2873

Bucket truck, Asplundh LR-45, mounted on 77 int., fair cond., \$4500. 215/723-3919

'00 Ford F350 XLT crew cab dually 4x4, 7.3 power stroke dsl, 77,000 mi. hwy., tow package, AC, lots of extra, \$27,900. 610/346-6247

'95 Dodge 2500 RAM, 4x4, pickup, Cummins dsl, ext cab, 1 owner, 44k, fully equip, \$15,500. Lehigh Co. 610-262-4501 eves

1978 GMC 1/2 ton pickup truck, 6cyl, 4spd, 6' box, 2wd, good running cond., tarp, good tires, 6 Mag. wheels, \$1,800 OBO. 717-279-6860.

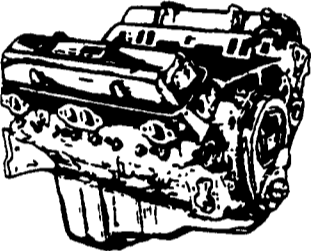
1972 FORD 9000 tandem axle w/14' dry lime spreader, \$9,000. 1982 MACK, tandem axle, 17' dry lime box, \$19,000. 410-848-0106.

Ford LN 700 dump truck, 361, 5+2, \$2,500. 814-736-9080

JONES

GM Parts

THE FEELING IS GENUINE



GM GOODWRENCH 350 V8 1973-85
Part Number 10067353
New Engine - Not Rebuilt
36 Month or 50,000 Mile Warranty

New Engine - No Core Fee **\$1,299⁰⁰**

WE'LL MATCH ANY COMPETITOR'S PRICE!

Goodwrench Transmissions Now In Stock! Call For Great Prices

Call 394-0711 for prices on other New or Remanufactured Goodwrench Engines. 2.5 Liter thru 454 cid. Gas and Diesel

Chevrolet - Pontiac - Olds - Buick - Cadillac - GMC

JONES GM PARTS CENTER

1335 Manheim Pike, Lancaster, PA 17604
Easily Located on Rt. 72 Just off of Rts. 283 & 30
Hours: Mon-Fri 7:30 a.m. - 8 p.m. Sat 7:30-3
(717) 394-0711

MORE THAN JUST POWER.



ARMY 6x6 TRUCKS

2 1/2 Ton ★ 5 Ton ★ 10 Ton



M998 Hummers Available
Harvest ★ Spreaders
Feeders ★ Fuel/Water
100% Financing
Lease Plans
(Qualified Buyers)

Dependable and Field Proven

Complete Military Truck Parts Inventory

MEMPHIS EQUIPMENT

766 S. Third St.
Memphis, TN 38106
901-774-0600
Fax 901-946-1919

e-mail: memphisequipment@compuserve.com

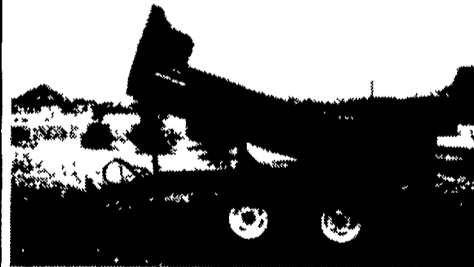
821 Lincoln Way West
Chambersburg, PA 17201
717-263-4194
Fax 717-263-4555

www.memphisequipment.com

THE NATION'S LARGEST ARMY TRUCK DEALER

FARM DUMP TRAILERS

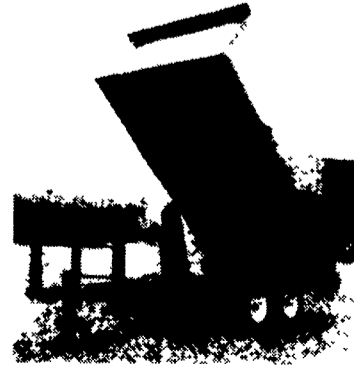
(Direct from the Manufacturer)



6-Ton Dump Trailer
• 10 ft x 7 ft
• Floating Tandem Axle
• 3 ft. Front, 3 ft Tailgate & Grain Chute
• 16 in Extendable Sides
• 10 ga Floor & Sides
• 11Lx15 Flotation Tires
• 2-Way 4 in x 24 in Hydraulic Cylinder includes hoses
\$3,200 U.S./delivered

7-Ton Road Dump Trailer

• Fifth wheel or bumper type
• 16 ft. x 8 ft. deck 3 ft. front rack and pockets side & back
• D.C. hydraulic pump & battery mounted in locking tool box.
• 12 ton drop leg jack
• 10 ga. floor
• 6x3x3/16 tube main frame
• Sealed beam lighting
• 7000 lbs. per axle rating
• Electric brakes on both axle
• 16" tires on white spoked rims
• \$6400 U.S. delivered in Northeast U.S.A.



BERKELMAN'S WELDING

RR 7, AYLMEER, ONTARIO, CANADA N5H 2R6
(519) 765-4230