

SINCE 1936

M.M. WEAVER & SONS, INC.



MASSEY FERGUSON
Tractors And Combines

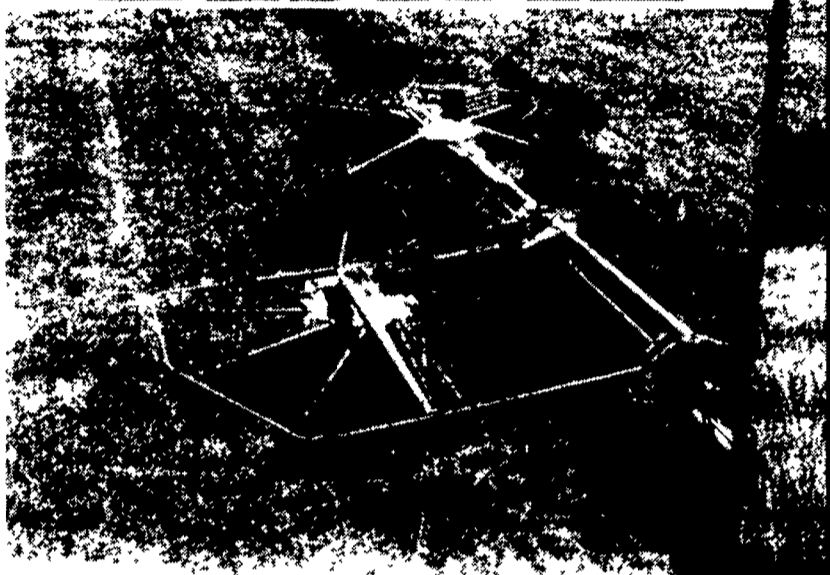
Leola, PA 17540 Phone: (717) 656-2321

Located: 4 miles West of New Holland on Rt. 23, 1-1/2 miles Northeast of Leola on the No. Groffdale Rd., 1 mile on the right, opposite Groffdale Mennonite Church.



Meeting all your harvesting needs!

CLAAS



Your choice of one or two perfect windrows —
CLAAS® LINER® 1550T

- Clears up to 24'
- Can form 1 or 2 windrows
- Tandem axle running gear follows ground contour
- Double tines capture all cut crop
- Hydraulic wings lift for travel and storage
- Enclosed, permanently lubricated control housing
- Low maintenance and long life



Internet: www.claasofamerica.com
Email: claas@claasofamerica.com

Financing available through **CLAAS Financial Services**



You are invited to our
OPEN HOUSE

Thursday, January 24, 2002
Special One Day Only!

Slides & Videos	By: M.M. Weaver's	9:30 - Lunch
Lunch will be served	By: M.M. Weaver's	11:00-1:00
Claas Hay Equipment	By Frankie Wilbert	12:15-12:30
Claas Forage Harvesters	By: Bob Armstrong	12:30-1:00
Life on Mason Dixon Farm	By: Dick Waybright	1:00-1:30
MF Farm Equipment	By: Dick Bilby	1:30-1:45
Fendt Tractors	By: Kevin Beam	1:45 - ?

USED COMBINES

85 MF 860 4x4 2466 Hrs, Ser #19374	\$12,500
85 MF 860 4x4 Ser #19749, 5,000 Hrs	\$11,500
81 MF 860 Ser #15125, 4,300 Hrs	\$8,000
79 MF 760 Ser #9899, 3,260 Hrs	\$4,000
75 MF 750 Ser #5130	\$3,000
91 MF 8460 Ser #09402425, 2758 Hr	\$45,000
90 MF 8460 Hill Side Ser #9402540, 3774 Hr	\$45,000
90 MF 8460 Hill Side Ser #9402539, 2428 Hr	\$45,000
89 MF 8460 Hill Side Ser #9401998, 4026 Hr	\$35,000
81 MF 850 Ser # 23640, 3188 Hr	\$11,800
82 MF 850 Ser #23681, 4600 Hr	\$7,000
80 MF 750 Ser #19182, 2054 Hr.	\$6,500
79 MF 550 Ser #1739	\$11,000
80 MF 550	\$4,000

USED HARVESTERS

New Holland 900 Harvester, 2 Row - Hay	\$16,500
790 New Holland Harvester 2 Row Corn With Corn Cracker	\$11,900
00 Gehl 1275 Pull Type Harvester, Crop Processor, Metal Detector, 3 Row Corn Hay Head	\$20,000

Gehl 1060 Pull Type Harvester, No Heads	\$4,500
Fox 6350, 4x4 SP Harvester, 2260 Hrs., 3 Row Corn, Hay Head	\$8,500
00 Claas 880 Harvester, 4x4, SN#49103553, Auto Lube, Corn Cracker, OD Trans, Hyd for Dump Wagon, 12' Hay Head, 6-Row Independent Corn Head	\$229,000
99 JD 6750 Harvester, 4x4, 365 HP, Corn Cracker, 30 5R32 Tires, Hyd for Dump wagon, Auto Lube, 1022 Cutter Hours, 1310 Engine Hours, 10' Hay Head, 6-Row Independent Corn Head	\$160,000
Fox Max II SP Harvester, 2WD, 3-Row Corn Head, 7' Hay Head	\$7,500
95 Claas 840 Harvester, 4x4, 381 HP, 24 5R32 Tires, Corn Cracker, 1352 Cutter Hours, 2413 Engine Hours, Claas 10' Hay Head	\$144,000
96 Claas 860 Harvester, 4x4, Auto Lube, 435 HP, 30 5R32 Tires, Corn Cracker, Hyd for Dump Wagon, 1321 Cutter Hours, 1856 Engine Hours, Claas 12' Hay Head, 6-Row Independent Corn Head	\$165,000
97 Claas 880 Harvester, 2WD, 503 HP, Auto Lube, 24 5R32 Tires, 1358 Engine Hours, 1024 Cutter Hours, Claas 10' Hay Head	\$139,000
JD 6710 Harvester 4x4 Corn Cracker, 6 Row - 10 Hay, 1600 Cutter HR	\$94,000

USED TRACTORS

Ford 4000 gas	\$4,600
Belarus 820M, 4x4 with Loader	\$9,600
JD 8400 4x4 Tractor, 225 HP, 18 4R46 with Duals, 4 Remote Hyd Outlet, Front Weights and Rear Wheel Weights, 1550 Hr	\$85,000
MF 1155 2WD, Cab, 140 HP	\$8,000
Farmall H NF, New Tires, Tire Chams, front blade	\$2,200
MF 4255 4x4 with Loader, 85 HP, 175 Hrs	\$33,800
MF 8160 4x4 Cab 180 HP	\$77,000
MF 3650 4x4, 130 HP	\$32,000

RENTAL AND DEMO MODEL TRACTORS

MF 8160 4x4, 180 HP, Duals	\$72,000
MF 390T - 2WD, 18 Speed Trans, 80 HP	\$27,000

MANURE & FEEDING EQUIPMENT

Lucknow 285 TMR Mixer Wagon	\$4,900
-----------------------------	---------

HAY EQUIPMENT

99 Claas 4x5 Round Baler Wide Pickup, Net-Twine	Just In
New Idea 4845 Round Baler 5x4 Twine	\$5,000

Claas 2200 Large Sq Baler, 27"x48" DEMO	\$57,000
Claas 1200 Sq Baler, 27"x48"	\$29,500
New Holland 853 Round Baler, New Chams	\$6,800
Gehl 2240 Center Pivot 12' Haybine	\$3,200
E-Z Trail Bale Basket	NEW
Gehl Disc Mower Conditioner, 10'	\$2,500
Gehl 2160 Haybine, 10'	\$1,200
98 New Holland 590 Sq Baler, 35"x32"	\$38,000

MISC. EQUIPMENT

1360 Case IH Grnder Mixer w/EL Scales, like new, used 6 mo	\$13,900
JD 1008 Rotary Cutter 10' Cut	\$2,500
Brady 12 Ft Flail Shredder	\$2,800



JD 6850 4x4 Harvester
~~\$190,000~~
\$177,500

440 HP, Auto Lube, 30.5R32 Corn Cracker 618 Cutter HR, 776 Engine HR, 14' Hay Head, 8 Row Independent Corn Head



MF 8280, 4x4, 225 HP, 1140 HR
CALL



JD 8400 4x4, 225 HP, 18.4R46 With Duals, 4 Remotes **\$85,000**