

JD 2955 MFWD, HiLo, dual remotes, 4 post, w/turbo, high hours, \$12,500. 814-766-0074 No Sun. calls

50KW air cooled generator, single & 3 phase. 717-532-7261

12' JD cutt mulcher, mod 950, used very little. 23' Brillion x-fold cutt packer, good cond. 717-935-2011.

6R 7000 corn planter w/ HD frame mount no-till coulters, liquid or dry fert, completely rebuilt, exc cond, \$8,900. Pequea Planter, 717-442-4406.

WD45 AC, restored, ready to show, \$2,675. LanCo, 717-336-1282.

SS tailgate auger, 10x8" dia, hydraulic motor driven, \$1000. High speed 36 ft SS conveyor on tires, approx 1 ton per min, \$5500. 570-297-3864

Snow blower, 8ft Lundell, 3pth, 1000 RPM PTO, 20 yrs old, 5 hrs original, shed kept, \$2000. Will del locally. 215-491-0455

INT Super A, cultivators & plow, needs paint, \$2,500. MM G-6, runs good & straight \$3,500. JD 40 standard, runs good, straight, \$3,700. 410-820-7513.

There is an Alternative Building for you. Steel arch & fabric style buildings. Equipment storage, free stall barns, calf barns, riding arenas, etc. See our display ad under Building & Supplies. John E Weaver, 570/672-2213.

JD 7000 conservation 6R 30" corn planter, dry fert, new cross auger insecticide monitor, ex cond, field ready. (2) JD hyd reset plows, semi-mount & 6b 16" hillside hitches. Del poss. 814-472-4198

JD 7000 no-till 6R 30" dry fert, corn & soybean planter, good shape. NH 479 haybine rollers, no rubber, make offer. 570-467-2746

7x16' Flatbed farm wgn, \$1,500. Unerferth Perfecta II S-Tine field cultivator, \$950. Gleaner model K Combine w/grain head & model E 330 Corn head, \$3,000. Small Gravity wgn, \$400. 717-721-9274.

Farmall Cub w/5' belly mower & snow plow, \$2,675. LanCo, 717-336-1282.

IH M, good cond, good tires, w/plow, disc, & sickle mower, \$1200. 717-432-1726 Located Newark DE

BINKLEY & HURST BROS. INC. HAS A GOOD SELECTION OF QUALITY PRE-OWNED!

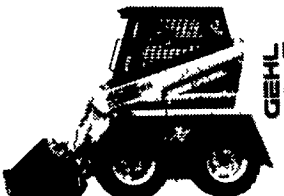
FINANCE NOW - LOWEST A GREAT TIME TO PURCHASE!

Case 1840 Uniloader



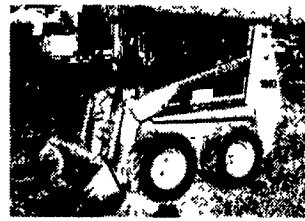
Approx 1800 Hours with Aux Hyd Outlets, Self-Leveling Loader, 50 HP Case Cummins Diesel (UT 4577)
\$12,500
No Trade Special \$10,900

Sold New! 1998 Model Gehl SL4625 SX Diesel Kubota Power



47 HP Diesel, 1,350 lb SAE Operating Capacity, Only 728 Hours, Self-Leveling Loader, 65" Wide Utility Bucket with Universal Hookup (UT 4793)
\$12,900

Case 1840 Uniloader, Only 858 Hours



63" Dirt Bucket, Aux Hyd, Self Leveling Loader, Deluxe Seat, Counterweights, Engine Block Heater, Back-Up Alarm (UT 4777)
\$14,000

1990 Case 1840 Uniloader



63" Utility Bucket (UT 4752)
Priced To Go!

New Holland LX485 Diesel



1995 with 1415 Hours, Air Boss Tires, No Flats, 72" Bucket with Teeth (UT 4772)
Discounted to Sell!

Just Traded Skid Loaders Priced to Go! Gehl 4500

40 HP Ford Water Cooled Gas, 10'00x16 5 Tires, 65" Bucket, Aux Hyd. (UT 4819)
\$4,500

Very Late Model New Holland 311 Baler



Setup For Horse Drawn Application, with Engine
Ask For Landis
You Won't Get 'em Much Nicer!

Nice New Holland #8 Crop Carrier - Save \$500



Tandem Axle Wagon (UM 4810)
Call For Blow Out Pricing

THIS GROUP OF TRACTORS SELECT BY CASE IH (Pre-Owned)

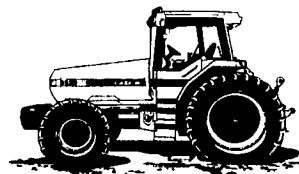
Ask about 12 Month or 1000 Hour Warranty Coverage. Ask about Low Rate Financing.

1998 Case IH 8910 MFD Magnum, Only 942 Hours, Rated 135 HP



20 8x42 Radial Rear Tires, 16 9x30 Front Tires, Triple Hyd Outlets, 540-1000 Dual Shaft PTO, 12 Front Weights, 3 Pt with Quick Coupler Hitch, Loaded (UT 4791)

1998 Case IH 8920 MFD Magnum, Rated 155 HP with Dual Wheels



1,567 Hours, 18 4x42 Radials with Axle Duals with (2) 1,000 lb. Rear Wheel Weights, 540-1000 PTO, Triple Hyd Outlets, 3 Pt with Quick Coupler, Weight Frame with 22 Front Weights, Extended Outside Road Mirrors, Loaded (UT 4792)

1997 Case IH 8930 MFD Magnum, Rated 180 HP



Only 1,700 Hours, with 20 8x42 Radial Tires with Matched Axle Mount 20 8x42 Dual Wheels, 16 9x30 Front Tires (New), 4 Hyd Outlets, Dual Shaft 540 and 1000 PTO, 22 Front Weights, 3 Pt Hitch with Quick Coupler, Extended Outside Road Mirrors (UT 4768)

Recent Trade! Case IH Magnum 7140 MFD with Duals



Dyno Tested 232 HP 18 4x42 Radials with Duals, 3 Remotes, 18 Front Weights (UT 4800)
Ask For Low Rate Financing
Can Easily Be Changed To 540-1000 PTO For Economical HP For a Small Fee!
Ask for Leonard!

Approx. 100 HP Case IH Maxxum 5140 MFD, Cab & Air, Power Shift



Good Rubber, 3 Remote Outlets, New 18 4x38 Firestone Rears (UT 4730)
\$32,800 Price Reduced!
For No Trade Special \$29,800

Case IH MX220 Magnum



We Sold New (UT 4798),
Rated 185 HP

John Deere 4560 MFD



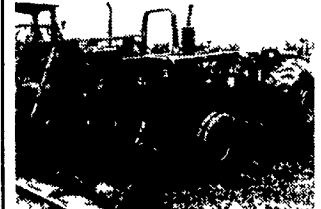
With Duals, New Firestone Radials (UT 4817)

Almost New Case IH MX150 MFD, Rated 130 HP



With Deluxe Cab, 3 Hyd Outlets, 1257 Hrs, 8 Weights, Outside Mirrors, Thumb Switch Power Shift
\$53,800

Massey Ferguson 285 Diesel Loader Tractor



Rated 81 HP, Good Multi-Power, 540-1000 PTO (UT 4818)
\$11,800

Case 1845C



1754 Hours, Good Rubber, 12.00x16.5, 73" Bucket (UT 4598)
\$13,000

Gehl 6635 DXT with 2-Speed Power Shift and Aux. High Flow Hydraulics



Large 14'00x17.5 High Traction Tires, Only 932 Hours (UT 4803)

Case 1840 Diesel



1993 Model, 10'00x16.5 Tires, 75% Good (UT 4744)
\$10,000 OBO

Gehl SL5625, 52 HP Diesel Skid Loader



With 72" Utility Type Bucket and Aux. Hyd. with 12'00x16.5 Tires, We Sold New, Approx. 1900 Original Hours (UT 4554) ~~\$15,500~~
\$14,900

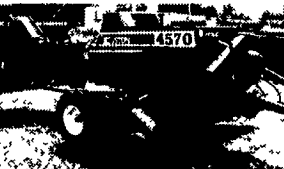
Used 60" Manure Fork to Fit Gehl 4625 Skid Loader - Like New \$500 \$395

Gehl Scavenger 1315 Late Model Spreader



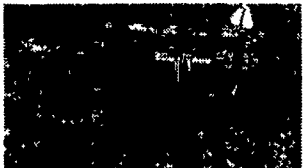
1818 Gallon or 243 cu. ft.
Only \$7,000
Tow Away Discount
\$\$ Call for Blow Out Pricing! \$\$

Hesston Model 4570 In-Line Square Baler With Thrower - Save \$1,000



Same as Case IH Model 8530, Very Good Cond. (UM 4789)
\$9,950
Clearance \$8,950

John Deere 12 Foot Cut Disk Harrow



with Good Blades, with Dual Transport Wheels (UM 4713)
\$2,500

Gehl 970 Forage Box Price Reduced!

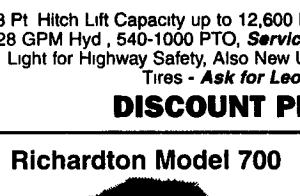


On Tandem Axle Wagon (UM 4818)
Call For Blow-Out Pricing

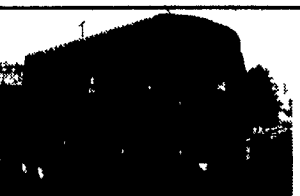
YOU WON'T FIND 'EM MUCH CLEANER!



Power Shift & Shuttle Reverser Make Work Easier! Enjoy a Quality Tractor from Binkley & Hurst Bros. Today!
Late Model 1998 Case IH Maxxum MX 170, Rated 145 HP MFD and Cab A H, with Road Gears for Speeds of up to 25 MPH or More, 18 4x42 Firestone Radial 23" Rear Tires with Matched Dual Wheels with Approx 80% Tread, Approx 2,275 Hours (UT 4788)



Ask About 5.4% Financing
3 Pt Hitch Lift Capacity up to 12,600 Lbs, Power Shift and Shuttle Reverser 28 GPM Hyd, 540-1000 PTO, **Serviced, Ready to Work!** Revolving Beacon Light for Highway Safety, Also New Ultra Torque PT712 380/85R30 Front Tires - **Ask for Leonard! \$66,800 Value**
DISCOUNT PRICE \$58,900



Self Propelled Diesel Case IH 15 Foot Cut Disc Mower Conditioner



8850 HP Windrower
Only 1360 Hours, Case Cummins Powered, Header Cut 15'3" with Gauge Wheels, Priced to Sell! (UT 4797)
Ask About 4 Month Waiver or 5.4% Financing. Don't Miss This One!

Meyer 4618 18 Foot Long Forage Box

On 18 Ton Gear, with Poly Floor, Variable Speed (UM 4887)

BINKLEY & HURST BROS. INC.

(717) 626-4705

133 Rothsville Station Rd.
P.O. Box 0395, Lititz, PA 17543-0395
Located 1/2 Mile North of Rothsville

1-800-414-4705
Fax 717-626-0996