

Virginia Livestock Auction Summary

Richmond, Va.
January 7, 2002
Report Supplied By USDA
NORTHERN VIRGINIA LIVESTOCK — Front Royal, Marshall, Rockingham, Shenandoah and Staunton Union for the week of Dec. 31 thru Jan. 5, 2002. All prices per hundred pounds liveweight (cwt), except where noted.

FEEDER CATTLE: 692 head.
FEEDER STEERS: Med. and Lge. 1: 200-300 lb 88-105.00; 300-400 lb 88-104.00; 400-500 lb 88-102.00 500-600 lb 83.50-102.00; 600-700 lb 75-99.50, 700-800 lb 79-88.00; 900-1000 lb 68-77 75
HOLSTEIN STEERS: 200-300 lb 72 00, 300-500 lb 66.00, 500-700 lb 65.00.
HEIFERS: Med. and Lge. 1.200-300 lb 75-80 00; 300-400 lb 74-83 00; 400-500 lb 75-83.00; 500-600 lb 75-86 00; 600-700 lb 70-80 00 few 62-69.00; 700-800 lb 60-74 00; 800-900 lb 61.00
FEEDER BULLS: Med and Lge 1: 300-400 lb 88-104.00 few 80-88.00; 400-500 lb 88-102.00 few 80.00; 500-600 lb 78-95 00; 600-700 lb 70-87.00; 700-900 lb 67-73.00.
SLAUGHTER CATTLE 367 head
SLAUGHTER COWS: 343 head. Breaking Utility and Commercial 2-3, 33-41-00, Cutter and Boning Utility 1-3, 30-42 50, Canner and Low Cutter 1-2, 24 50-38 00
SLAUGHTER BULLS. 24 head Yield Grade 1, 900-1300 lb 44 75-54.00, 1300-1600 lb 46-55.50, 1600 lb and up 47-57.00
COWS RETURNED TO FARM. 10 head Prices per head. Med. and Lge 1: 5-6 yrs old check safe with calf 740-760 00 per head.
COWS WITH CALVES AT SIDE: 10 pairs Medium and Large 1, 5-8 yrs. old

with calves 150-200 lb 750-850.00 per pair.
BABY CALVES RETURNED TO FARMS: 76 head. Newborn to 4 wks: 11-117.50 per head; over 100 lb 27-110.00 per cwt.

Lynchburg Weekly State Graded Feeder Cattle

Richmond, Va.
January 8, 2002
Report Supplied By USDA
STATE GRADED FEEDER CATTLE for Mon., Jan 7: 212 head; 106 steers; 106 heifers. Prices follow with average weights and average prices in parentheses where applicable.
STEERS: Med. and Lge 1 15 head, 400-500 lb (466 lb) 96-100.00 (99.50), 27 head 500-600 lb (551 lb) 95-98 25 (97.29), 15 head 600-700 lb (649 lb) 83.50-87 50 (86 72), 5 head 700-800 lb (758 lb) 80 00 Med. and Lge. 2: 11 head 400-500 lb (460 lb) 94-98.00 (97 25); 13 head 500-600 lb (560 lb) 97.00; 9 head 600-700 lb (643 lb) 83-84.25 (83.98).
HEIFERS. Med and Lge 1: 8 head 400-500 lb (431 lb) 83.75; 19 head, 500-600 lb (542 lb) 76.50-78.25 (77.79), 10 head 600-700 lb (626 lb) 75-75.50 (75 40) Med. and Lge. 2: 13 head 300-400 lb (357 lb) 90-99.00 (97.55); 13 head 400-500 lb (469 lb) 80-83.75 (82.84); 17 head 500-600 lb (544 lb) 76.75-78.75 (78 27), 10 head 600-700 lb (626 lb 74-75 50 (75 20) Small 1. 5 head 300-400 lb 374 lb 85 00, 10 head 400-500 lb (462 lb) 75-79 00 (78 63), 7 head 600-700 lb (640 lb) 75.
REGULAR WEEKLY AUCTION, Jan. 7: **FEEDER CATTLE:** 141 head Feeder bulls 2.00-3.00 higher. Prices based on in weights.
HOLSTEIN STEERS. 5 head. Med and Lge. 2. 200-300 lb 65.00; 300-500 lb 671-72.00

BULLS: 53 head. Med. and Lge. 1: 300-400 lb 99-105.00; 400-500 lb 97-99.00; 500-600 lb 91-97.00. Small 1: 200-300 lb 92.50-100.00; 300-400 lb 78-82.00; 400-500 lb 80-91.00. Med. and Lge 2: 200-300 lb 105.00; 300-400 lb 99.00; 400-500 lb 95-98.00; 500-600 lb 84-98.50; 600-700 lb 73-82.00.

Wytheville Weekly Feeder Cattle

Richmond, Va.
January 9, 2002
Report Supplied By USDA
Wytheville Weekly State Graded Feeder Cattle, Jan 8 — 145 head.
GRADED STEERS. 60 head Med and Lge. 1: 200-300 lb 90-96 00, 300-400 lb 93-96 00; 400-500 lb 80-90.50, 500-600 lb 80-83.00, 60-700 lb 83.00, 800-900 lb 65-73 00 Med and Lge 2: 200-300 lb 80-85.00, 400-500 lb 89 00, 500-600 lb 83-89 50, 600-700 lb 75-81.00, 700-800 lb 69-73 00
GRADED HEIFERS. 85 head Med and Lge 1. 200-300 lb 81-101 00, 30-400 lb 86 50; 400-500 lb 82-86.00, 500-600 lb 75-78.00, 600-700 lb 68-70 00, 700-800 lb 68-72 00 Med. and Lge. 2. 300-400 lb 82-86.00; 400-500 lb 75-79 00, 500-600 lb 70-79.00, 600-700 lb 72.000, 700-800 lb 66.00.
Wytheville Regular Weekly Auction Feeder Cattle 62 head Prices per cwt. based on in weights
HOLSTEIN STEERS 17 head Med and Lge 2 200-300 lb 95 00, 700-900 lb 50-57.50, 900-1100 lb 45 00
BULLS 45 head. Med and Lge 1 200-300 lb 89-100 00; 300-400 lb 86-88 00, 400-500 lb 74-79.00; 500-600 lb 69-74 00, 600-700 lb 62-70.00, 700-900 lb 60 00.

Winchester Weekly Feeder Cattle

Richmond, Va.
January 8, 2002
Report Supplied by USDA
WEEKLY AUCTION for Jan 7
FEEDER CATTLE: 136 head. Prices based on in weights.
STEERS. 53 head Med and Lge 1 300-400 lb 93.50; 400-500 lb 90-94.50, 500-600 lb 88 25, 600-700 lb 85.00, 700-800 lb 77-78 00; 900-1000 lb 79 75
HEIFERS 59 head Med and Lge 1 300-400 lb 83.50-88 25, 500-600 lb 73-75 25, 600-700 lb 74 75, 700-800 lb 70 00 Med and Lge 2 200-300 lb 85 00, 300-400 lb 80 50-84 25, 500-600 lb 170-72 00, 600-700 lb 67 50-72 50
BULLS 25 head Med and Lge 1 400-500 lb 90 00, 500-600 lb 77-83 50, 700-800 lb 67-68 00. Med and Lge 2 300-400 lb 74 75, 500-600 lb 67-75 00, 600-700 lb 60-68 00

Tri-State Weekly Feeder Cattle Sale

Richmond, Va.
Jan. 7, 2002
Report Supplied By USDA
WEEKLY AUCTION for Jan 4
Prices per hundredweight based on out weights
FEEDER CATTLE 760 head
STEERS 300 head Med and Lge 1 200-300 lb 100-103 50, 300-400 lb 103 50-110 00, 400-500 lb 94 50-103 00 500-600 lb 88-97 00, 600-700 lb 78-87 00, 700-800 lb 76-84 50, 800-900 lb 70-76 50, 900-1000 lb 62 50-65 00, 1000-1100 lb 62 50
HOLSTEIN STEERS Med and Lge 2 300-500 lb 63-65.00, 500-700 lb 61-65 00, 900-1100 lb 47 00
HEIFERS 275 head Med and Lge 1 200-300 lb 80-92 00, 300-400 lb 88-97 00, 400-500 lb 88-96 00 500-600 lb 78 50-87 00, 600-700 lb 78-82.00, 700-800 lb 75-82 00, 800-900 lb 60-69 50
BULLS 175 head Med and Lge 1

200-300 lb 100-108.00; 300-400 lb 95-100.50; 400-500 lb 88-97.00; 500-600 lb 80-98.00; 600-700 lb 78-83.50; 700-900 lb 64-77.00

Staunton Weekly Feeder Cattle Sale

Richmond, Va.
Jan. 7, 2002
Report Supplied By USDA
WEEKLY AUCTION for Jan 4
FEEDER CATTLE. 540 head. Feeder steers 300-700 lbs 3 00-5 00 higher. Feeder heifers 300-600 lbs 5 00-8 00 higher Prices per cwt based on in weights
STEERS 290 head Med and Lge 1 200-300 lb 88-100 00, 300-400 lb 88-104 00, 400-500 lb 88-102 00, 500-600 lb 88-102 00, 600-700 lb 85-99 50, 700-800 lb 79-88 50, 900-1000 lb 61-77 75
HEIFERS 200 head Med and Lge 1 200-300 lb 75-80 00, 300-400 lb 75-80 00, 400-500 lb 75-83 00, 500-600 lb 75-86 00, 600-700 lb 70-80 00, 700-800 lb 67-74 00
BULLS 40 head Med and Lge 1 300-400 lb 88-104 00, 400-500 lb 88-102 00, 500-600 lb 85-95 00, 600-700 lb 77-87 00, 700-900 lb 67-73 00

Roanoke-Hollins Weekly Feeder Cattle Sale

Hollins, Va
January 8, 2002
Report Supplied By USDA
Weekly Auction for Jan 7 —
FEEDER CATTLE 227 head Prices based on in weights
STEERS 54 head Med and Lge 1 300-400 lb 105-106 00, 400-500 lb 97-102 50, 500-600 lb 88-95 00, 600-700 lb 85 50-89 50, 700-900 lb 79 00 Med and Lge 2 400-500 lb 86-94 00
HOLSTEIN STEER Med and Lge 2 300-500 lb 70 00, 700-900 lb 58 00
HEIFERS 82 head Med and Lge 1 300-400 lb 300-400 lb 85-90 50, 400-500 lb 79 25-86 00; 500-600 lb 78-84 50, 600-700 lb 71 75-76 50
BULLS 25 head Med and Lge 1 300-400 lb 93-100 50, 400-500 lb 91-96 50, 400-500 lb 79 00



Building?



Want accelerated tax deductions?



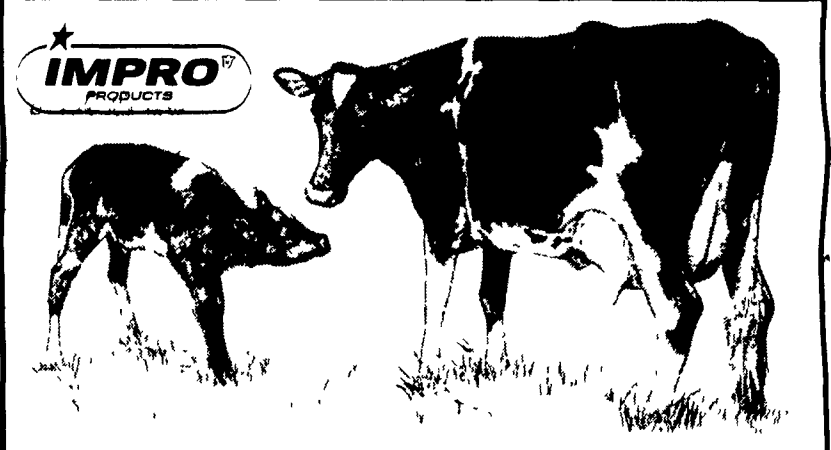
Want flexibility and fixed payments?



Want personalized on-site service?

Call Telmark for the **best building lease** to fit your needs...guaranteed.

Mike Dixon Central PA, West MD 814-684-5707	Ken Darlington PA, NJ, MD, VA WV 610-793-0150	Sue Beshore PA, NJ, MD, VA, WV 717-932-1715	Andrew McLean Delmarva 410-827-5052	Liz Anderson Delmarva 410-651-4128
Mike Fullam Central PA 570-966-9202	Brenda Pflieger Central PA 570-568-8440	Joe Polite Northwest PA 724-981-1324	Lisa Sonnen Northeast PA North NJ 717-866-9217	Doug Snee Southwest PA, WV 724-627-5941



Give Your Calves a Helping Hand...

Use IMPRO, the all natural product designed to boost your cows immune system! No milk with-holding required

Dairy Farmers!

You are invited to attend one of the following IMPRO meetings.

Tuesday Jan 22, 2002 9:30 AM
Yoders Restarant
14 S. Tower Rd. New Holland, PA

Wednesday Jan 23, 2002 9:30 AM
Carriage Corner Restaurant
Rt. 45
Mifflinburg, PA

Thursday Jan 24, 2002 9:30 AM
Bart Township Fire Hall
Georgetown, Pa. Rte. 896 & Furnace Rd.

Speaker:

Dr. Richard Holliday DVM
Impro Products Inc.

Lunch will be served at 12:00 Noon.

Reservations required!
Call Before Jan. 18, 2002

AARON GROFF & SON
103 Clearview Drive
Ephrata, PA. 17522
(800) 468-4909

Ray K. Espenshade
Lewisburg, PA
(570) 524-7566