

HOG MARKETS

New Holland Hog Auction

NEW HOLLAND, PA
January 7, 2002
Report Supplied By USDA
HOG RECEIPT TODAY 874, LAST MONDAY 682, LAST YEAR 1031
BARROWS AND GILTS. Compared to last Monday; prices were mostly 1.00-1.50 higher, with 40-45 percent lean trading mostly steady. PERCENT LEAN WEIGHT PRICE 49-54 220-285 lbs 35.50-37.25 45-50 220-285 lbs 34.10-36.10 40-45 290-340 lbs 31.25-35.75, late 29.25-30.00 355-450 lbs 28.75-30.75
SOWS. 300-450 lbs steady to 2.00 higher; 450-650 lbs 1.00-2.00 higher. US 1-3 300-450 lbs 20.00-24.00 450-500 lbs 23.00-27.00 500-650 lbs 26.00-28.00
BOARS. 200-300 lbs 25.00-28.00 300-700 lbs 15.00-16.00

Eastern Corn Belt Direct Hogs

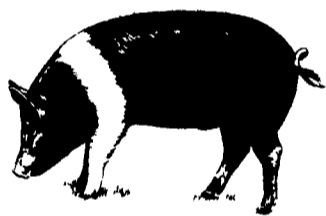
Des Moines, Iowa
January 9, 2002
Report Supplied By USDA
EASTERN CORN BELT DIRECT DAILY HOGS, for Wed., Jan 9, as of 1:30 p.m.
CURRENT VOLUME TODAY: Producer Sold: Negotiated Actual. 16,169 head, Other Market Formula: 7,261, Swine or Pork Market Formula: 38,199, Other Purchase Arrangement: 3,699, Packer Sold (All purchase types) Actual today 638
NEGOTIATED PURCHASES (Including packer sold), BARROWS AND GILTS 8,783 head. Compared to prior day's close, 50 to 75 lower. Base Market Hog. 185 lb Carcass Basis, Plant Delivered (9-1 1 inch backfat, 6 sq. in. loin/2 0 depth) Range. \$41.00 - 50.68, wtd avg \$48.33
Purchase volume by state of origin. Delaware 233, Illinois 17,15, Indiana 14,265, Kentucky 1,003; Maryland 291 Michigan 5,426; Mississippi 76; New York 931, North Carolina 3,737; Ohio 1,698, Pennsylvania 3,776, South Carolina 454, Tennessee 421; West Virginia 192, Wisconsin 1,245.

New Holland Feeder Pig Auction

NEW HOLLAND, PA
January 9, 2002
Report Supplied By USDA
FEEDER PIGS: WEDNESDAY 297, LAST WEEK 200, LAST YEAR 225.
TREND: Compared to last week, feeder pigs were not tested. Slaughter pigs were steady to 10.00 higher on light offerings. Around 4 percent of the supply returned to feed. All pigs were weighed and graded on arrival and sold by the hundred weight.
HEAD WEIGHT PRICE US 2-3 13 30-40 lbs 72.00-82.00
SLAUGHTER 78 20-35 lbs 160.00-200.00 11 105.00-135.00 30 45-50 lbs 125.00-145.00 10 50-55 lbs 90.00-115.00 As Is 19 20 lbs 105.00 47 25-100 lbs 20.00-75.00
ALL PIGS CONSIGNED TO WEDNESDAY FEEDER PIG SALE MUST ORIGINATE FROM A QUALIFIED NEGATIVE OR MONITORED HERD

New Wilmington Feeder Pig Sale

New Wilmington Livestock Market
Report Supplied By PDA
Friday, June 4, 2002
RESULTS ON 100 FEEDER PIGS. 48.0 LBS. PER PIG, 77.87 PER HUNDREDWEIGHT, 37.53 PER HEAD
10 HEAD 20-30 LBS. 82.50-92.50; 27 HEAD 30-40 LBS. 60.00-87.50; 18 HEAD 40-50 LBS. 65.00-82.50; 31 HEAD 50-60 LBS. 62.50-87.50, 12 HEAD 60-70 LBS. 52.50-75.00, 2 HEAD 75-150 LBS. 50.00



HAY MARKETS

Diffenbach Auction Center

New Holland, Pa.
Report Supplied By Auction
Monday, January 7, 2002
TOTAL LOADS: 35. Prices per ton except where noted.
ALFALFA: HIGH 210.00, AVG 160.00, 130.00 LOAD.
MIXED HAY HIGH 175.00, AVG 145.00, 150.00 LOAD.
TIMOTHY: HIGH 140.00, AVG. 120.00.
ORCHARDGRASS: HIGH AND AVG 115.00.
STRAW HIGH 150.00, AVG 135.00
EAR CORN: HIGH AND AVG 80.00.
FIREWOOD: HIGH 75.00, AVG 55.00.

Weaverland Hay

New Holland, Pa.
Report Supplied By Auction
Thursday, January 10, 2002
Hay—Straw—Grain
TOTAL LOADS: 66.
ALFALFA: 92.00-200.00.
TIMOTHY HAY: 92.00-175.00.
ORCHARDGRASS: 132.00.
MIXED HAY: 75.00-185.00.
GRASS: 70.00-142.00.
STRAW: 115.00-145.00.
OATS: 2.15 BU.
FIREWOOD: 32.00-57.00 LOAD.
CORN FODDER: 52.00-65.00.
CONTACT AUCTION AT 1030 LONG LANE ROAD, NEW HOLLAND 17557, 717-355-0834.

Belleville Hay

Belleville, Pa.
Report Supplied By Auction
Wednesday, January 9, 2002
Hay—Straw—Grain
ALFALFA HAY: 90.00-177.50
MIXED HAY: 90.00-145.00
STRAW: 100.00-117.50.

Kutztown Produce Hay Auction

Fleetwood, Pa.
Report Supplied by Auction
Saturday, January 5, 2002
Hay—Straw—Grain
ALFALFA HAY 100.00-200.00
GRASS HAY: 95.00-125.00
MIXED HAY: 65.00-155.00
TIMOTHY HAY: 125.00-140.00.
CLOVER HAY 90.00
WHEAT STRAW: 110.00-120.00.
OAT STRAW: 115.00-130.00
STRAW: 2.50 BALE.
LARGE ROUND OR SQUARE BALES 28.00
OATS 2.60-2.70 BU
FIREWOOD 35.00-95.00 LOAD
BEAN STUBBLE: 35.00.

Middleburg Hay

Middleburg, Pa.
Report Supplied by Auction
Tuesday, January 8, 2002
HAY 42 LOTS 63 LOTS TOTAL
ALFALFA 9 LOTS, 90.00-185.00
MIXED HAY 19 LOTS, 90.00-180.00
TIMOTHY: 4 LOTS, 102.50-127.50
ROUND BALES 7 LOTS, 16.00-32.00
ORCHARDGRASS 3 LOTS, 107.50-145.00
STRAW 9 LOTS, 60.00-100.00
EAR CORN: 4 LOTS, 90.00-102.50
OATS 3 LOTS, 2.00 BU
FIREWOOD 5 LOTS, 15.00-140.00 LOAD

Vintage Hay

Vintage, Pa.
Report Supplied by Auction
Thursday, January 10, 2002
Hay—Straw—Grain
ALFALFA: 125.00-137.00
GRASS: 75.00-92.00.
MIXED HAY: 135.00-165.00
STRAW: 152.00 LOAD.
CORN FODDER: 60.00

Regional Hay

January 7, 2002
Report Supplied By PDA
HAY & STRAW MARKET FOR EASTERN PA — (All Hay Good grade & better prices paid by dealers at the farm & per ton) — Hay and Straw firm ALFALFA 100.00-125.00, few to 140.00, Mixed Hay 100.00-125.00, TIMOTHY 90.00-125.00, STRAW 90.00-120.00. MULCH 30.00-60.00
SUMMARY OF LANCASTER COUNTY HAY AUCTIONS — For week ending 01/04/02 Prices per ton. 236 loads Hay, 50 Straw & 3 Ear Corn ALFALFA 110.00-185.00, MIXED HAY 90.00-205.00, TIMOTHY 95.00-172.00, STRAW 84.00-147.00 EAR CORN 85-91.00
SUMMARY OF CENTRAL PA HAY AUCTIONS — For week ending 01/04/02 Prices per ton. 98 loads Hay, 15 Straw & 10 Ear Corn ALFALFA 95.00-170.00, MIXED HAY 90.00-160.00, TIMOTHY 107.00-152.00, STRAW 60.00-137.50. EAR CORN 80.00-102.50

Westminster Hay

Westminster, Maryland
Report Supplied By Auction
Tuesday, January 9, 2002
Hay—Straw—Grain
113 LOTS.
ALFALFA 80.00, 1.60-5.00 BALE, 36.00 LARGE ROUND.
TIMOTHY: 1.70-4.10 BALE, 27.00-30.00 LARGE ROUND.
MIXED HAY: 1.30-3.20 BALE
GRASS: 137.50, 1.50-3.00 BALE, 27.00-32.50 LARGE ROUND.
CLOVER: 3.10 BALE
BLUE GRASS: 1.50-1.60 BALE
STRAW: 2.10-2.90 BALE
EAR CORN 5.75 BAG
GROUND CORN FEED 3.50-5.00 BAG
FIREWOOD 80.00-120.00 CORD

Carlisle Livestock Market, Inc.
FAT CATTLE SALE
Tues., Jan. 15 PM
Exit 44 off I-81 Turn South
Early Bird Pens
Close 2 PM
Market (717) 249-4511
Jim (717) 249-2359

PUPPIES WANTED
ALL BREEDS - AKC, ACA, Pure & Mixed
TOP DOLLAR PAID
Call Randy
570/822-2033
Pickups Every Week
Very Dependable

YODER'S Windmill Service
Specializing in new & used windmill sales & service
CALL FOR PRICING
717/532-4591
Send written inquiries to
2006 Bedford Road
Shippensburg, PA 17257
John I missed your call...
Please call again!

VINTAGE SALES STABLES, INC.
NEW MONDAY SALES
AT 10:30 AM
SELLING HEIFERS, BULLS, STEERS, FEEDER & BUTCHER COWS
BUSINESS (717) 442-4181
(717) 768-8204
FIELD REPS
KENNETH E. HERSHEY (717) 442-4874
LEON HOOVER (717) 354-5835
BUTCH BROWN (717) 626-5394
TUESDAY SALES
10:30 A.M.
SLAUGHTER CATTLE AUCTION
STEERS, BULLS, HEIFERS, COWS, FEEDER CATTLE
At Approx 1 PM
Selling Feeders
6:00 P.M.
CALVES, SHEEP, GOATS
"GET CALVES IN EARLY!"
OUR STATE GRADER STARTS AT 10:30 A.M.
TRUCKING SERVICE AVAIL
LOCAL & LONG DISTANCE
(RT. 30, 10 MILES EAST OF LANCASTER IN PARADISE, PA)

NEW HOLLAND SALES STABLES INC. THE ACTION AUCTION
Livestock Is Our Only Business
MONDAY
SLAUGHTER HOGS
EARLY BIRD HOG SALE
7:30 A.M.
Sell Your Hogs At New Holland Sales Stables Inc
See them weighed, sold and pickup your check
10:00 A.M.
HORSES
MULES
9:00 A.M.
SHEEP, GOATS & CALVES
1:30 P.M.
BEEF SALE
WEDNESDAY
HEIFER SALE 10:00 A.M.
COW SALE 12:00 NOON
HEIFERS BULLS DAIRY COWS
We have the usual run of 125 to 200 Heifers all ages
Loads of fresh cows and springers from our regular shippers
Also some local fresh cows and springers
THURSDAY
BEEF AUCTION 9:30 A.M.
BULLS, STEERS, BEEF COWS
1:00 P.M.
STOCKERS & FEEDERS
10:00 A.M.
GOATS, SHEEP CALVES
1:30 P.M.
FEEDER PIG SALE
Pigs are accepted after 6:30 A.M. State graded from 8 to 12
Dairy Barn and Feeder Pig Barn are cleaned and disinfected weekly for your protection
NEW HOLLAND SALES STABLES, INC.
12 Miles East of Lancaster Off Route 23, New Holland, Penna.
MANAGER
David Kolb
Sale Barn Office Manager:
Michael J. McDermott - 717-354-4341
FAX #717-355-0706
Order Buyer:
Aaron Martin - 717-445-4825
Field Representatives For Beef and Feeders:
Luke Eberly - 610-267-6608, 717-738-1865
Homer Eberly - 610-267-3047
Nevin Martin - 717-354-7186
Ron Ranck - 717-656-9849
Field Representatives For Goats, Sheep & Calves:
Ken Smoker - 610-593-2123