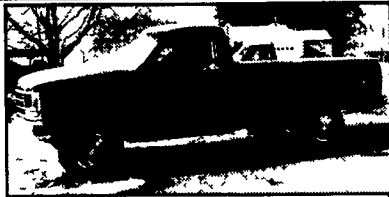


35

TRUCKS AND TRAILERS

80 Chevy pkup, good mech. some rust, 105K, \$675. 717-656-2995.

1990 Eager Beaver 20 ton, tandem, tag-along, \$4500; 1973 General 20 ton tandem tag-along, \$3800. 410-593-9866



01 DODGE 2500

Quad Cab, 4x4, 24 Valve 5.9 Cummins Turbo Diesel 5 Sp. A/C AM/FM Cass, 8800 GVW, 3.55 Ltr Slip Long Bed, 14K Mi Red
\$27,500

89 CHEVY K2500

Cheyenne 4x4, 350 Fl. AT, A/C, 8600 GVW, Rebuilt Trans, Runs Good, Good Farm Truck, 155,000 Mi, Dk Blue
\$4,200

MARTIN'S AUTO SALES

1025 W. Main St. New Holland, PA 17557
(717) 656-6621

ALL STAR



New Trucks

- (1) 2002 Mack CV703
E7-427 w/Engine Brake
T2130B, 18 Frt, 46 Rear, 227 W.B.
- (1) 2002 Mack, RD600,
E7-350, RTOF14908LL, SS440,
4.42R, W.B. 236
- (1) 2002 Mack, RD600,
E7-460, RTOF16908LL, AL461,
4.35R, W.B. 236

Used Trucks

- 1993 CH613 E7-350,
Axle Back, \$11,500.00
- 1995 CH613 42 in. High-Rise
- 1997 CH613, Axle Back,
E7-350, 10-Spd.
- (2) 1997 CH613, Axle Back,
E7-350, 10-Spd.,
64" Mid-Rise Sleeper

Many other Trucks in Stock - Call For Details.

LESHER



SALES & SERVICE

2700 Cumberland Sts. Lebanon, Pa. 17042
(Route 422 West)
website: www.leshermack.com

717-273-4535

DDA 60 series, 12 liter, out of 2001 Freightliner, approx 100,000 mi, light wreck damage, \$5,000 exchange. DDA 11 liter, good, \$2,800 outright. DDA 353 Silver turbo, good, power unit, \$3,800. DDA 453 turbo eng, good, \$2,800. Several 5.9 Cummins w/rotary or in-line injection pumps. 717-445-9907.



USED EQUIPMENT

LIVESTOCK BODIES

- 14'x96"x6'3" Eby
 - (2) 18' Bodies
 - 9'x94"x6'9" Eby
 - 10'x92"x6'6" Eby Deck Rail & Winch
 - 10'x96"x6'6" Eby
 - 11'x92"x6' Eby
- Above Bodies Would Make Great Poultry Bodies*

LIVESTOCK TRAILERS

- 2001 Bison 16'x7'x7', Red Steel G-Neck
- 1998 Eby 28'x102"x6'6" Alum Gooseneck
- 1998 4-Star 30'x8'x6'6" Alum Gooseneck Hydraulic Brakes
- 1995 Eby 24'x7'x6'6" Hydraulic Brakes, Aluminum Gooseneck

M.H. EBY, INC.
1194 Main St.
(Route 23)
Blue Ball, PA 17506
(717) 354-4971
(800) 292-4752

'89 Peterbilt
tri-axle dump truck
3306 Cat motor
8LL trans,
alum Hewey body
\$33,000 OBO
610-562-3124
610-587-6075

1993 Ford Super Duty 450 7.3 dsl, 5 spd, 105,000 mi Dismantling for Parts

14' Reefer Body ThermoKing Unit CB w/electrical standby

(814) 443-6228

Ford F350, 1993, king cab, dually, 460 V8, 5th wheel & gooseneck hitches, auto, all options, 82,000 mi, \$10,000. 814-667-3666
1990 Freightliner, ready to work, must sell. 610-269-7318.

FLATBED BODIES



Lengths to 32', choice of 5 widths.

GRAIN BODIES

Lengths to 24', landscape and general purpose dumps to 12'



LANDSCAPE BODIES

Lengths to 12' We'll build to your specs!

Eby is the leading manufacturer of aluminum bodies and trailers for agri-transportation. Our products are designed for superior strength, reduced weight for greater payload capacity, minimum maintenance and higher resale value. In addition to premium standard features, we offer full custom options built to your specs



IN ALUMINUM BODIES EBY BUILDS IT

Blue Ball, PA 800-292-4752

PRE-OWNED CARS PRE-OWNED TRUCKS PRE-OWNED MPV'S

'98 FORD ESCORT SE Station Wagon A/C A/OD 1-Owner	'98 FORD F150 4x4 Reg Cab XLT V8 A/C A/OD	'99 DODGE GRAND CARAVAN 25 000 Miles
'97 PONTIAC GRAND AM SE A/C 5 Spd 45 000 Miles	'95 FORD F150 4x4 6 Cyl 5 Spd A/C, Work Truck	'96 CHEVY S10 BLAZER 4x4 1 Owner
'00 FORD MUSTANG V6 A/OD A/C, 1 Owner 11 000 Miles	'95 FORD F150 4x4 Super Cab XLT A/C V8 5 Spd 71 000 Miles	'98 FORD EXPLORER XLT 4 Dr V6 Power Equipment 1 Owner 36 000 Miles
'98 NISSAN SENTRA GXE Sedan A/C 5 Spd 45 000 Miles 1-Owner	'98 FORD F150 4x4 Regular Cab XLT V8 A/OD A/C Flareside	'99 DODGE DAKOTA SLT Club Cab 4x4 39 000 Miles
'94 LINCOLN MARK VIII Fully Loaded Moon Roof Leather & More	'98 FORD F150 4x4 SUPER CAB XLT V8, A/OD A/C 1-Owner 28 000 Miles	'99 FORD WINDSTAR SE Power Equipment Cruise & Tilt 21 000 Miles
'98 LINCOLN CONTINENTAL Fully Loaded 28 000 Miles	'97 FORD F150 4X4 S/Cab Lariat Pkg, 4.6L 5 Spd 1-Owner 47 000 Miles	'96 JEEP GRAND CHEROKEE Laredo Pkg, Power Equip, 1-Owner 45 000 Miles
'99 MERCURY COUGAR V6 A/C A/OD 23 000 Miles	'95 FORD F150 4x4 Regular Cab V-8 A/OD A/C XLT 53 000 Miles	'96 CHEVY TAHOE LT 51 000 Miles
'99 FORD ESCORT ZX-2 Sport A/C 5 Spd Only 19 000 Miles	'95 FORD F250 4x4 Reg Cab V-8 A/OD A/C Work Ready	'99 FORD EXPLORER 2 Dr Sport, A/C 5 Spd 1 Owner Only 19 000 Miles

ENGLE-RISSINGER AUTO GROUP

FORD * LINCOLN * MERCURY * JEEP

Midway Between Halifax And Millersburg • 717-896-3421 • 1-800-242-8075
HOURS: Monday-Friday 8:30 AM - 8:30 PM; Saturday 8:30 AM - 3:00 PM

ROCK SPRINGS HARDWARE



Closed Utility Trailers

3,500# tandem axles, 24" crossmembers on floor, 16" crossmembers on walls, 3/8" plywood walls, 3/4" plywood floors



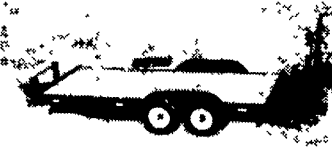
Landscape Trailer

16'x77", 18'x77", 16'x83", 18'x83", w/3500lb or 5200lb axles, radial tires, brakes all the way around, w/break away



Triple Crowns Dump Trailer

6'x10', 6'x12', 7000 lb GVW & 10,000 lb GVW Powder Coated



18' Contractors Special

capacity 12,000#, 6" channel frame with 6" channel wrap-around tongue, two 6,000# eight lug 750x16 Tires, all wheel electric brakes with breakaway kit



24' Tandem Dual Pintle Pull

10" channel frame (15 3 pounds per foot), tandem dual oil bath axles, all wheel electric brakes with breakaway kit, 2" treated wood floor (20' flat deck, 4' dovetail), stake pockets and rub rails



28' Tandem Dual Gooseneck

load capacity 20,000#, height of deck 35", 10" I-beam frame, 10,000# tandem dual oil bath axles, all wheel electric brakes with breakaway kit



20' Hauler Tag-Along Deckover

Trailer Weight 3000#, Load Capacity 9 000#, Height of deck 35", 8" I-beam frame, 5200# EZ Lube axles all wheel electric brakes w/breakaway kit, 2" treated wood floor, 16" flat deck 4 wood dovetail, stake pockets and rub rail



24' Tandem Deckover Gooseneck

load capacity 13,000#, 8" I-beam frame, two 7,000# eight lug EZ Lube axles, all wheel electric brakes with breakaway kit



20' Lowboy Gooseneck

6" channel frame w/3" channel crosspieces, two 5200# EZ Lube axles-all wheel elec breaks w/breakaway kit, 2" treated wood floor, 20' flat deck, 83" between fenders, stake pockets & rub rail chain box between neck uprights

1320 Rock Springs, Rising Sun, MD

1/2 Mile South of Lancaster County on Rt. 222; Open 7 Days A Week: Mon.-Sat. 8-6; Sun. 8-4

410-658-5978 • 1-800-858-0288

90 Days Same As Cash With Approved Credit