

Special Election Needed For York FSA

YORK (York Co.) — York County farmers and farm owners in approximately one-third of York County will have an opportunity to participate in a special election to select a representative

to the Farm Service Agency Committee.

"This special election resulted from a high percentage of ballots returned to the county office because addresses on the ballots did

not meet U.S. Postal Service requirements," according to Wayne Kurtz, county executive director for the York FSA Office.

Kurtz stated, "Since approximately 40 percent of the ballots

were never delivered to potential voters, we felt it prudent to have a special election and reissue the ballots. This election covers the following townships: Chanceford, Fawn, Hellam, Lower Chanceford, Lower Windsor, Peach Bottom, Springettsbury, Springfield, Spring Garden, Windsor and York.

This committee election is normally held the first Monday each December. This special election establishes Jan. 8 as the final date to return ballots. Counting is scheduled for Friday, Jan. 11 at 8:15 a.m. in the county office. Producers with questions should call the county FSA office at (717) 755-2966, ext. 2.

EMHERR

EQUIPMENT INC. • FARM & HOME CENTER

VISIT US AT THE
KEYSTONE FARM SHOW
Building 5 - Booth 506



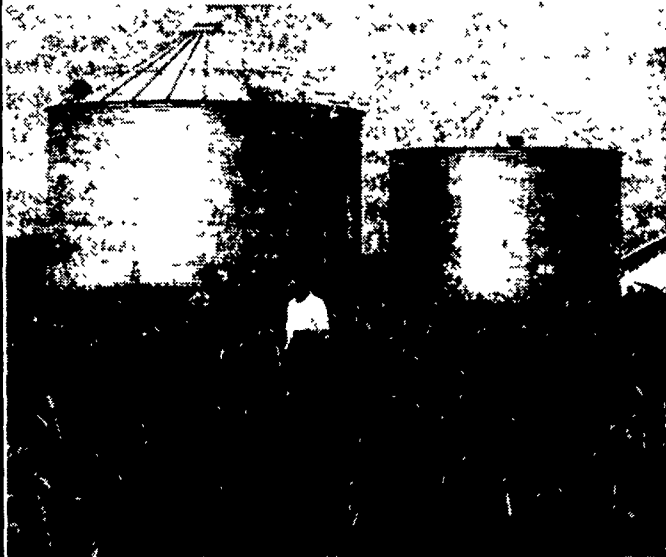
PROPEL PROFITS WITH A VANE AXIAL

Dependable and Economical Airflow for Many Bin Applications



THE CENTRIFUGAL PATH OF LEAST RESISTANCE

Medium or High Static Pressure Fans Built To Do The Job!



provides personal service to every customer. That keeps us one step ahead of the rest.

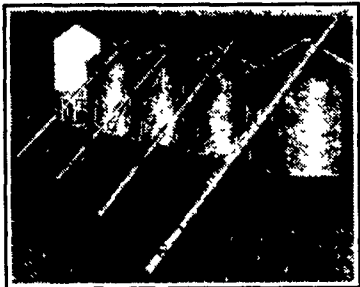
New GSI Feed Bins

Delivered & Setup

Also In Stock Used Feed Bins



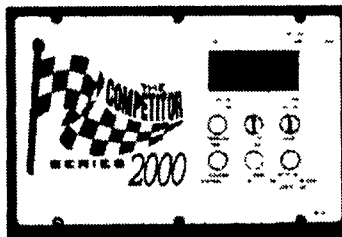
- Weight-Tronix Feed Mill
- Transport Augers
- Bucket Elevators
- Stirring Systems
- Utility Augers
- Feed Bins
- Wet Tanks
- Grain Bins
- Air Drying Systems
- Grain Dryers
- Parts & Motors



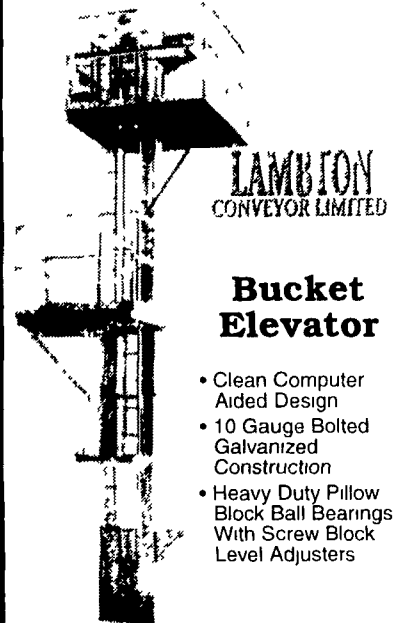
Westfield Grain Augers
BUY NOW, SAVE NOW
8" & 10" Transport Augers (In Stock)
Knocked Down or Assembled



AUTOMATIC BATCH OR CONTINUOUS FLOW GRAIN DRYERS



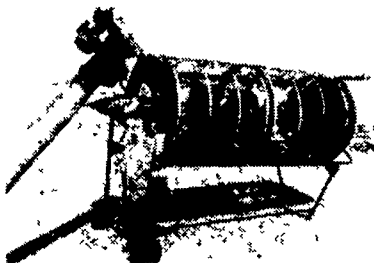
The Competitive Edge
"Smart system" eliminates guesswork.
Grain Dryer
On Display at Ag Progress



LAMBTON CONVEYOR LIMITED

Bucket Elevator

- Clean Computer Aided Design
- 10 Gauge Bolted Galvanized Construction
- Heavy Duty Pillow Block Ball Bearings With Screw Block Level Adjusters



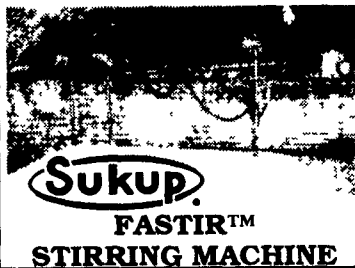
Sukup Grain Cleaner

ORDER NOW FOR BIG SAVINGS!

- 2 Stage Cleaning
- 1600 Bu./hr Cap (15% Corn)
- 8" Fill Auger w/Motor
- Tapered Inner Drum
- Outer Drum 39"x6'

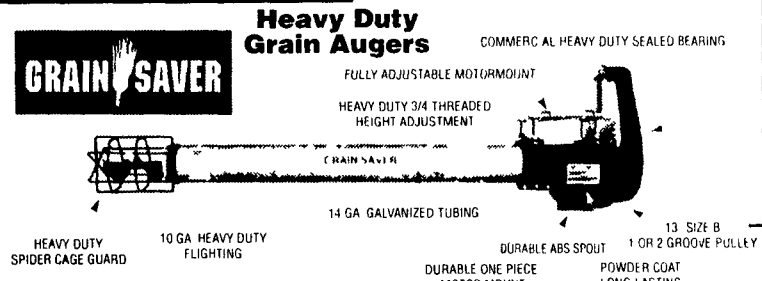


HIGH CAPACITY GRAIN UNLOADER

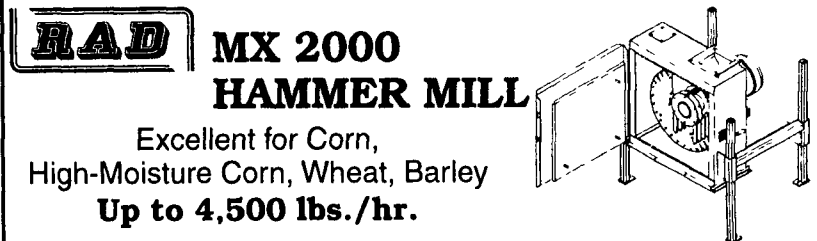


Sukup FASTIR™ STIRRING MACHINE

- Simple and dependable
- Cuts drying time and costs
- Eliminates overdried grain
- Add extra augers at any time
- Simplified design makes carriages self-cleaning
- Angled shield on carriage allows stirring closer to the wall



Heavy Duty Grain Augers



RAD MX 2000 HAMMER MILL
Excellent for Corn, High-Moisture Corn, Wheat, Barley
Up to 4,500 lbs./hr.

Also Stocking a Full Line of Hoses, Fittings & Quick Couplers

Storage TANKS

Many Shapes and Sizes Available



425 Gal	400220	\$199.00
550 Gal	.400240...	\$259.00
1000 Gal	.400040	\$349.00
1500 Gal	400410	\$449.00
2100 Gal	.401780...	\$799.00



Mini Bulk Tanks



Horizontal Leg Tanks



Pickup Truck Tanks



Applicator Tanks

NORWESCO

PACER PUMPS

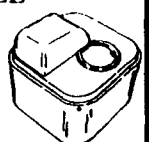


For Ag, Construction, Marine
All 2" Dia.
• 3-1/2 HP Briggs & Stratton
• 5 HP Briggs & Stratton
• 5 HP Briggs & Stratton Intek
• 5.5 HP Honda

MiraFount



ENERGY FREE WATERERS
THE ORIGINAL ENERGY FREE WATERER... COPIED BUT NEVER EQUALLED



EMHERR FARM & HOME CENTER
464-3321 or 800-732-0053
www.acehardware.com/emherr
Herrville Rd. & Rt. 272 South
2 1/2 Miles South of Willow Valley Square
Not Responsible For Typographical Errors

Mon-Fri. 6:30 am-8:00 pm
Sat. 7:30 am-6:00 pm

