

## 2002 Farm Show Meeting Room Schedule

### Friday, January 4

Room E 2:00PM to 7:00PM PA Floral Industry Assoc

### Saturday, January 5

Room B All Day International Day  
 Room C All Day International Day  
 Room D All Day International Day  
 Room E 10:00 AM to 11:00AM Rabbit and Poultry Correspondence Courses  
 1:30PM to 3:00PM PA Ladies Angus Auxiliary  
 3:00PM to 4:00PM Pennsylvania Draft Horse & Mule Association  
 4:00AM to 6:00PM PA Hereford Queen Interviews  
 6:00PM to 8:30PM PA Dorset Breeder's Association

### Sunday, January 6

Room B 10:00AM Non-Denominational Worship Service  
 1:00PM to 2:45PM Pennsylvania Junior Angus Association  
 Room C 10:00AM Non-Denominational Worship Service  
 1:00PM to 2:30PM Pennsylvania Junior Hereford Association  
 2:30PM to 3:30PM PA Limousin Breeders Association  
 Room D 10:00AM Non-Denominational Worship Service  
 12:00 to 1:30PM Pennsylvania Hereford Association  
 1:30PM to 4:30PM IFYE Association of PA  
 5:00PM to 6:30PM Pennsylvania Maine Anjou  
 Room E 10:00AM Non-Denominational Worship Service  
 12:00 to 1:30PM PA Cattlemen's Association  
 2:00PM to 6:00PM Pennsylvania Sheep & Wool Growers Association (PA State Lamb & Wool Queen Contest)

### Monday, January 7

Room B 10:00AM to 11:00 AM PennAg Industries/State Conservation Commission  
 12:00 to 1:00PM Pennsylvania Shorthorn Association  
 1:00PM to 3:00PM PA State Grange  
 3:30PM to 5:00PM PA Ag Republicans  
 Room C 8:30AM to 7:30PM FFA-PDE  
 Room D 8:30AM to 7:30PM FFA-PDE  
 Room E 3:00PM to 8:00PM Potato Judging

### Tuesday, January 8

Room B 10:00AM to 12:30PM PA State Plowing Contest Committee  
 1:00PM to 3:00PM Keystone Horse Pullers Association  
 Room C 10:00AM to 12:00PM Penn's Agr-Women  
 1:00PM to 5:00PM USDA-Farm Service Agency  
 Room D 10:00AM to 5:00PM Pennsylvania Certified Organic  
 Room E 8:00AM to 4:00PM Potato Judging

### Wednesday, January 9

Room B 9:00AM to 12:00PM PA Comedele Assoc  
 2:00PM to 4:00PM Keystone Pony Pullers  
 4:00PM to 6:00PM PA Farm Show Scholarship Foundation

## SCHEDULE OF "SUPREME CHAMPION AWARDS"

Friday (closed to public)	3:00 p m	-	Poultry "Best of"	LA
Saturday	9:30 a m	-	Swine	SA
Sunday	11:00 a m	-	Draft Horse	LA
Monday	2:15 p m	-	Jr Market Swine	LA
Monday	2:30 p m	-	Beef	LA
Tuesday	2:30 p m	-	Dairy	LA
Tuesday	4:10 p m	-	Jr Market Lamb	LA
Wednesday	3:15 p m	-	Jr Market Steer	SA
Wednesday	4:15 p m	-	Sheep	LA
Thursday	9:15 a m	-	Jr Market Goat	LA

## LOCATION OF DAILY ATTRACTIONS SATURDAY THROUGH THURSDAY

Apairy Products - EI	Maple Products - EL
Art Exhibition - ML	Milking Parlor - N
Baby Chicks - LAL	Mushrooms - WL
Beef Cattle - NW	Nuts - EL
Butter Sculpture - E	Older Pennsylvania's Center - ML
Cafeteria - MS	Pennsylvania Food Court - E
Cooking Demonstrations - WL	Pennsylvania Food Pantry - WL
Christmas Trees - ML	Potatoes - WL
Commercial & Education - M	Poultry - LAL
Corn - NEU	Rabbits - LAL
Exhibits - E, LAL, LAU, M, N, O	Sheep - W
Dairy Cattle - N	Small Grains - NUE
Dressed Poultry - WL	Snack Bar - EC
4-H & Vo-Ag Exhibits - LAL, LAU	Souvenirs - EC
Family Living Exhibits - NUE	Swine - W
FFA Landscape Exhibits - LAL, LAU	Tobacco - NEU
Fruits - EL	Vegetables - WL
Fun Safety Poster Contest - NEU	Vocational Horticulture - NEU
Goats (Friday Only) - LAL	Wine - NEU
Hay - NEU	Wool - NEU
Horses - NEL	

Room C 9:00AM to 3:00PM PA Nut Growers Assoc  
 3:00PM to 5:00PM Pennsylvania Junior Hereford Association  
 Room D 9:00AM to 12:00PM PA Maple Syrup Producers Council

### Thursday, January 10

Room B 6:30AM to 9:00AM FS Scholarship Foundation Breakfast  
 1:30PM to 5:30PM PA FFA Foundation  
 Room C 6:30AM to 9:00AM FS Scholarship Foundation Breakfast  
 Room D 6:30AM to 9:00AM FS Scholarship Foundation Breakfast  
 Room E 6:30AM to 9:00AM FS Scholarship Foundation Breakfast

### Pennsylvania Room

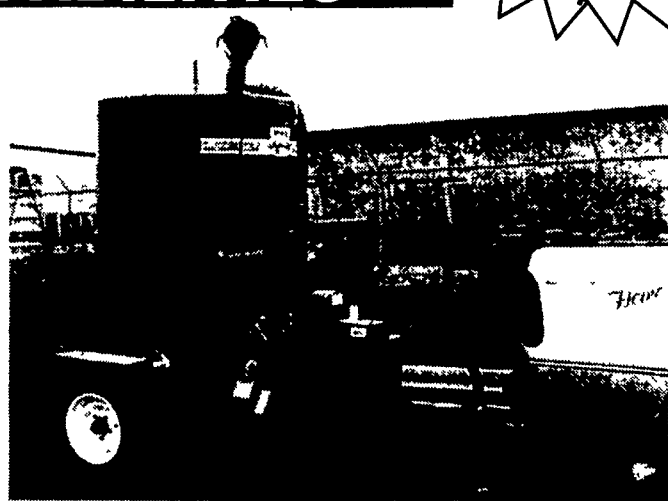
Saturday, January 6 All day FFA PDE  
 Sunday, January 7 All day FFA PDE  
 Monday, January 8 All day FFA-PDE  
 Tuesday, January 9 8AM to 10AM FFA-PDE

# EMM SALES & SERVICE WALINGA AGRI-VAC

## FOR MAXIMUM LOADING CAPABILITIES

See Us At  
The Keystone  
Farm Show  
Jan. 8, 9 & 10  
Building #1  
Booth 753  
& 754

UNITS  
IN  
STOCK



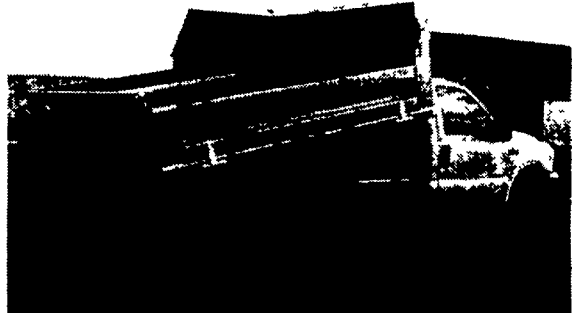
Agri-Vac, Walinga 510 Deluxe  
Completely reconditioned unit, new paint, factory rebuilt blower and airlock, Exceptional machine - ready to work • \$9,995



Light Weight  
Aluminum  
Bodies

Model	Corn & Barley	Wheat	Beans	HP	PTO Speed	Line Size	Super Chrome Blower	Discharge Height**
3510G	700	500	450	Gas	-	4"	Yes	-
5510	1650-1700	1500	1450	30	-	4"	Yes	-
5614	2500	2200	1900	70-85	1000	5"	Yes	13'8" Min
6614	3600	3200	2800	110-130	1000	5.86"	Yes	13'8" Min

2001 Ford F-450  
XL Package  
7.3L Power Stroke Diesel  
15,000 GVW  
Tow Package  
Air Conditioning  
up to 3 ton Legal pay load  
Minimum Upkeep  
Modern Look  
Great Resale Value  
Was \$41,250  
**NOW \$36,840**



Starting @ \$7500<sup>00</sup>

EMM Sales & Service, Inc.

141 Zooks Mill Road, Brownstown, PA 17508 Phone 717-859-3294  
Contact John Conrad, Dick Shultz or Rich Sheidy

NATIONWIDE - TOLL FREE 1-800-289-3294  
FAX 717-859-3294

www.emmsales.com email:john@emmsales.com