



1996 Peterbilt  
Detroit 430 10 sp, 11:25 all Alum.  
Dual Everything, Loaded & Low Miles,  
Go First Class  
\$28,000.00 OBO  
717/626-8538

Barrett cattle  
trailer, 1995,  
like new,  
101"x50'  
\$20,000

(570)  
673-8834

**MOTORS**

New & Rebuilt  
350, 368, 427, 454

6.2 Diesels

Rebuilt & Used

Will Install

717-762-6415



99 15 passenger E350 van,  
V10 Auto, Rear AC, PW, PL,  
Cruise and tilt, Ready to roll  
#P2230

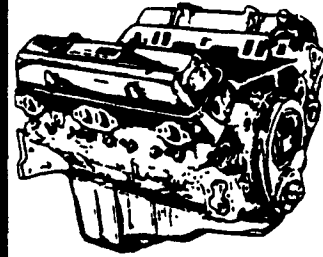
**\$18,498**

Call New Holland Ford for details:  
717-354-4901

**JONES**

**GM Parts**

**THE FEELING IS GENUINE**



GM GOODWRENCH  
350 V8 1973-85  
Part Number  
10067353  
New Engine - Not  
Rebuilt  
36 Month or 50,000  
Mile  
Warranty

New Engine - No Core Fee **\$1,299<sup>00</sup>**

**WE'LL  
MATCH ANY  
COMPETITOR'S  
PRICE!**

**Goodwrench  
Transmissions  
Now In Stock!  
Call For  
Great Prices**

Call 394-0711 for prices on other  
New or Remanufactured  
Goodwrench Engines. 2.5 Liter thru  
454 cid. Gas and Diesel

Chevrolet - Pontiac - Olds - Buick - Cadillac - GMC

**JONES GM PARTS CENTER**

1335 Manheim Pike, Lancaster, PA 17604  
Easily Located on Rt. 72 Just off of Rts. 283 & 30  
Hours: Mon-Fri 7:30 a.m. - 8 p.m. Sat 7:30-3

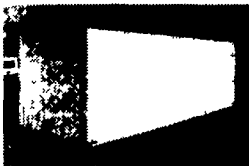
(717) 394-0711

**MORE THAN JUST POWER.**



1998 International 4700  
DT-466-190 HP, 5 Spd.  
Trans., 19' Jerr-Dan  
Rollback w/Wheel Lift,  
70,000 Mi., \$31,900

92 Nissan UD 1800  
Jerr-Dan Wrecker,  
Sticks in Line 6 Diesel  
\$13,900



Supreme 24 Ft.  
Dry Freight Body  
(New)



14 Ft. Stake  
Dump Body  
(New)

INTERNATIONAL TRUCKS  
SALES & SERVICE  
610-589-4581 or 800-860-4581

**Woodcrest Motors**

SPECIALIZING IN TRUCKS & VANS  
1200 North Reading Rd., (Rt. 272) Stevens, (Lancaster Co.) PA 17578  
717-336-3130



98 CHEVY  
VENTURE  
Extended, 4  
Dr., V6, AT,  
Dual A/C,  
Most Options,  
Dk Green,  
54,000 Miles  
\$12,800



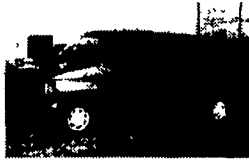
95 CHEVY  
ASTRO  
EXTENDED  
LT, AWD, V6,  
AT, Dual A/C,  
91,000 Miles,  
Teal  
\$8,995



99 FORD E350  
CLUBWAGON  
XLT, 12-Pass,  
V-8, AT,  
Dual A/C, Most  
Options, White,  
65,000 Miles  
\$14,995



95 GMC  
SAFARI  
EXTENDED  
AWD, SLE,  
V6, AT, Dual  
A/C, Maroon,  
69,000 Miles  
\$9,995



97 FORD XL  
CLUB  
WAGON  
V8, AT, Dual  
A/C, 8-Pass,  
Dk. Blue,  
75,000 Miles  
\$11,900



97 CHEV  
1500  
EXPRESS  
8 Pass, 5.7 V8,  
AT, Dual A/C,  
36,000 Miles,  
Blue  
\$11,995

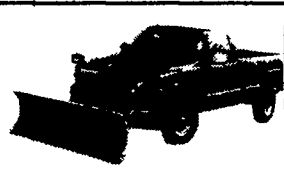
**JONES QUALITY PRE-OWNED BEST BUYS!**

PONTIAC • HONDA • GMC TRUCK • ACURA • USED CAR CENTER  
1335 Manheim Pike • Lancaster, PA  
**717 394-0711**  
QUALITY PRE-OWNED BEST BUYS!

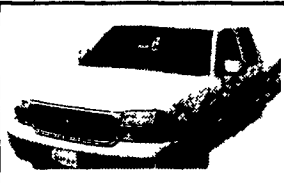
Prices based on straight sale. Tax and tags extra. Trades accepted at actual cash value. Must present this ad at time of purchase for sale price.



**2001 CHEV K2500  
CREW CAB 4X4**  
LS, Auto, Air, V8, #6301  
Was \$33,000  
SALE **\$28,000**



**2001 GMC K25 4X4  
W/SNOWPLOW**  
Auto, Air, 8100 V8, Allison Auto,  
SLE & More! #29761  
MSRP \$37,717  
SALE **\$31,999**



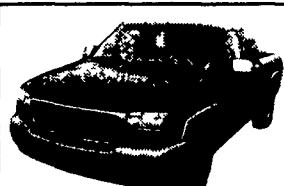
**2001 GMC K15  
XCab 4x4**  
Auto, Air, 4Door, V8, & More  
#31099, Was \$27,286  
SALE **\$22,444\***  
\*Price Includes \$2,000.00 in GM Rebates



**NEW 2001 GMC K35  
XCAB 4X4 DUALY**  
AT, Air, 6000 V8, Trailering Pkg &  
More MSRP \$33,043, #30535  
SALE **\$29,900**



**2000 GMC K15  
XCAB**  
4x4, Auto, Air, 5300 V8, SLE, 18K  
Miles, #6326 Was \$24,900  
SALE **\$21,900**



**2000 GMC K15  
XCAB 4X4**  
Auto, Air, 5300 V8, SLT  
#6308, Was \$24,000  
SALE **\$19,800**



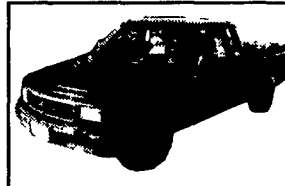
**99 CHEV K15 XCAB**  
4x4, Auto, Air, V8, LS, Black,  
13K Miles, #6354, Was \$25,900  
SALE **\$22,400**



**99 CHRYSLER TOWN  
& COUNTRY**  
Auto, Air, V6, LXI,  
#6248 Was \$18,900  
SALE **\$16,200**



**94 PLY GRAND  
VOYAGER**  
Auto, Air, V6, 7 Pass, 83K Miles  
Was \$7,995 #6356  
SALE **\$5,500**



**94 GMC SONOMA  
XCAB**  
Air, SLS, 5 Spd  
Was \$7,700 #6333  
SALE **\$4,950**



**97 GMC JIMMY  
4X4**  
SLT, Auto, Air, V6, #6323,  
Was \$15,900  
SALE **\$12,990**



**97 GMC K1500  
PICKUP 4X4**  
Auto, Air, 350 SLE  
Was \$16,700 #6334  
SALE **\$13,900**



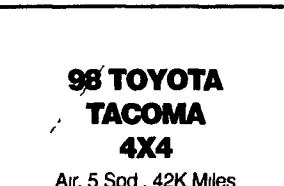
**96 FORD EXPLORER  
4X4** Eddie Bauer V8, Auto, Air  
Was \$14,900 #6343  
SALE **\$12,700**



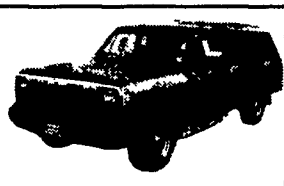
**96 CHEV.  
SUBURBAN LT 4X4**  
Auto, Air, 350, LT, Loaded, Dk.  
Blue, #6316, Was \$15,900  
SALE **\$12,500**



**95 CHEV SUBURBAN  
4X4**  
Auto, Air, LS, 350, #6212,  
Was \$15,900  
SALE **\$13,200**



**98 TOYOTA  
TACOMA  
4X4**  
Air, 5 Spd., 42K Miles  
Was \$14,700  
#6329  
SALE **\$11,200**



**93 DODGE RAM 150**  
4x4 Auto, Air, V8, Cap  
#6325 Was \$7,995  
SALE **\$4,900**



**93 GMC SUBURBAN  
4X4 SLE**  
Auto, Air, Very Clean, #6254,  
Was \$13,800  
SALE **\$9,900**



**89 FORD F150 4X4**  
5 Spd., Air, 300 6 Cyl.,  
75K Miles  
Was \$6,995 #6331  
SALE **\$4,250**



**88 CHEV  
CONVERSION VAN**  
Hi Top, Auto, Air, V8, Very Clean,  
#6330, Was \$6,800  
SALE **\$3,800**