

**HEATING WITH CORN MAKES CENTS!**

**LMF Manufacturing**

570-748-7080  
www.americasheat.com  
E-mail: lmf@americasheat.com



'92 Ford Aeromax Tri Axle Dump Truck w/19-1/2 Alum Heated Bed w/Elect Tarp, New Drive Tires 8LT Trans, 425 Cat Engine \$38,000



'92 Freightliner Tandem Axle 400 Cummins Eng 9 Spd Trans 22 Live Net Bed w/Hyd Tailgate \$25,000



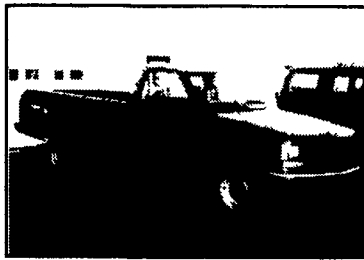
'88 Ford Cargo w/6.6 Liter Ford Engine 5-2 Trans w/20 Live Net Bed w/Hyd Tailgate \$16,000



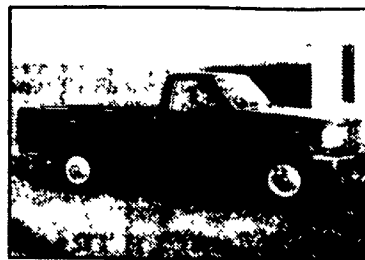
'84 Int. 4900 w/9 Liter Dsl Engine, 5-2 Trans, w/18' Silage Body w/Hyd Tailgate \$8,500

'89 Ford Cargo w/New Ford 6.6 Liter Eng w/16' Alum Dump Bed \$10,500

Contact Jason Forrester  
717-729-5038



1997 Chevy Cheyenne 2500 HD, 3/4 Ton, 2WD, 350 Auto, PS, PB, Air, AM-FM Cass, 8600 GVW, 373 Ratio, Limited Slip Diff, 80,000 1 Owner Miles, Red \$8,975



1995 Ford XL F250 2WD, 302 EFI Auto, PS, PB, AM/FM, 6,600 GVW, 47,000 1 Owner Miles, Dark Blue, Ex. Cond. \$8,975

**A&J AUTO SALES**

798 E. Main St., Rt. 322 East, Ephrata, PA 17522  
• 717-733-2873



2000 FORD TAURUS SE 3.0 V6, AT, PW, PDL, PM, A/C, TILT, CRUISE, CASS., 45K MI.. BLACK, FRONT DAMAGE, NEEDS AIRBAGS - \$4,500  
717-355-0644  
ANTHONY LANDIS AUTO

**USED TRUCKS FOR SALE**



1997 DODGE RAM 2500 Club Cab, 4x4, SLT Laramie, Cummins Diesel, 5 Spd., A/C, Most Options, 147K Miles, Long Bed, Black \$19,500

- 1999 VW GOLF 4 Door Diesel, 5 Spd., 94K Miles, Black .. \$10,500
- 1997 GMC 1500 SUBURBAN 4X4, V8, AT, Most Options, Barn Doors, Leather, 95K Miles, Black..... \$15,300
- 1997 FORD F150 REG. CAB 4x4 XLT LARIAT, 351 V8, AT, A/C, Most Options, 51K Miles, Black..... \$15,900
- 1996 DODGE RAM 2500 SLT LARAMIE, 4x4, Cummins Turbo Diesel, AT, A/C, Most Options, 208K Miles, Blue & Grey ..... \$11,600
- 1995 FORD F250 XLT, 4X4, V8, AT, A/C, Most Options, Alloy Wheels, 80K Miles, Green & Silver..... \$10,900
- 1992 FORD F250 XLT, 4x4, Long Bed, V8, AT, A/C, Most Options, 79,800 Miles, Black..... \$10,500

**SCHAEFFERSTOWN AUTO & TRUCK SALES**  
Rt. 501, 1-1/2 miles South of Schaefferstown  
717-949-2812



**WM. COHEN & SONS, INC.**  
"THE TRUCK PARTS STORE"

HEAVY DUTY TRUCK PARTS - NEW & USED - REBUILT REARS & TRANSMISSIONS  
610-269-1298 Fax 610-269-0787 www.cohentruckparts.com



69 Sicard Snowblower Model BJD1, propelled by Chrysler industrial engine, blower powered by 220 Cummins 8 25x20 tires, 100" wheel base, 4 spd transmission



96 Morgan 22' Reefer Body Swinging back doors, curb side door, damage on Thermo-King sheet metal



92 Hino Model FE 6 cyl turbo diesel, 6 spd, hyd brakes, 18' reefer body w/rollup door, roll up curb side door



New Flatbeds Available Sizes currently available are 12', 14', 20', 22' and 24' Racks are also available



99 GMC Model 6500 454 V-8, auto, single rear, PS, A/C, AM/FM radio, 11x22 5 tires, 24' van body, 25,950 GVW, 78,000 miles



Michigan Loader Model L30 Quick Coupler, Comes With 1 Yard Bucket and 60" Forks, Runs Excellent

Ingersoll Rand Air Compressor, Type 30, 15 HP 3 Phase

4 I-Beams, 49' Long, 28" High w/12-1/2" Web



90 Chevy 66 Passenger School Bus, 8 2 Detroit, auto, PS



95 Int. 4900 DT466 7 spd, single rear, PS, A/C, AM/FM radio, air brakes, 20' Reefer Body, Swinging back doors, curb side door



00 F-250/350 Pickup Beds



(9) 40' - 45' 1970's & newer Steel Flatbed Trailers (also have drop deck trailers) some have sliding tandems, all in good condition. \$2,500/Ea. and Up

11.1 60 series Detroit engines

12.7 60 series Detroit engines

8.2 non-turbo Detroit engines



85 Ford F-700 429 V-8, 5 spd, 2 spd rear, air brakes, 31,500 GVW



84 Ford LN800 5 spd, 2 spd rear, air brakes, 31,500 GVW



91 Isuzu NPR, 4 cyl turbo-diesel, auto, 14' reefer body, 110 electric, 195,969 mi



200 Gal. & 550 Gal. Plastic Tanks For Sale



Aluminum Tanker/Trailers 7500 gal and up



25 HP Quincy Air Compressor 230 Amp, 3 Phase



96 Toyota Pickup SOLD 89 GMC Sierra 4WD Pickup, Loaded 93 Toyota Pickup 95 Toyota T-100 Pickup (Not Shown)



87 Nissan Forklift Mdl P-2700 3000 Lb Capacity, 2 Stage Lift, approx 15' High, Pneumatic Tires

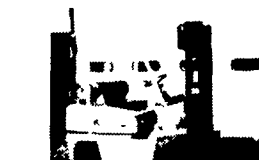
1 - 4' Work Bench  
2 - 6' Work Bench w/Electrical Strip Lights  
1 - 5' Work Bench



Locker system, door opening approximately 12"x12"x18" deep

**Metal Storage Cabinets**

- 30" W x 52" H x 26" D
- 32" W x 72" H
- 36" W x 78" H
- Heavy Duty Cabinet 43" H x 34" D
- Metal Open Cabinet Shelves 36" W x 55" H x 15" D
- 3 - Wooden Office Chairs



Kalmar Forklift, propane powered, 4435 lb capacity, 42" forks, 192" lift, cushion tires, 2194 hours



Komatsu Forklift, propane powered, 4480 lb capacity, 42" forks, 188" lift, cushion tires, 6457 hrs

**NORTH EAST ENTERPRISES**  
SALES - SERVICE - PARTS - RENTALS



Ask Us About Our Used Trucks & Trailers



Happy New Year



CALL TOLL FREE 1-877-526-3655

After Hours: 410-658-0818 M-F 6-9 PM EST

Web Address: www.etrailersales.com

Email: trailerinfo@neent.com

Ask for Wayne or Julie Brown