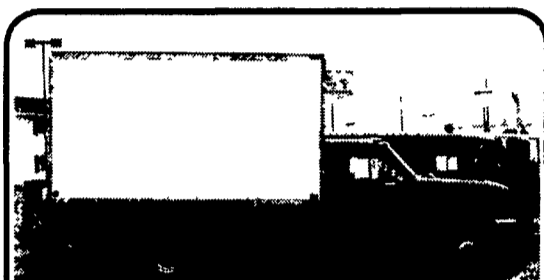


'91 Freightliner, 270 hp, L10 Cummins, 44,000 # rears, 19,000 # front axle, 244,000 mi, real good HD truck, \$12,500 w/32' cattle body; \$9,500 without box • (570) 673-8911



95 Ford F350XL 4x4 Powerstroke, Auto, 12' Stakebody dump, Meyer P/A plow, towing package 75,000 mi. \$13,900. Myerstown 717/866-1610 — 610/269-3442

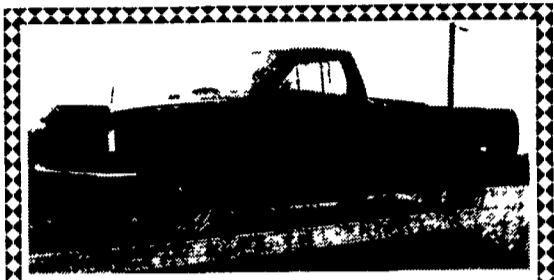


96 Ford F450 Refrigerator truck, 14 ft. bed with Therma King box, Diesel, 5 speed, Cab, AC, #2HD70A **\$15,987** Call New Holland Ford for details: 717-354-4901

P.P.S. Pierce's Trailer Sales
LITITZ, PA (717) 626-3039

By mail 11 East 28th Div Hwy Lititz, PA 17543

Pierce's Trailer Sales
Authorized Dealer for **MONARCH, MORITZ, PA INTL.**
thoroughbred horse trailers, stock trailers, utility, dump, flat-bed, and equipment trailers



1995 Chevy 1500 4x4 Cheyenne,
V6, 5 Sp., PS, P Brakes, No Air, 111,000 Mi., Needs Bed Side, Dark Green **\$4,500 w/Parts** 717-355-0644 (Dealer)

MOVE 'EM OUT

92 INTERNATIONAL 8200 - 6x4;
Cummins N14-350; Fuller RT-14610; A/C; A/R Drivers Seat; 12000# FA; 40,000# RA on 34,000# Spring; Yellow Paint **Low Miles**

2001 ISUZU NPR GAS
With Or Without Body, Call Us With Your Specs.

2002 ISUZU NOR CREW CABS
END OF SEASON PRICE
175 HP Diesel, Auto Trans., 7-Person Seating, Chassis In Stock, Ready To Go. Call Keith With Body Specs.

"NEW" Knapheide "L" BACKPACK TOOL BOX
• All Steel - Paint Driftwood Satin Glo Silver Take It Away - Or We Can Mount On Your Chassis

LOTS OF OTHER ISUZUS IN STOCK

WE DELIVER ANYWHERE!!!

FIVE STAR ISUZU ★★ ★★
New Toll Free - 1-877-54ISUZU Keith Eshelman (544-7898)

LEED

Truck Center

422 S. Chiquoe Rd. • Manheim, PA
(717) 899-1200 • Fax (717) 899-1300

Consignments Welcome CALL: Ray Leed Financing Available
If We Don't Have It - We Can Find It!

<p>1987 Ford F900, 32,800 Cat Diesel, 10 Spd., P/S A/B, Tandem Axle Head, Susp 18 Platform with 14,000 Lb National Boom Crane with Winch New Paint & Insp Only \$8,900</p>	<p>1991 IHC 4900, DT466 Turbo Diesel, 6+1 Spd., P/S, A/B 32,800 GVW, 21' Platform Body, New Insp., Clean Only \$7,900</p>	<p>1978 IHC Loadstar, 1800 V8 392 Gas 5 & 2 Spd., 32,300 GVW, P/S A/B, 10' Dump with 11 Plow & Salt Spreader Central Hyd Insp Clean, Only 43,500 Miles Only \$5,000</p>
<p>1987 IHC S1754, 6.9 Liter Turbo Diesel, 5 & 2 Spd., P/S, Hyd Brakes, Non CDL, 25,000 GVW, 18' C&C, Insp., Clean Recent Jasper Reman Eng Only \$3,900</p>	<p>1986 FORD F350, 11' Knapheide Utility with Auto Crane, Tow Pkg., 351 V8 Gas, 4 Spd, P/S, P/B, Dual Wheel, 11,000 GVW, Insp Clean Only \$4,500</p>	<p>1987 FORD F350, 351 V8 5 Spd., P/S, P/B, 9' Platform Body, Dual Wheel, 10,000 GVW New Insp Only \$2,200</p>
<p>1989 FORD F-350 Custom, 351 V8, Gas, A/T, P/S, P/B, 9' Baker Utility Body Gas Power Gen Set & Baker Versalift Bucket, Dual Wheel, 11,000 GVW New Paint Very Clean Only \$8,900</p>	<p>91 GMC Topkick, 3116 Cat, 215 HP, 6 Spd., P/S, A/B, A/C, 32,000 GVW, 26' Removeable Van Body Will Separate, Year End Special</p>	<p>1989 FORD E-350 Custom, 351 V8, Gas, A/T, P/S, P/B, 9' Baker Utility Body, Gas Power Gen Set & Baker Versalift Bucket, Dual Wheel, 11,000 GVW New Paint Very Clean Only \$8,900</p>

THE HONDRU EXPERIENCE

OVER 200 TRUCKS AVAILABLE FROM OUR 4 DEALERSHIPS

E-TOWN CHEVROLET

Oldsmobile Pontiac
Route 230 E-Town • 717-361-7776
877-924-6644

2000 CHEV. K3500 DUMP TRUCK

V8, Auto, AC, PS, PB **\$AVE**

BRAND NEW 2000 LEFTOVER

2001 DODGE RAM 3500 4X2

ST, Auto, V-8, Dually

PHILLIPS FORD

Route 72 Manheim • 717-665-3551
877-597-3551

99 Ford F350 Cab & Chassis
Diesel, 5-Spd., A/C

Blow Out Price **\$13,495**

01 Ford F350 Super Cab, Dually 4x4 \$24,995 #2F246A
01 Ford F150 Super Crew, 4x4 #2F262A
00 Ford F150 Super Cab, 4x4 #2F135A
99 Ford F150 Super Cab, 4x4 #2F179A
99 Ford Ranger, XLT Super Cab, 6 Cyl., 5 Speed, AC #IF719A
99 Ford Exp Eddie Bauer \$19,995 #IF945A
96 GMC 15 Pass Van, Only 50,000 Miles #2F075A

E-TOWN DODGE

Route 230 E-Town • 717-367-6644
877-924-6644

01 DODGE DAKOTA

Quad Cab, 4x4, V6, Auto, AC, PW & L, PB, PS

00 Chevy K1500 Ext Cab 4x4, V-8, Auto, AC, PW & L, T&C
99 GMC Cargo Van 3500, Auto, AC, PS, PB
99 Dodge Dakota Club Cab 4x4, Auto, AC, PW & PL, T&C
99 Chevy Suburban 4x4, Leather, Lt Pkg, CD
99 Dodge Ram Cargo Van 2550, Auto, AC, PW&L
98 GMC Sierra 1500 Ext Cab 4x4, Auto, AC, PW & L, T&C, PS & PB
97 Dodge Club Cab, 4x4, Auto, AC, PS, PB, PW&L, T&C
97 GMC 3500 Extra Cab, 4x4, Auto, AC, PW&L, CD

All prices Include Rebates, Exclude Tax, Tag and \$55 Dock Fee

MANHEIM CHRYSLER GMC

Route 72 Manheim • 717-665-2473
877-603-2473

02 GMC SAVANNA SLT
7 Pass., V-8, Auto, AC, PW & L, T & C, Leather Interior, VCR w/2 Screen, Rear Audio Systems

TWO IN STOCK

99 Kia Sportage, Auto, AC
98 GMC Ext Cab, 4x4, SLE
96 Ford Aerostar XLT, 2WD
95 Chevy Blazer, 4x4, LT
95 Chevy Tracker, Auto, Soft Top

LOADS OF USED PICKUPS
CALL ANY STORE FOR DETAILS
Visit us @ www.hondruauto.com

OVER 10 CHASSIS IMMEDIATELY AVAILABLE FOR BODY INSTALLATION AT OUR LOCAL BODY COMPANIES!

FARM DUMP TRAILERS

(Direct from the Manufacturer)

6-Ton Dump Trailer

- 10 ft x 7 ft
- Floating Tandem Axle
- 3 ft Front, 3 ft Tailgate & Grain Chute
- 16 in Extendable Sides
- 10 ga Floor & Sides
- 11Lx15 Flotation Tires
- 2-Way 4 in x 24 in Hydraulic Cylinder includes hoses

\$3,200 U.S./delivered

7-Ton Road Dump Trailer

- Fifth wheel or bumper type
- 16 ft x 8 ft. deck 3 ft front rack and pockets side & back
- DC hydraulic pump & battery mounted in locking tool box.
- 12 ton drop leg jack
- 10 ga. floor
- 6x3x3/16 tube main frame
- Sealed beam lighting
- 7000 lbs per axle rating
- Electric brakes on both axle
- 16" tires on white spoked rims
- \$6400 U.S delivered in Northeast U.S.A.

BERKELMAN'S WELDING
RR 7, AYLMEYER, ONTARIO, CANADA N5H 2R6
(519) 765-4230